

## AH34152A opt.01

### Bias-board

#### Features

- Power supply: +9V / -7V
- Built-in power sequence circuit
- Waveform adjustment
  - Output voltage
  - Cross point



#### Application

Supply bias voltage to AH34152A LN driver

#### Absolute Maximum Ratings

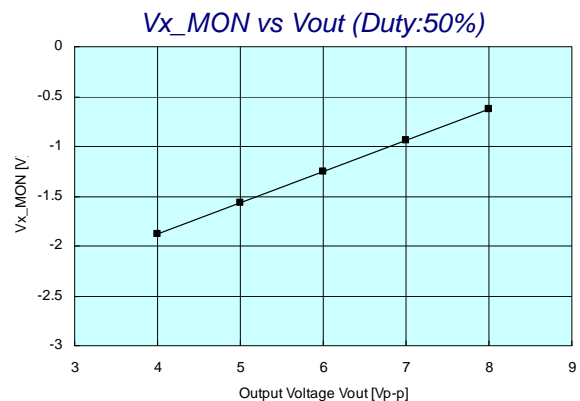
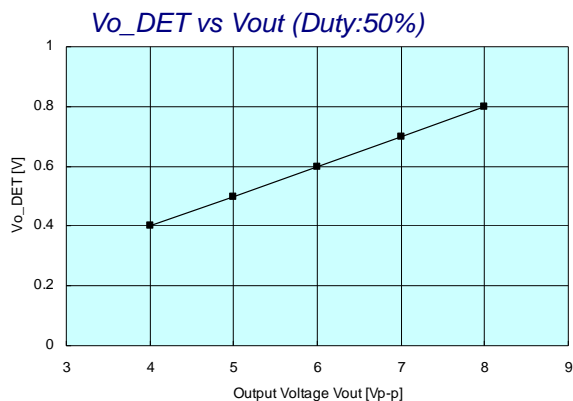
Items	Symbols	Conditions	Units	Ratings	
				min.	max.
Supply voltage	V+	+9V	V	0	+10
	V-	-7V	V	-8	0
Operating temperature	Tc		°C	+5	+50
Storage temperature	Tstg		°C	-20	+85

#### Specifications

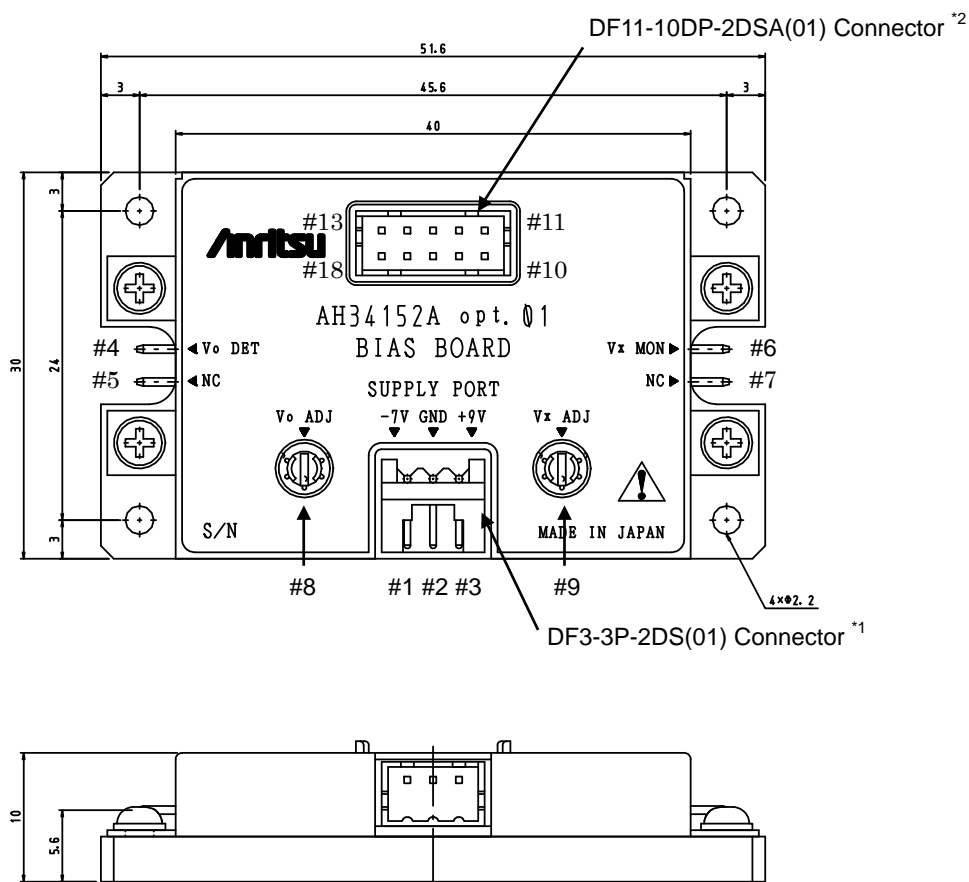
(Vo=8Vp-p / Duty: 50%)

Items	Conditions	Units	Specifications		
			min.	typ.	max.
Current consumption	+9V	mA		300	380
	-7V		-60	-30	
Total power consumption		W		2.9	

#### Reference Characteristics



## Dimensions



Units: mm

#	Symbols	Supply voltages	Functions	Remarks
1	V-	-7V	DC power terminal	*3
2	GND	GND	Ground	
3	V+	+9V	DC power terminal	*3
4	Vo_DET		Output amplitude detector terminal	
5	(NC)			
6	Vx_MON		Cross point monitor terminal	
7	(NC)			
8	Vo_ADJ		Output amplitude adjust trimmer	
9	Vx_ADJ		Cross point adjust trimmer	
10-19			Bias terminals for AH34152A	*2

\*1: Please use DF3-3S-2C cable or DF3-3S-2C connector supplied as standard accessories.

\*2: Please connect AH34152A driver and bias board with the attached DF13-DF11 cable.

\*3: This bias board has a built-in power sequence circuit. Sequence of turning on/off and plus/minus of power can be ignored.

Please consult Anritsu Corporation If the products are used in the high reliability system.  
Specifications are subject to change without notice.

**ANRITSU CORPORATION**

5-1-1 Onna Atsugi-shi, Kanagawa 243-8555 JAPAN

URL: <http://www.anritsu.com>

AH34152A opt.01-E-C-1  
May 2011