

Anritsu



# Package Insert Inspection System

KD8200AWZ

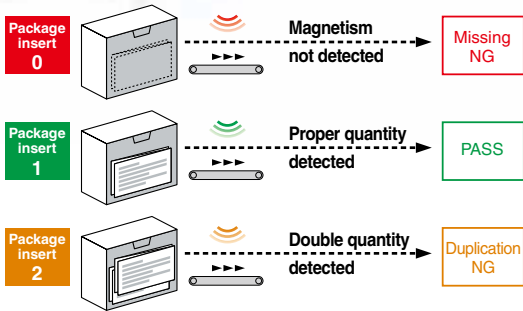


# Reliable Inspection of Magnetic Ink Package Inserts

Previously, magnetic ink inspection detected only the presence of a package insert. Anritsu unique inspection technology and a high sensitivity magnetic sensor enable the system to determine whether the number of the insert is zero, one, or two (and more). With Quicca software installed, data collection and management can be simplified.

## Detects Missing and Duplication Simultaneously

By measuring the quantity of magnetic ink, the system rejects packs with missing or duplicate inserts.



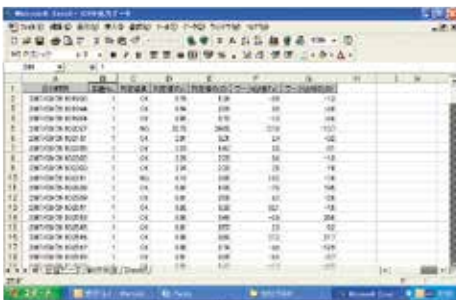
## Stepless Pass Height Adjustment

Pass height can be optimized with the manual adjustment handle according to the product height.

## Data Retrieval and Output with Quicca

Production data are output in CSV format, allowing for the optimal adjustment of the detection threshold and the exact determination of the time when an error occurred.

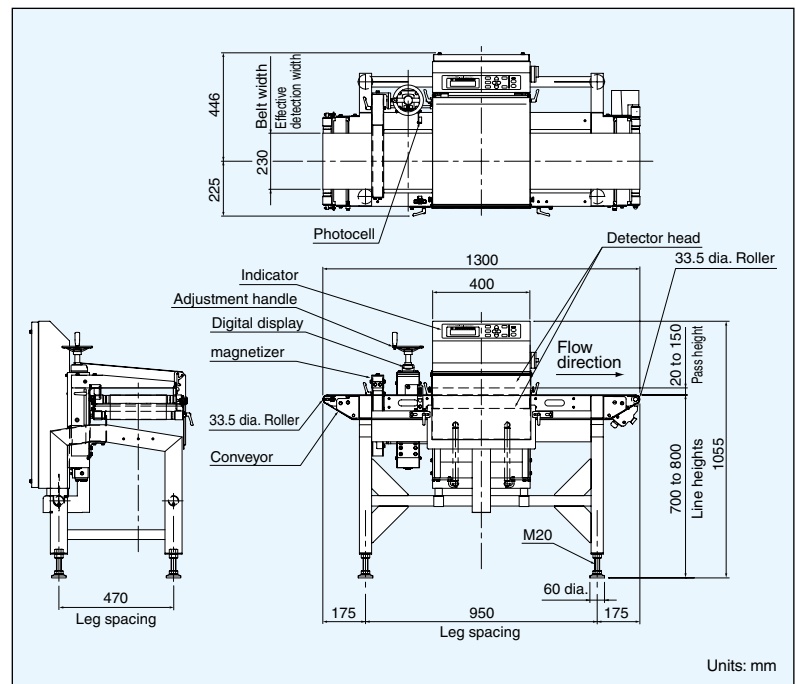
By following on-screen instructions, you can extract desired data via the data output wizard promptly. The data report is printable in CSV format for advanced analysis.



## Specifications

Model	KD8200AWZ
Pass height	20 to 150 mm (stepless adjustment)
Maximum pass width	230 mm
Belt width	230 mm
Display	STN LCD
Operation method	Flat panel key
Preset memory	Maximum 100 +10% -15%
Product packaging	Application: pharmaceutical products Package: individual package (no metallic materials)
Belt speed	10 to 90 m/min (variable speed depending on application)
Maximum product weight	10 to 70 m/min, maximum 4 kg 70 to 90 m/min, maximum 3 kg
Metal detection	Rejection signal output and beep, or belt stop and beep
Power requirements	100 Vac to 120 Vac +10% -15% or 200 Vac to 240 Vac +10% -15%, single phase, 50/60 Hz, 200 VA, rush current 70 A (typ.) (20 ms or less)
Mass	150 kg
Environmental conditions	0°C to 40°C, relative humidity 30% to 85%, non-condensing
Protection class	IP66 (adjustment handle: IP40)
Exterior	Stainless steel (SUS304)

## External Dimensions



As this system uses magnets, persons with a pacemaker or other life sustaining devices must stay away from it. The magnet field may interfere with the operation of such electronic devices.

**Anritsu** envision: ensure

© ANRITSU INFIVIS CO., LTD. 2014

ISO14001 CERTIFICATE No.JQA-EM0210  
ISO 9001 CERTIFICATE No.JQA-0316

## ANRITSU INFIVIS CO., LTD.

### International Sales Department

5-1-1 Onna, Atsugi-shi, Kanagawa-Prf., 243-0032, JAPAN  
<https://www.anritsu.com/infivis>

TEL: +81-46-296-6699

FAX: +81-46-296-6786

Anritsu Industrial Solutions (Shanghai) Co., Ltd.

TEL: +86-21-5046-3066

FAX: +86-21-5046-3068

ANRITSU INFIVIS (THAILAND) CO., LTD.

TEL: +66 38-447180

FAX: +66 38-447182

ANRITSU INFIVIS LTD.

TEL: +44(0)1582-433227

FAX: +44(0)1582-731303

ANRITSU INFIVIS INC.

TEL: +1-847-419-9729

FAX: +1-847-537-8266

Some products shown in this catalog may not be available in your country or region. Contact our sales representatives for details.

To ensure proper operation, read the Operation Manual before using the machine.

In addition to daily inspection, an annual maintenance check should be carried out.

Specifications are subject to change without notice.

No part of this catalog may be reproduced without our permission.