

Overall quality management and control system

QUICCA

KSA9003A



The production line in

New improvements are seen by

QUIC

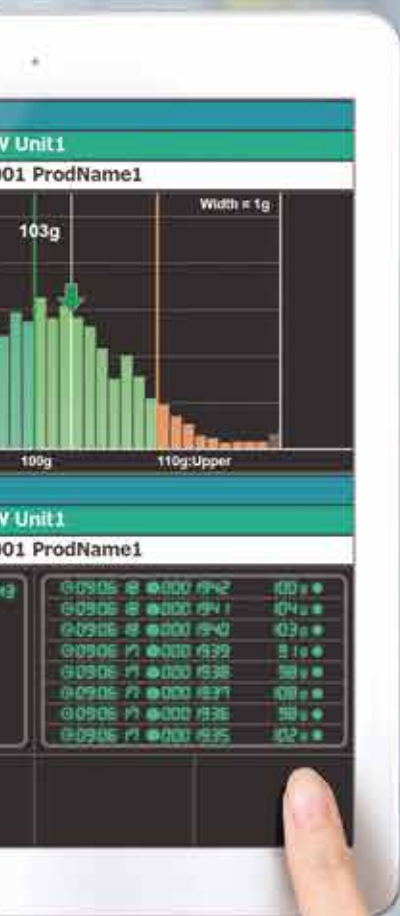


IoT leading to
the production plant
of the future

the palm of your hand.

maximizing use of production data

CA 3





Information sharing through visualization to realize production plant potential



QUICCA 3

Visualization



Production analysis



Information sharing



Accumulating knowledge



Problem resolution



Improved quality
and productivity



Displays the status of production from the past to the present

QUICCA Web

p6

Displays key detailed information required by each processor

QUICCA Monitor

p7

Leads to improved productivity

Production progress monitor

p8

Understands production efficiency

OEE Monitor

p9

Pre-shipment analysis to prevent contaminants from slipping through

X-ray Inspection System Quality Analysis Tool

p10

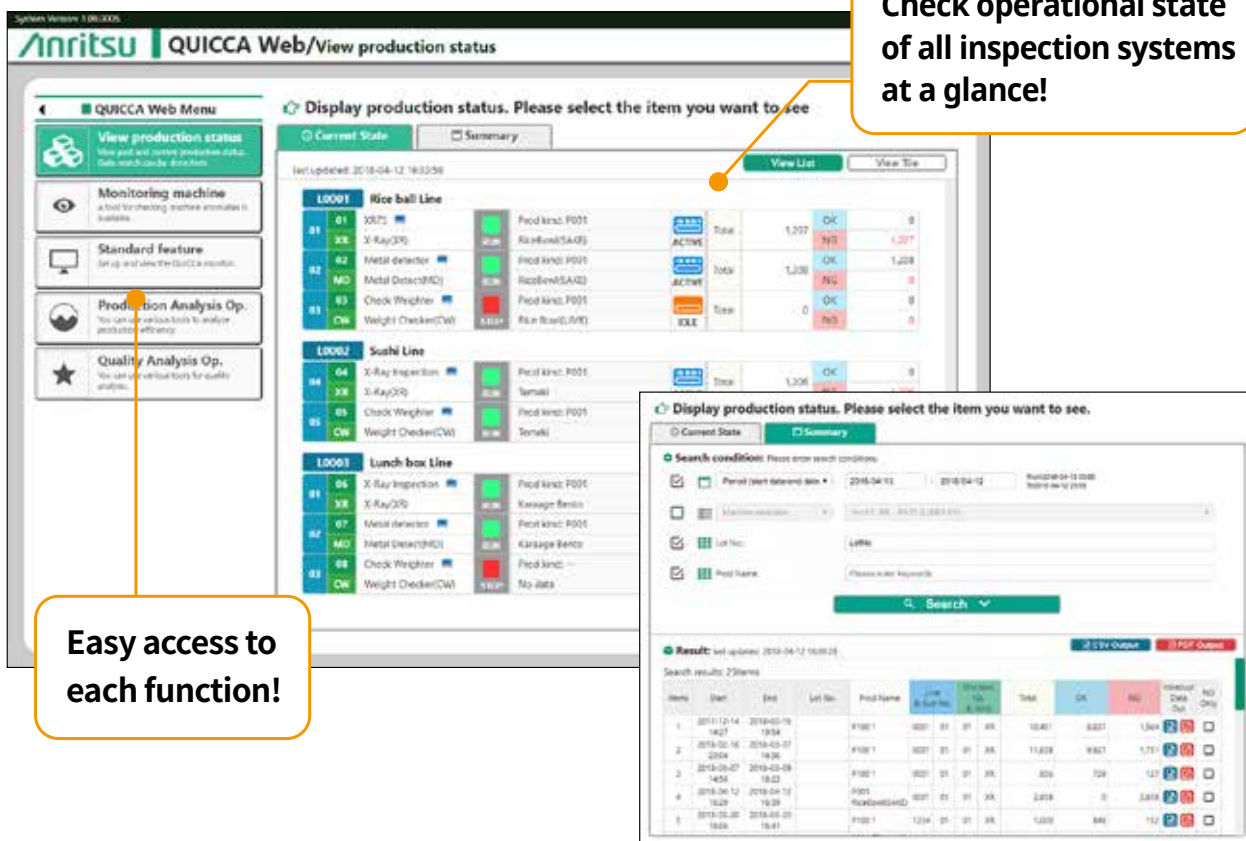
QUICCA Web

Basic screen

Displays the status of production from the past to the present

Summary display of conveyor on/off, product count, OK/NG count, etc.
Production management information can be checked simultaneously at multiple points throughout the plant.

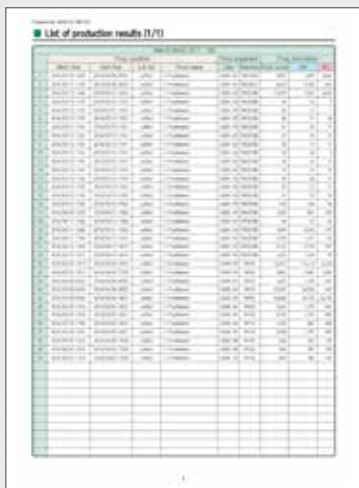
Check operational state of all inspection systems at a glance!



Easy access to each function!

● Specify the date and production line for quick search.

Provides various reports as reliable evidence for auditing and handling consumer complaints.



Production results summary



Inspection system statistical reports



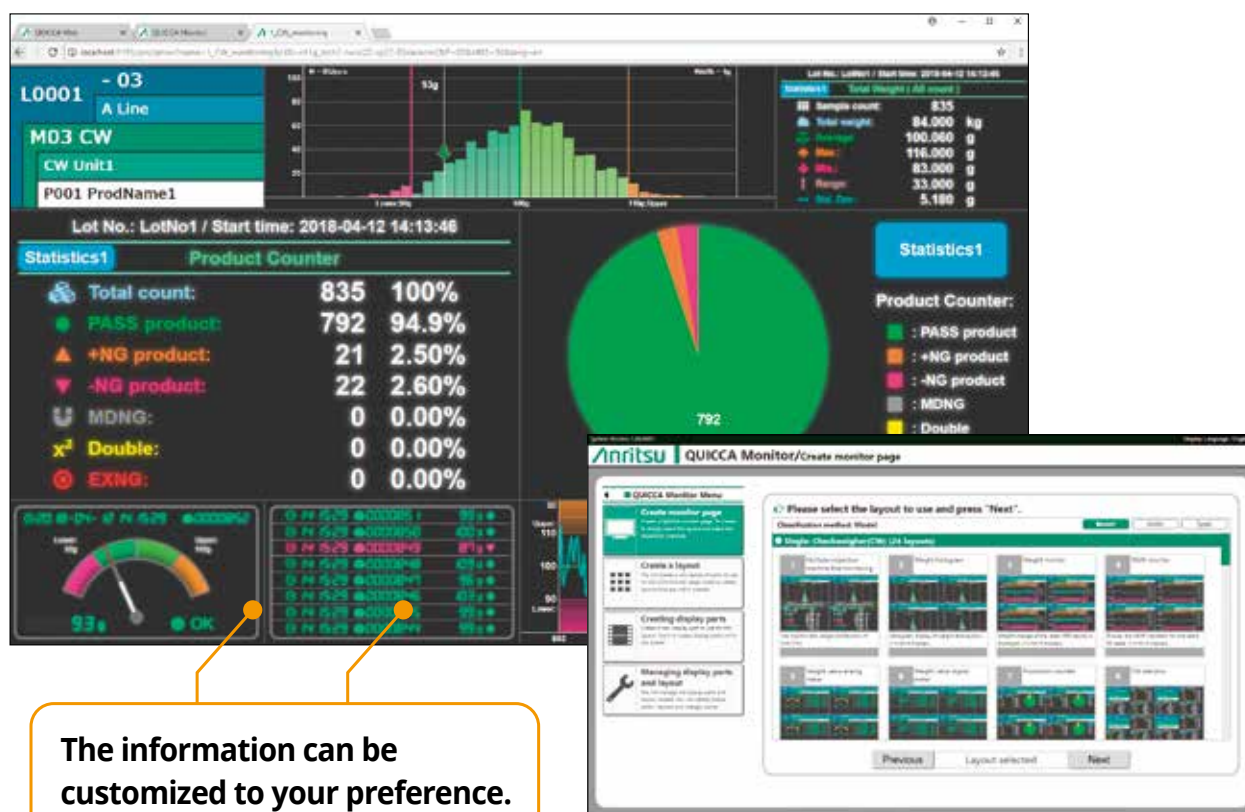
Individual data

QUICCA Monitor

Detail screen

Displaying optimal detailed information for each processor

With QUICCA Monitor, individual users can customize the display with information they require, enabling quick confirmation of status as well as fast and accurate judgments.



The information can be customized to your preference.

● The pre-set display screen layout enables easy setting.

Displays in the workplace, meeting rooms, offices or other locations

Because the plant chief, quality manager and others can check production management information from anywhere in the plant, it enables fast judgments. Also, individual data and statistics data can even be checked from the office, which makes it easier to apply in various measures.

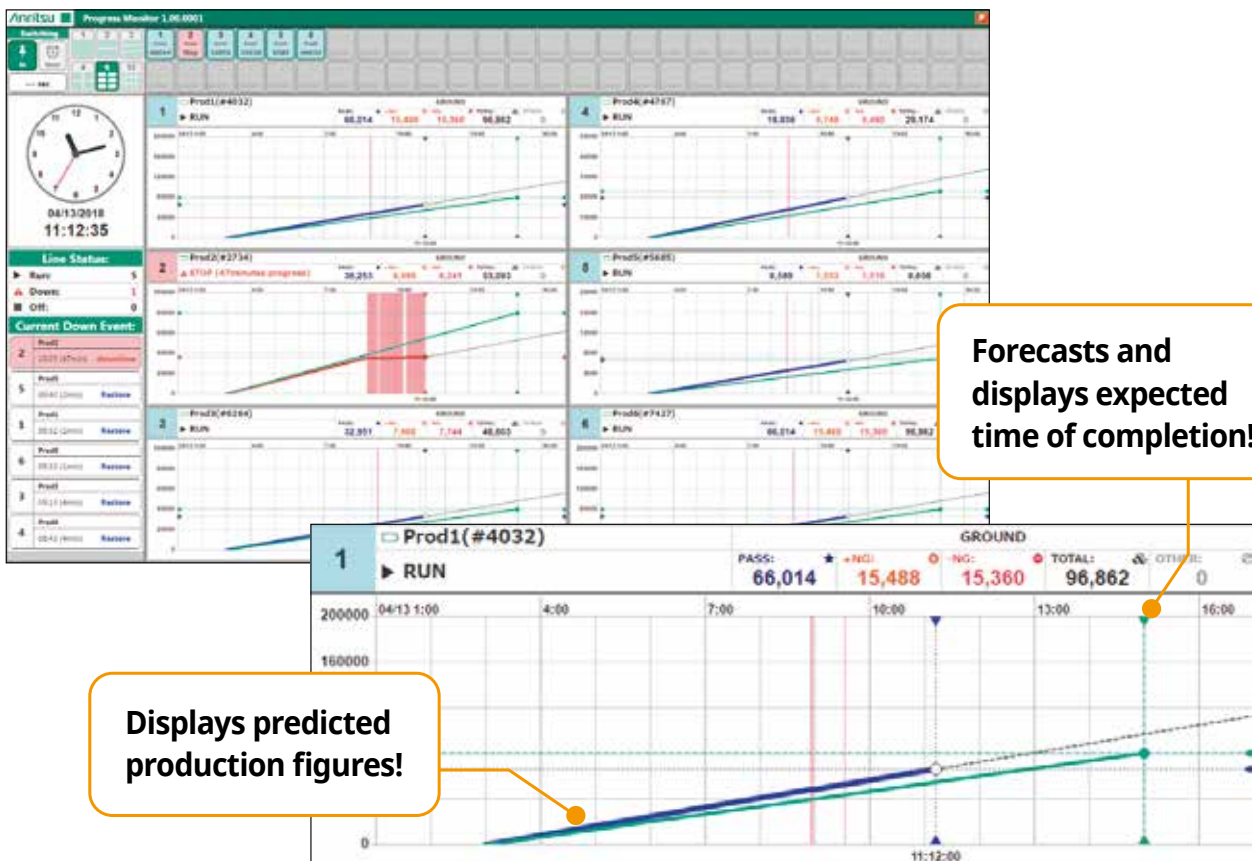
It enables a variety of uses for information, which can be readily shared by displaying on large screens in meeting rooms and offices.



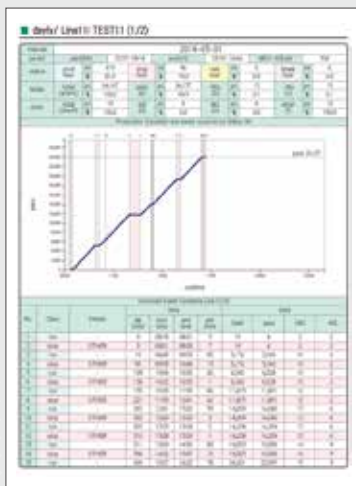
Production progress monitor

Production progress graphs facilitates understanding of momentary stoppages and production delays, enabling fast response.

Easily understood graph display whereby it is possible to check the state of progress at a glance. Predicted production figures and expected time of completion are also displayed.



Produces reports easily and quickly, enabling effective measures. Report forms are produced to leave a record.



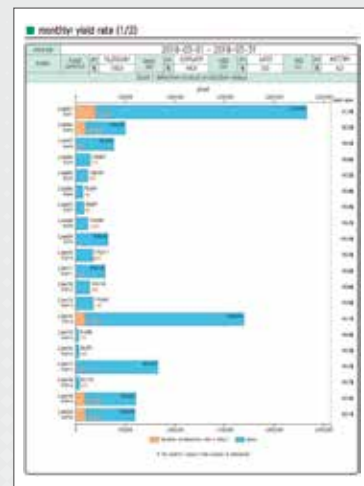
Daily report (production status)

Possible to check production trends and occurrence of momentary stoppages through graphs and charts



Weekly report (operating ratio)

Possible to check daily operating ratio changes. Able to discern a fall in operating ratio on a certain day of the week.



Monthly report (yield rate)

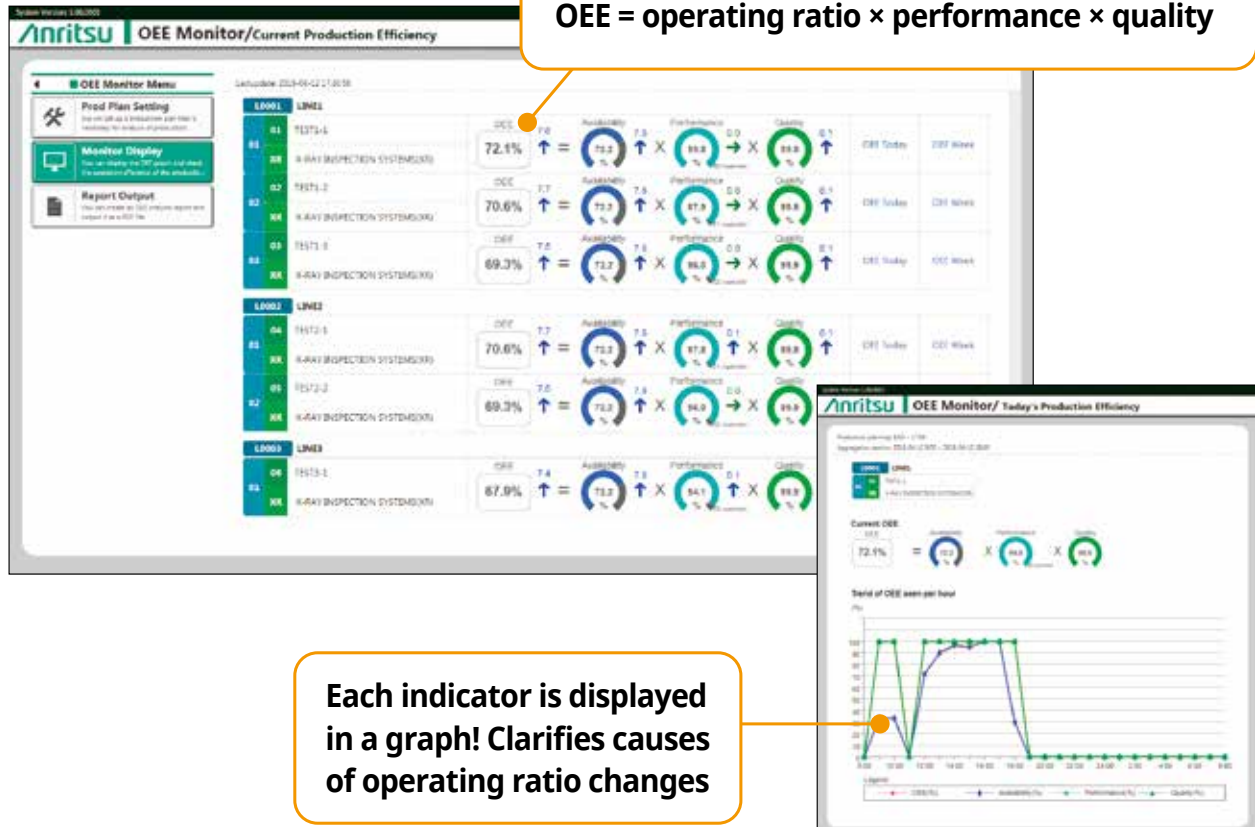
Possible to check monthly yield rate by product type. Enables priority measures for product types with a poor yield rate

OEE Monitor

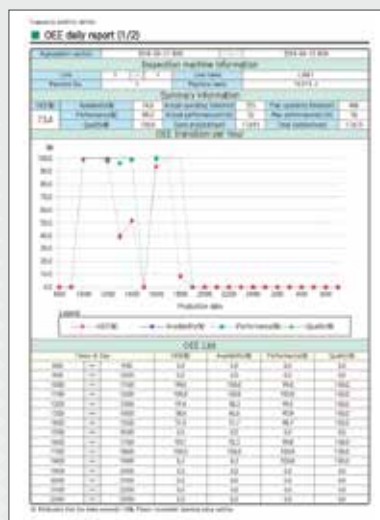
Displays operating ratio, performance and quality indicators as well as the overall equipment effectiveness (OEE).

By quantifying production efficiency it becomes possible to make objective judgments, even with limited experience. It is thereby possible to focus measures on production lines where performance has fallen.

Displays quantified production performance!
OEE = operating ratio × performance × quality



Able to output in the form of daily or weekly reports.



OEE daily report



OEE weekly report

**X-ray Inspection System
Quality Analysis Tool**

Quality check can be performed with the simple procedure before shipment, preventing contaminants from slipping into the finished product.

Various functions to reduce the outflow of contaminants

- The image of defective product is automatically extracted for final check prior to shipment.
- Detects and notifies the risk of contaminant outflow through the setting of various conditions such as detection limit
- Displays transmitted image before and after the defective products, allowing for a visual check for small contaminants within the limits

Automatic extraction and enlarged display of the NG image.

The information can be searched by the effect value and the NG type.

Specify the date and production line for the NG image.

**Lookout
functions**

Ensures that the PC used by QUICCA for inspection systems and quality recording is functioning normally



Reduces risk of production line stoppage

- Monitors errors and alarms of all inspection systems and gives a warning if any of these conditions continues for a certain period.
- Monitors operations which would lead to breakdown of inspection system and gives a warning.



Reduces outflow of defective goods

- Gives a warning when changes are made to limit values during production.
- Gives a warning if a major NG occurs which would lead to inspection system abnormality.

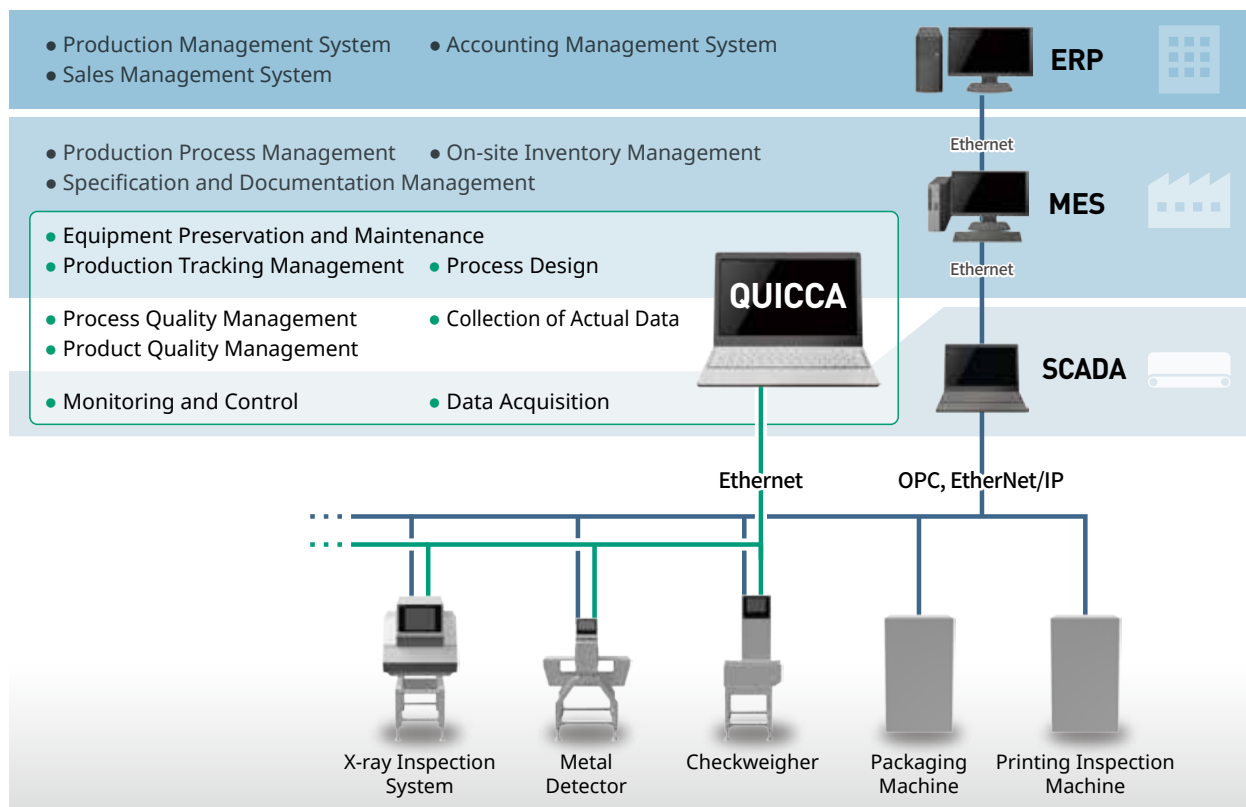


Reduces wastage of materials

- Monitors the incidence of NG and counts of continuous NG and gives a warning in relation to a pre-set threshold if that threshold is approached.
- Detects reduction in production performance based on OEE analysis and gives a warning.

Construction of plant network

QUICCA is a system providing diverse functions using inspection system connected to a network for visualization of production status, production and quality analysis. Installation is simple and inexpensive. QUICCA uses each piece of inspection system to gather information specific to the company in real time, thereby enabling detailed quality analysis which is difficult to manage with enterprise resource planning (ERP) and manufacturing execution systems (MES). Even if ERP and MES are already in place, the introduction of QUICCA can achieve a higher degree of quality assurance.



System requirements

Item	Notes	Form supplied
PC (PC, server)	PC for QUICCA installation	Please arrange for purchase and installation.
LAN cable	Category 5e or higher. Gigabyte and Ethernet compatible products recommended.	
LAN switch (switching hub)	Required when connecting multiple equipment. Gigabyte and Ethernet compatible products recommended.	
Cable installation and wiring work	Required for connecting PC, LAN switch, etc.	
HDD for back-up (NAS, USB-HDD)	Required when performing data back-up.	
External HDD for expansion* (NAS, USB-HDD)	Required when PC HDD capacity is insufficient. USB3.0 connection compatible products recommended.	
KSA9003A QUICCA	Includes QUICCA license. Separate connection licenses are required according to the number of machines connected.	Sold by Anritsu
Ethernet unit	Required depending on equipment to be connected.	
Equipment	X-ray inspection system, metal detector, Checkweigher, automatic combination weigher	

*HDD (hard disk) is a consumable product. Subscription to manufacturer long-term warranty and on-site maintenance is recommended.

Specifications

■ QUICCA

Maximum number of connectable machines *	99
Maximum recording capacity*	3000 products/min (all lines) 1,500 items/min (when only X-ray inspection system is connected for recording of transmitted images) When only X-ray inspection system is connected for recording of transmitted images, storage capacity for the X-ray machine is calculated as double.
Maximum number of recordable data	Depends on free disk space on PC. Maximum 4 million data/day 1 million to 4 million data/1 GB (Individual data, Statistics data, History data) 10,000 to 30,000 data/1 GB (image data) Data can be saved on multiple hard drives such as NAS

* The maximum number of connectable machines and video cameras, and maximum recording capacity vary depending on specifications of PC and network configuration.

■ Computer operating environment

Server

OS	Windows 7/SP1 (Professional/Ultimate/Enterprise) (64bit) Windows Server 2012/R2 (Standard/Datacenter/Essentials/Foundation) Windows 10 (Pro/Enterprise) Windows Server 2016 (Standard/Datacenter/Essentials)
CPU	Intel Core i3 Processor 2.80 GHz or higher
Memory	8 GB or higher
HDD	1 GB or more free disk space for installation in addition to that required for data saving
Display	1024 × 768 or higher
LAN	Ethernet (100BASE-TX, 1000BASE-T)
Required browser	Google Chrome, Microsoft Internet Explorer

Higher performance is required for optimal use.

Client

OS	Windows 7/SP1 (Professional/Ultimate/Enterprise) (32bit/64bit) Windows 10 (Pro/Enterprise)
CPU	Intel Core i3 Processor 2.80 GHz or higher
Memory	4 GB or higher
HDD	Depends on functions used. 100 MB or more available capacity for installation
Display	1024 × 768 or higher
LAN	Ethernet (100BASE-TX, 1000BASE-T) or wireless LAN connection
Required browser	Google Chrome

Intel, and Intel Core are trademarks of Intel Corporation in the U.S. and/or other countries.

Microsoft, Windows, and Windows Server are registered trademarks or trademarks of Microsoft Corporation in the United States and/or other countries.
Other company names, product names, and service names are the trademarks or registered trademarks of their respective companies.



ANRITSU INFIVIS CO., LTD.

International Sales Department

5-1-1 Onna, Atsugi-shi, Kanagawa-Prf., 243-0032, JAPAN
TEL: +81-46-296-6699 FAX: +81-46-296-6786
<https://www.anritsu.com/infivis>

Anritsu Industrial Solutions (Shanghai) Co., Ltd.

3F, No.55, Lane 1505, Zuchongzhi Road, Zhangjiang Hi-tech Park, Pudong New Area, Shanghai 201203, P.R.China
TEL: +86-21-5046-3066 FAX: +86-21-5046-3068

ANRITSU INFIVIS (THAILAND) CO., LTD.

700/678 Moo 1, Amata Nakorn Industrial Estate, T. Pangthong A. Pangthong Chonburi Province Thailand 20160
TEL: +66 38-447180 FAX: +66 38-447182

ANRITSU INFIVIS LTD.

200 Capability Green Luton LU1 3LU, United Kingdom
TEL: +44(0)1582-433227 FAX: +44(0)1582-731303

ANRITSU INFIVIS INC.

1001 Cambridge Drive, Elk Grove Village, IL 60007-2453, U.S.A.
TEL: +1-847-419-9729 FAX: +1-847-537-8266

© ANRITSU INFIVIS CO., LTD. 2018

ISO14001 CERTIFICATE No.JQA-EM0210
ISO 9001 CERTIFICATE No.JQA-0316

- Some products shown in this catalog may not be available in your country or region. Contact our sales representatives for details.
- To ensure proper operation, read the Operation Manual before using the machine.
- In addition to daily inspection, a full maintenance inspection should be completed annually.

Specifications are subject to change without notice.

No part of this catalog may be reproduced without our permission.

Printed on Recycled Paper