



Anritsu Industrial Solutions USA Inc.

1341 Barclay Blvd | Buffalo Grove | IL | 60089

PHONE: 847-419-9729

FAX: 847-537-8266

WEB: www.detectionperfection.com

COURSE GROUND PORK MEAT

Pipeline X-Ray Application Report

New!



Highlights

- Fat/Lean Analysis
- Detection of 0.5 mm Stainless Steel
- 1-2 mm Pork/Beef Bone Detection
- 2-4 mm Poultry Bone Detection

DISCOVER WHAT YOU'VE BEEN MISSING!



1341 Barclay Blvd., Buffalo Grove, IL 60089
PHONE: 847-419-9729
FAX: 847-537-8266
WEB: www.detectionperfection.com

Anritsu X-Ray Application Report

Model

X-Ray Model:	KD7483AW
Reject Model:	Lee Ball Valve Reject System
Connection Type:	3" Tri-Clamp
Pipe Size:	3"
Pump Model:	Handtmann, Risco or Vemag Stuffer Pumps

Production Line Details

Product:	Course Ground Pork Meat
Dimensions:	3" pipeline presentation
Production Rate:	15,000 lbs/hr in this application
Belt Speed:	N/A
Orientation:	Continuous Flow – Void Free in the Pipe
Packaging:	None

Detection Accuracy Online

Ferrous Detection:	0.4 0.5mm sphere
Non-Ferrous Detection:	0.4 0.5mm sphere
Stainless Detection:	0.4 0.5mm sphere
Aluminum Detection:	1.5mm sphere
Stainless Wire Detection:	0.3mm 0.4 dia x 2mm long
Glass Detection 2.39g/cm ³ :	2.0mm glass sphere (smaller possible)
Ceramic Detection 3.9g/cm ³ :	2.0mm ceramic (smaller possible)
Pork Bone Detection:	~ 100% at 1mm to 4mm – calcification dependent
Fat to Lean Analysis:	Estimated at 2% to 3% - Validation ongoing as of 11/10/09

Application Notes

Pipeline inspection provides excellent uniform presentation to control density presentation and maximize detection of low density contaminants. Special algorithms have been developed to improve bone detection without sacrificing full contaminant detection. Imaging to follow:

DISCOVER WHAT YOU'VE BEEN MISSING ... DETECTION PERFECTION

1341 Barclay Blvd., Buffalo Grove, IL 60089

PHONE: 847-419-9729

FAX: 847-537-8266

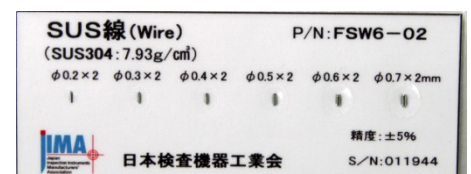
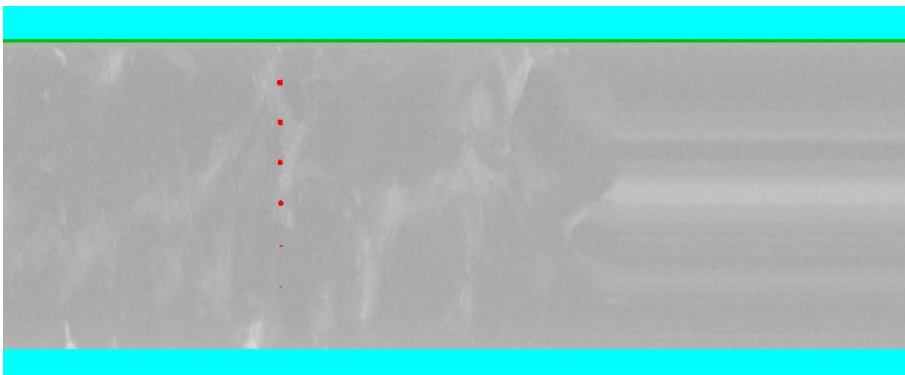
WEB: www.detectionperfection.com

Results and Imaging

PIPELINE INSTALLATIONS



0.3mm x 2mm long (and larger) wire @ 7.93g/cm³ detected (RED)



DISCOVER WHAT YOU'VE BEEN MISSING ... DETECTION PERFECTION

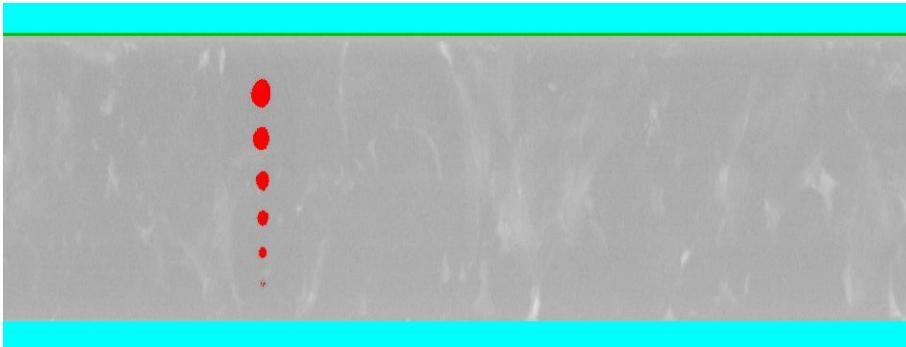
1341 Barclay Blvd., Buffalo Grove, IL 60089

PHONE: 847-419-9729

FAX: 847-537-8266

WEB: www.detectionperfection.com

3.0mm sphere rubber @ 1.3g/cm³ detected (RED)



2.0mm sphere glass @ 2.49g/cm³ detected (RED)

