



## XR75 Series

Anritsu XR75 X-ray inspection system provides reliable and accurate inspection with reduced power consumption. New features by XR75 technology reduce the lifetime operating cost, making X-ray inspection more affordable to purchase, own and operate.

### Introducing Anritsu's Advanced Long Life Technology



<sup>\*1</sup>) Comparison with conventional models with air-conditioner.  
<sup>\*2</sup>) It is the estimated value by Anritsu and may vary depending on the condition of machines.

**Anritsu** envision : ensure

**ANRITSU INFIVIS INC.** <http://www.detectionperfection.com>

1001 Cambridge Drive Elk Grove Village, IL 60007-2453  
Phone (847) 419-XRAY (9729) Fax (847) 537-8266

• Some products shown in this catalog may not be available in your country or region.  
Contact our sales representatives for details.  
• To ensure proper operation, read the Operation Manual before using the machine.  
• In addition to daily inspection, a full maintenance inspection should be completed annually.

© ANRITSU INFIVIS CO., LTD. 2017  
ISO14001 CERTIFICATE No.JQA-EM0210  
ISO 9001 CERTIFICATE No.JQA-0316

Specifications are subject to change without notice.  
No part of this catalog may be reproduced without  
our permission.

**Anritsu**

X-ray Inspection System  
Introduction of Inspection Solution

## Inspection by Area

# Missing Inspection of Dishes in Lunch Boxes



Reduce consumer  
complaints  
and protect  
brand reputation

X-ray Inspection System — Introduction of Inspection Solution

As consumer demand for food safety and quality grows, food manufacturers are under increasing pressure to ensure the safety and quality of their products. X-ray inspection systems can help minimize the risk of recalls and safeguard your brand reputation. We are introducing the reliable inspection solution for a lunch box product using our latest x-ray inspection system.

Missing Inspection of Dishes in Lunch Boxes

The XR75 X-ray inspection system performs missing product inspection by area to detect missing dishes in a lunch box. Multiple inspection areas can be set in one product. The product is evaluated as a defective product if any of inspection areas in a lunch box exceeds the reference range.



Dishes are properly placed in all areas.



Chocolate chip cookies in the top center are missing.



Have you ever received complaints from consumers or retailers that one of dishes in a lunch box is missing?

Visual inspection by a person involves the risk of defective products slipping through. It is not possible to perform missing product inspection using a camera after a product is packed in a lunch box. Since a checkweigher is not capable of inspecting the product in which each dish weighs differently, the product with dishes that weigh more or less than the specified amount may be evaluated as a PASS product.\*1 X-ray inspection systems provide the best solution for detecting missing dishes in partitioned lunch boxes.



*1 Example:	Dish 1	Dish 2	Dish 3	Dish 4	Dish 5	Dish 6	Total weight
PASS product which contains six different dishes that weigh 10 grams each.	10	10	10	10	10	10	60g
One of dishes weighs half of a fixed quantity and the remaining dishes weigh more than the specified amount.	11	11	11	5	11	11	60g
	Checkweigher evaluates a product as a PASS product by its total weight.						

Details are displayed on the screen

Multiple inspection areas can be set for each partition dish to detect the presence and overs & shorts of each dish.



[Example] Evaluation items and Inspection Functions

Area 1
Overs and Shorts of Cheese ⇒ Evaluate by virtual weight detection
Area 2
Overs and Shorts of Cookies ⇒ Evaluate by virtual weight detection
Area 3
Presence of a Packed Juice ⇒ Evaluate by missing product detection
Area 4
Overs and Shorts of Ham ⇒ Evaluate by virtual weight detection

Evaluation is performed by the virtual weight detection, missing product detection, and shape detection. These detection method can be used either alone or in combination with each other.

Up to four areas can be set as the inspection area. Different inspection condition can be specified for each area. Note: Inspection area can be added (option with fee);however, functionality may be restricted.

Example of Inspection

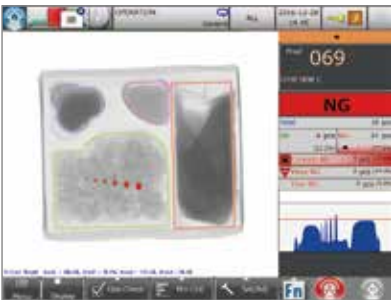
X-ray inspection system offers simultaneous inspection of missing product and contaminant detection.



PASS product



Insufficient amount of chips



Insufficient amount of chili sauce and contaminants



PASS product



The positions of ham and cheese are reversed.



Insufficient amount of crackers