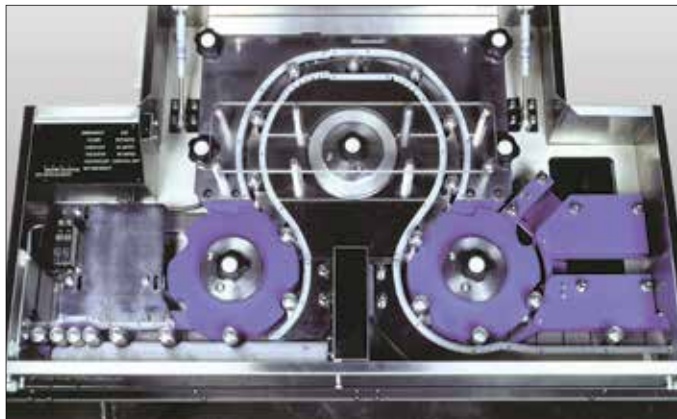


Anritsu

■ Aerosol Can

Checkweigher

KW9627AP00



Assuring Aerosol Can Quality

Features

Stable Handling for High Accuracy

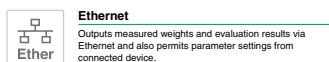
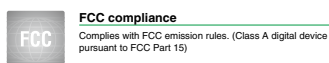
- The stable, star-wheel conveyor system assures high-accuracy rejection of 150 products/min. In addition, maintenance is easy because the star wheel can be adjusted from the top.
- The compact design with the integrated weighcell, rejector, and rejected products chute bin, can be incorporated easily into a production line.

Validation Support Functions

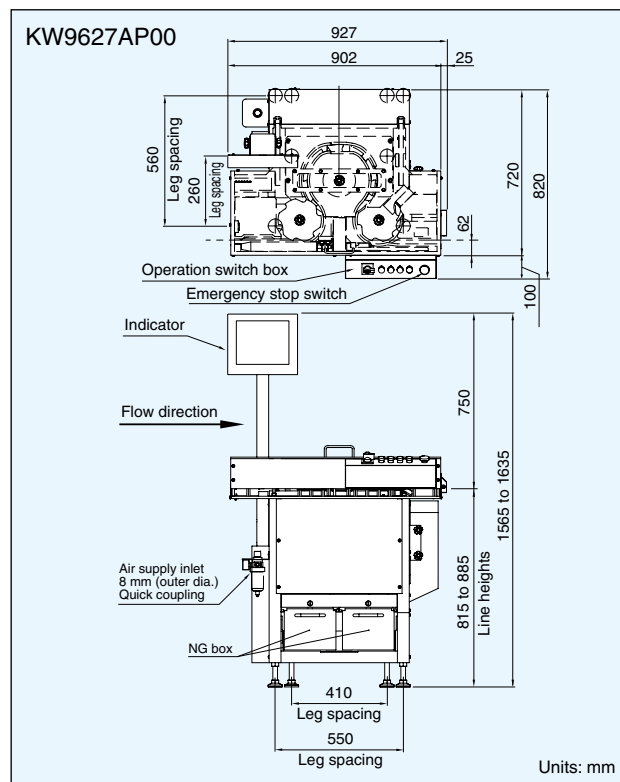
- The GMP validation functions support daily operation checks, full ON-to-OFF records, automatic recording of phenomenon having occurred at devices, etc. FDA 21CFR Part 11 compliant functions, such as prevention of data falsification, simple passwords, and unlawful computer access are equipped as well.

Simple Interface and Reliable Operation Checks

- Easy main operations such as start/stop, as well as various displays including detailed settings, histograms, and X-bar with a Windows OS-based touch panel provide simple operations and screens.
- The operation check function monitors rejection to prevent NG products from being accidentally conveyed to downstream equipment. The independent check function ensures reliable rejection by monitoring operation sensors.



External Dimensions



Specifications

Model	KW9627AP00	
Weighing range	0.5 g to 60 g	
Maximum accuracy (3σ) ^{Note 1}	±0.01 g	
Maximum speed	150 products/min	
Display	10.4-inch color TFT LCD	
Operation method	Touch panel	
Indication range	60.450 g	
Scale interval	0.002 g	
Preset memory	Maximum 100	
Classification	3	
Product size	Can size	21.5 mm dia./ 22.0 mm dia./ 23.5 mm dia./ 25.0 mm dia. ^{Note 3}
	Height	40 mm to 80 mm
Belt speed	14 m/min	
Power requirements ^{Note 2}	100 Vac to 115 Vac +10% -15%, single phase, 50/60 Hz, 400 VA	
Air requirements	0.4 MPa, 20 ℓ /min [A.N.R.] (Use dry air.)	
Mass	150 kg	
Environmental conditions	0°C to 40°C (variation not to exceed 5°C/h to maintain accuracy), relative humidity 30% to 85%, non-condensing	
Protection class	IP30 compliance	
Exterior	Stainless steel (SUS304) (excluding some parts)	

Note 1 : The accuracy varies according to the products to be weighed.

Note 2 : 200 Vac to 240 Vac (Optional).

Note 3 : Fixed by size, and cannot be shared. Contact our sales representatives for other sizes.



ANRITSU CORPORATION

5-1-1 Onna, Atsugi-shi, Kanagawa, 243-8555, JAPAN
TEL: +81-46-296-6699 FAX: +81-46-296-6786
<https://www.anritsu.com/infivis>

Anritsu Industrial Solutions (Shanghai) Co., Ltd.
Room 703-704, Sandhill Central, No.505 Zhangjiang Road, Pudong New Area, Shanghai 201210, P.R. China
TEL: +86-21-5046-3066

ANRITSU INFIVIS (THAILAND) CO., LTD.
700/678-679 Moo1, Amata City Chonburi Industrial Estate, Tambol Panthong, Amphur Panthong, Chonburi 20160 Thailand
TEL: +66 38-447180 FAX: +66 38-447182

ANRITSU INFIVIS B.V.
Grubbenvorsterweg 10 5928NX, Venlo, the Netherlands
TEL: +31(0)20-2254220

ANRITSU INFIVIS LTD.
Unit 3, Scott Road, Luton, LU3 3BF, United Kingdom
TEL: +44(0)845 539 9729

ANRITSU INFIVIS INC.
701 Innovation Drive, Elk Grove Village, IL 60007, U.S.A.
TEL: +1-847-419-9729 FAX: +1-847-537-8266

© ANRITSU CORPORATION 2010
ISO14001, ISO9001 Certified

• Some products shown in this catalog may not be available in your country or region. Contact our sales representatives for details.

• To ensure proper operation, read the Operation Manual before using the machine.

• In addition to daily inspection, a full maintenance inspection should be completed annually.

Specifications are subject to change without notice.
No part of this catalog may be reproduced without our permission.