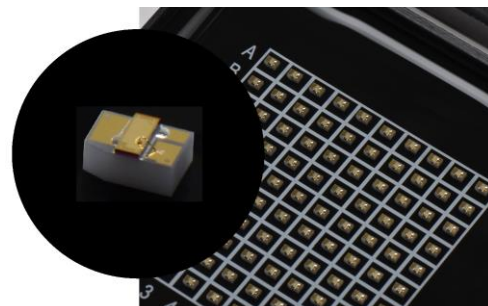


1.5 μ m Gain Chip (chip on sub-mount) **AE5T315BY70P**

AE5T315BY70P is 1.5 μ m InGaAsP / InP Gain Chip for External Cavity Laser developed as a light source for optical fiber communication or optical sensing.

◆ FEATURES

- Broad band: > 100 nm tuning range (CL-band)
- High Optical Output Power: >40 mW with external cavity
- Low spectral ripple
- Normal facet reflectance: HR (95%)



◆ OPTICAL AND ELECTRICAL CHARACTERISTICS (T_{LD}=25°C)

Item	Symbol	Test condition	Min.	Typ.	Max.	Unit
Forward Voltage	V _F	IF =200 mA, pulsed (tw=50 μ s)	-	1.4	2.0	V
ASE Output Power	P _{ASE}	IF =200 mA, pulsed (tw=50 μ s)	5	10	-	mW
Center Wavelength	λ_c	IF =100 mA, pulsed (tw=50 μ s)	1540	-	1600	nm
ASE Ripple	M	IF =100 mA, CW at λ_c =1570 nm	-	-	3.5	dB
Beam Exit Angle	$\Delta\theta_R$	IF =200 mA CW	19	20	21	deg.
Beam Divergence Angle Transverse (perpendicular), Normal Facet	θ_t^{NOR}	IF =200 mA CW, FAHM	15	20	25	deg.
Beam Divergence Angle Lateral (parallel), Normal Facet	θ_p^{NOR}	IF =200 mA CW, FAHM	17	20	23	deg.
Beam Divergence Angle Transverse (perpendicular), Angled Facet	θ_t^{ANG}	IF =200 mA CW, FAHM	26	29	32	deg.
Beam Divergence Angle Lateral (parallel), Angled Facet	θ_p^{ANG}	IF =200 mA CW, FAHM	15	18	21	deg.

*We recommend using Gain Chip in an airtight seal for long-term reliability.

◆ **ABSOLUTE MAXIMUM RATINGS** ($T_{LD}=25^{\circ}C$)

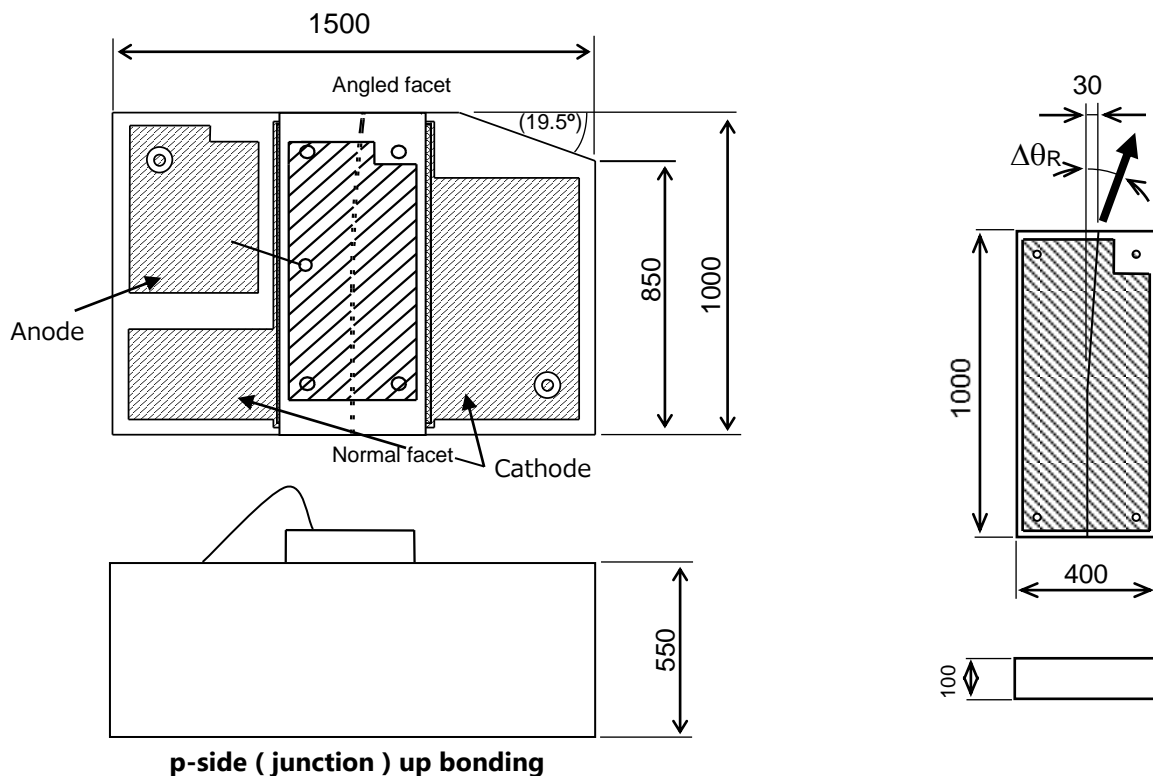
Item	Symbol	Rating	Unit
LD Forward Current	I_F	500	mA
LD Reverse Voltage	V_R	2	V
Operating Case Temperature*	T_C	+15~+45	$^{\circ}C$
Storage Temperature	T_{stg}	-40~+85	$^{\circ}C$
Process/Soldering Temp. vs Time			
Maximum duration 20s	-	300	$^{\circ}C$
Maximum duration 2hour		200	$^{\circ}C$
Maximum duration 100hour		120	$^{\circ}C$
ESD(Human Body Model)	ESD	500	V

*No condensation

◆ **TECHNICAL SPECIFICATIONS**

Item	Symbol	Test condition	Min.	Typ.	Max.	Unit
Angled facet Reflectance	R^{ANG}	CL-band	-	5×10^{-5}	10^{-4}	-
Normal facet Reflectance	R^{NOR}	CL-band	90	95	-	%
Chip Length			0.98	1.00	1.02	mm
Chip Width			0.38	0.40	0.42	mm
Chip Height			0.09	0.10	0.11	mm

◆ **DIMENSIONS** (Unit : μm)





CAUTION : Handle the fiber of the enclosed device(s) with extreme care ; glass fiber is subject to breakage if mishandled and permanent damage to the device may result. Do not pull the device by the fiber or protective sleeve.
Do not coil the fiber into a loop of than 30 mm in radius.

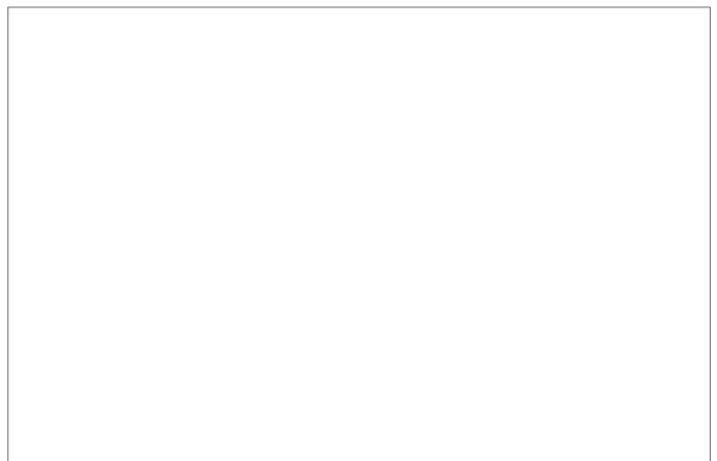
<p>SEMICONDUCTOR LASER</p>	
<p>AVOID EXPOSURE Invisible laser radiation is emitted from this aperture</p>	<p>INVISIBLE LASER RADIATION AVOID EYE OR SKIN EXPOSURE TO DIRECT OR SCATTERED RADIATION</p>
	<p>OUTPUT POWER 500mW WAVELENGTH 0.80 to 1.80 μm CLASS IIIB LASER PRODUCT</p>
<p>Caution - use of controls or adjustments or performance of procedures other than those specified herein may result in hazardous radiation exposure. This Product Complies with 21 CFR 1040.10 and 1040.11 Manufactured Anritsu Corp. 5-1-1 Onna, Atsugi-shi, Kanagawa, Japan</p>	

**ANRITSU CORPORATION
SENSING & DEVICES COMPANY
OVERSEAS SALES DEPT**

Tel +81 46 296 6783 fax +81 46 225 8390
5-1-1 Onna, Atsugi-shi, Kanagawa
243-8555 Japan

URL: <https://www.anritsu.com/sensing-devices>

Please contact following local office for the quotation and order.
Anritsu Corporation reserves the right to change the content of the catalog at any time without notice.



This product and its manuals may require an Export License / Approval by the Government of the product's country of origin for re-export from your country. Before re-exporting the product or manuals, please contact us to confirm whether they are export-controlled items or not. When you dispose of export-controlled items, the products / manuals need to be broken / shredded so as not to be unlawfully used for military purpose.