

# Redefining Transport Testing

## MT1000A Network Master Pro

Today's communication networks are becoming more and more sophisticated as leading network operators install new technologies like OTN, MPLS-TP and Ethernet in their metro and backhaul networks and CPRI/OBSAI in Mobile Fronthaul networks. In some cases, operators must also support Fibre Channel links, while still keeping legacy technologies like SDH/SONET and PDH/DSn operational. The Network Master Pro MT1000A redefines the direction of future test platforms by bringing these network test requirements to a portable device, making it the ideal tool for field testing.

The compact, battery-powered and easy-to-use Anritsu MT1000A with 10G Multirate Module MU100010A has everything in a single, handy tester needed to install and maintain communication networks from 1.5 Mbps to 10 Gbps. This portable, compact, lightweight instrument makes network field testing easy. Service engineers can read and interpret data from the tested network directly on the 9-inch color display with easy-to-understand indications and graphical symbols. And the GUI makes it simple to configure and operate the instrument at its full potential. The MT1000A has been designed for easy expandability, reducing initial costs, and facilitating step-by-step customized investment.



### Key Benefits and Features:

- All-in-one transport tester
  - supports testing from 1.5 Mbps to 10 Gbps
- Easy and intuitive GUI
- Dual port at all rates
- WLAN\*/Bluetooth\*/LAN connectivity
- PDF, CSV and XML report generation for documenting test results
- Remote operation (VNC, Dedicated GUI software)
- Remote control (scripting, via Ethernet, WLAN, GPIB)
- Portable design for maximum portability
- Modular platform ensuring maximum return on investment

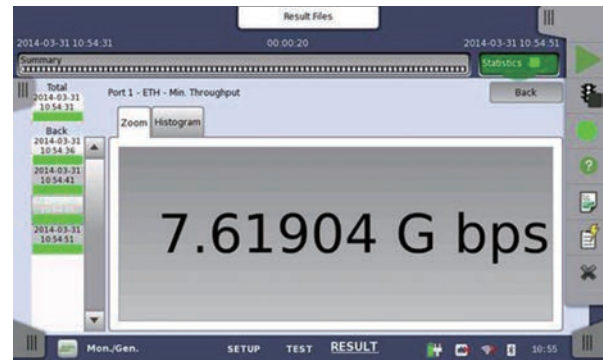
### Key Applications:

- Metro and core networks installation and maintenance
  - OTN up to OTU2 including mapping of Ethernet, CPRI, Fibre Channel, SDH/SONET client signals, multistage mapping and FEC (Forward Error Correction)
  - Testing and verification of new OTN functions: ODU0 and ODUflex
- Carrier Class Ethernet installation and troubleshooting
  - Ethernet testing up to 10 Gbps including RFC 2544, RFC 6349 and Y.1564
  - Ethernet OAM up to 10 Gbps
  - MPLS-TP and PBB/PBB-TE up to 10 Gbps
  - IP Channel Statistics up to 10 Gbps
  - Frame capture for advanced troubleshooting
- Mobile Backhaul installation and verification
  - Synchronous Ethernet testing up to 10 Gbps (ITU-T G.826x and IEEE 1588 v2)
- Mobile Fronthaul installation and verification
  - CPRI testing up to 10 Gbps
  - OBSAI testing up to 6 Gbps
- Powerful Storage Area Networking (SAN) testing
  - Fibre Channel up to 10 Gbps
- Quick and easy testing of SDH/SONET and PDH/DSn networks
  - SDH/SONET (STM-1 to 64/OC-3 to 192)
  - PDH/DSn (E1, E3, E4, DS1, DS3)
- Event log
- Fiber end face inspection using VIP

\*: Available for certified countries and regions including USA, Canada, Japan and all EU countries.



Color indications make it easy to identify problems



Large digit display makes it easy to see counters from a distance

## Product Configurations

Model/Order No.	Name
<b>– Mainframe –</b>	
MT1000A	Network Master Pro
<b>– Module –</b>	
MU100010A	10G Multirate Module
<b>– Options –</b>	
MU100010A-001*1	Up to 2.7G Dual Channel
MU100010A-011	Ethernet 10G Single Channel
MU100010A-012	Ethernet 10G Dual Channel
MU100010A-020	TCP Throughput
MU100010A-051	OTN 10G Single Channel
MU100010A-052	OTN 10G Dual Channel
MU100010A-061	ODU Multiplexing
MU100010A-062	ODU Flex
MU100010A-071	CPRI/OBSAI Up to 5G Dual Channel
MU100010A-072	CPRI/OBSAI 6G to 10G Single Channel
MU100010A-073	CPRI/OBSAI 6G to 10G Dual Channel
MU100010A-081	STM-64 OC-192 Single Channel
MU100010A-082	STM-64 OC-192 Dual Channel
MU100010A-002	FC 1G 2G 4G Dual Channel
MU100010A-091	FC 8G 10G Single Channel
MU100010A-092	FC 8G 10G Dual Channel
MT1000A-003*2	Connectivity for WLAN/Bluetooth

Model/Order No.	Name
<b>– Optional Accessories –</b>	
G0311A	1G 850 nm SX SFP
G0312A	1G 1310 nm LX SFP
G0313A	1G 1550 nm ZX SFP
G0332A	100M FX 1310 nm MM SFP
G0333A	10G SR/SW 850 nm SFP+
G0356A	8G FC/10G SR 850 nm SFP+
G0329A	10G LR 1310 nm SFP+
G0315A	10G LR/LW 1310 nm SFP+
G0316A	10G ER/EW 1550 nm 40 km SFP+
G0318A	10G ZR/ZW 1550 nm 80 km SFP+
G0319A	Up to 2.7G 1310 nm 15 km SFP
G0320A	Up to 2.7G 1310 nm 40 km SFP
G0321A	Up to 2.7G 1550 nm 80 km SFP
G0328A	1G/2G/4G FC 850 nm SFP
G0322A	1G/2G/4G FC 1310 nm SFP
G0323A	1G/2G/4G FC 1550 nm SFP
G0306A	Video Inspection Probe
J1667A	GPIB-USB Converter

\*1: Includes SDH up to STM-16, SONET up to OC-48, PDH (E1, E3, E4), DSn (DS1, DS3), OTN (OTU1) and Ethernet (1 Gbps, 100 Mbps, 10 Mbps).

\*2: Available for certified countries and regions including USA, Canada, Japan and all EU countries. Please contact Anritsu for updated information.

The Bluetooth® mark and logos are owned by Bluetooth SIG, Inc. and are used by Anritsu under license.