

# Higher 100 Gbps Transport Equipment Manufacturing Efficiency

MT1100A  
Network Master Flex



Today's core and metro communications networks are implementing 100 GigE and OTN technologies rapidly to provide sufficient bandwidth supporting the explosive increase in mobile communications data.

Consequently, Manufacturing of 100 Gbps WDM, switches and optical transceiver modules is growing rapidly.

With all the functions needed for testing transport equipment, the 4-port, all-in-one Network Master Flex MT1100A with automatic testing using SCPI commands is the ideal platform for maximizing equipment investment through higher test efficiency and lower cost per port.

The all-in-one MT1100A supports all the latest communications network technologies.

Selecting and installing up to two modules from a range of three module options supports all-in-one R&D, manufacturing, installation and maintenance tests of network and transport equipment operating at bit rates from 1.5 Mbps to 100 Gbps. The large, 12.1-inch color LCD touch panel with easy-to-use GUI plus remote operation of a full range of test functions over an Internet connection greatly improves test efficiency and helps cut costs.



**Key Platform Benefits and Features:**

- All-in-one transport tester
  - Supports testing from 1.5 Mbps to 100 Gbps
  - OTN, Ethernet, CPRI/OBSAI, Fibre Channel, SDH/SONET and PDH/DSn
- OTN testing with Ethernet, CPRI, Fibre Channel, SDH/SONET client signals
- Easy and intuitive GUI
- Up to 4 ports at all rates
- Electrical interfaces of CAUI, XLAUI using optional extenders
- WLAN\*/Bluetooth\*/LAN connectivity
- PDF, CSV and XML report generation for documenting test results
- Remote operation using VNC or dedicated GUI operation software via Ethernet, WLAN
- Remote control (scripting, via Ethernet, WLAN, GPIB)
- Portable design for maximum portability
- Modular platform ensuring maximum return on investment

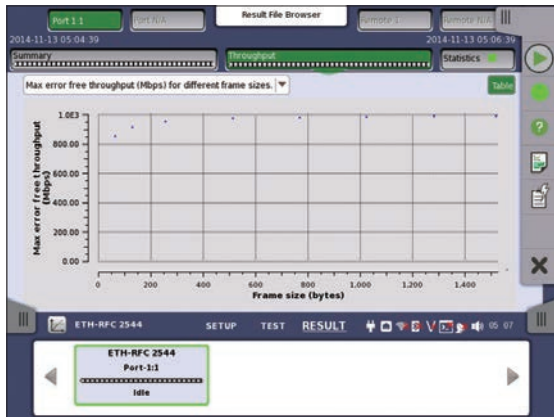
**Key Manufacturing Benefits and Features:**

- Supports OTN, Ethernet, CPRI/OBSAI, Fibre Channel, SDH/SONET and PDH/DSn at bit rates from 1.5 Mbps to 100 Gbps using combination of modules
- RFC 2544-based transmission equipment performance tests
- Color display of threshold settings and Pass/Fail evaluation results
- Automatic repeat testing using SCPI remote commands
- Event log
- Fiber end face inspection using VIP

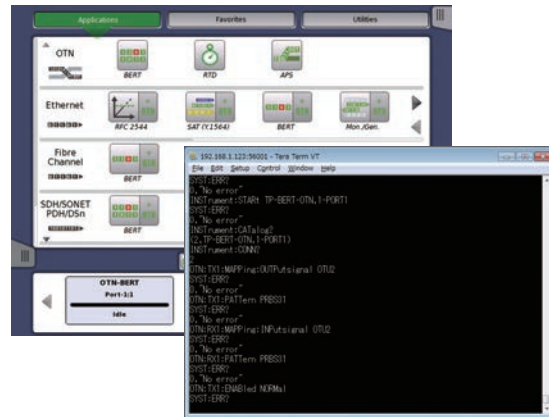


Recommended modules: MU110012A × 2 (for four 40 Gbps/100 Gbps ports)

\*: Available for certified countries and regions including USA, Canada, Japan and all EU countries.



RFC 2544-based transmission equipment performance tests



Automatic repeat testing using SCPI remote commands

**Test Modules:**

- 10G Multirate Module MU110010A  
Up to 2 ports: 1.5 Mbps to 10 Gbps (SFP/SFP+, RJ45, BNC, RJ48, Bantam)



- 100G Multirate Module MU110011A  
Single port: 40 Gbps (CFP) or 100 Gbps (CFP)  
Up to 2 ports: 10 Mbps to 40 Gbps (QSFP+, SFP/SFP+, RJ45)



- 40/100G Module MU110012A  
Up to 2 ports: 40 Gbps to 100 Gbps (CXP, QSFP+)



The Bluetooth® mark and logos are owned by Bluetooth SIG, Inc. and are used by Anritsu under license.