

# R&D for 400 Gbps Networks

## MT1100A Network Master Flex



The rapid explosion in mobile data services, video streaming, and cloud computing is forcing today's core and metro communications networks to meet the need for more bandwidth by increasing deployment of 100 Gbps Ethernet and OTN. But the ever-increasing need for more speed is also driving active R&D into new 400 Gbps technologies. These high-bit-rate networks require particularly high reliability due to the huge transmitted data volumes and diversity of client signals.

The Network Master Flex MT1100A can send and receive a variety of 100G × 4 client signals, offering strong support for R&D of 400 Gbps networks and transport equipment.

The all-in-one MT1100A supports all the latest communications network technologies.

Selecting and installing up to two modules from a range of three module options supports all-in-one R&D, manufacturing, installation and maintenance tests of network and transport equipment operating at bit rates from 1.5 Mbps to 100 Gbps. The large, 12.1-inch color LCD touch panel with easy-to-use GUI plus remote operation of a full range of test functions over an Internet connection greatly improves test efficiency and helps cut costs.



**Key Platform Benefits and Features:**

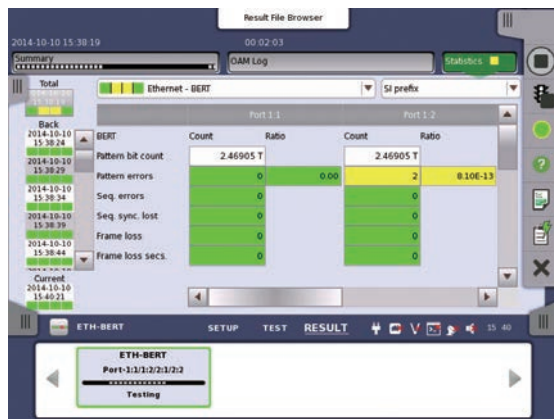
- All-in-one transport tester
  - Supports testing from 1.5 Mbps to 100 Gbps
  - OTN, Ethernet, CPRI/OBSAI, Fibre Channel, SDH/SONET and PDH/Dsn
- OTN testing with Ethernet, CPRI, Fibre Channel, SDH/SONET client signals
- Easy and intuitive GUI
- Up to 4 ports at all rates
- Electrical interfaces of CAUI, XLAUI using optional extenders
- WLAN\*/Bluetooth\*/LAN connectivity
- PDF, CSV and XML report generation for documenting test results
- Remote operation using VNC or dedicated GUI operation software via Ethernet, WLAN
- Remote control (scripting, via Ethernet, WLAN, GPIB)
- Portable design for maximum portability
- Modular platform ensuring maximum return on investment

**Key 400G Benefits and Features:**

- World-first portable transport testers supporting simultaneous installation of four independent 100 Gbps ports
- Each 100 Gbps port supports 40 GigE/100 GigE and OTU3/3e1/3e2/4 interfaces
- Detailed client-signal analysis using Ethernet frame capture
- Support various OTN mappings including ODUflex
- FEC Performance tests using ITU-T O.182 recommended Poisson-distribution error insertion
- Display test results for four ports on one screen
- Event log
- Fiber end face inspection using VIP



\*: Available for certified countries and regions including USA, Canada, Japan and all EU countries.



Responsive troubleshooting using color indications



Comprehensive OTN Alarm/Error monitoring and BER testing

**Test Modules:**

- 10G Multirate Module MU110010A  
Up to 2 ports: 1.5 Mbps to 10 Gbps (SFP/SFP+, RJ45, BNC, RJ48, Bantam)



- 100G Multirate Module MU110011A  
Single port: 40 Gbps (CFP) or 100 Gbps (CFP)  
Up to 2 ports: 10 Mbps to 40 Gbps (QSFP+, SFP/SFP+, RJ45)



- 40/100G Module MU110012A  
Up to 2 ports: 40 Gbps to 100 Gbps (CXP, QSFP+)



\*: Two MU110012A's support 100G x 4 Client testing.

The Bluetooth® mark and logos are owned by Bluetooth SIG, Inc. and are used by Anritsu under license.