

Powerful Storage Area Networking (SAN) Testing

MT1100A
Network Master Flex



Many operators need to support Fibre Channel links in Storage Area Networks (SAN) together with other transport technologies like OTN, Ethernet, CPRI/OBSAI, SDH/SONET and PDH/DSn. Having one tool for all technologies is important for efficient testing. The multi-protocol Network Master Flex MT1100A with Fibre Channel option is the perfect tool for deploying Fibre Channel with support for testing links at rates of 1, 2, 4, 8 and 10 Gbps and it also supports other technologies like OTN, Ethernet, CPRI/OBSAI, SDH/SONET and PDH/DSn. The all-in-one MT1100A gives the user less equipment to maintain and learn, helping to reduce operating expenses.

The all-in-one MT1100A supports all the latest communications network technologies.

Selecting and installing up to two modules from a range of three module options supports all-in-one R&D, manufacturing, installation and maintenance tests of network and transport equipment operating at bit rates from 1.5 Mbps to 100 Gbps. The large, 12.1-inch color LCD touch panel with easy-to-use GUI plus remote operation of a full range of test functions over an Internet connection greatly improves test efficiency and helps cut costs.



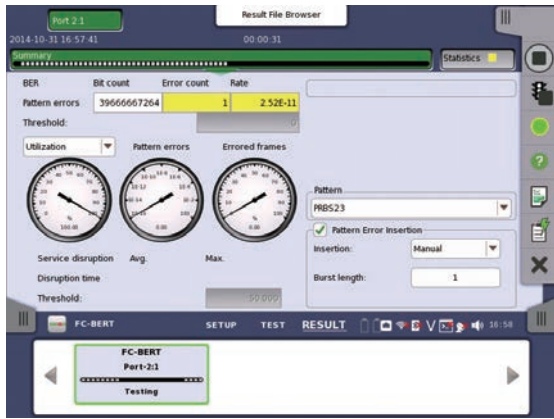
Key Platform Benefits and Features:

- All-in-one transport tester
 - Supports testing from 1.5 Mbps to 100 Gbps
 - OTN, Ethernet, CPRI/OBSAI, Fibre Channel, SDH/SONET and PDH/DSn
- OTN testing with Ethernet, CPRI, Fibre Channel, SDH/SONET client signals
- Easy and intuitive GUI
- Up to 4 ports at all rates
- Electrical interfaces of CAUI, XLAUI using optional extenders
- WLAN*/Bluetooth*/LAN connectivity
- PDF, CSV and XML report generation for documenting test results
- Remote operation using VNC or dedicated GUI operation software via Ethernet, WLAN
- Remote control (scripting, via Ethernet, WLAN, GPIB)
- Portable design for maximum portability
- Modular platform ensuring maximum return on investment

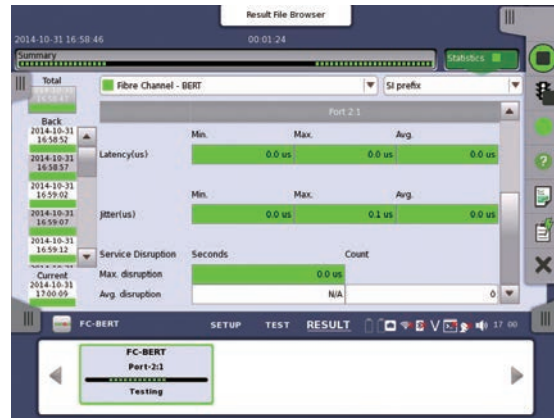
Key Fibre Channel Benefits and Features:

- 1GFC, 2GFC, 4GFC, 8GFC, and 10GFC tests
- Optional mapping to OTN
- Latency measurement
- BER tests including service disruption measurement
- Line alarm and error monitor
- Normal or Reflector mode
- Event log
- Fiber end face inspection using VIP

*: Available for certified countries and regions including USA, Canada, Japan and all EU countries.



Color indications give an easy overview of GO/NO-GO results



Powerful statistics include latency, packet jitter and service disruption information

Test Modules:

- 10G Multirate Module MU110010A
Up to 2 ports: 1.5 Mbps to 10 Gbps (SFP/SFP+, RJ45, BNC, RJ48, Bantam)



*: MU110010A supports Fibre Channel. (up to 10 Gbps)

- 100G Multirate Module MU110011A
Single port: 40 Gbps (CFP) or 100 Gbps (CFP)
Up to 2 ports: 10 Mbps to 40 Gbps (QSFP+, SFP/SFP+, RJ45)



*: MU110011A supports Fibre Channel. (up to 10 Gbps)

- 40/100G Module MU110012A
Up to 2 ports: 40 Gbps to 100 Gbps (CXP, QSFP+)



The Bluetooth® mark and logos are owned by Bluetooth SIG, Inc. and are used by Anritsu under license.