

NetWorks and TraceView

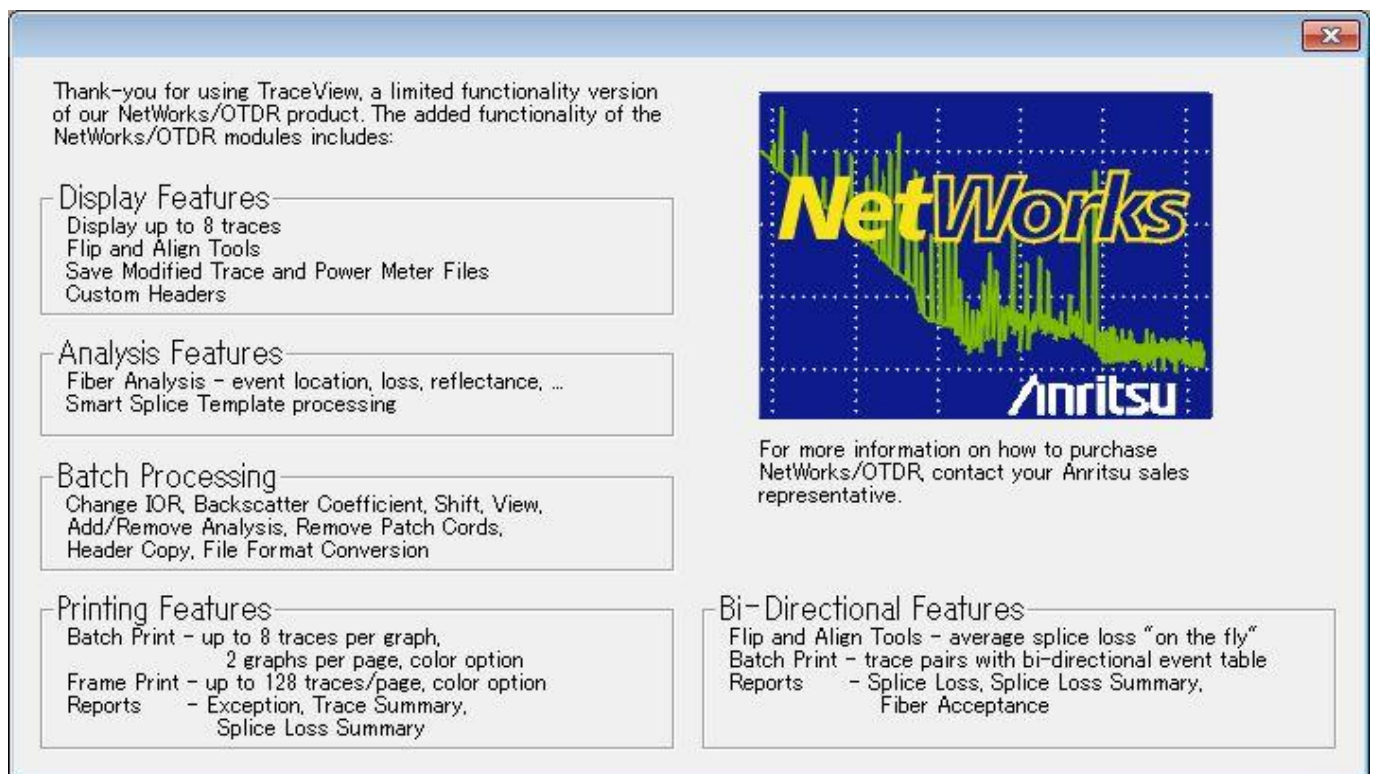
Difference of OTDR Trace Analysis Software

TraceView

- TraceView was developed to allow the user an entry level, free version of NetWorks with some restrictions. The following lists the capabilities of TraceView.
- Recall and overlay up to two traces (MT9083, MT9090A, CMA 5000/a, CMA4500, CMA4000/8800/40, TD-3000, PK7500, 383, Bellcore, TD-1000, TD-2000, TD-9980, TD-9960, TD-9950).
- Support standard and custom headers.
- Trace List file defines the traces to be processed.
- Print Current View - header, trace, and analysis results.
- Graph up to 2 traces with 4 view modes: Display from Origin, A Cursor, B Cursor, and Anywhere.
- Graph features include axes, legend, A/B cursor, zoom, scroll, shift, stack, LSA cursors, and event symbols.
- User control over parameter preferences such as distance units.
- Full manual measurements using dual cursors, for loss modes of Splice, Two-point, Two-point Attenuation Corrected, Two-point LSA, dB/Km, dB/Km LSA, ORL from Origin or ORL A-to-B.
- Display and edit trace parameters, headers, and events.
- View and print CMA 5000/a, CMA4500 and CMA4000 Power Meter files.
- On-line help.

TraceView is a viewing program with limited functionality and does not allow modified traces or power meter readings to be saved.

- The additional features found in NetWorks are listed on start-up of TraceView so everyone is aware of the advantages that are offered by NetWorks the full version.



TraceView start-up splash screen

NetWorks

- NetWorks was developed so many OTDR traces could be adjusted and manipulated quickly and simply off-line (e.g. not on the OTDR). It allows the user to perform many advance functions and such as,
 - o Reporting,
 - On individual fibers,
 - On change on a fiber over time,
 - On Bi-Directional splice loss,
 - For single fibers,
 - For many fibers at once.
 - Etc.
 - o Batch Processing,
 - Please see below for more details.
 - o Mass adjustment of traces,
 - File format,
 - IOR,
 - Remove launch spool
 - Etc
 - o This and much more functionality was to allow the user (normally a person that is an expert on optical issue) to sit in his office and evaluate and create reports of the traces that had been taken by field crews earlier that day. It was also designed to allow the user to manipulate many traces files at ones thus reducing the time required to complete the complicated job.
 - For Example: Hundreds of traces taken in the field can all be converted quickly and simply to the GR196 (Bellcore standard) to be submitted someone that only allows this format.

A quick overview of key NetWorks features:

- Display Features,
 - o **Display up to 8 traces.** This allows the user to simultaneously have 8 optical traces displayed at once on the screen,
 - o **Flip and Align Tools.** With these tools you have the ability to flip one or several optical traces on the screen thus while looking at bi-directional traces you can insure the slices line up, the Align allows you user to fix the traces to the “A” cursor thus the two traces always meet at the cursor. This allows the user to scroll down the distance of both fibers insuring the event happened at the same exact location.
 - o **Save Modified Trace and Power Meter Files.** If you are to adjust any parameters thresholds you can then save the traces.
 - o **Custom Headers.** Create custom header templates that can be used by the software or placed onto the CMA for all future traces.
- Analysis Features,
 - o **Fiber Analysis.** Be able to re-analysis the fiber (re-run the FAS software) over a trace (or multiple in Batch Processing) after adjusting the Analysis setting such as the event threshold etc.
 - o **Smart Splice Template.** As fusion splices have become very good no OTDR is able to pick up every splice on every fiber so NetWorks offers the user the ability to set user configurable template that analysis the splices on a multiple fiber then indicates to the user what is considers is a splice location or not. The user can then batch process these splice location onto all traces.
- Batch Processing,
 - o **Change all post configurable setting.** This section allows the user to change all selected traces (can be hundreds) with simple tick the box format. It allows the user to adjust one trace or setting then have the same adjustments take place across many traces.
- Printing Features,
 - o **Batch Print.** Allow the user to print many traces in many formats, adjust the number of event information per page etc.
 - o **Frame Print.** Allows the user to print the graph of the optical trace and multiples per page (up to 16per page). This is ideal for commissioning details.
 - o **Reports, Exception, Trace Summary, Splice Loss Summary.** Allows the user to generate many reports quickly and simply. **As well as export the information into a common format that can be opened by such programs as Excel.**
- Bi-Directional Features,
 - o **Flip and Align.** As mentioned above.
 - o **Batch Print.** Complete many Bi-Directional reports or multiple fibers in a single report.

TraceView or NetWorks - Which is right?

Some differentiators on how TraceView and NetWorks could be positioned.

- **TraceView** offers the user the ability to,
 - o View two traces simultaneously
 - Check event locations,
 - o View two fibers and print the results.
 - Report to the left.



TraceView_Print

- **NetWorks** offers all the abilities of TraceView Plus many very advance functions, many of these mentioned above,
 - o Able to display up to 8traces at once on the screen,
 - o Able to manipulate 100's of traces at once,
 - o The ability to do Bi-Directional report's on a single fiber, this would allow the user to know if a fiber has to be re-spliced while he is on site, (including flip on screen of traces)
 - o Bi-Directional report's on all fibers in the trace list, and highlight areas that exceed the user configurable settings,
 - o The SAVE function is enabled, so measurements can be saved back to the trace file.

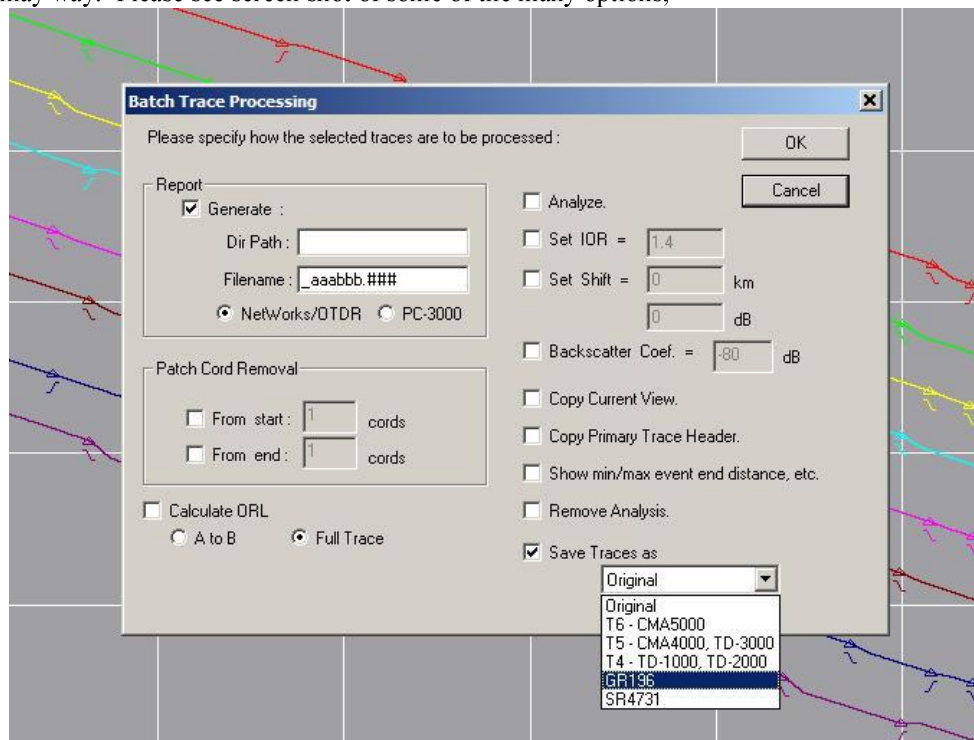


NetWorks
Bi-Directional.PDF



NetWorks
Bi-Directional Report.

- You also have the ability to **"Batch Process"** all traces in the Trace List, buy doing this you can adjust the original trace in may way. Please see screen shot of some of the many options,



Batch Process options screen

• **United States**

Anritsu Company

1155 East Collins Blvd., Suite 100, Richardson,
TX 75081, U.S.A.
Toll Free: 1-800-267-4878
Phone: +1-972-644-1777
Fax: +1-972-671-1877

• **Canada**

Anritsu Electronics Ltd.

700 Silver Seven Road, Suite 120, Kanata,
Ontario K2V 1C3, Canada
Phone: +1-613-591-2003
Fax: +1-613-591-1006

• **Brazil**

Anritsu Eletrônica Ltda.

Praça Amadeu Amaral, 27 - 1 Andar
01327-010 - Bela Vista - São Paulo - SP - Brazil
Phone: +55-11-3283-2511
Fax: +55-11-3288-6940

• **Mexico**

Anritsu Company, S.A. de C.V.

Av. Ejército Nacional No. 579 Piso 9, Col. Granada
11520 México, D.F., México
Phone: +52-55-1101-2370
Fax: +52-55-5254-3147

• **United Kingdom**

Anritsu EMEA Ltd.

200 Capability Green, Luton, Bedfordshire, LU1 3LU, U.K.
Phone: +44-1582-433200
Fax: +44-1582-731303

• **France**

Anritsu S.A.

12 avenue du Québec, Bâtiment Iris 1- Silic 612,
91140 VILLEBON SUR YVETTE, France
Phone: +33-1-60-92-15-50
Fax: +33-1-64-46-10-65

• **Germany**

Anritsu GmbH

Nemetschek Haus, Konrad-Zuse-Platz 1
81829 München, Germany
Phone: +49-89-442308-0
Fax: +49-89-442308-55

• **Italy**

Anritsu S.r.l.

Via Elio Vittorini 129, 00144 Roma, Italy
Phone: +39-6-509-9711
Fax: +39-6-502-2425

• **Sweden**

Anritsu AB

Borgarfjordsgatan 13A, 164 40 KISTA, Sweden
Phone: +46-8-534-707-00
Fax: +46-8-534-707-30

• **Finland**

Anritsu AB

Teknobulevardi 3-5, FI-01530 VANTAA, Finland
Phone: +358-20-741-8100
Fax: +358-20-741-8111

• **Denmark**

Anritsu A/S (Service Assurance)

Anritsu AB (Test & Measurement)

Kay Fiskers Plads 9, 2300 Copenhagen S, Denmark
Phone: +45-7211-2200
Fax: +45-7211-2210

• **Russia**

Anritsu EMEA Ltd.

Representation Office in Russia

Tverskaya str. 16/2, bld. 1, 7th floor.
Russia, 125009, Moscow
Phone: +7-495-363-1694
Fax: +7-495-935-8962

• **United Arab Emirates**

Anritsu EMEA Ltd.

Dubai Liaison Office

P O Box 500413 - Dubai Internet City
Al Thuraya Building, Tower 1, Suit 701, 7th Floor
Dubai, United Arab Emirates
Phone: +971-4-3670352
Fax: +971-4-3688460

• **Singapore**

Anritsu Pte. Ltd.

60 Alexandra Terrace, #02-08, The Comtech (Lobby A)
Singapore 118502
Phone: +65-6282-2400
Fax: +65-6282-2533

• **India**

Anritsu Pte. Ltd.

India Branch Office

3rd Floor, Shri Lakshminarayan Niwas, #2726, 80 ft Road,
HAL 3rd Stage, Bangalore - 560 075, India
Phone: +91-80-4058-1300
Fax: +91-80-4058-1301

• **P.R. China (Shanghai)**

Anritsu (China) Co., Ltd.

Room 1715, Tower A CITY CENTER of Shanghai,
No.100 Zunyi Road Chang Ning District,
Shanghai 200051, P.R. China
Phone: +86-21-6237-0898
Fax: +86-21-6237-0899

• **P.R. China (Hong Kong)**

Anritsu Company Ltd.

Units 4 & 5, 28th Floor, Greenfield Tower, Concordia Plaza,
No. 1 Science Museum Road, Tsim Sha Tsui East,
Kowloon, Hong Kong, P.R. China
Phone: +852-2301-4980
Fax: +852-2301-3545

• **Japan**

Anritsu Corporation

8-5, Tamura-cho, Atsugi-shi, Kanagawa, 243-0016 Japan
Phone: +81-46-296-1221
Fax: +81-46-296-1238

• **Korea**

Anritsu Corporation, Ltd.

502, 5FL H-Square N B/D, 681
Sampyeong-dong, Bundang-gu, Seongnam-si,
Gyeonggi-do, 463-400 Korea
Phone: +82-31-696-7750
Fax: +82-31-696-7751

• **Australia**

Anritsu Pty. Ltd.

Unit 21/270 Ferntree Gully Road, Notting Hill,
Victoria 3168, Australia
Phone: +61-3-9558-8177
Fax: +61-3-9558-8255

• **Taiwan**

Anritsu Company Inc.

7F, No. 316, Sec. 1, NeiHu Rd., Taipei 114, Taiwan
Phone: +886-2-8751-1816
Fax: +886-2-8751-1817

Please Contact:

