

# CMA 3000

## SPECIFICATIONS

### FrontSim software option



#### Remote access of the CMA 3000

CMA 3000 is Anritsu's next-generation portable and future proof field tester for the installation and maintenance of access and core networks. The CMA 3000 covers a wide range of applications, from fast first-aid troubleshooting to comprehensive, in-depth and all-layer analysis of transmission problems.

For several applications it is relevant to access the instrument remotely. This is easily achieved by running the FrontSim software option on a PC and the CMA 3000. The FrontSim program carries the screens and alarm indicator LEDs of a remote CMA 3000 to a PC. Likewise mouse-clicks on the PC are transferred to the remote instrument. This allows you to operate the CMA 3000 instrument and view results on a PC exactly as had you been working on the instrument itself, only requirement is that both the PC and the CMA 3000 are connected to a LAN or to the Internet. Furthermore measurement result reports and instrument configuration files can be transferred via FrontSim. Finally upgrade of the instrument SW can be done via FrontSim.

It's possible to open several different FrontSim applications on one PC all at once. This enables you to simultaneously check the results of a number of instruments from one PC.

With the FrontSim application you can define a list of connections to remote instruments, specifying a connection name and the IP address of each instrument. This is useful when the CMA 3000 instruments have designated fixed IP addresses, making it very easy to access the instruments by merely selecting from the list shown on your PC.

Key Features	Key Applications
<ul style="list-style-type: none"> <li>Operate the CMA 3000 from a PC</li> <li>Get CMA 3000 screens and alarm indicator LEDs shown on a remote PC</li> <li>Simultaneous access to several CMA 3000 instruments</li> <li>Transfer of measurement result reports to the PC</li> <li>Exchange of instrument configuration files between the PC and the CMA 3000</li> <li>Easy selection of remote instrument from a connection list</li> <li>Easy grabbing of instrument screens from the PC</li> <li>Remote upgrade of the basic instrument software</li> </ul>	<ul style="list-style-type: none"> <li>Remote access</li> <li>Long-term surveillance</li> <li>Multi-site surveillance</li> <li>Display of screens through a projector</li> <li>Documentation and training</li> </ul>

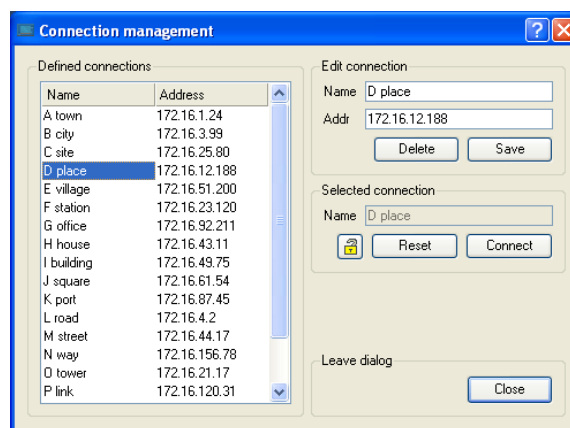


Fig.1: The connection list provides easy access to instruments located remotely.

### Long-term surveillance

If there is an intermittent error in a remote part of your telecom network you can initiate a long-term surveillance measurement. But it becomes very costly if a field technician frequently has to drive long distances to check the measurement status and verify that an error has occurred.

The FrontSim application allows you to access the CMA 3000 remotely. This way you can easily check the measurement status and effectively cut time spent on the road. In fact, this means that you only have to travel to the distant location when setting up and taking down the instrument. You can change measurement settings or transfer instrument setting files from PC to instrument and launch of new measurements via FrontSim. After a measurement is completed the measurement result report can be transferred to the PC.



Fig.2: With FrontSim you can operate a remote CMA 3000 from a PC.

### Multi-site surveillance

The FrontSim may be used to remotely access a number of CMA 3000 in the network from one PC. This can be used for analysis of network-wide performance or remotely examining a number of individual tests.



Fig.3: In compact mode several FrontSim sessions can be monitored simultaneously on the PC screen.

### Accessing a CMA 3000 from your PC

Even if the CMA 3000 is placed in vicinity to your office it can be convenient to have remote access to the instrument directly from a local PC, e.g. if the CMA 3000 is performing measurements in a nearby switch room.

### Display of screens on a data projector

If you need to present measurement results to a larger audience it can also be convenient to have remote access to the instrument via a PC. Instrument screens, brought to the PC, can be projected to a large screen through a PC-connected data projector.

### Grabbing of screen caps for illustration purposes

In some cases it is useful to grab shots of instrument result and setup screens via the PC and then copy the screen caps into Windows applications like word processing and presentation. This is an easy way to communicate instrument setups for specific applications.

It is also convenient for documentation purposes and for creation of educational material. When a screen is visible in the FrontSim you just press a soft key to grab the screen, place it in the Windows Clipboard and then paste it into the Windows application.

### Upgrade instrument SW via FrontSim

The user can remotely upgrade the basic instrument software using the FrontSim option. This is an important benefit for customers using the instrument in far away, unmanned sites, with FrontSim as the normal means of access to measurement results and operation.

## Specifications

The description in this specification sheet and the specifications below list the functionality of the version 1.10 (or higher) of the PC part of FrontSim. In addition the FrontSim option must be installed in the CMA 3000 to enable remote operation of the instrument and it must run SW version 3.32 or higher.

For further information on the functionality of the basic configuration please refer to the CMA 3000 basic instrument specifications sheet.

Specifications	
<b>General</b>	<ul style="list-style-type: none"> <li>• Displays screens and alarm indicator LEDS of a remote CMA 3000 on the PC screen</li> <li>• Transfers mouse-clicks on the PC to the remote CMA 3000</li> <li>• Measurement result reports can be transferred from the a remote CMA 3000 to a PC</li> <li>• Instrument setting files can be exchanged between a remote CMA 3000 and a PC</li> <li>• Stored measurement files can be exchanged between a remote CMA 3000 and a PC</li> <li>• Software upgrades of a remote CMA 3000 can be made via FrontSim</li> <li>• A remote CMA 3000 can be reset via FrontSim</li> <li>• Diagnostics files from a remote CMA 3000 can be transferred to a PC</li> </ul>
<b>Connection</b>	Connection through LAN or Internet to a specific IP address
<b>Connection list</b>	Up to 100 entries. For each entry a name and the IP address of the remote instrument is specified
<b>Access modes</b>	<p>Direct access:</p> <ul style="list-style-type: none"> <li>• The user gets immediate access to the instrument and has the access until he disconnects or another user connects to the instrument.</li> </ul> <p>Log on with user name:</p> <ul style="list-style-type: none"> <li>• The user is prompted for a user name at log on</li> <li>• The user has access to the instrument until he disconnects (logs off) or another user logs on with administrator password</li> </ul> <p>Log on with user name and password:</p> <ul style="list-style-type: none"> <li>• A normal and an administrator password must be defined.</li> <li>• The user is prompted for a user name and password at log on</li> <li>• When logging on with the normal password the user has access to the instrument until he disconnects (logs off) or another user logs on with administrator password</li> <li>• When logging on with the normal administrator the user has access to the instrument until log off.</li> </ul>
<b>Display modes</b>	<p>Normal mode</p> <ul style="list-style-type: none"> <li>• The FrontSim application fills up the available screen space</li> </ul> <p>Compact mode</p> <ul style="list-style-type: none"> <li>• The FrontSim application fills up approx. 25% of the available screen space, allowing several FrontSim sessions to be displayed simultaneously</li> </ul>
<b>Screen grapping</b>	The current instrument screen shown in FrontSim is placed in the Windows Clipboard by pressing a soft key in the PC part of FrontSim
<b>Additional accessories</b>	<ul style="list-style-type: none"> <li>• RJ45-RJ45 LAN cable for normal connection through a network</li> <li>• RJ45-RJ45 Crossed network cable for direct PC-to-CMA 3000 connection</li> </ul>

Requirements for the PC running the PC part of FrontSim	
<b>PC</b>	<ul style="list-style-type: none"> <li>• PC with Intel Pentium or compatible processor</li> <li>• CD-ROM disk drive</li> <li>• Ethernet 10/100 LAN interface</li> </ul>
<b>Windows version</b>	Windows 95®, Windows 98®, Windows NT®, Windows 2000®, Windows XP®, Windows Vista® or Windows 7®
<b>Hard disk space</b>	Approx. 5 Mbytes
<b>Memory</b>	As required by Windows
<b>Display</b>	<ul style="list-style-type: none"> <li>• 1280 by 1024, 16 bit colors or better</li> <li>• 1024 by 768, 16 bit colors or better may be used. Approx. 80% of the front panel image will be shown, and both instrument display and all keys will be visible</li> </ul>

Other requirements	
<b>Internet connections</b>	The remote instrument must be assigned a fixed IP address in the public Internet
<b>LAN connections</b>	The PC and the remote instrument have to be connected to the same Local Area Network
<b>Bandwidth</b>	A bandwidth of min. 800 kbps is recommended for transport of the data stream from instrument to PC

## **Anritsu Corporation**

5-1-1 Onna, Atsugi-shi, Kanagawa, 243-8555 Japan  
Phone: +81-46-223-1111  
Fax: +81-46-296-1264

## • **U.S.A.**

### **Anritsu Company**

1155 East Collins Blvd., Suite 100, Richardson,  
TX 75081, U.S.A.  
Toll Free: 1-800-267-4878  
Phone: +1-972-644-1777  
Fax: +1-972-671-1877

## • **Canada**

### **Anritsu Electronics Ltd.**

700 Silver Seven Road, Suite 120, Kanata,  
Ontario K2V 1C3, Canada  
Phone: +1-613-591-2003  
Fax: +1-613-591-1006

## • **Brazil**

### **Anritsu Eletrônica Ltda.**

Praça Amadeu Amaral, 27 - 1 Andar  
01327-010 – Bela Vista - São Paulo - SP - Brasil  
Phone: +55-11-3283-2511  
Fax: +55-11-3288-6940

## • **Mexico**

### **Anritsu Company, S.A. de C.V.**

Av. Ejército Nacional No. 579 Piso 9, Col. Granada  
11520 México, D.F., México  
Phone: +52-55-1101-2370  
Fax: +52-55-5254-3147

## • **U.K.**

### **Anritsu EMEA Ltd.**

200 Capability Green, Luton, Bedfordshire LU1 3LU, U.K.  
Phone: +44-1582-433200  
Fax: +44-1582-731303

## • **France**

### **Anritsu S.A.**

12 avenue du Québec, Batiment Iris 1-Silic 612  
91140 VILLEBON SUR YVETTE, France  
Phone: +33-1-60-92-15-50  
Fax: +33-1-64-46-10-65

## • **Germany**

### **Anritsu GmbH**

Nemetschek Haus, Konrad-Zuse-Platz 1  
81829 München, Germany  
Phone: +49-89-442308-0  
Fax: +49-89-442308-5

## • **Italy**

### **Anritsu S.r.l.**

Via Elio Vittorini, 129, 00144 Roma, Italy  
Phone: +39-6-509-9711  
Fax: +39-6-502-2425

## • **Sweden**

### **Anritsu AB**

Borgarfjordsgatan 13A, 164 40 KISTA, Sweden  
Phone: +46-8-534-707-00  
Fax: +46-8-534-707-30

## • **Finland**

### **Anritsu AB**

Teknobulevardi 3-5, FI-01530 VANTAA, Finland  
Phone: +358-20-741-8100  
Fax: +358-20-741-8111

## • **Denmark**

### **Anritsu A/S**

(Service Assurance)

### **Anritsu AB Denmark**

(Test & Measurement except Service Assurance)  
Kay Fiskers Plads 9, 2300 Copenhagen S, Denmark  
Phone: +45-72112200  
Fax: +45-72112210

## • **Russia**

### **Anritsu EMEA Ltd.**

#### **Representation Office in Russia**

Tverskaya str. 16/2, bld. 1, 7th floor.  
Russia, 125009, Moscow  
Phone: +7-495-363-1694  
Fax: +7-495-935-8962

## • **United Arab Emirates**

### **Anritsu EMEA Ltd.**

#### **Dubai Liaison Office**

PO Box 500413 - Dubai Internet City  
Al Thuraya Building, Tower 1, Suit 701, 7th Floor  
Dubai, United Arab Emirates  
Phone: +971-4-3670352  
Fax: +971-4-3688460

## • **Singapore**

### **Anritsu Pte Ltd.**

60 Alexandra Terrace, #02-08, The Comtech (Lobby A)  
Singapore 118502  
Phone: +65-6282-2400  
Fax: +65-6282-2533

## • **India**

### **Anritsu Pte. Ltd.**

#### **India Branch Office**

3rd Floor, Shri Lakshminarayan Niwas, #2726, 80 ft Road,  
HAL 3rd Stage, Bangalore - 560 075, India  
Phone: +91-80-4058-1300  
Fax: +91-80-4058-1301

## • **P.R. China (Hong Kong)**

### **Anritsu Company Ltd.**

Units 4 & 5, 28th Floor, Greenfield Tower, Concordia Plaza,  
No. 1 Science Museum Road, Tsim Sha Tsui East,  
Kowloon, Hong Kong  
Phone: +852-2301-4980  
Fax: +852-2301-3545

## • **P.R. China (Beijing)**

### **Anritsu Company Ltd.**

#### **Beijing Representative Office**

Room 2008, Beijing Fortune Building,  
No. 5, Dong-San-Huan Bei Road,  
Chao-Yang District, Beijing 10004, P.R. China  
Phone: +86-10-6590-9230  
Fax: +86-10-6590-9235

## • **Korea**

### **Anritsu Corporation, Ltd.**

8F Hyunjuk Building, 832-41, Yeoksam Dong,  
Kangnam-ku, Seoul, 135-080, Korea  
Phone: +82-2-553-6603  
Fax: +82-2-553-6604

## • **Australia**

### **Anritsu Pty. Ltd.**

Unit 21/270 Ferntree Gully Road, Notting Hill,  
Victoria 3168 Australia  
Phone: +61-3-9558-8177  
Fax: +61-3-9558-8255

## • **Taiwan**

### **Anritsu Company Inc.**

7F, No. 316, Sec. 1, Neihu Rd., Taipei 114, Taiwan  
Phone: +886-2-8751-1816  
Fax: +886-2-8751-1817