

Anritsu - GRL

USB 3.1 Rx Test Application

Release Note

First Edition

This software is released for USB 3.1 Rx Test.

Table of Contents

Item	Content
1. Release Software ...Page 2	Provides information for this release.
2. Peripheral Device ...Page 2	Shows the list of devices that can be controlled by this software.
3. Added Functions ...Page 3	Describes added functions for this release.
4. Bug Fixes ...Page 3	Describes bug fixes in the released software version.
5. Remaining Known Bugs ...Page 3	Describes known software bugs in this version to be fixed in future releases.
6. Usage Notes ...Page 4	Describes precautions for using this software.
Appendix ...Page 7	Describes Quick Startup Guide and troubleshooting procedures.

1. Released Software

The certificate software versions for Keysight Scope are shown in the table.

Name	Keysight (DSAZ634A)
GRL USB3.1 Rx Test Application	V1.00.116
Anritsu MX190000A	V2.05.08
Anritsu MX183000A	V3.04.09
Scope	V06.00.01001

2. Peripheral Devices

The peripheral devices for the application are shown in the table.

Model	Name
MP1900A	Signal Quality Analyzer-R
MU181000B	12.5GHz 4port Synthesizer
MU181500B	Jitter Modulation Source
MU195020A	21G/32G bit/s SI PPG
MU195040A	21G/32G bit/s SI ED
MU195050A	Noise Generator

For the installation position of the mainframe, refer to the Anritsu website (<https://www.anritsu.com>).

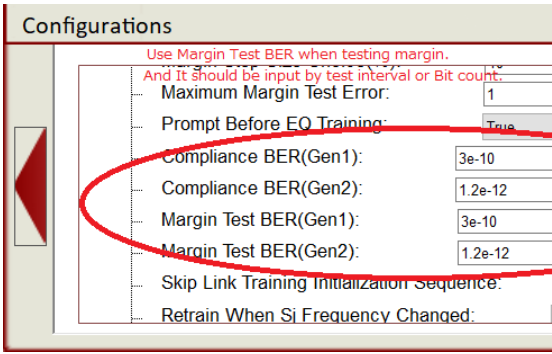
3. Added Functions

None

4. Bug Fixes

None

5. Remaining Known Bugs

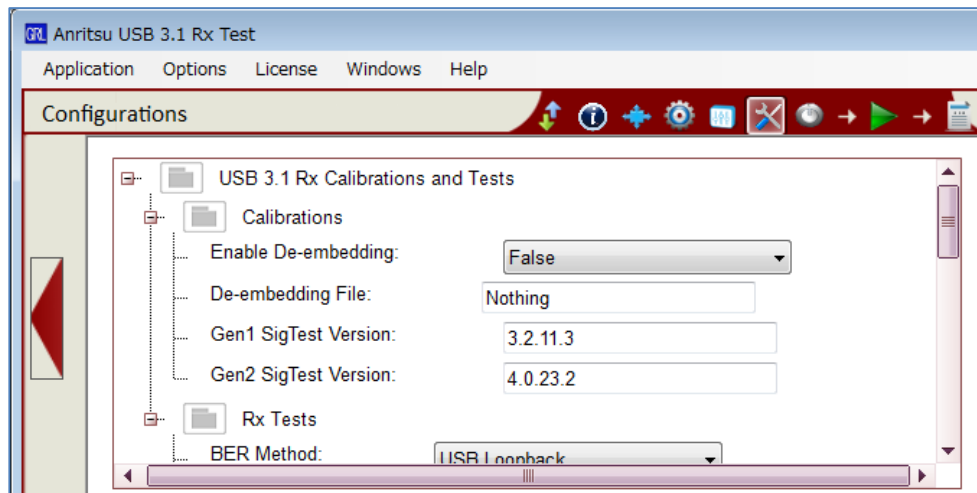
Version	Item (Management Number)	Issue
V1.00.116	BER target of margin test is conflicted A bug causing Margin Test to refer to a wrong parameter.	<p>Though Margin Test for Gen1/2 should refer to the Margin Test BER value as the threshold, it refers to the Compliance BER value.</p>  <p>Configurations</p> <p>Use Margin Test BER when testing margin. And It should be input by test interval or Bit count.</p> <p>Maximum Margin Test Error: 1</p> <p>Prompt Before EQ Training: True</p> <p>Compliance BER(Gen1): 3e-10</p> <p>Compliance BER(Gen2): 1.2e-12</p> <p>Margin Test BER(Gen1): 3e-10</p> <p>Margin Test BER(Gen2): 1.2e-12</p> <p>Skip Link Training Initialization Sequence:</p> <p>Retrain When Si Frequency Changed:</p>

6. Usage Notes

The precautions for using each version are described below.

6.1 How to set SigTest version and template files

To change the versions of SigTest used for calibration, edit the following version numbers.



SigTest template depends on the file in:

C:\GRL\Rx Test Solution\Applications\USB3_1_AN_RxTest\SigTestPathSetup

To change template files, edit file names in this text file.

```

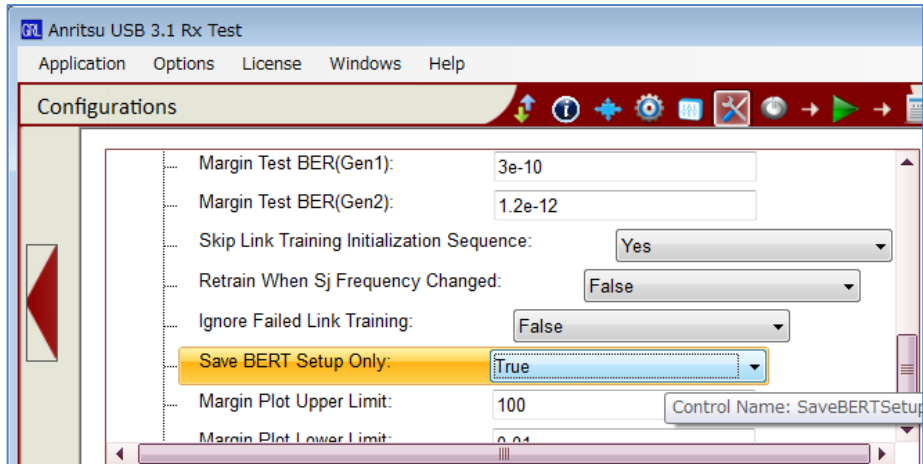
Template_3.2.11.3.txt - Notepad
File Edit Format View Help
RjCalibration_Gen1_5G_Type-C=USB_3_5GB\USB_3_5Gb_CP1_Rj_Cal_Type_C.dat
RjCalibration_Gen1_5G_Other=USB_3_5GB\USB_3_5Gb_CP1.dat
RjCalibration_Gen1_10G=USB_3_10GB\USB_3_10Gb_Rj_Cal.dat

sjCalibration_Gen1_5G_Type-C=USB_3_5GB\USB_3_5Gb_CP0_RjIN_sjCal_Type_C.dat
sjCalibration_Gen1_5G_Other=USB_3_5GB\USB_3_5Gb_CP0_RjIN_sjCal.dat
sjCalibration_Gen1_10G=USB_3_10GB\USB_3_10Gb_sj_Cal.dat

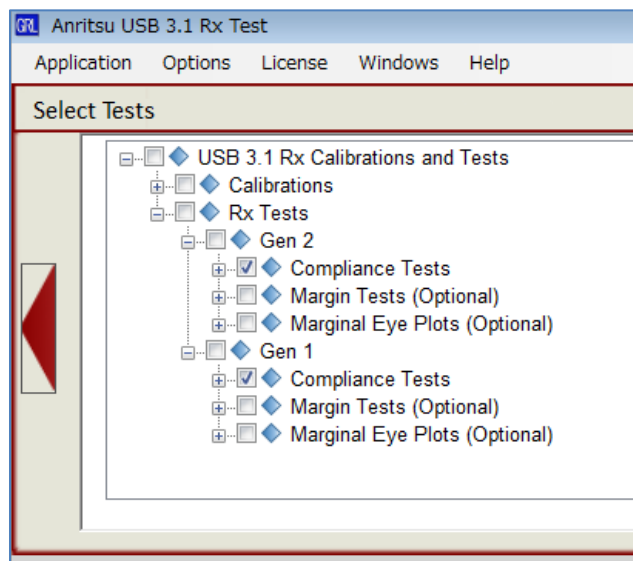
EyeCalibration_Gen1_5G=USB_3_5GB\USB_3_5Gb_CP0_RjIN.dat
EyeCalibration_Gen2_10G=USB_3_10GB\USB_3_10Gb_CP9_RX_CAL_CTLLE_N5dB.dat
    
```

6.2 How to save calibration results to BERT

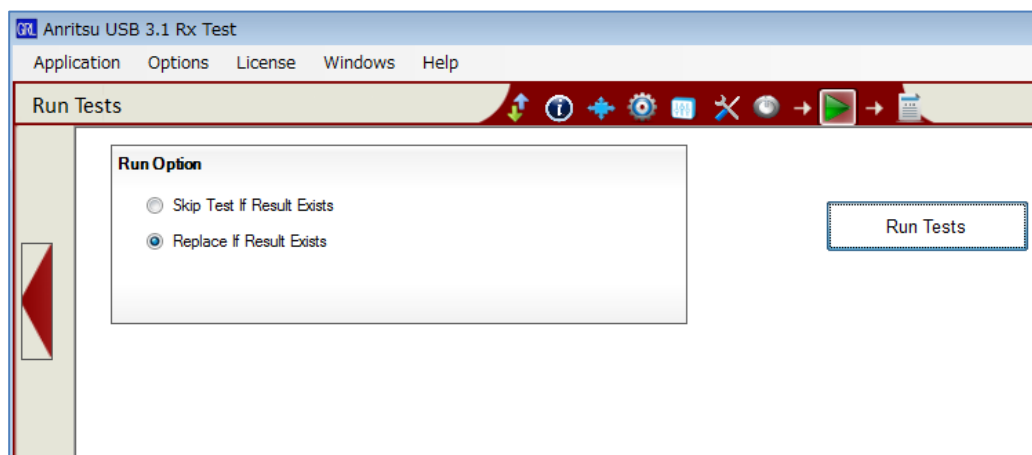
1. Set **Save BERT Setup Only** to **True**.



2. On the **Select Tests** tab, expand **Rx Tests**, and then **Gen1** and **Gen2**, and select the **Compliance Tests** check boxes.



3. Click **Run Tests** to start saving calibration results.



The directory to save created Quick Save files is:

C:\Configurations\Anritsu USB 3.1 Rx Test

Final_Setting_LONG_Gen1_5G__S1~8.CND

Final_Setting_LONG_Gen2_10G__S1~9.CND

Final_Setting_SHORT_Gen1_5G__S1~8.CND

Final_Setting_SHORT_Gen2_10G__S1~9.CND

6.3 Note on Coaxial Cable Connection

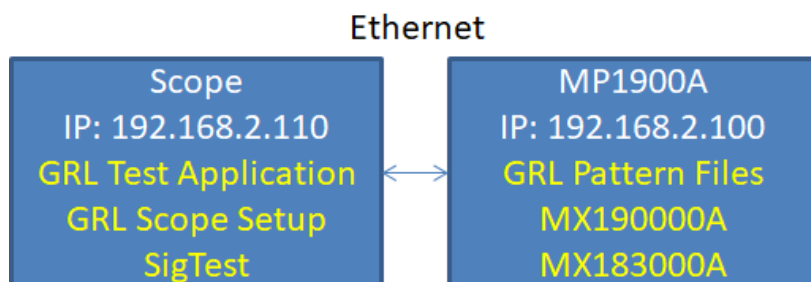
When an unexpected error occurs during calibration or test, check the coaxial cable connection first. Due to the complex connection, POS and NEG are very easy to mistake. Improper connection causes an unexpected error.

Appendix

A. Quick Startup Guide

1. Connect instruments with Ethernet cables as shown below.
2. Set the IP addresses as shown below. These can be set in the Network and Sharing Center (Windows OS feature).
3. Install all applications as shown below (Yellow letters).

- Recommended connection



4. Launch application and configure equipment settings.
Enter the scope address as below, and click . If the setting and connection are correct, the button will turn green.

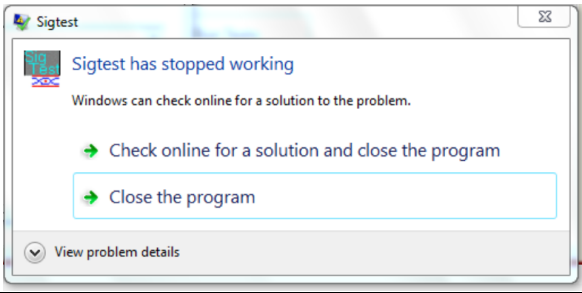
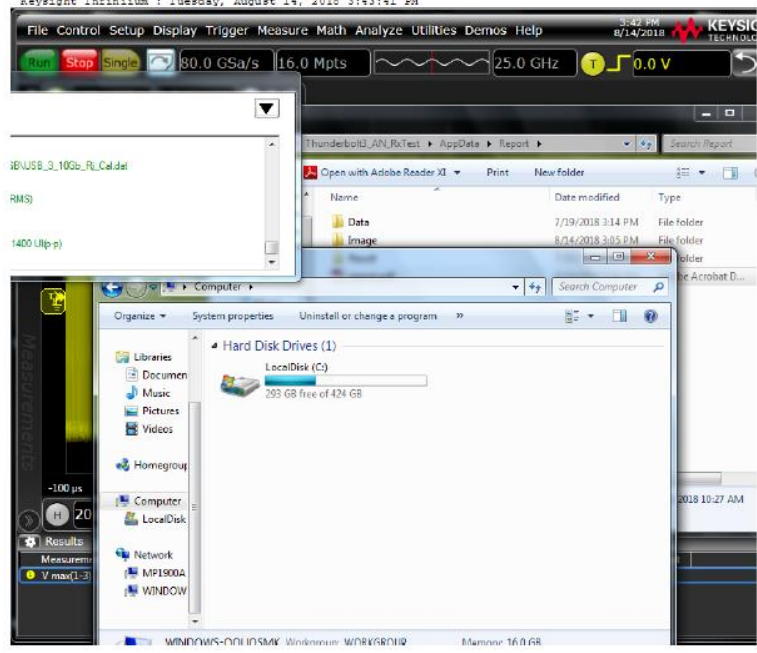
IP address and port setting examples

```
Scope: TCPIP0::localhost::inst0::INSTR
MP1800A/MP1900A: TCPIP0::192.168.2.100::5001::SOCKET*
MX183000A: TCPIP0::192.168.2.100::5000::SOCKET*
```

* Port numbers should be set for MX190000A and MX183000A.

B. Troubleshooting

If you encounter any errors during calibration or testing, check as follows.

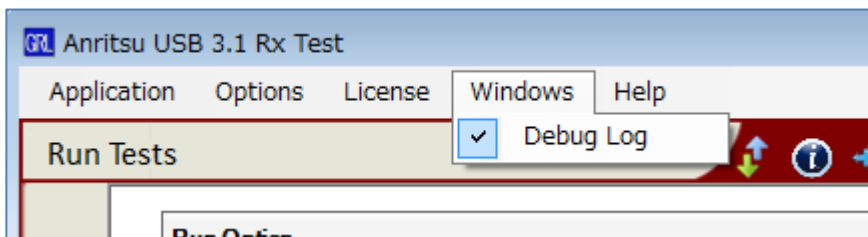
Problems	Description
<p>A SigTest error message is displayed when calibrating EH/EW.</p>	<p>Sometimes a SigTest error message is displayed and SigTest has stopped working when calibrating EH/EW. Click on Close the program when the message is shown.</p> 
<p>Waveform screenshots in a report include other software windows.</p>	<p>Other software windows are overlapping the waveform images. When operating other software, using an external display is recommended.</p> 
<p>DE/PS calibration failure SJ, RJ calibration failure Final EH/EW calibration failure</p>	<ul style="list-style-type: none"> ➤ Check the RF connections. Especially, the connection polarity (Pos/Neg) and the trigger connection (PPG Aux Out) are easy to mistake. ➤ Check the software version. A different version of software may cause an unexpected error. ➤ Check the SigTest version. To confirm the latest version of SigTest, visit the USB-IF website (http://www.usb.org/developers/tools/#sigHSETT).

For more information, refer to the following documents:

M3T-1ETMP1900A0016 - USB3.1_Compliance_Test_Demo_Guide.pptx

M3T-1QAMP1900A0237 - MP1900A USB Link Training Troubleshooting Guide_00.docx

Debug Log would be helpful to isolate the cause of the issue.
On the **Windows** menu, select **Debug Log**.



To resolve the issue, copy the following messages and send them to Service Infrastructure Solutions Division.

