

G0430A PCIe5 Re-Driver Set Operation Manual

Seventh Edition

For safety and warning information, please read this manual before attempting to use the equipment.
Keep this manual with the equipment.

ANRITSU CORPORATION

Safety Symbols

To prevent the risk of personal injury or loss related to equipment malfunction, Anritsu Corporation uses the following safety symbols to indicate safety-related information. Ensure that you clearly understand the meanings of the symbols BEFORE using the equipment. Some or all of the following symbols may be used on all Anritsu equipment. In addition, there may be other labels attached to products that are not shown in the diagrams in this manual.

Symbols used in manual



DANGER

This indicates a very dangerous procedure that could result in serious injury or death if not performed properly.



WARNING

This indicates a hazardous procedure that could result in serious injury or death if not performed properly.



CAUTION

This indicates a hazardous procedure or danger that could result in light-to-severe injury, or loss related to equipment malfunction, if proper precautions are not taken.

Safety Symbols Used on Equipment and in Manual

The following safety symbols are used inside or on the equipment near operation locations to provide information about safety items and operation precautions. Ensure that you clearly understand the meanings of the symbols and take the necessary precautions BEFORE using the equipment.



This indicates a prohibited operation. The prohibited operation is indicated symbolically in or near the barred circle.



This indicates an obligatory safety precaution. The obligatory operation is indicated symbolically in or near the circle.



This indicates a warning or caution. The contents are indicated symbolically in or near the triangle.



This indicates a note. The contents are described in the box.



These indicate that the marked part should be recycled.

G0430A
PCIe5 Re-Driver Set
Operation Manual

15 April 2022 (First Edition)
28 November 2022 (Seventh Edition)

Copyright © 2022, ANRITSU CORPORATION.

All rights reserved. No part of this manual may be reproduced without the prior written permission of the publisher.

The operational instructions of this manual may be changed without prior notice.

Printed in Japan

For Safety



CAUTION

Static Sensitive

Always take the following anti-static measures to prevent the internal circuit from being damaged when using this equipment.

- Wear a wrist strap connected to the ground terminal of this equipment.
- Connect the ground wires of this equipment, external measuring instruments and DUT before connecting a coaxial cable.
- Eliminate static electricity charged between the cores and outer conductors of an external device and the coaxial cable, before connecting this equipment and the external device.

Use in a Residential Environment

This equipment is designed for an industrial environment.

In a residential environment, this equipment may cause radio interference in which case the user may be required to take adequate measures.

Use in Corrosive Atmospheres

Exposure to corrosive gases such as hydrogen sulfide, sulfurous acid, and hydrogen chloride will cause faults and failures.

Note that some organic solvents release corrosive gases.

Anritsu Warranty

Anritsu Corporation provides the following warranty against stoppages arising due to manufacturing error, and against problems with operation occurring even though the procedures outlined in the operation manual were followed.

The equipment is warranted for one year from delivery and will be replaced free of charge only once under warranty.

After the expiration of one-year warranty period, replacement will not be made on the failed equipment. Please consider purchasing a new one.

The hardware and software warranties are not valid under any of the following conditions:

- The fault is due to mishandling, misuse, or unauthorized modification or repair of the equipment by the customer.
- The fault is due to severe usage clearly exceeding normal usage.
- The fault is due to improper or insufficient maintenance by the customer.
- The fault is due to natural disaster, including fire, wind or flood, earthquake, lightning strike, or volcanic ash, etc.
- The fault is due to damage caused by acts of destruction, including civil disturbance, riot, or war, etc.
- The fault is due to explosion, accident, or breakdown of any other machinery, facility, or plant, etc.
- The fault is due to use of non-specified peripheral or applied equipment or parts, or consumables, etc.
- The fault is due to use of a non-specified power supply or in a non-specified installation location.
- The fault is due to use in unusual environments^(Note).
- The fault is due to activities or ingress of living organisms, such as insects, spiders, fungus, pollen, or seeds.

In addition, this warranty is valid only for the original equipment purchaser. It is not transferable if the equipment is resold.

Anritsu Corporation shall assume no liability for damage or financial loss of the customer due to the use of or a failure to use this equipment, unless the damage or loss is caused due to Anritsu Corporation's intentional or gross negligence.

Note:

For the purpose of this Warranty, "unusual environments" means use:

- In places of direct sunlight
- In dusty places
- In liquids, such as water, oil, or organic solvents, and medical fluids, or places where these liquids may adhere

- In salty air or in place chemically active gases (sulfur dioxide, hydrogen sulfide, chlorine, ammonia, nitrogen dioxide, or hydrogen chloride etc.) are present
- In places where high-intensity static electric charges or electromagnetic fields are present
- In places where abnormal power voltages (high or low) or instantaneous power failures occur
- In places where condensation occurs
- In the presence of lubricating oil mists
- In places at an altitude of more than 2,000 m
- In the presence of frequent vibration or mechanical shock, such as in cars, ships, or airplanes

Anritsu Corporation Contact

In the event of this equipment malfunctions, please contact a sales office listed in Anritsu Service and Sales office. Contact information can be found on the last page of the printed version of this manual, and is available in a separate file on the PDF version.

Notes On Export Management

- We assume no responsibility if this product is re-exported and used without our approval since it may not comply with the safety standards, etc., of specific countries.
- This product and its manuals may require an Export License/Approval by the Government of the product's country of origin for re-export from your country.

Before re-exporting the product or manuals, please contact us to confirm whether they are export-controlled items or not.

For more details, visit

<https://www.anritsu.com/support/export-procedures>.


When you dispose of the products or manuals subject to export control, they must be physically destroyed or shredded so as not to be unlawfully used for military purpose.

China RoHS

产品中有害物质的名称及含量

部件名称	有害物质					
	铅 (Pb)	汞 (Hg)	镉 (Cd)	六价铬 [Cr(VI)]	多溴联苯 (PBB)	多溴二苯醚 (PBDE)
印刷线路板 (PCA)	×	○	×	×	○	○
机壳、支架 (Chassis)	×	○	×	×	○	○
电缆、风扇、连接 器等 (Appended goods)	×	○	×	×	○	○
<p>本表格依据 SJ/T 11364 的规定编制。</p> <p>○：表示该有害物质在该部件所有均质材料中的含量均在 GB/T 26572 规定的限量要求以下。</p> <p>×：表示该有害物质至少在该部件的某一均质材料中的含量超出 GB/T 26572 规定的限量要求。</p>						

环保使用期限



这个标记是根据「电器电子产品有害物质限制使用管理办法」以及 SJ/T 11364「电子电气产品有害物质限制使用标识要求」的规定，适用于在中国销售的电基础上，从生产日起算的该年限内，不会因产品所含有害物质的泄漏或突发性变异，而对环境污染，人身及财产产生深刻地影响。

About This Manual

This operation manual explains the configuration, connection, and operation of the G0430A PCIe5 Re-Driver Set.

Table of Contents

For Safety	iii
About This Manual.....	I
Chapter 1 Configuration of PCIe5 Re-Driver Set	1
Chapter 2 Connection Procedure.....	3
2.1 Installation.....	3
2.2 Setup.....	4
Chapter 3 Installing Software and Operation ..	6
3.1 Preparation	6
3.2 How to Optimize Return Path	9
Appendix A Channel Control Values of Preset Files	A-1

Chapter 1 Configuration of PCIe5 Re-Driver Set

The G0430A PCIe5 Re-Driver Set (hereafter G0430A) is an equalizer for 32 Gbaud NRZ signal. With G0430A for channel loss compensation, the MP1900A Signal Quality Analyzer-R can perform tests according to the PCIe 5.0 standard.



CAUTION

- When signals are input to this modules, avoid excessive voltage beyond the rating. Otherwise, the circuit may be damaged.
 - When output is used at the 50 Ω GND terminator, never feed any current or input signals to the output.
 - As a countermeasure against static electricity, ground other devices to be connected (including experimental circuits) with ground wires before connecting the I/O connector.
 - The outer conductor and core of the coaxial cable may become charged as a capacitor. Use any metal to discharge the outer conductor and core before use.
 - To protect this modules from electrostatic discharge failure, a conductive sheet should be placed onto the workbench, and the operator should wear an electrostatic discharge wrist strap. Always ground the wrist strap to the workbench antistatic mat or the frame ground of this modules.
-

The G0430A consists of a printed circuit board, cables, software, adapters, screws, and posts.

Refer to the following table for the G0430A configuration.

Table 1-1 G0430A Configuration

No.	Name	Q'ty	Remarks
①	MAEQ-39904B EVM board	1	Linear Equalizer EVM board
②	Mini USB cable	1	Cable
③	USB flash drive	1	The following files are stored. <ul style="list-style-type: none">• GUI software• Operation manual• Preset files• Test report
④	2.92mm Carlisle cable	2	Cable
⑤	K220B	2	Precision Adapter DC to 40 GHz, 50 Ω
⑥	DC cable	1	A pair of black and red cords
⑦	GND Connection Cable	1	Cable
⑧	ASB-316.5E	7	Posts
⑨	3NPS6Ni+SW+WBS	7	Screws
⑩	+3.3V label	1	For MAEQ-39904B EVM board Red Terminal

To use G0430A, the following required components should be prepared by the customer.

Table 1-2 Required Components

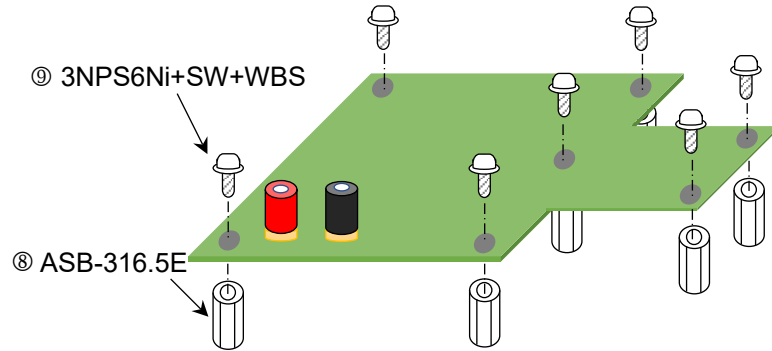
Model	Name	Q'ty	Remarks
J1728A	Electrical Length Specified Coaxial Cable (0.4m, K Connector)	2	J1728A or equivalent
N/A	DC Power Supply	1	Single power supply * (+3.3 V, 1.5 A)

*: LeCroy T3PS16081P has been confirmed to work with G0430A.

Chapter 2 Connection Procedure

2.1 Installation

Support MAEQ-39904B EVM board with screws and posts.



Note: Do not disassemble Main board and Controller.

Figure 2.1-1 Installing Posts

Place the MAEQ-39904B EVM board on a horizontal and level surface. Stick the +3.3V label near the red terminal.

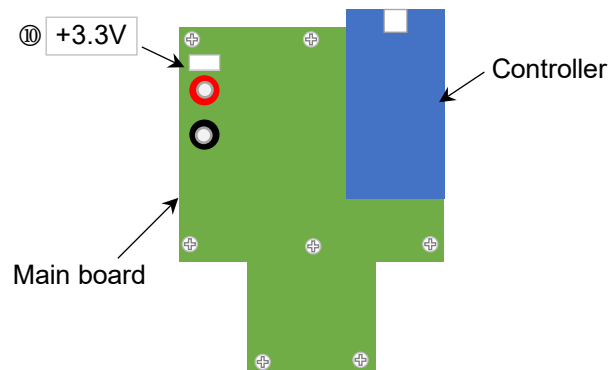


Figure 2.1-2 Label Position

2.2 Setup



CAUTION

Never feed a voltage of more than +3.3 V for MAEQ-39904B EVM board. Doing so may cause damage to it.

1. Turn on the MP1900A. Check that the DUT is turned OFF.
 2. Set the DC power supply as below.
DC voltage: +3.3 V
Current Limit: 1.5 A
Output: OFF
 3. Connect the cables (refer to Figure 2.2-1).
GND Connection Cable (㉔):
Connect MP1900A and the MAEQ-39904B EVM board.
2.92mm Carlisle cable (㉕):
Attach to the MAEQ-39904B EVM board.
Mini USB cable (㉖):
Connect MP1900A or PC and the MAEQ-39904B EVM board.
K220B (㉗):
Connect MAEQ-39904B Ch1 output to Ch2 input with two K220Bs.
- Note:**
Unused channels (Ch0 and Ch3) do not need to be terminated.
4. Connect the DC power supply to MAEQ-39904B EVM board with the DC cable (㉘).
 5. Connect the DUT, MAEQ-39904B EVM board, and the ED of MP1900A referring Figure 2.2-1 “Cable Connection”.
 6. Turn on the output of DC power supply.
Typical current is 260 mA.

When powering down, perform the procedure in reverse.

Refer to the following figure for connecting each part.

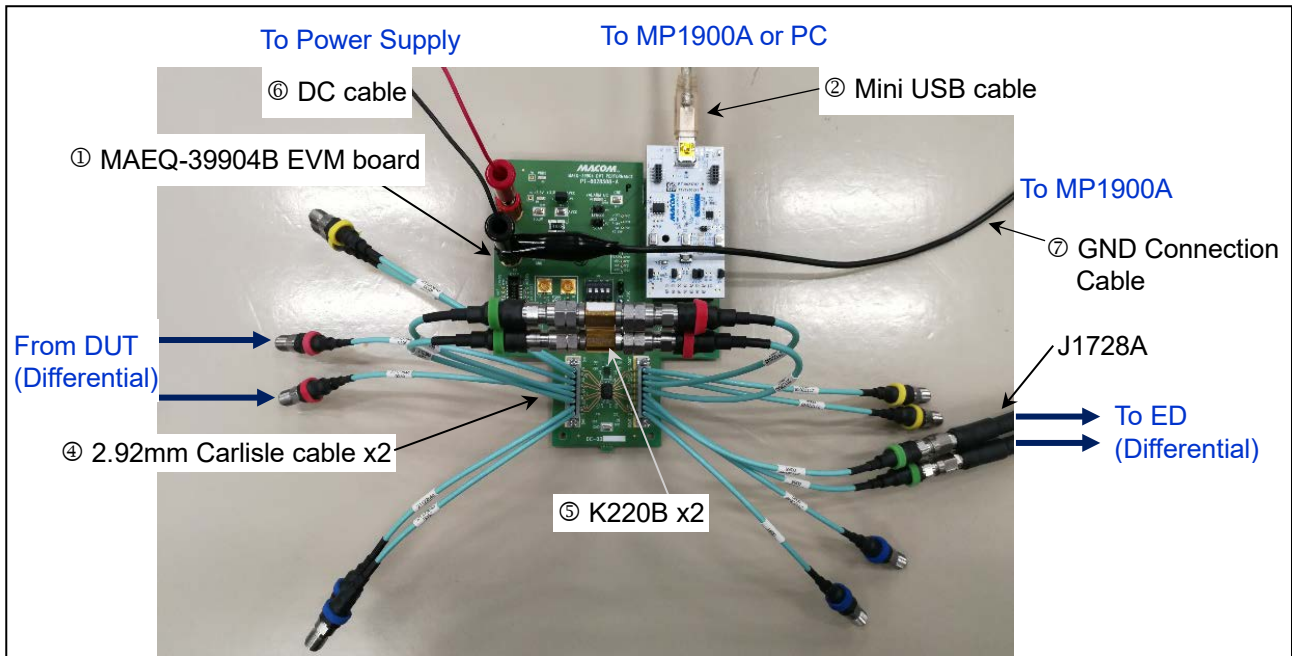


Figure 2.2-1 Cable Connection

CAUTION

To prevent a short circuit, be careful not to allow the 2.92mm Carlisle cables and their end connectors to contact the surface of the MAEQ-39904B EVM board or the DUT.

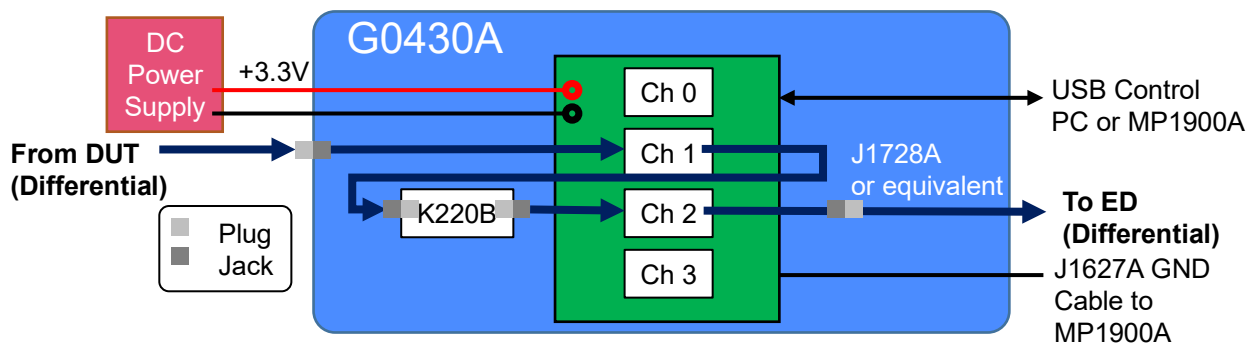


Figure 2.2-2 Connection Diagram

Chapter 3 Installing Software and Operation

3.1 Preparation

Prepare the G0430A for operation according to the following steps.

1. Install the GUI software on the host PC or MP1900A.

Note:

The GUI Software works only on Windows 10.

If the OS on the MP1900A is Windows 7, install the GUI Software on an external PC installed with Windows 10.

The GUI software is stored on the USB flash drive.

Folder name: \EVM Kit Zip File\EVM Setup vx.x.x
(x.x.x represents the software version)

Executable file: setup.exe

2. Verify jumpers are present in the positions shown in Figure 3.1-1 and Table 3.1-1.

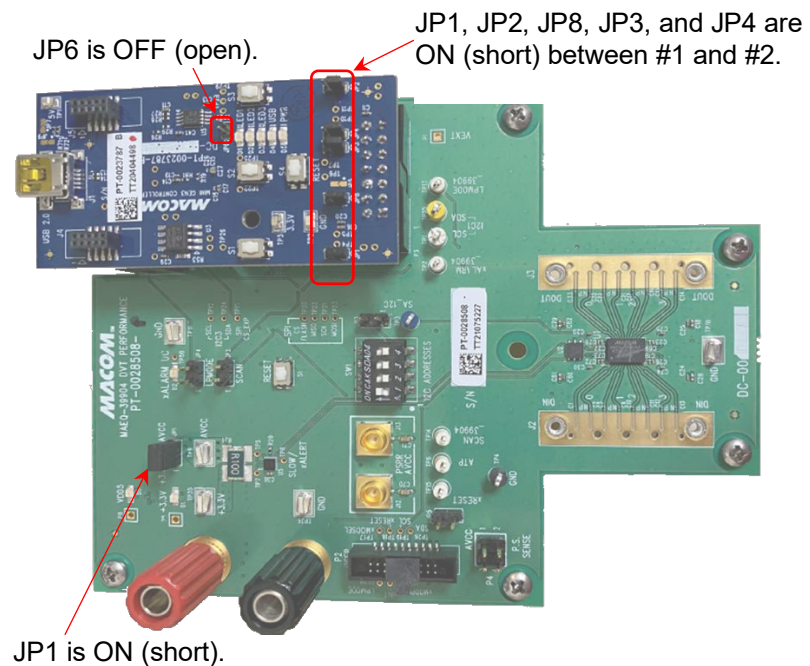


Figure 3.1-1 EVM Jumper Settings

Table 3.1-1 EVM Jumper Settings

Board	Jumper	Setting	Description
Main Board (Green)	JP1	ON	3.3 V to AVCC
Controller (Blue)	JP1, JP2, JP8, JP3, JP4	1-2, ON	Micro-controller programming setup
	JP6	OFF	Do not use.

3. Connect the device under the test (hereafter, DUT) outputs to the MAEQ-39904B Ch1 inputs with the Carlisle connector cables.
4. Connect between the MAEQ-39904B Ch2 outputs and the MP1900A ED inputs by using 2.92mm Carlisle cables.
5. Make sure the necessary hardware connections for the G0430A are in place, and launch the User Control software by going to Start > All Programs > MACOM Technology Solutions.
6. Make sure the software is active, click **Connect**.
The device will be recognized and displayed in the upper-right corner of the window.

When the **Bad COM Port Settings** dialog box is displayed, open Device Manager, expand **Ports (COM & LPT)**, and check the number displayed after USB Serial Device.

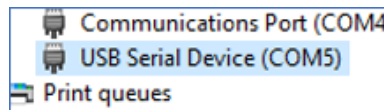


Figure 3.1-2 Port Number Indication of EVM board

Change the Port setting for software from **Auto** to the USB Serial Device number (for example, **COM5**).

Also, check that I²C Display is set to **7-Bit**.

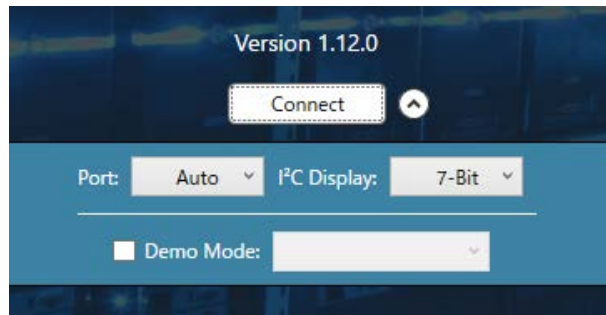


Figure 3.1-3 Connection Settings

7. On the right side of the **Channel Control** tab, click **Reset with No OTP Download** to reset the device.

The **Channel Control** tab helps you control the settings for each of the four channels individually.

The high frequency boost can be controlled by using the slide bar or by inputting a decimal number between 1 to 127 (① in Figure 3.1-4). Channel control also allows control over the settings like, low frequency boost, bias control, and disabling the channel (② and ③ in Figure 3.1-4).

On the individual channel tab, each of the four channels can be configured differently.

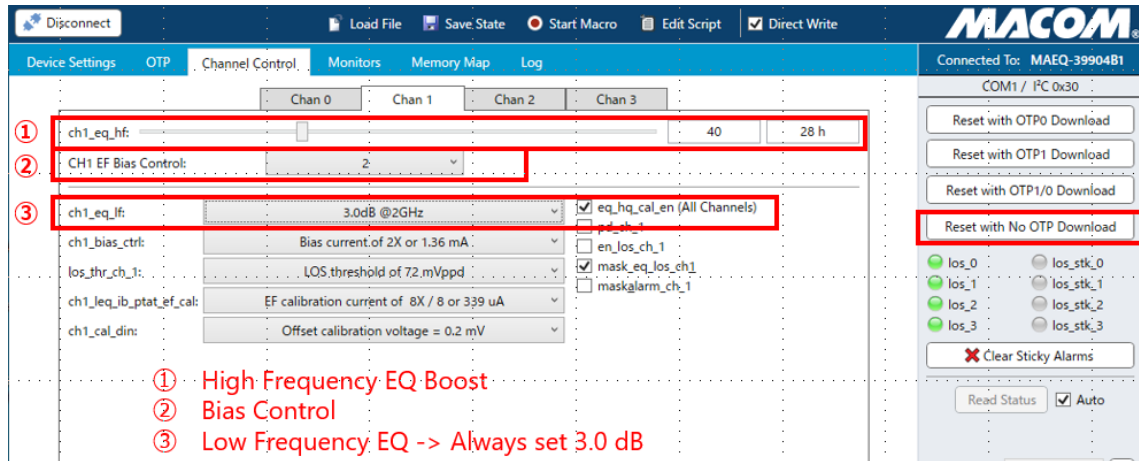


Figure 3.1-4 Channel Control tab

3.2 How to Optimize Return Path

For Receiver LEQ Test with PCIe Gen5 (32GT/s), it is important to optimize Return Path (DUT Tx to BERT ED). The procedure is shown below.

Requirements for using the G0430A

When testing the System, connect the G0430A between DUT Tx and ED. Refer to Chapter 2 “Connection Procedure” for how to set up the G0430A. Though the G0430A is not required for AIC Test, it is the same as the method of optimizing Return Path for System / AIC test.



CAUTION

The maximum recommended input amplitude for the IC mounted on the MAEQ-39940B EVM board is 1.0 Vp-p (differential).

The G0430A is used with Ch1 and Ch2 of the IC on the MAEQ-39904B EVM board connected in series. Therefore, if the input amplitude for Ch1 exceeds 800 mVp-p (differential), there is a risk that the input amplitude for Ch2 in the subsequent stage could exceed 1 Vp-p (differential).

By using an oscilloscope with a bandwidth of at least 50 GHz, make sure that the input waveform amplitude for the MAEQ-39904B EVM board is less than or equal to 800 mVp-p (differential).

Preparation of preset files

To optimize the Return Path, you are required to prepare preset files for MAEQ-39904B.

1. Copy the zip file from the USB flash drive to the PC or MP1900A.
 \Macom_MAEQ-39904_EQ_Preset.zip
2. Extract the zip file, and then make sure that the following 21 files are in the directory you specify.
 MAEQ-39904_EQ_P0.txt
 MAEQ-39904_EQ_P1.txt
 :
 MAEQ-39904_EQ_P19.txt
 MAEQ-39904_EQ_P20.txt
3. Click the **Channel Control** tab, click **Load File** shown in Figure 3.2-1, and select a preset file.

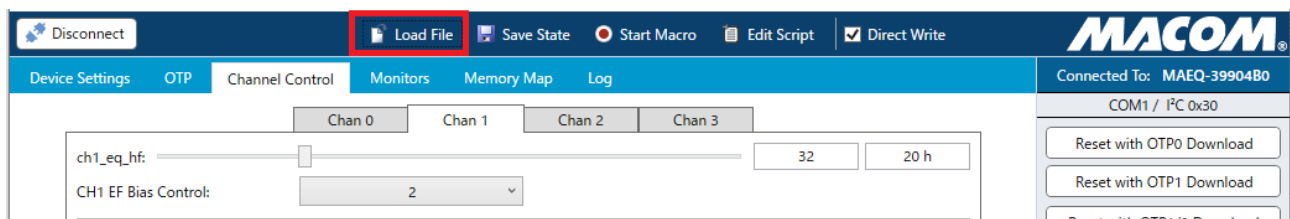


Figure 3.2-1 Loading a Preset File

Optimization procedure

1. Refer to the “Receiver Link Equalization Test” section in the *MX183000A High-Speed Serial Data Test Software Operation Manual* and set up the test configuration according to the figure below. Turn on the DUT.
2. Start MX183000A, set Specification to **5.0(32.0 GT/s)**, and then turn off all the stresses below.
 - SJ
 - RJ
 - DM
 - CM

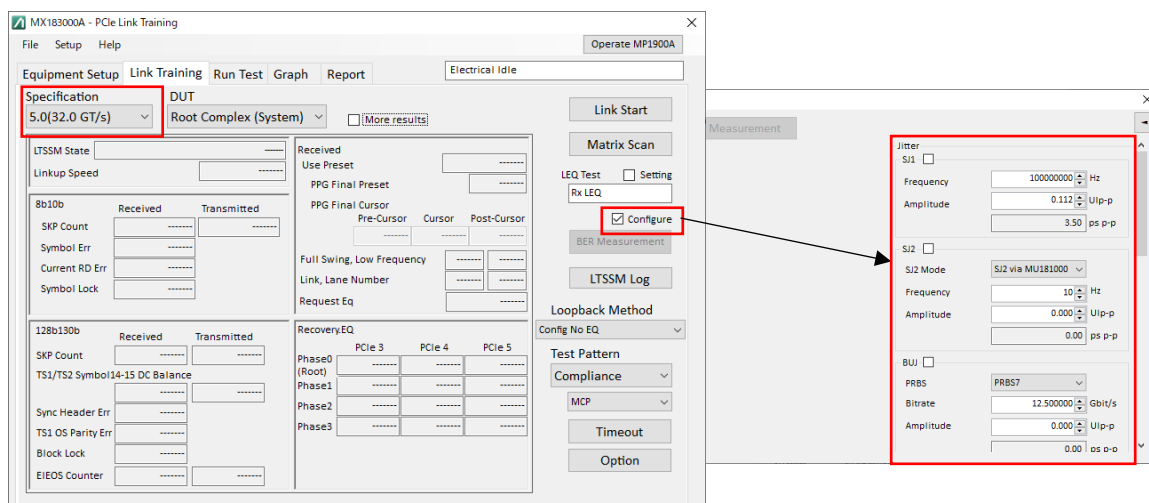


Figure 3.2-2 Configuration of MX183000A Link Training

3. In the MX183000A main screen, select the **Setting** check box for LEQ Test, and follow the steps below:
 - 3a. Set PPG Starting Preset to **P5**.
 - 3b. Set DUT Initial Preset (Preset Hint Tx) to **P9**.
 - 3c. Set DUT Target Preset (Change Preset) to **P9**.
 - 3d. Click **Apply**.
 - 3e. Click **Option**, and then on the **PPG/ED** tab of the **Option** dialog box, set CTLE Gain to 0.0 dB.

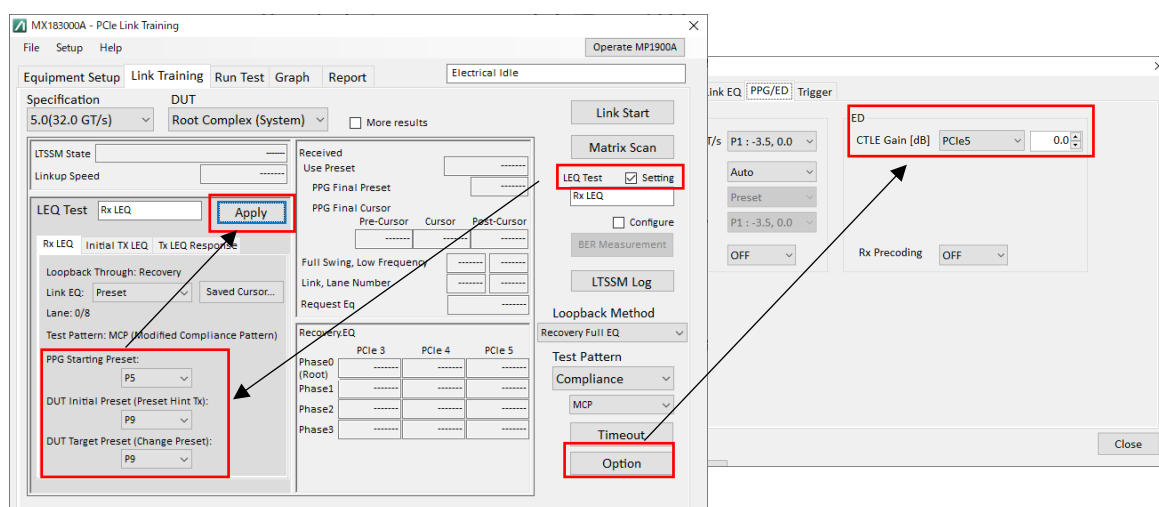
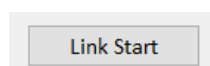
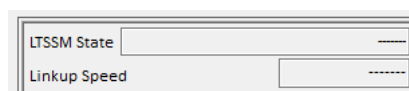


Figure 3.2-3 LEQ Test Setting of MX183000A Link Training

4. Turn the G0430A on, load channel control parameters shown in Table A-1 from a preset file named MAEQ-39904_EQ_P0.txt first as shown in Figure 3.2-1.
5. Click **Link Start**.

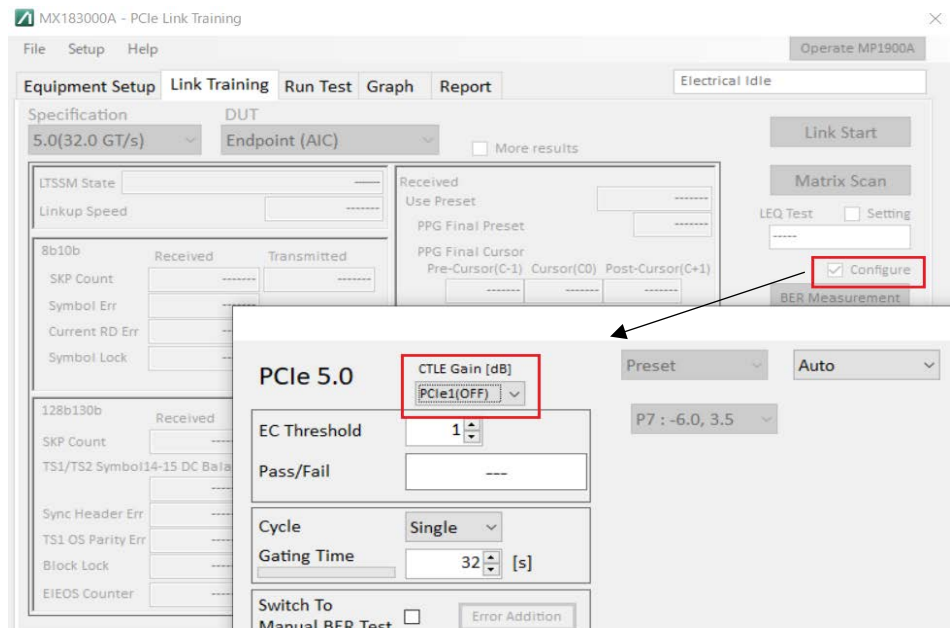


6. Establish Loopback.



- 6a. If Linkup Speed is not 32.0 Gbps and the LTSSM State is not Loopback.Active.Lead, increase the preset file number of the re-driver, for example at intervals of four, EQ_P0 -> EQ_P4 -> ... -> EQ_P20. Each time the preset file number set to the re-driver changes, make sure that the LTSSM is in the Loopback state displayed.
- 6b. If Loopback cannot be established despite the preset file number is set to EQ_P20, set the Preset values in steps 3b and

- 3c to P8, set the preset file number of the re-driver to EQ_P0, and then retry to check the Loopback state according to step 6a.
- 6c. If Loopback cannot be established even with Preset **P8**, redo step 6b with the Preset values set to **P7, P6, ... P0**.
- 6d. If Loopback cannot be established even with Preset **P0** in step 6c, set CTLE Gain to **OFF** (step 3e.) and redo step 3 to 6c.



- 6e. If Loopback is established according to steps 6a to 6d, check the Preset values of MX183000A and the preset file number of the re-driver.
- 6f. If Loopback cannot be established up to step 6e, remove ISI from the measuring system and retry steps 6a to 6e.

If Loopback cannot be established by the steps above, the measurement environment may be incorrect (cable connection error, etc.) or there may be a problem with the DUT, so review the measurement environment again.

7. BER optimization

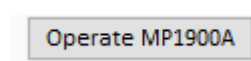
Perform Link Training with the Preset values, CTLE Gain setting, and the preset file number of the re-driver specified in step 6 to measure BER.

7a. Optimize EQ to find the setting that gives the optimal BER.

7b. Set the EQ confirmed in step 6.

7c. Run Auto Search.

Click **Operate MP1900A** to switch over to MP1900A GUI.



Click the **Auto Search** button.

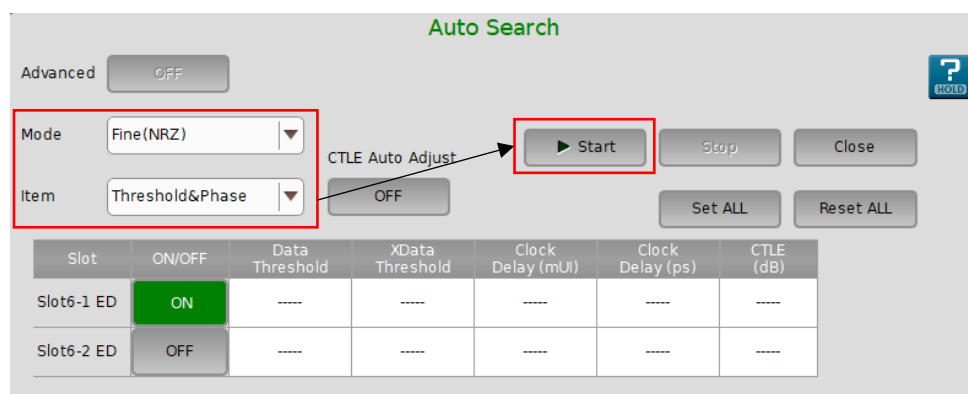


Set as below and click **Start**:

Mode: **Fine(NRZ)**

Item: **Threshold&Phase**

CTLE Auto Adjust: **OFF** (if CTLE Gain setting is **ON**)



7d. Wait until Auto Search is completed, and then check BER.

7e. Increase the preset file number of the re-driver by 1 or 2 at a time, and then check the BER again. If the optimal preset BER numbers are detected in succession, repeat until you find the preset number at which the BER deteriorates. If an error-free condition is achieved with multiple preset file numbers, use the preset file with the middle number of a series of preset file numbers as the optimum setting.

7f. Click the **Auto Search** button in step 7c and check the BER again.

When an error-free condition is achieved with the steps so far, optimization of Return Path is complete successfully. Then, go to step 8.

Otherwise, follow steps 7g to 7j.

7g. CTLE adjustment

Adjust the CTLE Gain value or set CTLE Gain to **OFF** to minimize Total BER.

The screenshot shows the 'PCIe 5.0' configuration window. The 'CTLE Gain [dB]' dropdown is set to 'PCle5' and the value is '0.0'. The 'Preset' dropdown is set to 'Auto'. The 'BER Measurement' button is visible. The 'EC Threshold' is set to '1'. The 'Pass/Fail' status is 'PASS'. The 'Cycle' is set to 'Single' and 'Gating Time' is '125 [s]'. The 'Switch To Manual BER Test' checkbox is unchecked. The 'Total BER' is '0.0000E-11', 'Total Error Count' is '0', 'Total Bits' is '8.0000E+11', and 'Current BER' is '4.0000E-02'. The 'Sync Loss' and 'Clock Loss' checkboxes are both checked. On the right, the 'DM' section shows 'Frequency' at '2.00 GHz' and 'Amplitude' at '4 mVp-p'. The 'ED' section shows 'Delay' for PCle1 through PCle5, all set to '0 mUI'. The 'Option' section shows 'CDR Tune' and 'Reset' buttons. The 'PPG (Data 2, Aggressor)' section shows 'Delay' set to '0 mUI'.

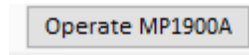
7h. Run CDR Tune

Click **CDR-Tune** to check BER.

This screenshot is identical to the previous one, but the 'CDR Tune' button in the 'Option' section is highlighted with a red box, indicating it should be clicked to run the CDR Tune process.

- 7i. Run Auto Search

Click **Operate MP1900A** to switch over to MP1900A GUI.



Click the **Auto Search** button.

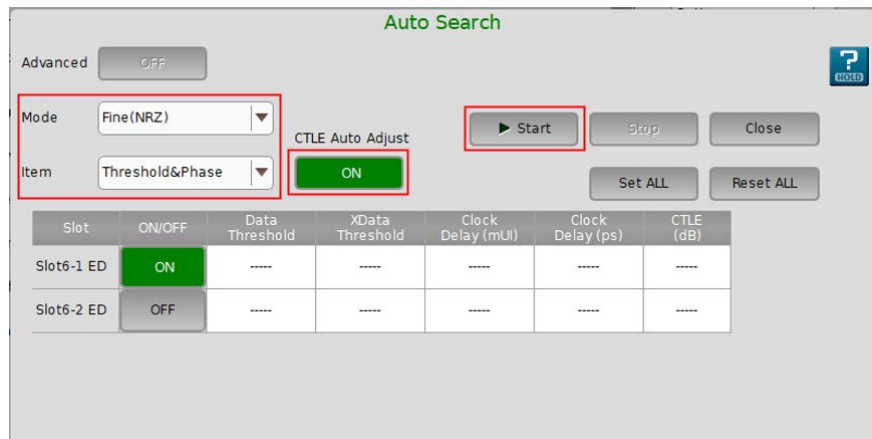


Set as below and click **Start**:

Mode: **Fine(NRZ)**

Item: **Threshold&Phase**

CTLE Auto Adjust: **ON** (if CTLE Gain setting is **ON**)

A screenshot of the "Auto Search" GUI. The title "Auto Search" is at the top center in green. On the left, there's an "Advanced" toggle set to "OFF". Below it, "Mode" is set to "Fine(NRZ)" and "Item" is set to "Threshold&Phase" in dropdown menus. To the right, "CTLE Auto Adjust" is set to "ON" in a green button. Further right is a "Start" button with a play icon, followed by "Stop" and "Close" buttons. Below these are "Set ALL" and "Reset ALL" buttons. At the bottom is a table with 7 columns: Slot, ON/OFF, Data Threshold, XData Threshold, Clock Delay (mUI), Clock Delay (ps), and CTLE (dB). The table has two rows: "Slot6-1 ED" with "ON" in a green button, and "Slot6-2 ED" with "OFF" in a gray button. All threshold and delay values are "----".

Slot	ON/OFF	Data Threshold	XData Threshold	Clock Delay (mUI)	Clock Delay (ps)	CTLE (dB)
Slot6-1 ED	ON	----	----	----	----	----
Slot6-2 ED	OFF	----	----	----	----	----

- 7j. Wait until Auto Search is completed, and then check BER.

With the steps so far, if an error is still detected, it is determined that there is an error in the Rx of the DUT.

8. Confirm the setting parameters for optimization.

These parameters for optimization are determined according to the procedure above (steps 1-7), as shown below:

- Preset setting confirmed in step 6.
DUT Initial Preset (Preset Hint Tx)
DUT Target Preset (Change Preset)

DUT Initial Preset (Preset Hint Tx):

DUT Target Preset (Change Preset):

- Threshold, Phase, and G0430A settings confirmed in step 7.
CTLE setting is effective only when step 7i is followed.

Slot	ON/OFF	Data Threshold	XData Threshold	Clock Delay (mUI)	Clock Delay (ps)	CTLE (dB)
Slot6-1 ED	ON	0 mV	0 mV	200 mUI	48.96 ps	-1.9 dB

Device Settings OTP Channel Control Monitors Memory Map Log

Chan 0 Chan 1 Chan 2 Chan 3

ch1_eq_hf:

CH1 EF Bias Control:

ch1_eq_lf: ☒ eq_hq_cal_en (All Channels)

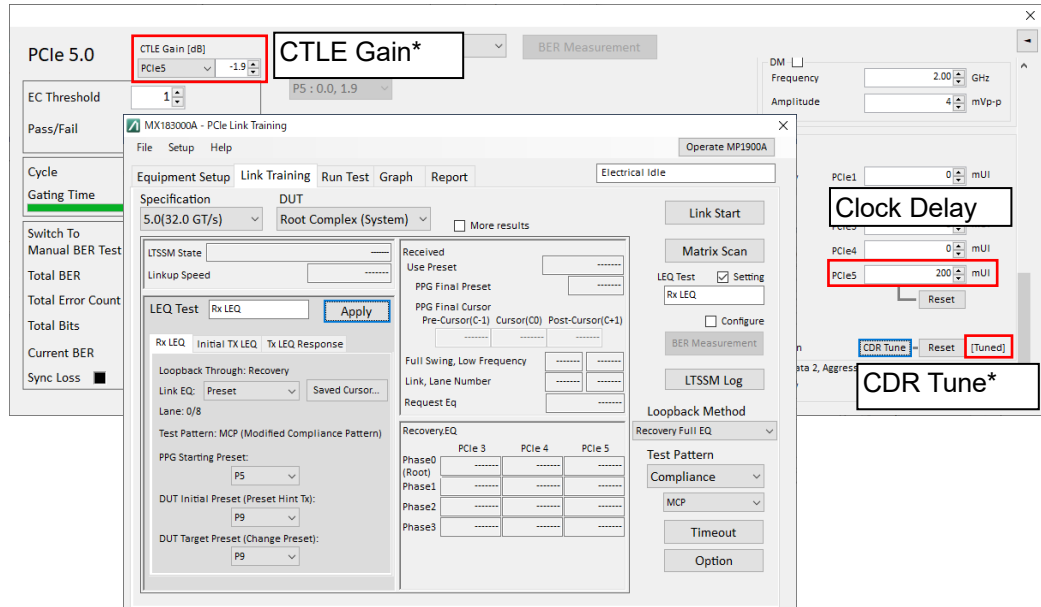
ch1_bias_ctrl: ☐ pd_ch_1

los_thr_ch_1: ☐ en_los_ch_1

ch1_leq_ib_ptat_ef_cal: ☒ mask_eq_los_ch1

ch1_cal_din: ☐ maskalarm_ch_1

Now, the Return Path is successfully optimized.



* Only when steps 7g to 7j are followed

Figure 3.2-4 Setting Example of Optimization of Return Path

Appendix A Recommended Channel Control Values

The following table shows recommended combinations of values for Figure 3.1-4 “Channel Control tab”.

Table A-1 Recommended Channel Control Values

Set No.	ch1_eq_hf	CH1 EQ Bias Control	ch1_eq_lf (dB)	ch2_eq_hf	CH2 EQ Bias Control	ch2_eq_lf (dB)
0	28	2	3.0	7F	3	3.0
1	20	2	3.0	7F	3	3.0
2	18	2	3.0	7F	3	3.0
3	10	1	3.0	7F	3	3.0
4	8	1	3.0	7F	3	3.0
5	1	1	3.0	7F	3	3.0
6	1	1	3.0	78	3	3.0
7	1	1	3.0	70	3	3.0
8	1	1	3.0	68	3	3.0
9	1	1	3.0	60	3	3.0
10	1	1	3.0	58	3	3.0
11	1	1	3.0	50	2	3.0
12	1	1	3.0	48	2	3.0
13	1	1	3.0	40	2	3.0
14	1	1	3.0	38	2	3.0
15	1	1	3.0	30	2	3.0
16	1	1	3.0	28	2	3.0
17	1	1	3.0	20	2	3.0
18	1	1	3.0	18	2	3.0
19	1	1	3.0	10	1	3.0
20	1	1	3.0	1	1	3.0

