

Precaution of Using AC Adapter

This document applies to AC adapters for the MT1040A Network Master Pro.

For AC adapters purchased in 2020 or earlier, see page 2.

For AC adapters without MT1040A-006 purchased in 2021 or later, see page 3.

For AC adapters with MT1040A-006 purchased in 2021 or later, see page 4.

Anritsu Corporation

AC Adapter Purchased in 2020 or earlier

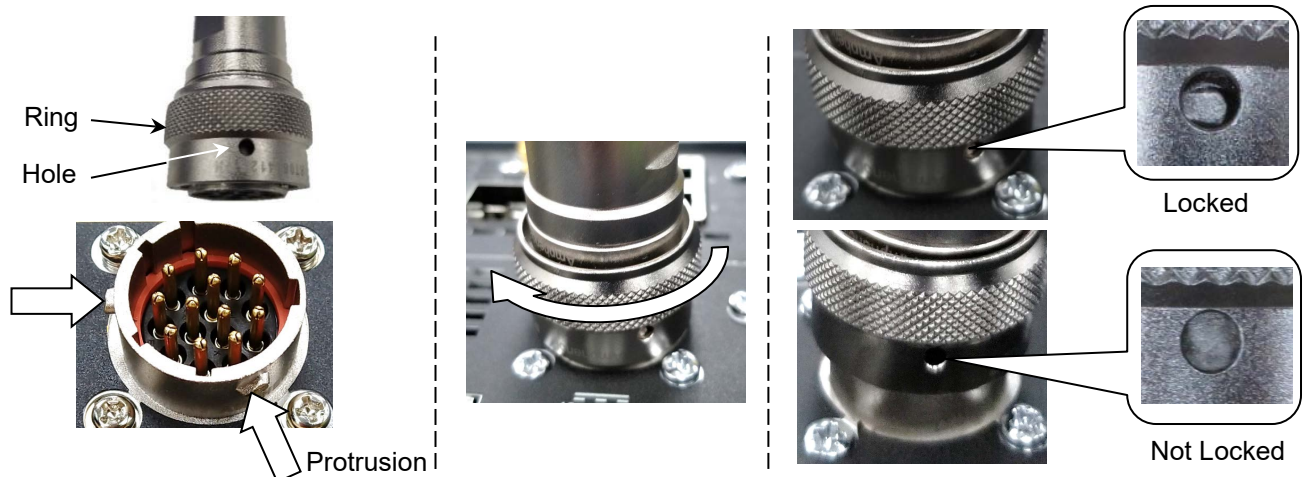
Before Connecting AC Adapter

Check the DC plug of the AC adapter and the MT1040A power connector for dust.
Dust buildup on connector pins may cause a contact failure.



How to Connect AC Adapter

1. With the guides on the DC plug aligned to the grooves on the power connector, insert the DC plug into the power connector.
2. Turn the DC plug ring in the direction of the arrow until the DC plug is locked.
Ring of the DC plug has holes and the power connector has protrusions on outer surface. The DC plug locks to the power connector when the protrusions on the power connector fit into the holes on the DC plug ring.



The DC plug is not locked unless the protrusions fit into the holes.
The gap between the ring and the panel becomes wider than when it is locked.

3. Connect the AC plug of the AC adapter to the wall outlet.



- Unless the DC plug is locked, it may come off when the MT1040A is used.
- If the DC plug of the AC adapter is connected with voltage applied to it, malfunction or damage may occur to the MT1040A.

Disconnecting AC Adapter

Before disconnecting the AC adapter, pull out the AC plug, and then disconnect the DC plug.



When batteries are not installed in the MT1040A, turn it off before disconnecting the AC adapter.

AC Adapter Purchased in 2021 or later (Without MT1040A-006)

Before Connecting AC Adapter

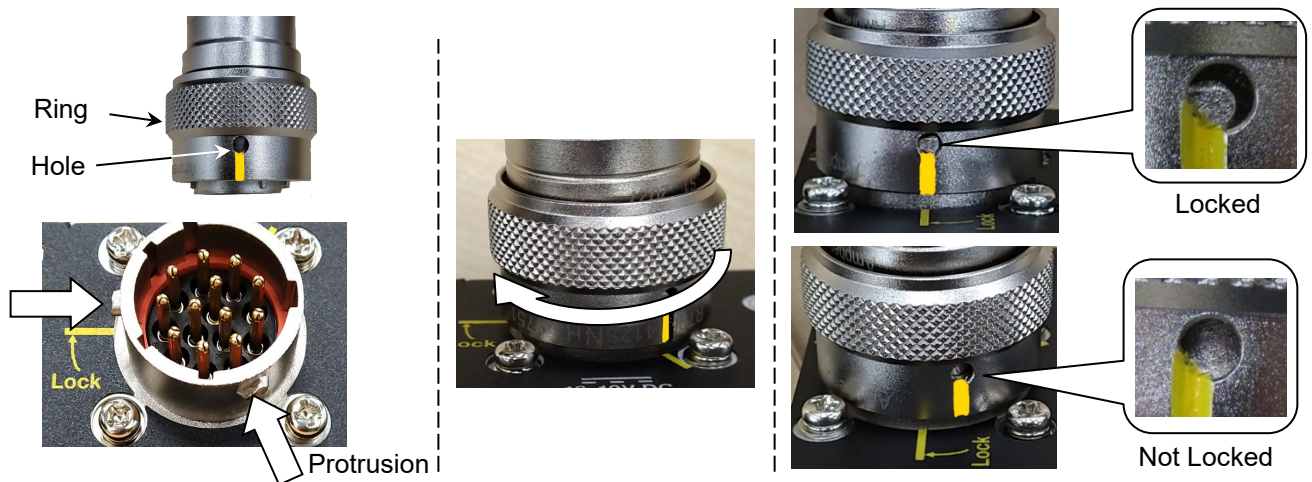
Check the DC plug of the AC adapter and the MT1040A power connector for dust.
Dust buildup on connector pins may cause a contact failure.



How to Connect AC Adapter

1. With the guides on the DC plug aligned to the grooves on the power connector, insert the DC plug into the power connector.
2. Turn the DC plug ring in the direction of the arrow until yellow markers on the DC plug and the connector panel are aligned.

Ring of the DC plug has holes and the power connector has protrusions on outer surface. The DC plug locks to the power connector when the protrusions on the power connector fit into the holes on the DC plug ring.



Check one of the yellow markers on the DC plug is aligned to the Lock marker on the connector panel.
The DC plug is not locked unless the protrusions fit into the holes.
The gap between the ring and the panel becomes wider than when it is locked.

3. Connect the AC plug of the AC adapter to the wall outlet.



- Unless the DC plug is locked, it may come off when the MT1040A is used.
- If the DC plug of the AC adapter is connected with voltage applied to it, malfunction or damage may occur to the MT1040A.

Disconnecting AC Adapter

Before disconnecting the AC adapter, pull out the AC plug, and then disconnect the DC plug.



When batteries are not installed in the MT1040A, turn it off before disconnecting the AC adapter.

AC Adapter Purchased in 2021 or later (With MT1040A-006)

Before Connecting AC Adapter

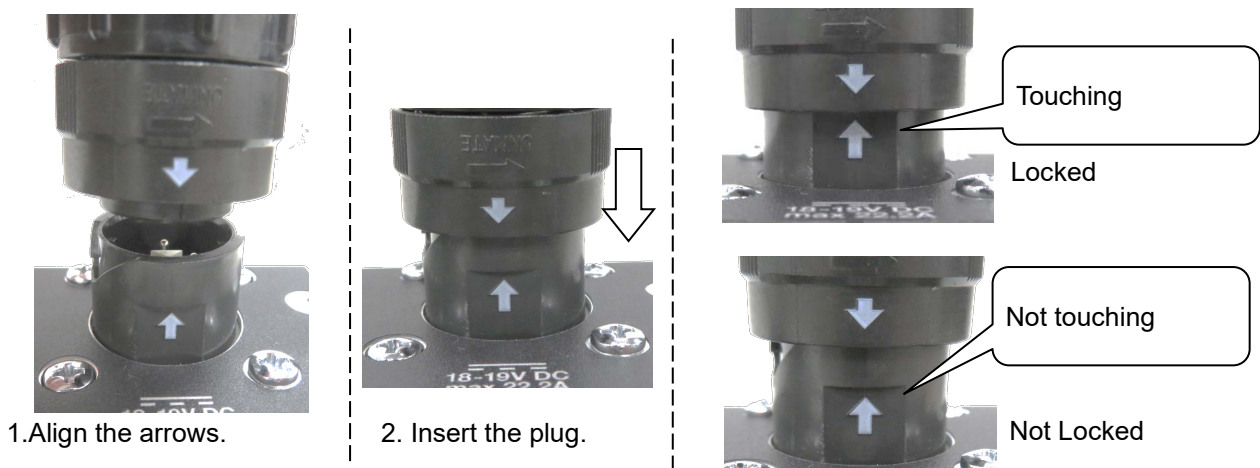
Check the DC plug of the AC adapter and the MT1040A power connector for dust.
Dust buildup on connector pins may cause a contact failure.



Connector of MT1040A-006 High Power Supply

How to Connect AC Adapter

- Align the arrow on the DC plug with the arrow on the power connector, and insert the DC plug straight into the power connector of the MT1040A.
The DC plug is locked, when it is inserted until the end surface of its retaining ring touches the edge of the square protrusion (arrow) on the power connector of the MT1040A.



- Connect the AC plug of the AC adapter to the wall outlet.
- For the G0419A AC Adapter (400W), turn on the switch of the adapter.


CAUTION

- Unless the DC plug is locked, it may come off when the MT1040A is used.
- If the DC plug of the AC adapter is connected with voltage applied to it, malfunction or damage may occur to the MT1040A.

Disconnecting AC Adapter

- For the G0419A AC Adapter (400W), turn off the switch of the adapter.
- Pull out the AC plug of the AC adapter.
- Rotate the retaining ring counterclockwise while pulling it upward, and unmate the DC plug.


CAUTION

When batteries are not installed in the MT1040A or two transport modules are installed to the MT1040A, turn it off before disconnecting the AC adapter.