

MD1260A upgrade manual (for v3.0 or later)

In this manual, the MD1260A setup procedure using an installer provided in MD1260A software/manual CD-ROM (Z1442A) or MD1260A upgrade software (MX126000A) is described.

It takes about 30 minutes to complete. The procedure consists of the following steps.

1. Exiting Selector
2. Copying installer
3. Installing application
4. Executing download
5. Setting network (1.0 → 2.0(or later) or 2.0(or later) → 1.0)
6. Setting Unit ID (1.0 → 2.0 or later)

The upgrade procedure differs depending on the current version. Confirm it in the following way.

When the following startup screen appears, it indicates the version used is 1.0.



When the following startup screen appears, it indicates the version used is 2.0 or later.



1. Exiting Selector

Start the mainframe, press the × button in the upper right of the selector screen of the application to quit the application.

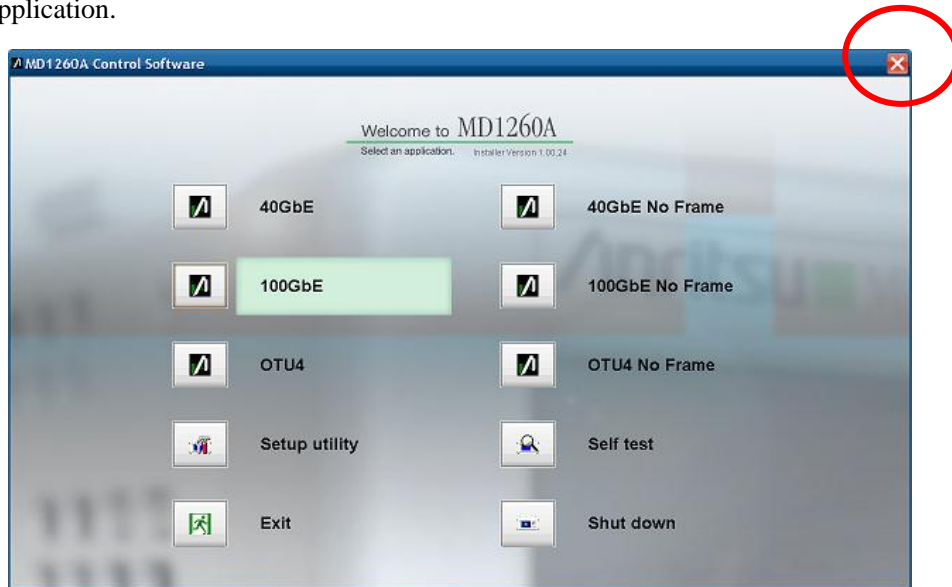


Figure 1-1 Version 1.0 Selector Screen

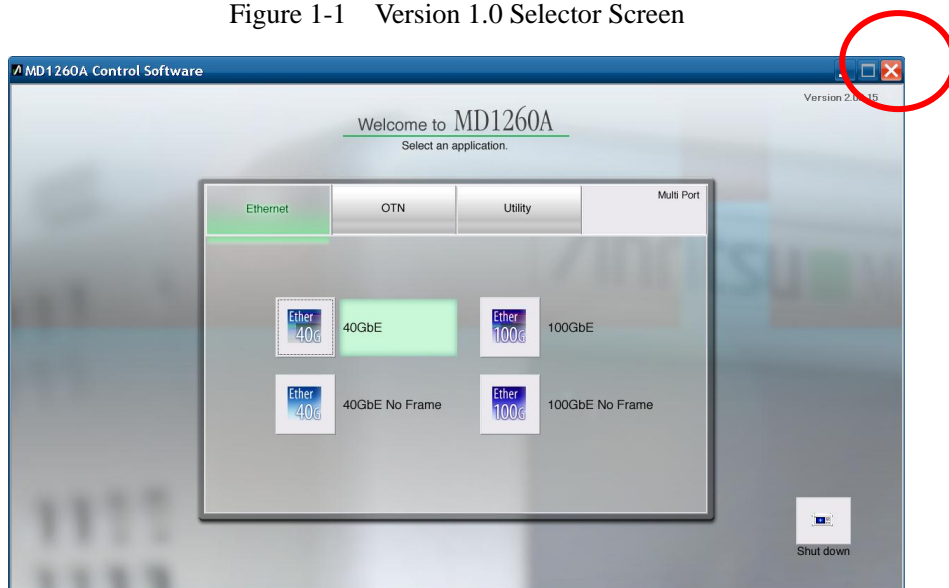


Figure 1-2 Version 2.0 or later Selector Screen

2. Copying installer

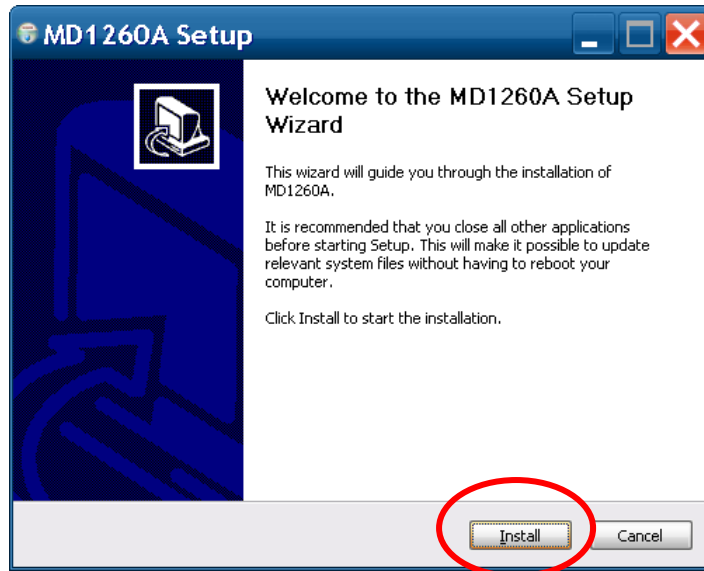
Copy the following file included in the CD-ROM or downloaded from the Web site to MD1260A via memory device such as USB memory.

MD1260A-vX.XX.XX.exe

- * Run the virus check beforehand, including the USB memory when you copy the file and data.

3. Installing application

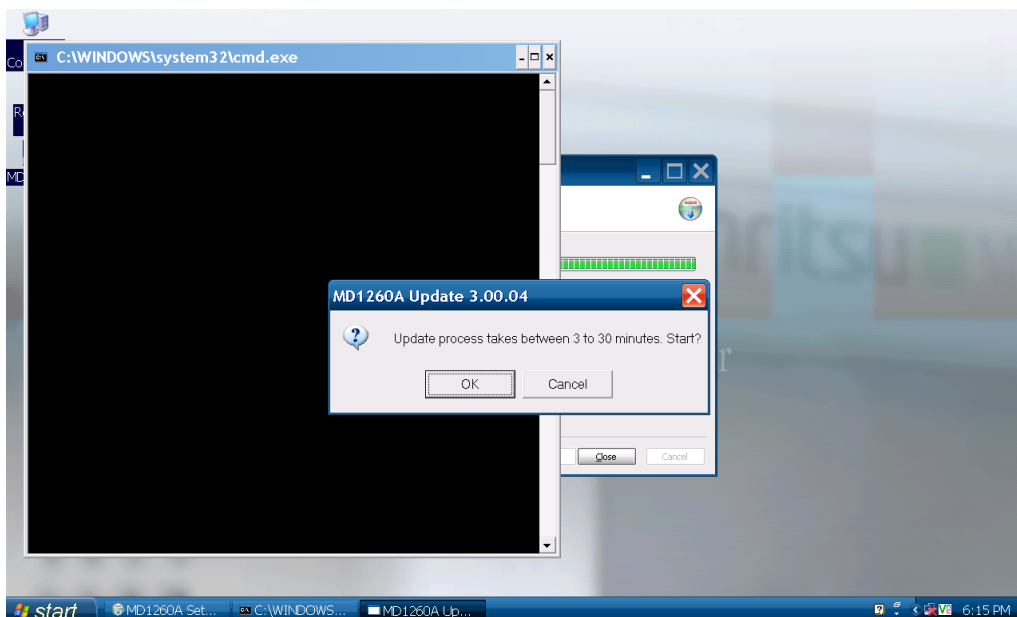
Double-click “MD1260A-vX.XX.XX.exe”.



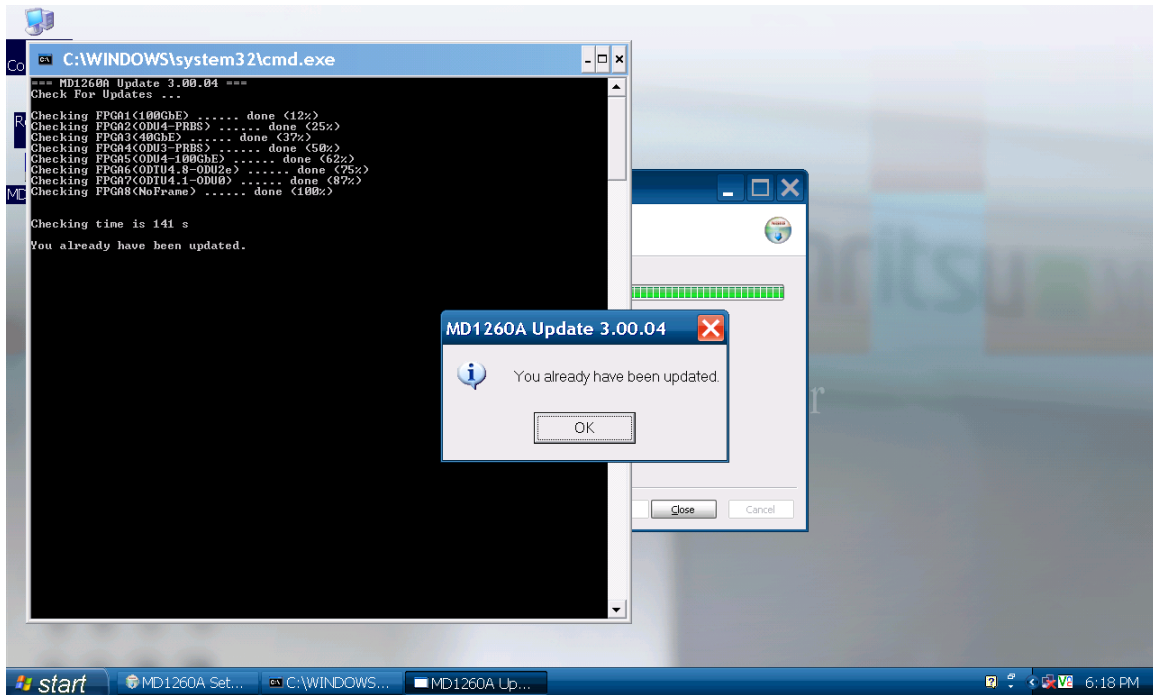
The following dialog will appear moments after **Install** is pressed. Press **OK**, the firmware and FPGA data download will start.

* Up to 30 minutes may take for this processing.

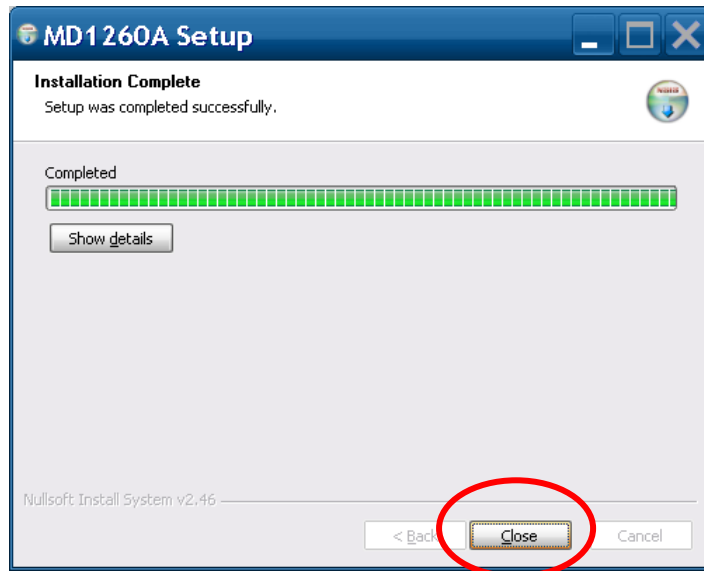
* When updating from Version 1.0, press **Cancel** here. After doing step 4 and 5, perform update by **Start > MD1260A > Update**.



Exit the download processing by pressing **OK** in the following dialog.



Exit the installation processing by pressing **Close** in the following dialog.



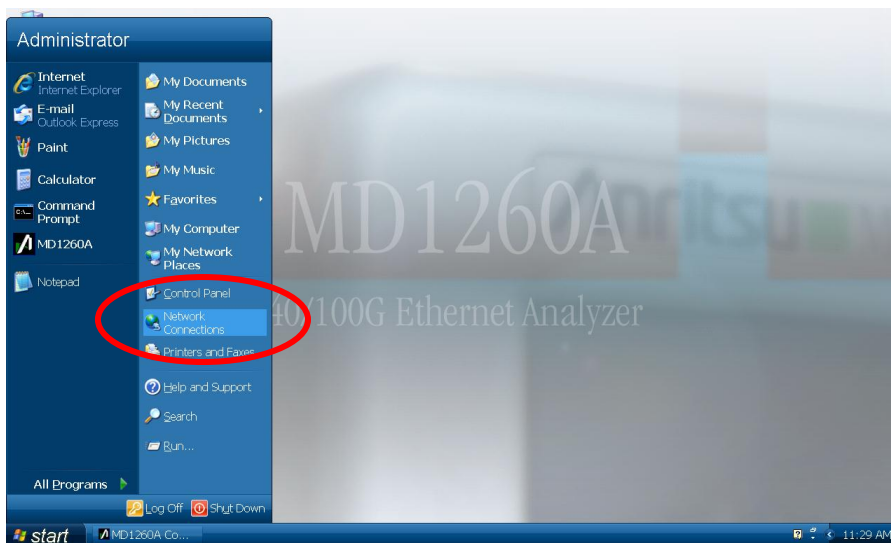
4. Setting network (1.0 → 2.0(or later) or 2.0(or later) → 1.0)

* This procedure is necessary only when upgrading from 1.0 to 2.0(or later), or downgrading from 2.0(or later) to 1.0.

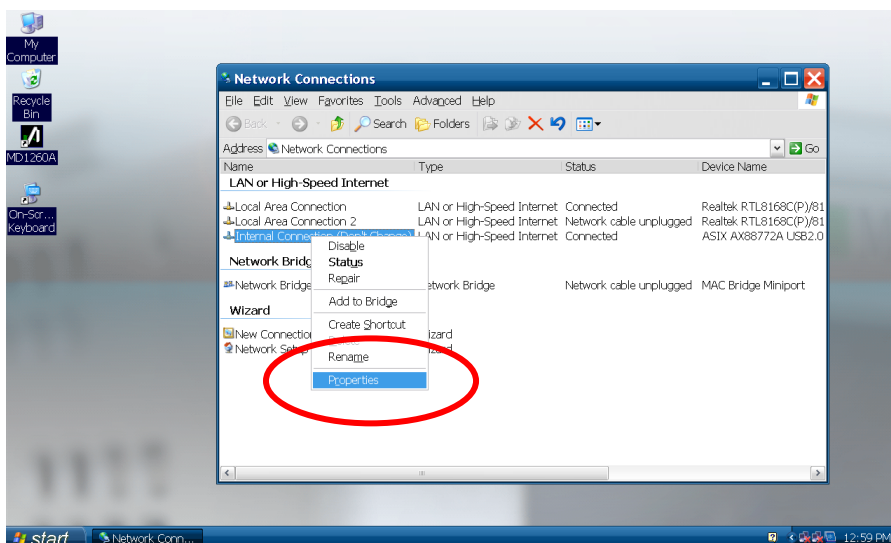
Power on the mainframe with nothing connected to the Ethernet connector of the mainframe.

Close an application. (→Procedure 1)

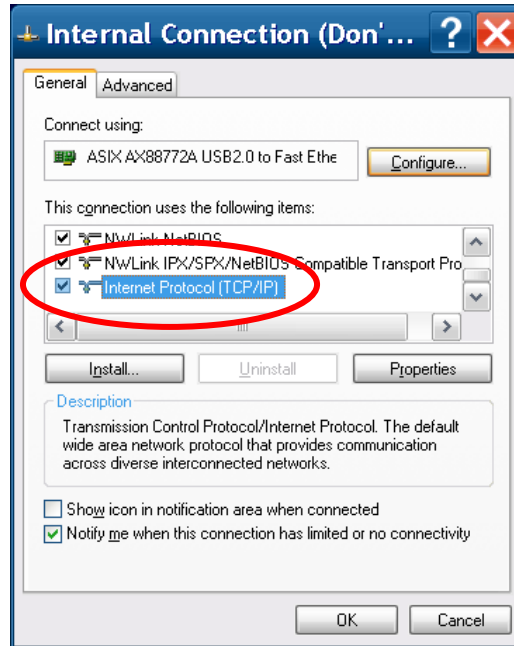
From Windows start menu, select **Start Menu > Network connections**.



Right-click **Internal Connection (Don't Change)** and select **Properties**.

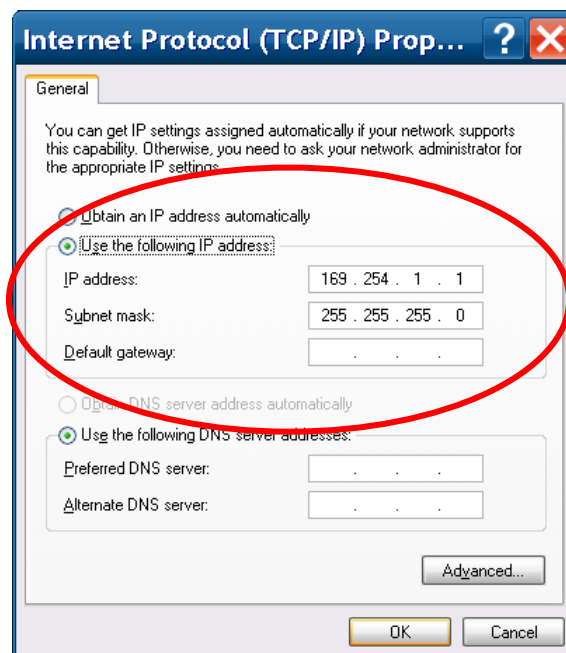


Select **Internal Protocol (TCP/IP) > Properties**.



Change the IP address according to the version at the installation destination, and press **OK**.

Version at installation destination	IP address after the change
1.0	192.168.1.1
2.0 or later	169.254.1.1

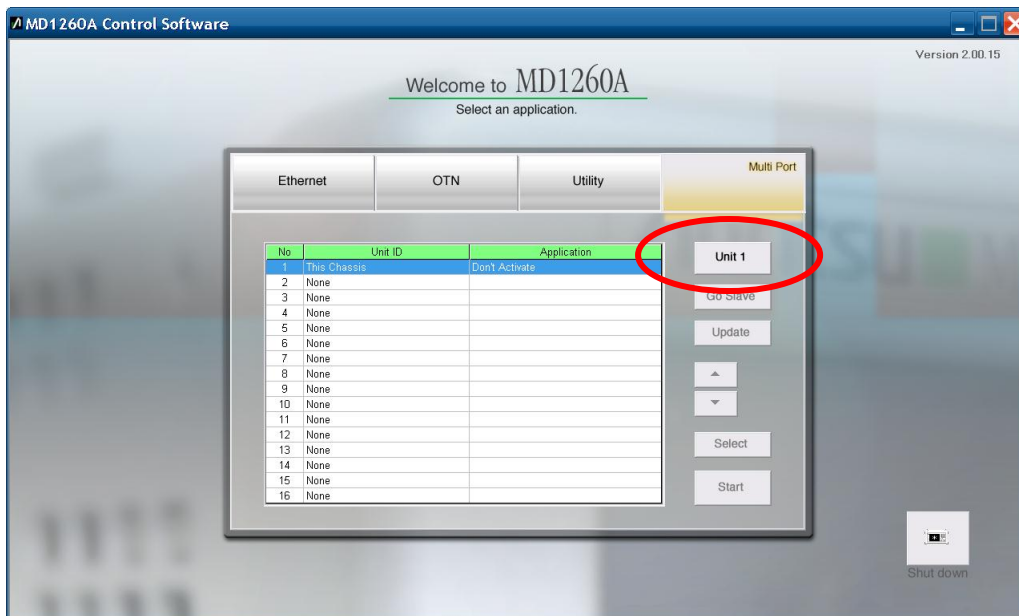


5. Setting Unit ID (1.0 → 2.0 or later)

- * This procedure is necessary only when upgrading from 1.0 to 2.0 or later.
- * Refer to *MD1260A 40/100G Ethernet Analyzer Operation Manual* for Unit ID.

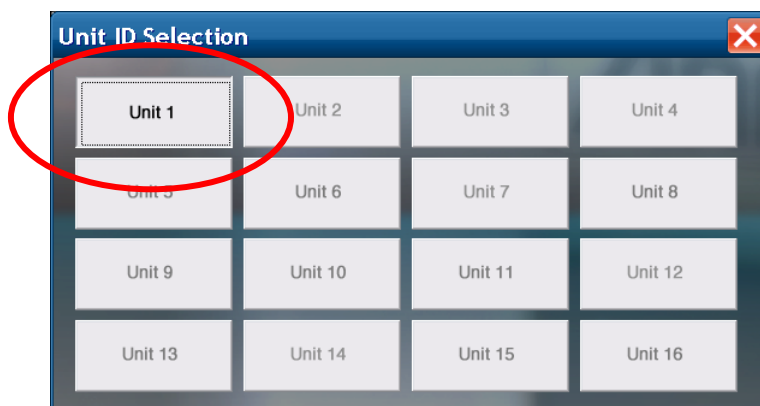
Double-click **MD1260A** on the desktop and display the selector.

Select **Multi Port**, and select the **Unit 1** button.



Select **Unit 1** and set the Unit ID.

- * It takes about one minute to set the Unit ID.



This completes the upgrade procedure.