

MT1040A Network Master Pro Release Notes

Product Configuration

The following table shows the relationship between the changed application and modules described in the Revision History.

Main frame/Module	Changed Application
MT1040A	[Framework][Remote]
MU104014A MU104015A MU104011A MU100010A MU100011A MU100090A MU100090B	[ETH][OTN][CPRI][FC][SDH/SONET][SDHPDH][GPS][MxH]
MU100020A MU100021A MU100022A MU100023A	[OTDR][FTTA][OLTS]

Latest Installer File Name

MT1040A
12.02.MT1040A_SW MX100001A-Setup-12.02-xxxxx.exe MX100003A-2.0.0.60-xxxxx.exe

The following table shows the latest software and corresponding operation manuals.

Operation Manual	Doc. No.	Version
MT1040A Transport Modules Operation Manual	M-W4038AE	8 th
MT1000A/MT1100A/MT1040A Remote Scripting Operation Manual	M-W4041AE	5 th
MT1000A Network Master Pro Transport modules Operation Manual	M-W3933AE	21 th
MT1000A Network Master Pro OTDR Modules Operation Manual	M-W3810AE	20 th
MT1000A Network Master Pro OTDR Modules Remote Scripting Operation Manual	M-W3859AE	8 th
MX100003A Scenario Edit Environment Kit Operation Manual	M-W4042AE	2 nd

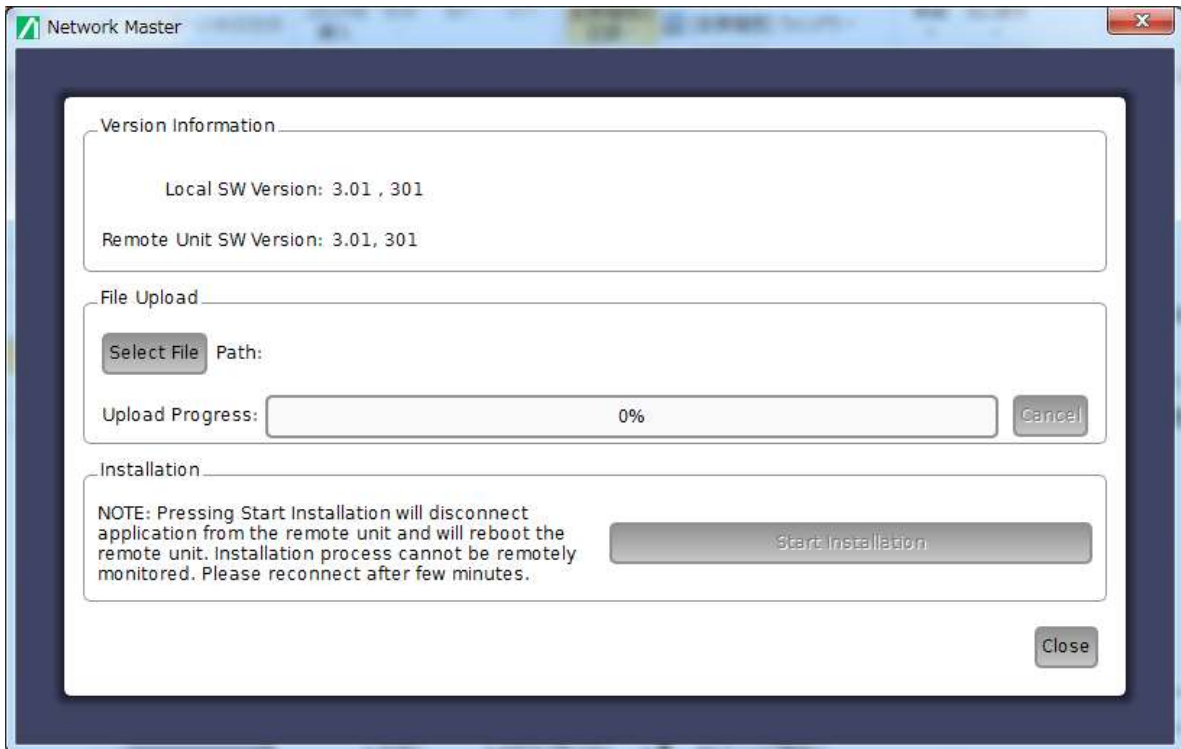
Installation Procedure

1. When using battery, make sure that there is 40% (or more) power in the battery of the instrument.
2. Remove the USB memory from the MT1040A.
3. Press the power button to shut down the MT1040A. Never force to power off by holding the power button pressed for several seconds.
4. Remove the AC adapter or cable and see the power button turns to gray.
5. Copy the installer (X.XX.MT1040_SW) to an empty USB memory stick formatted to FAT32 or NTFS file system.
6. Insert the USB memory stick into MT1040A.
7. Boot MT1040A to start installer.
The instrument will detect the USB stick, and start installing the software. After the installation has finished the instrument will reboot and start with the new software.
8. Remove USB stick after installation is complete

You can check the installed version at **System Information** screen.

Installation Procedure via network.

1. When using battery, make sure that there is 40% (or more) power in the battery of the instrument.
2. Install the Control Software(MX100001A) on your PC.
(Please refer “3.4.1 Installation of Control Software” on MT1040A Transport Modules Operation Manual.)
3. Configure the Ethernet communication between the Control Software(MX100001A) and MT1040A.
(Please refer “3.4.2 Connection and Setup” on MT1040A Transport Modules Operation Manual.)
Select the update tab on Control Software to show the upgrading box.



4. Touch Select File to launch the dialog box.
5. Select the software file. Progress bar shows Upload Progress. Touching Cancel aborts the file uploading.
6. After file uploading finishes, touch Start Installation.
Touching Start Installation will reboot the Network Master. Installation process cannot be remotely monitored. Please reconnect after several minutes.

Revision History

Version	Date	Description
12.02	2021-08-30	<ul style="list-style-type: none"> ● Key Added Features <ul style="list-style-type: none"> ➤ Supports configuration with combination of two transport modules; as a result, one unit can perform both dual-port 400GbE and quad-port 100GbE measurements. (14087) ➤ [ETH] Added 200GbE measurement function for MU104014A module. (14086) ● Fixed bugs <ul style="list-style-type: none"> ➤ [Framework] Fixed bug causing power cut at continuous operation; update firmware if using V12.00. (14075) ➤ [Framework] Fixed bug causing notification about power supply connector. (14075) ➤ Fixed bug when using QSFP-DD causing optical transceiver configuration error. (13933)
12.00	2021-05-24	<ul style="list-style-type: none"> ● Key Added Features <ul style="list-style-type: none"> ➤ [New HW] Added High Performance GNSS Disciplined Oscillator MU100090B module to product line supporting GPS, Galileo, GLONASS, Beidou, and QZSS. (13901) ➤ [Ethernet] Added SyncE support for VLAN tags. (13907) ● Fixed bugs <ul style="list-style-type: none"> ➤ [Ethernet][MU100011A] Fixed bug causing incorrect lane settings for VOD, Pre, Post, and DEF values at QSFP28 and CFP4 transceiver settings. (13851) ➤ [Ethernet] Fixed bug causing application crash when outputting IEEE1588v2 log output and setting long-term measurement. (13755) ➤ [Ethernet] Fixed bug in SyncE Frame Capture function sometimes enabling extra size-0 file. (13782) ➤ [Framework] Fixed bug preventing correct folder specification setting when removing USB memory while results folder set to USB. (13880)
11.08	2021-03-18 2021-03-30	<ul style="list-style-type: none"> ● Key Added Features <ul style="list-style-type: none"> ➤ [Framework] Added WLAN communications function using USB WLAN dongle. ➤ [ETH] Added OAM function for Reflector application. (13651) ➤ [ETH] Added function to Reflector application to respond to VLAN ARP and ping (12517)

		<ul style="list-style-type: none"> ➤ [SEEK][Framework][MX109020A] Added Opt-003 to MX109020A supporting upload of SEEK scenario execution results to cloud storage and customer's server (13833) ➤ [Framework][MX109020A] Added function for updating instrument connected to MX109020A to latest firmware version (13832) ➤ [OTDR] Added fiber length check Enable/Disable function When this setting is Enable, the fiber length is examined prior to measurement and if it exceeds the distance range, the optical pulse output interval is adjusted automatically to prevent generation of unwanted reflections from points other than the event point. When this setting is Disable, the time until measurement starts is shortened. This function is always enabled for older version, but can be enabled/disabled in this version. When the language setting is not Japanese, the Enable default is set automatically at a version upgrade. (13698) ● Fixed bugs <ul style="list-style-type: none"> ➤ [ETH] Fixed bug causing normal Link status even when HighSER detected at 400GbE interface. (13645) ➤ [ETH] Fixed bug causing non-detection of Local Fault at Link-down at 400GbE interface. (13562) ➤ [ETH][OTN][NoFrame] Added improvements to MU10401xA module QSFP-DD/QSFP28/QSFP+ start sequence (13715) ➤ [Wireshark] Fixed bug causing error when using eCPRI decode Lua script when using Wireshark version later than 3.4 on PC. (13682) ➤ [ETH] Fixed bug preventing recognition of 1519-byte Frame over size error. (13679) ➤ [SEEK] Fixed error message when SEEK results file name includes illegal character (/, !, ?, etc.). (13644) ➤ [ETH] Fixed bug preventing correct generation of report file at long-term measurement at RFC2544 application. (13507) ➤ [SDHPDH] Fixed bug preventing communications at E3 and DS3 interfaces (13744) ➤ [ETH] Fixed bug causing instrument crash when executing IPv6 Stateless for IEEE1588 (13743) ➤ [ETH] Fixed bug causing detection of unintentional frame loss
--	--	--

		<p>when executing burst test in RFC2544 application (12818)</p> <ul style="list-style-type: none"> ➤ [RFS] Fixed bug preventing display of cursor when USB mouse connected (13800) ➤ [SEEK] Fixed a bug where the MU104011A or MU104015A module was not displayed in the MX100003A Scenario Edit Environment kit. (13861)
11.05	2021-02-04	<ul style="list-style-type: none"> ● Key Added Features <ul style="list-style-type: none"> ➤ [Framework] A warning pop-up is added for AC adapter connection. Please follow the instructions as shown.(13767)
11.04	2020-09-30	<ul style="list-style-type: none"> ● Key Added Features <ul style="list-style-type: none"> ➤ [ETH] Added support for 400GbE FEC Degrade function. (13620) <ul style="list-style-type: none"> ✧ Detect Degrade SER ✧ Detect/Insert Remote/Local Degrade ➤ [ETH] Changed default symbol error rate threshold setting from 1E-6 to 1E-4 due to FEC symbol error status at 400GbE interface. (13639) ● Fixed bugs <ul style="list-style-type: none"> ➤ [ETH] Fixed bug causing continuing frame loss count after receiving normal frame at Link-down for 1 or more minutes during 400GbE frame loss measurement. (13577) ➤ [ETH] Fixed bug causing measurement result output without errors and no saved LOFA counter history log. (13624) ➤ [ETH][RoE] Fixed bug causing sending of IFG of less than 5 bytes at line rate of at least 80% at following frame size(s) at 25GbE interface. (13559) ➤ [ETH] Fixed bug causing Ping application crash at output of PDF report after long-term measurement covering several days. (13410) ➤ [ETH] Fixed bug causing generation of file with missing data at Ping application when outputting PDF report after long-term measurement of several days. (13408) ➤ [CPRI/OBSAI] Fixed bug preventing correct bit-rate setting at startup and file loading. (13612) ➤ Removed following security vulnerability. (13544) <ul style="list-style-type: none"> ✧ X11 server at MT1000A/MT1100A/MT1040A GUI accepts unrestricted connections from host
11.03	2020-08-11	<ul style="list-style-type: none"> ● Initial release. Support for the following products:

		<ul style="list-style-type: none">➤ MT1040A Network Master Pro➤ MU104014A 400G(QSFP-DD) Multirate Module➤ MU104015A 400G(OSFP) Multirate Module➤ MU104011A 100G Multirate Module➤ MU100010A 10G Multirate Module➤ MU100011A 100G Multirate Module➤ MU100020A OTDR Module 1310/1550nm SMF➤ MU100021A OTDR Module 1310/1550/850/1300nm SMF/MMF➤ MU100022A OTDR Module 1310/1550/1625nm SMF➤ MU100023A OTDR Module 1310/1550/1650nm SMF➤ MU100090A High Performance GPS Disciplined Oscillator
--	--	---

Known Problems

	Version	Description
MT1040A MU104014A MU104015A MU104011A MU100010A MU100011A	V12.02	<ul style="list-style-type: none"> ● [ETH] [MxH] With Ethernet or eCPRI/RoE BERT applications, screen may freeze at measurements including UDP packets when receiving UDP packets at different destination port than source port setting. This bug occurs only at Port 1; if this bug occurs, restart the MT1040A as a workaround solution. (12575) ● [ETH] Bug may prevent error recognition when receiving ICMP reply packets including error with packet length of more than 463 bytes. (12819) ● [ETH][OTN][SDH][CPRI/RoE][FC] A crash occurs sometimes when outputting a report set to include the Event Log in CSV format. If this occurs, work-around by outputting the report set to not include the Event Log. Use the CSV output at the Event Log Results screen to obtain the event log in CSV format. (13579) ● [ETH] There may not be a transmission at every burst, depending on settings in Mon/Gen application for v7.01 and later. (13893) ● [ETH] Known bug in Ethernet BERT application causes status alarm after stopping long-term measurement; workaround by enabling following options at BERT option test settings (14090) <ul style="list-style-type: none"> ➤ Display only BER alarm at measurement ➤ Ignore BERT measurement result frame-loss seconds ● [ETH] Known bug in Ping application causes output of IPv4 settings instead of IPv6 in port setting information column when outputting IPv6 measurement results as pdf report. (14083)