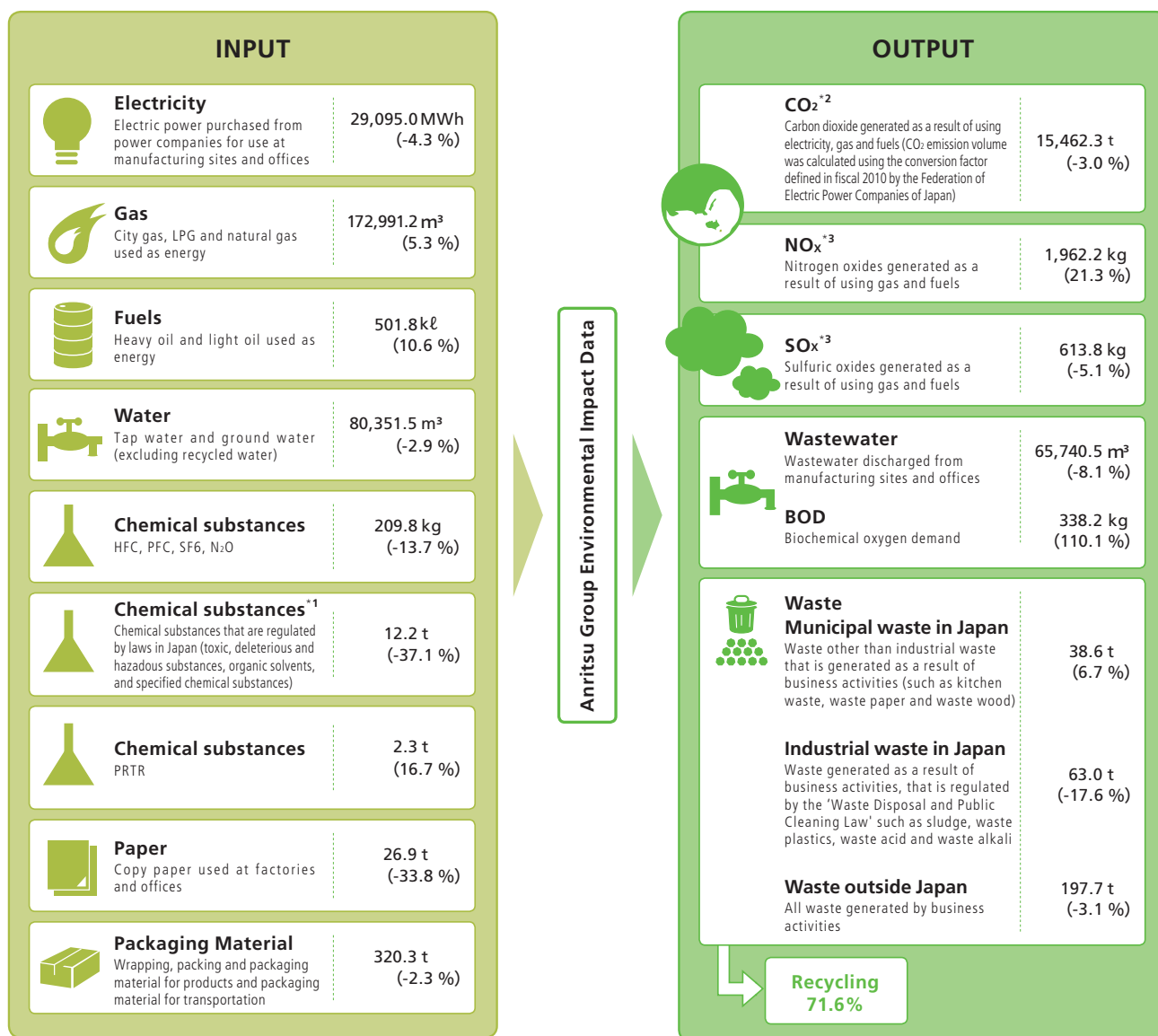


Anritsu Group Environmental Impact Data



Anritsu quantifies its environmental impact and environmental protection activities in monetary and physical units in order to assess and upgrade the efficiency of these activities. We disclose the results to enable our stakeholders to gain a deeper understanding of our environmental actions. The environmental impact mass balance*4 of the Anritsu Group's global business activities is summarized below. Percentage changes from fiscal 2015 are in parentheses.

*1 A heavy oil used as fuel is not included.

*2 Calculations for CO2 emissions from energy use for sites both in and outside Japan are based on the emission factor under the Act on Promotion of Global Warming Countermeasures. Calculation of CO2 emission volume from electricity use in the United States is based on the emission factor of 0.285 (t-CO2/MWh), while CO2 emission volume from electricity use in regions other than the United States is based on the emission factor provided by the Electric Council for a Low Carbon Society of Japan (provisional figure for fiscal 2016). Data includes the CO2 conversion values for greenhouse gases other than CO2.

*3 For NOx and SOx, annual emissions are calculated based on values measured annually.

*4 Environmental impact mass balance: Environmental impact expressed in the form of a balance sheet in which substances entering the company are identified and listed by name and mass in one column and substances and mass exiting the company are identified and listed in the other column to more clearly display the relationship between business activities and environmental impact.



WEB

Detailed Data