

The Future Goal of Our Sustainability Management

Company Philosophy
Company Vision
Company Policy

Sustainability Policy

Solving Social Issues Through Business

Anritsu Group

Put into place a safe and secure infrastructure which leads to the building of a sustainable society and encourages innovation



Test and Measurement Business

- Put in place a robust network infrastructure



PQA Business

- Reducing food loss
- Ensuring product quality



Information and Communications Business

- Put in place a robust network infrastructure
- Preventing and mitigating natural disasters



Sensing & Devices Business

- Put in place a robust network infrastructure
- Ensuring healthy lives



Challenges to Meet the Needs of Society (ESG)

Promoting Global Environmental Protection

Contributing to the creation of a sustainable society with sustainable consumption and corporate production practices

- Increasing the share of private renewable energy generation of total energy consumption
- Reduction in CO₂ emissions volume (energy consumption volume) and water usage volume
- Developing and manufacturing high-quality and environmentally friendly products
- Supply chain management that lowers environmental impact



Maintaining Harmony with the Global Socio-Economy

Together with our diverse human resources, we seek to contribute to the creation of workplaces where each individual can achieve personal growth and experience job satisfaction.

- Respect for human rights and diversity
- Human resources development
- Occupational health and safety
- Supply chain management that gives due regard to human rights



Expanding and Strengthening Governance

Ensuring ethical corporate activities through risk management and transparent, fair, quick, and resolute decision making

- Corporate governance
- Establishing compliance as a part of our mind-set
- Promoting risk management



The Creation of Shared Value through the Promotion of Communication

Contributing to the creation of shared value with collaboration among all stakeholders

- Providing information to and communicating with stakeholders

Test and Measurement Business

Communications semiconductor manufacturers

Communication module manufacturers

Smartphone manufacturers

Wireless base station manufacturers

Telecommunications operators

Automobile makers

IoT terminal manufacturers

Home electronics manufacturers

Aerospace industry

Others

PQA Business

Processed food producers

Pharmaceutical manufacturers

Others

Customers

Information and Communications Business

Financial services providers

Educational institutions

Local governments

Telecommunications operators

Others

Sensing & Devices Business

Medical equipment manufacturers

Telecommunications operators

Telecommunications parts manufacturers

Others

The Future Goal of Our Sustainability Management

Developing a Safe, Secure, and Prosperous Global Society

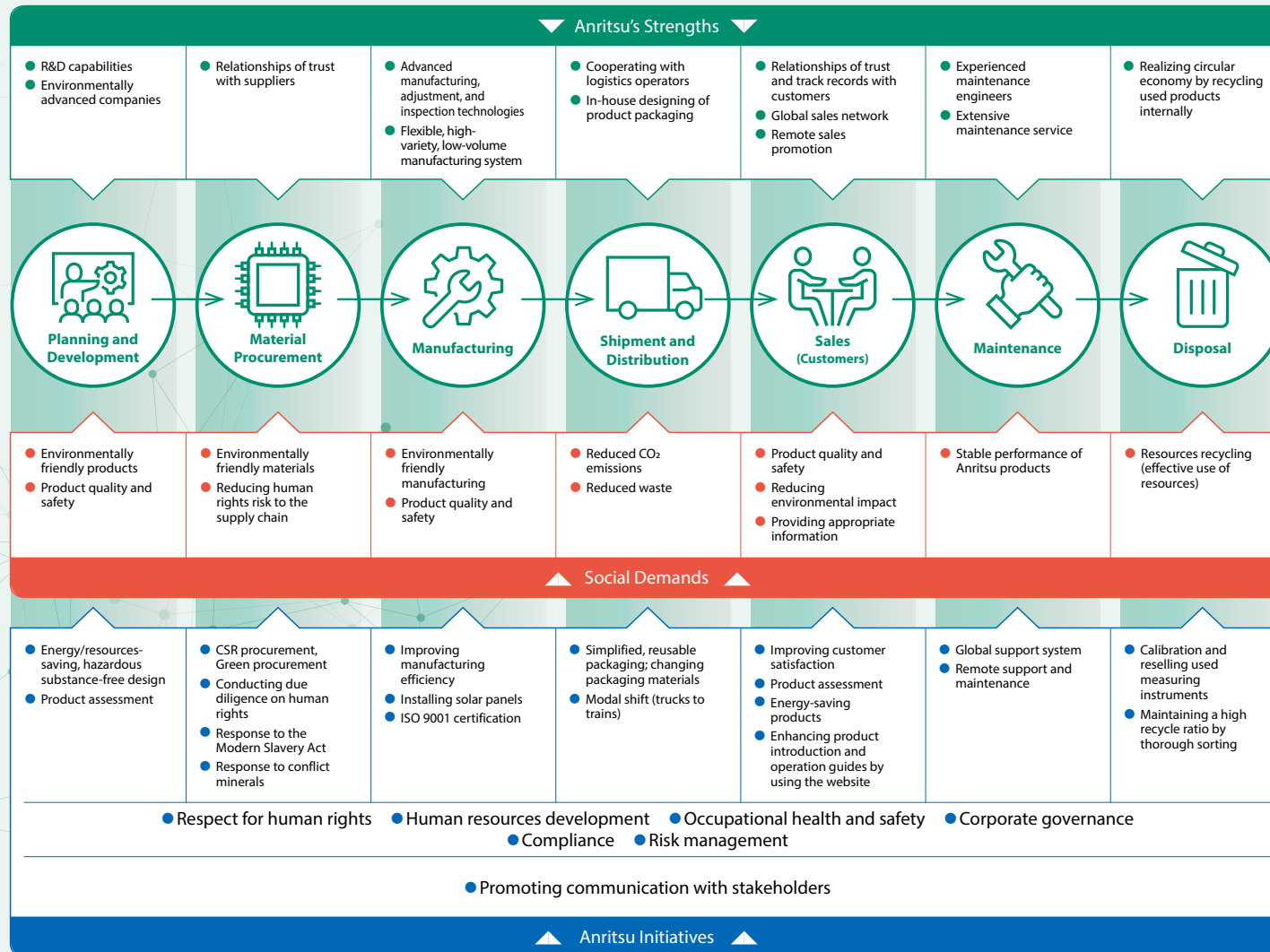
Anritsu will contribute along with its customers to the resolution of social issues through its business operations. The Company takes on challenges to meet the needs of society and places great value on communication with stakeholders while working to advance the sustainability of a global society.

Contribution Areas



Anritsu's Value Chain and Its Strengths for Supporting Business

Anritsu contributes to the creation of a safe, secure, and prosperous society by addressing social expectations such as environmental protection and respect for human rights throughout our entire business operations, from planning to development and the ultimate disposal of products. To that end, the Company is establishing a value chain through co-creation with stakeholders.



Solving Social Issues Through Business

Anritsu Group

Put into place a safe and secure infrastructure which leads to the building of a sustainable society and encourages innovation



Test and Measuring Business

- Put in place a robust network infrastructure



Measuring solutions for the telecommunications market

PQA Business

- Reducing food loss
- Ensuring product quality



Quality assurance solutions for the production lines of processed foods and pharmaceuticals

Information and Communications Business

- Put in place a robust network infrastructure
- Preventing and mitigating natural disasters



Bandwidth control devices, video surveillance system

Sensing & Devices Business

- Put in place a robust network infrastructure
- Ensuring healthy lives



Optical devices, Ultrafast electron devices

Test and Measurement Business

With a mission of being the first to deliver optimal testing and measurement solutions with its advanced measurement technologies, Anritsu contributes to the creation of industry and advances in innovation that assist with the development of a sustainable society by helping customers maintain safe and secure communication infrastructure.

Social Issues and Customer Needs

Anticipating the next social transformation through digital transformation

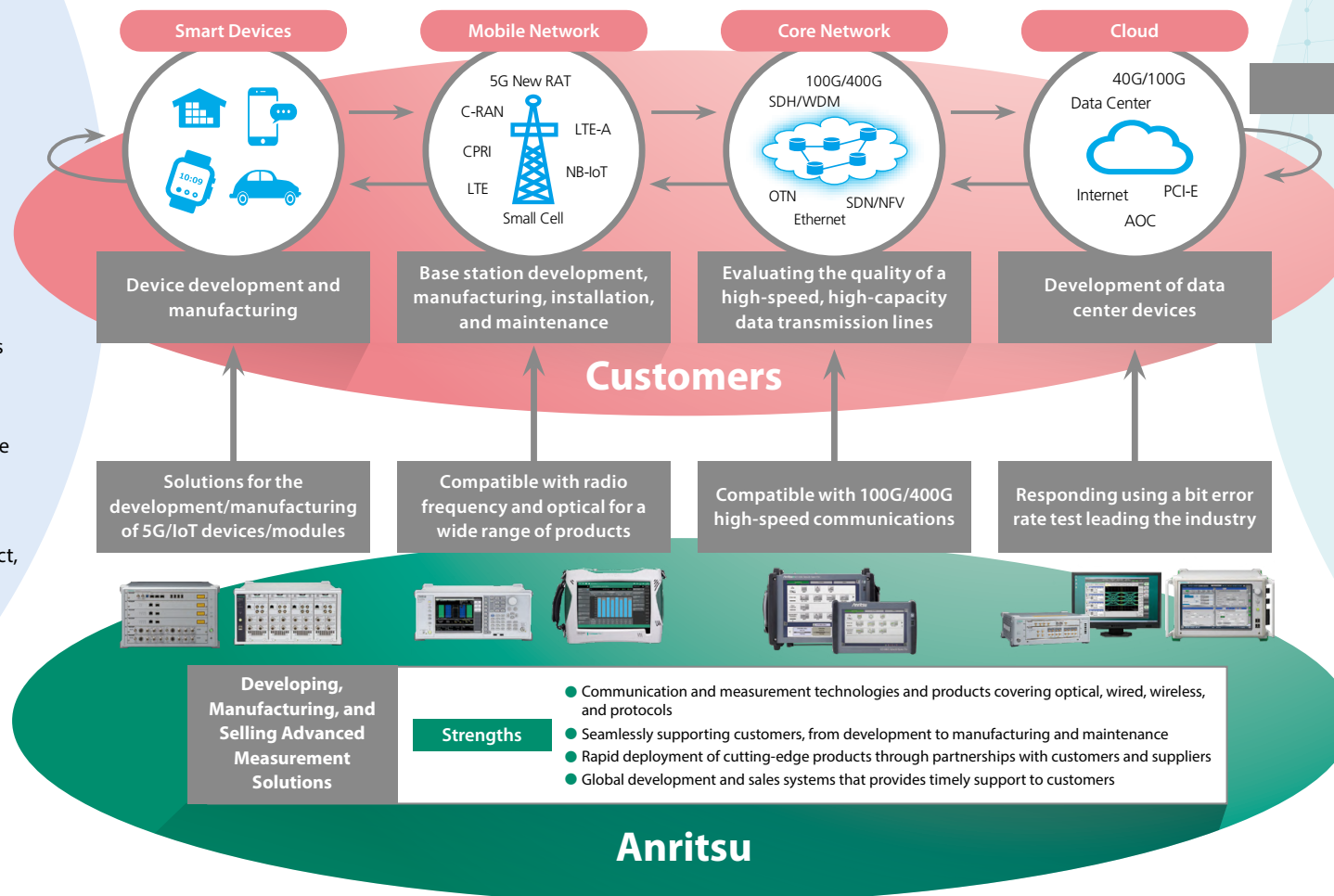
Social Issues

- Digital transformation
- Strengthening telecommunication infrastructure
- Improving telecommuting environment
- Reducing traffic accidents
- Improving industrial efficiency
- Eliminating regional disparities

Customer Needs and Interests

- Quick response to cutting-edge 5G technology
- Global support
- High Return on Investment
- Reducing environmental impact, etc.

Evaluating and Inspecting the Development, Manufacturing, Construction, and Maintenance of 5G Infrastructure Using Anritsu's Measuring Instruments



Future Society

Leveraging 5G advantages to create a prosperous future with solutions that address social issues

5G

- Ultra-high-speed, large-capacity
- Multiple simultaneous connections
- Ultra-low latency



Anritsu's Test and Measurement Business Support Customers Develop 5G Smartphones

Smartphones are now essential tools for daily communication. Cutting-edge 5G smartphones are expected to transfer a larger volume of data faster than 4G in real time and new services and applications will be created that leverage these advantages.

5G smartphones, as with conventional smartphones, are required to meet international wireless communication standards and clear stringent inspections under these standards before they are launched into the market. Anritsu was the first in the industry to develop, manufacture, and market a testing system for these inspections. The Company helps customers such as smartphone makers and communications operators launch 5G smartphones at an early stage using the system.

The diagram on the right is an example of a 5G-compliant automated testing system that enables users to quickly review hundreds of test patterns.

Glossary

1 GCF (Global Certification Forum)

An organization that formulates network operations and testing standards for the certification of mobile terminals to ensure the global interoperability of mobile terminals

2 OTA chamber

A chamber that blocks external radio waves and prevents the internal reflection of radio waves to transmit and receive radio waves over the air and measure the performance of a smartphone

3 Millimeter wave

Conventionally refers to waves with a frequency of 30–300 GHz. The term includes waves with a frequency of 27.0–29.5 GHz for 5G in the telecommunications industry in Japan

4 Spurious emissions

Unwanted frequency components other than the design intent of signals

The smartphone under development is required to have its performance verified with a GCF 1-certified testing instrument and to clear inspection specified by wireless communication standards.

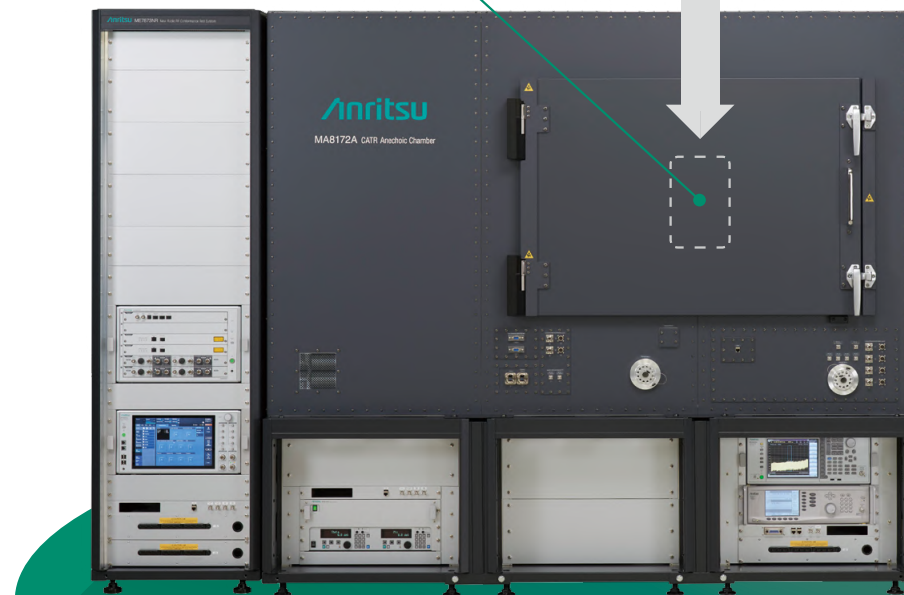
The test is conducted by placing a smartphone inside the anechoic chamber (OTA chamber 2). The millimeter wave 3 test requires sophisticated measurement technology.

Millimeter wave-compliant 5G smartphone under development



Let's launch new models of smartphones at an early stage by verifying their performance with Anritsu 5G Conformance Testing System, which acquired the world's first GCF certification (as of April 2020) for a millimeter spurious 4 emissions test!

Customer



Anritsu 5G Testing System

ME783NR, a New Radio RF Conformance Testing System

PQA Business

The PQA Business provides solutions for automating the quality inspection process on production lines of the food and pharmaceutical industries. Representative Anritsu initiatives (presented below) address social issues faced by the food industry and account for over 80% of our PQA business.

Social Issues and Customer Needs

Stable supply of safe and secure foods

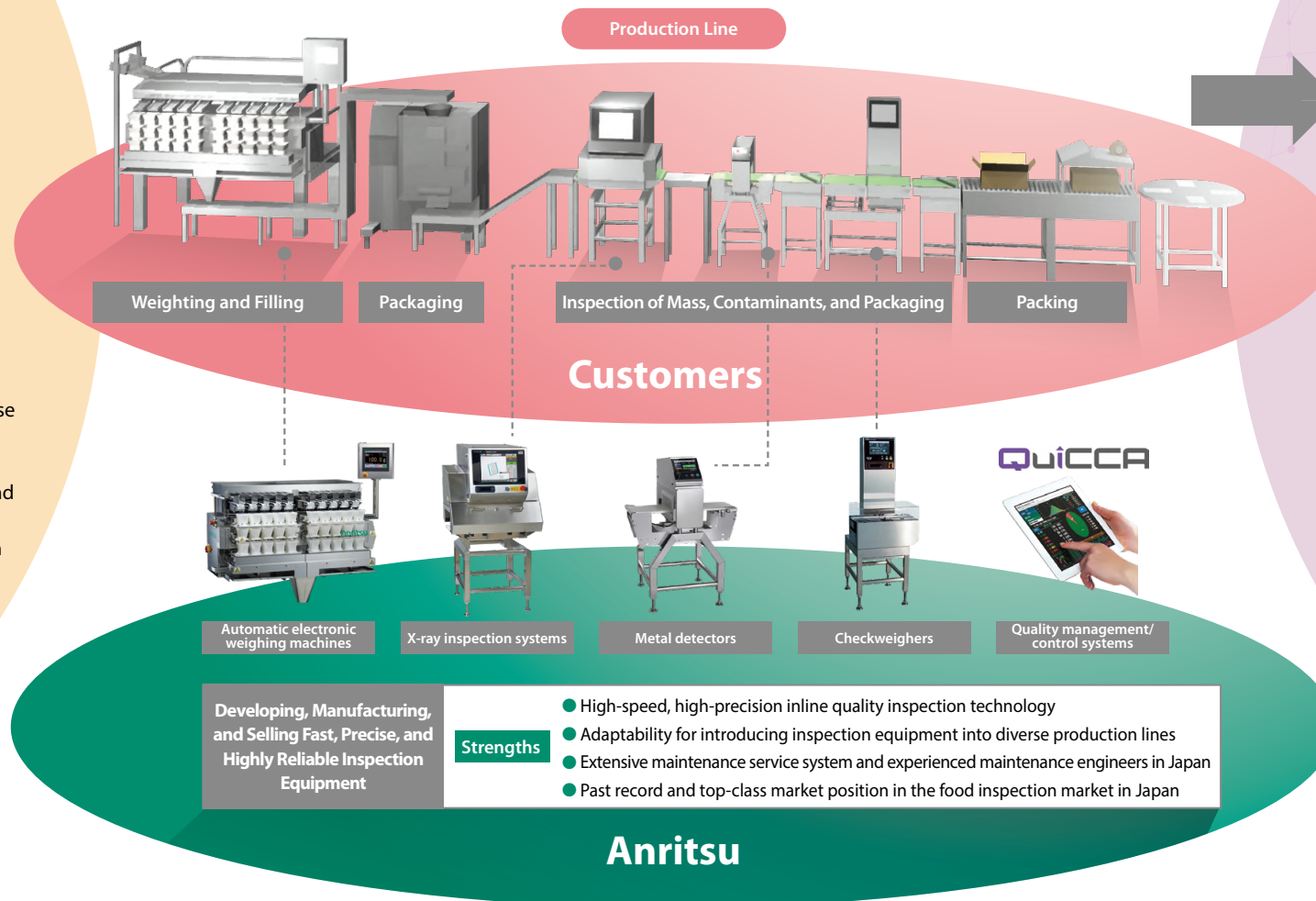
Social Issues

- Stable supply of healthy, tasty foods
- Assurance of safe and secure food quality
- Reducing food loss
- Alleviating labor shortages

Customer Needs and Interests

- High-speed, high-precision inspection
- Excellence in sanitation and ease of cleaning
- Easy maintenance
- Automated production lines and remote monitoring
- Improved productivity through the use of data

Realizing the Automation of Quality Inspection Process with Anritsu's Quality Assurance Solutions



Future Society

Increasing the sophistication of quality assurance for food to achieve:

- A safe and secure society
- A sustainable society with little food loss



Anritsu's PQA Business Contributes to Reducing Food Loss by Increasing the Sophistication of Quality Assurance

Amid a dramatic rise in food demand due to a growing population and economic development, the problem of food loss, or food that is discarded rather than consumed, has become a major social concern and is the target of an SDG. In this context, many food manufacturers cite reducing food loss as a key issue along with improving food taste and ensuring safety and security. Various food processors and distributors have been raising awareness of the issue and cooperating to reduce food loss.

Advances in sterilization, storage, and packaging technologies can significantly extend the expiration dates of processed foods, leading to reduced food loss. However, foods that are fit for consumption longer can remain for extended periods on the market or shelves at home, while recalling or discarding these products can lead to substantial losses. For food manufacturers, extending expiration dates reduces the risk of food loss, but the increased risk of losses when the products are recalled highlights the need for the strictest standards in quality assurance.

Anritsu's quality assurance solutions have been used to prevent the intrusion of defective products at the manufacturing process and minimize the risk of product recalls. Our state-of-the-art X-ray inspection equipment with dual energy sensors and AI can effectively inspect and pull from the line certain products, including overlapping items that are difficult for conventional equipment to inspect. We are contributing to reducing food loss further by increasing manufacturing yield with improved accuracy in determining product acceptance.



Information and Communications Business

Anritsu contributes to realizing a safe, secure, and comfortable society with its customers by providing highly reliable solutions to improve communications quality and video surveillance solutions while leveraging its advanced technology.

Social Issues and Customer Needs

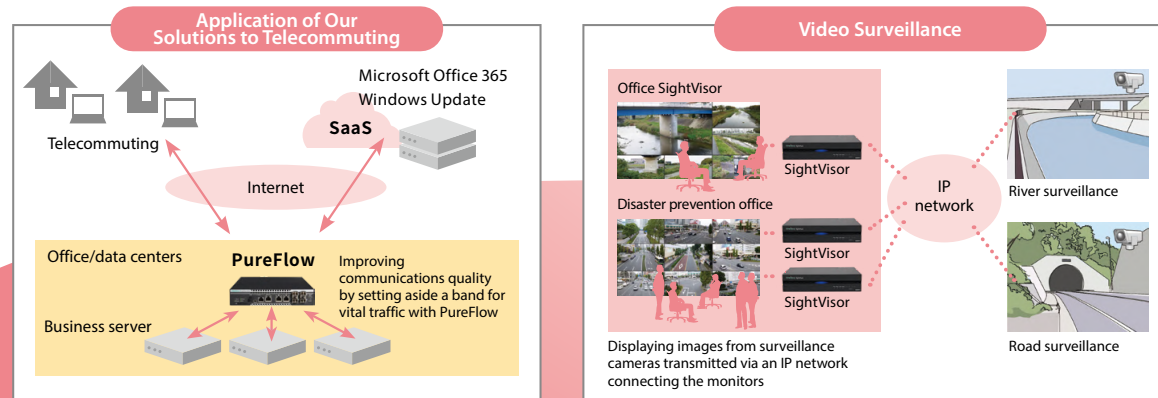
Anticipating the next social transformation through digital innovation.

Social Issues

- Dramatic rise in traffic due to increased telecommuting and online education
- Increase in natural disasters such as torrential rains and earthquakes

Customer Needs and Interests

- Easily dealing with communication failures in a company (late transmission, disconnection)
- Accurately grasping the state of a monitoring site with visual images in real time



Eliminating unstable access to an operating server due to an increase in the number of telecommuting employees by introducing PureFlowWS1 to implement priority control of the communications band.

High-resolution images, from surveillance cameras across a wide area to monitor rivers and roads, are displayed on monitors in the disaster prevention office. They capture multifaceted information from multiple locations to prevent and mitigate the impact of disasters.

Customers



Bandwidth Controller PureFlowWS1
Improving communications quality and stabilizing network access



Video Information System SightVisor2
Broadcasting high-vision images on a nine-window screen

Developing, Manufacturing,
and Selling Highly Reliable
Communications Network
Equipment

Strengths

- Proprietary technologies and solution proposal capability
- Strong installation base

Anritsu

Future Society

Creating a communications environment that ensures stress-free, comfortable connectivity anywhere, anytime



Realizing a society in which measures to prevent and mitigate natural disasters have advanced and everyone can live securely



Sensing and Devices Business

Anritsu contributes to realizing a safe, secure, and comfortable society by improving convenience in our lives together with customers through the provision of optical devices that constitute core components of industrial products and Ultrafast electron devices across the world.

Social Issues and Customer Needs

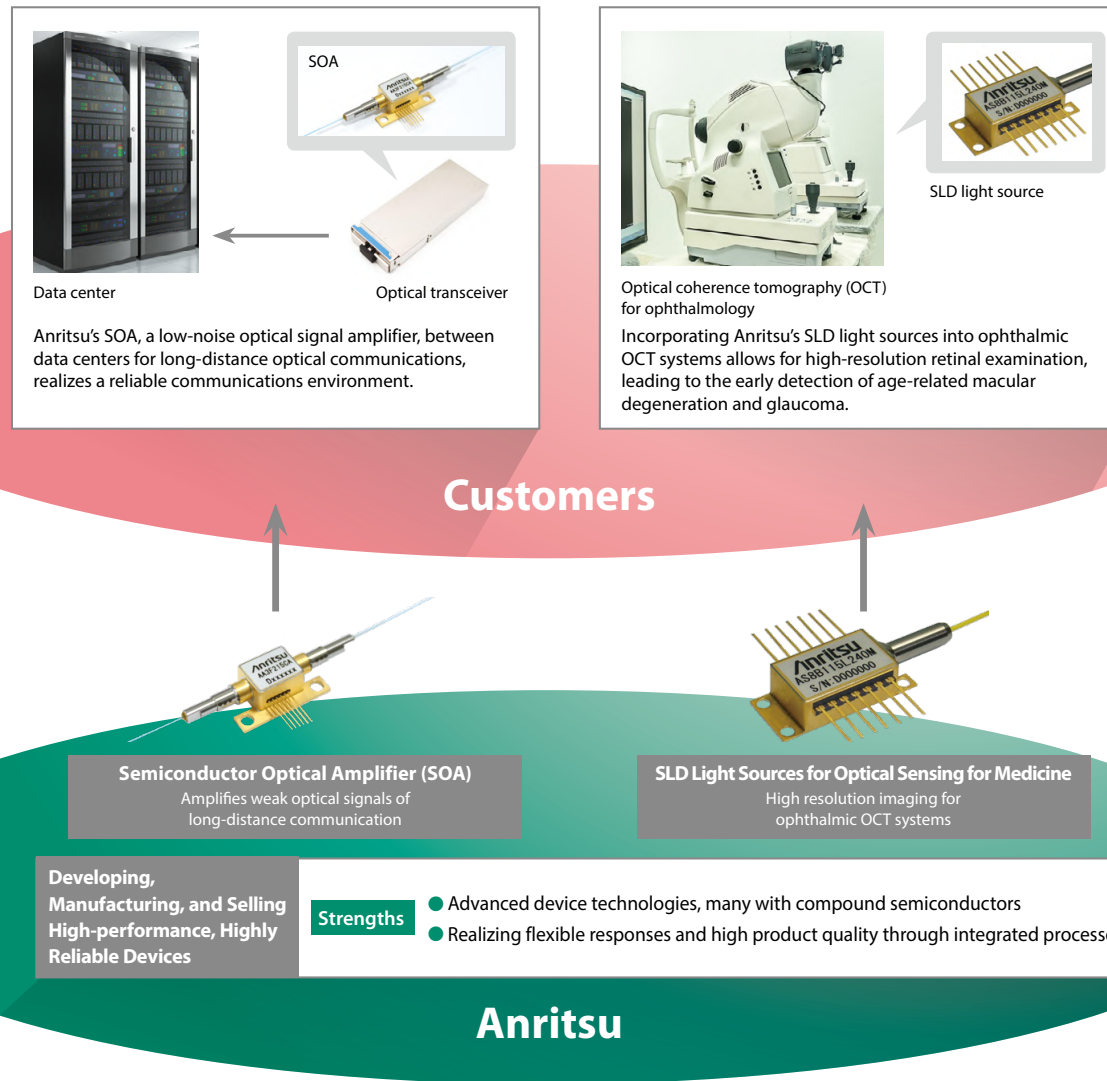
Anticipating the next social transformation through digital transformation

Social Issues

- Building a robust communications infrastructure that handles increased data traffic
- Increased number of patients with eye diseases due to the aging population

Customer Needs and Interests

- Secured quality of optical signals transmitted through optical fiber that constitutes part of the communications infrastructure
- Development of a high-resolution retinal examination device



Future Society

Helping to resolve social issues through digital transformation and high-speed, high-capacity communications



Realizing a society in which people of all generations can enjoy healthy lives due to medical advances



R&D and Intellectual Property that Support the Anritsu Brand Value

The Anritsu Group contributes to realizing a sustainable society with its customers by developing “Original & High Level” products and solutions and delivering them globally through the acquisition, retention, and utilization of advanced technologies.

Strategic Intellectual Property Management

