

Investor Information

As of March 31, 2008

Head Office: **ANRITSU CORPORATION**
 5-1-1 Onna, Atsugi-shi, Kanagawa,
 243-8555 Japan
 Tel: +81-46-223-1111
 URL: <http://www.anritsu.com>

Established: March 1931

Paid-in Capital: ¥14.0 billion

Number of 3,963 (Consolidated)

Employees: 1,074 (Non-consolidated)

Stock Listing: Tokyo (Ticker Symbol No: 6754)

Transfer Agent: The Sumitomo Trust & Banking Co., Ltd.
 4-4, Marunouchi 1-chome, Chiyoda-ku,
 Tokyo 100-8233 Japan

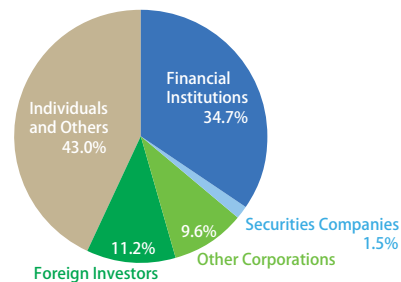
Number of Shareholders: 17,262

Rating: Rating and Investment Information, Inc.
 Long-Term: BBB
 Short-Term: a-2

Authorized Shares: 400,000,000

Issued Shares: 128,037,848

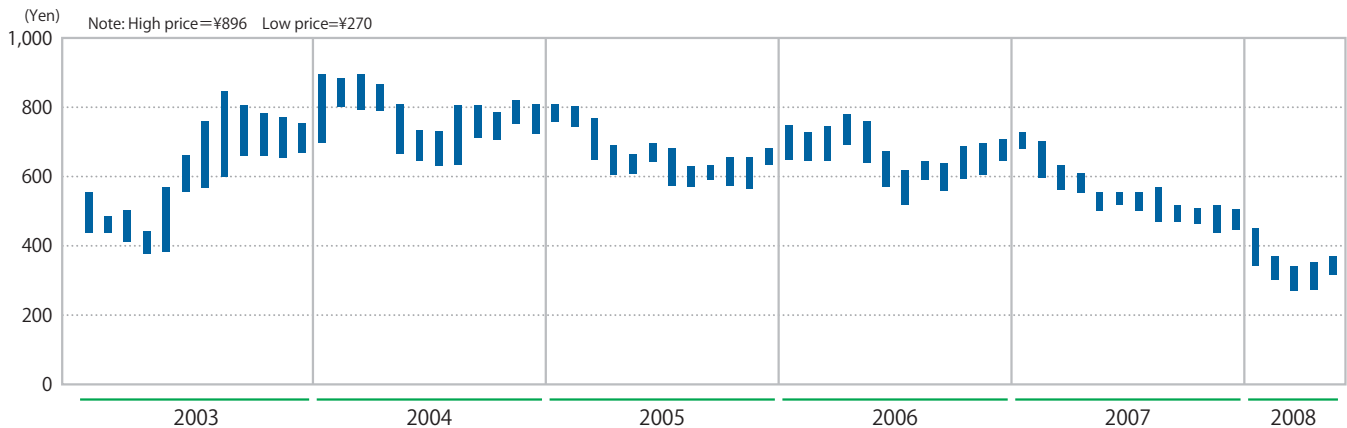
Breakdown of Shareholders:



Major Shareholders:

Shareholder Name	Number of Shares (thousands)	Percentage of Total Shares Outstanding
Japan Trustee Services Bank, Ltd. (Trust Account from The Sumitomo Trust & Banking Co., Ltd., NEC Retirement Benefit Trust Account)	19,200	15.00
NEC Corporation	8,312	6.49
The Master Trust Bank of Japan, Ltd. (Trust Account)	4,057	3.17
Morgan Stanley & Co. International PLC	3,168	2.47
Mitsui Sumitomo Insurance Co., Ltd.	2,964	2.32
Japan Trustee Services Bank, Ltd. (The Sumitomo Trust & Banking Co., Ltd. Retirement Benefit Trust Account)	2,500	1.95
Japan Trustee Services Bank, Ltd. (Trust Account)	2,359	1.84
Sumitomo Life Insurance Company	2,314	1.81
Goldman Sachs International	1,817	1.42
Trust & Custody Services Bank, Ltd. (Securities Investment Trust Account)	1,566	1.22

Monthly Stock Price Range on the Tokyo Stock Exchange



Monthly Trading Volume

