

# Upgrading the MT8870A Firmware

Universal Wireless Test Set MT8870A

## Introduction

This application note explains how to upgrade the MT8870A firmware.

The firmware is upgraded using the MX887900A Utility Tool. The Utility Tool is supplied on the DVD and must be installed separately from the CombiView installation.

## Upgrading the Firmware

1. Start the Utility Tool from the shortcut created on the desktop during installation, from the Anritsu folder within your programs menu, or from the CombiView Manager.
2. Select the connection between the PC and the MT8870A.
  - Click "IPv4" if you are using an Ethernet connection to the MT8870A.
  - Click "GPIB" if you are using a GPIB connection to the MT8870A.
3. Select your network interface in the dialog that displays and click [OK].
4. Wait for the Utility Tool to detect the instruments on the network.
5. You can upgrade the firmware on multiple instruments simultaneously or you can upgrade the firmware on a single instrument.
  - To upgrade the firmware in multiple instruments simultaneously, click "Upgrade Firmware (All Units)" and select the required instruments in the "Target Instrument" pane.

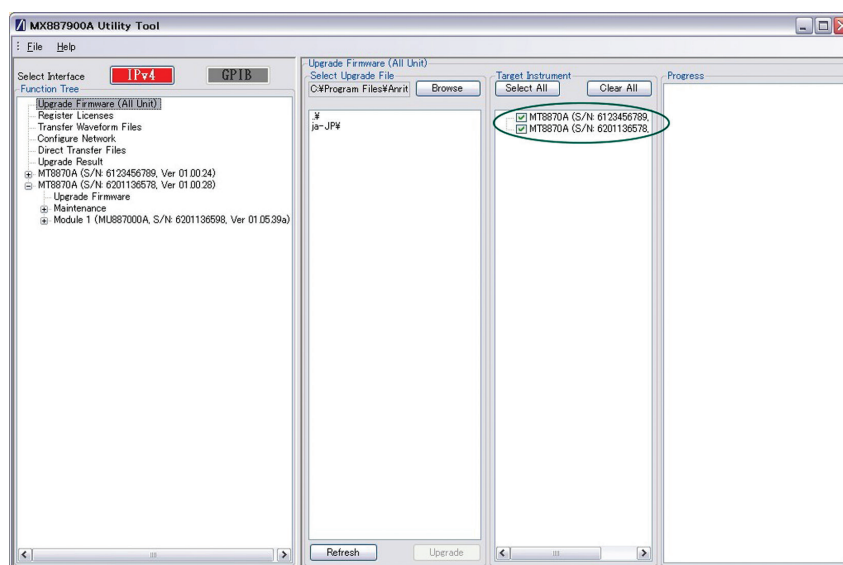


Figure 1. Upgrade Firmware in Multiple Instruments

- To upgrade the firmware in a single instrument, display the instrument sub-nodes in the Function Tree and click "Upgrade Firmware".

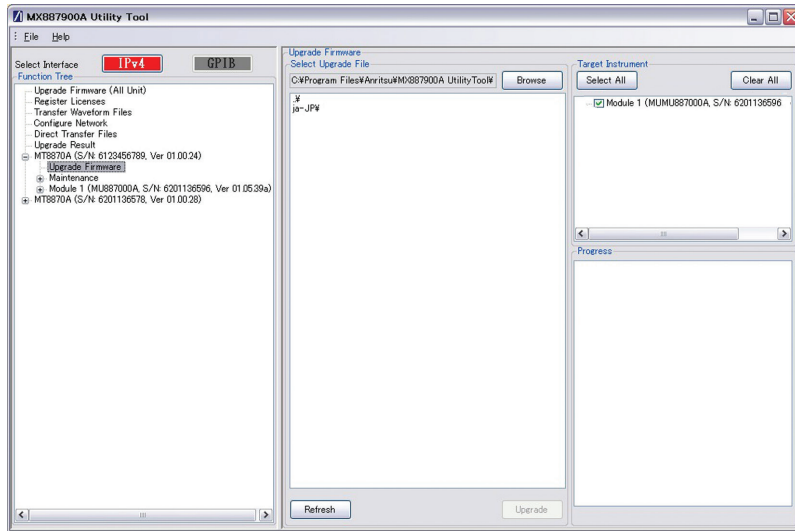


Figure 2. Upgrade Firmware in Single Instrument

6. Click [Browse] and locate the new firmware file to be used in the upgrade. The file will be named in the format "MX887000Axx.xx.xx.inst" where xx.xx.xx represents the firmware version.
7. Click [Upgrade] to start the firmware upgrade. The MT8870A restarts automatically when the firmware upgrade is complete. This may take several minutes.