

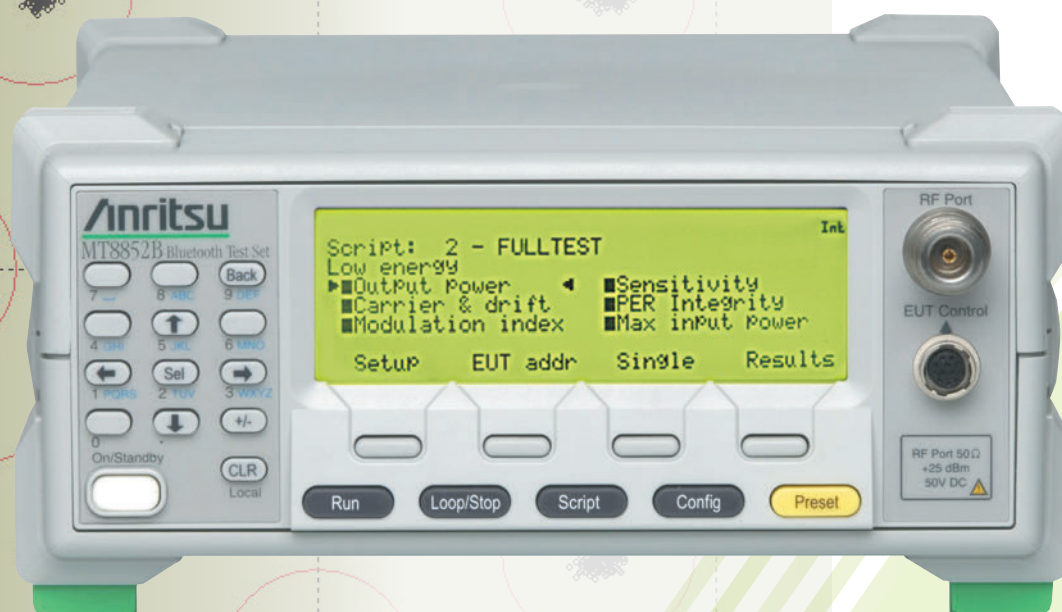
Anritsu Advancing beyond

BlueSuite Pro3

Graphical Test & Analysis Software for the MT8852B



BlueSuite
Pro3



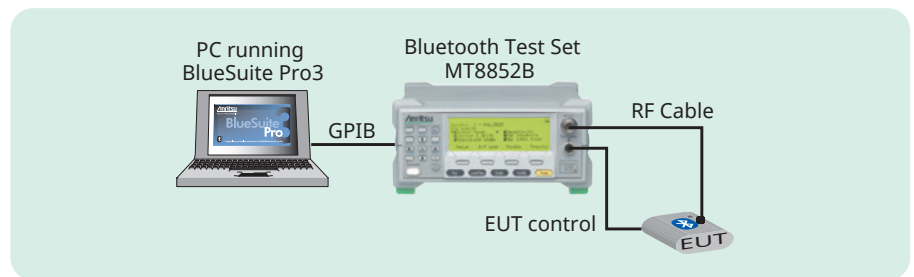
Introducing BlueSuite Pro3

BlueSuite Pro3 is a powerful software package designed for use with the Bluetooth Test Set MT8852B.

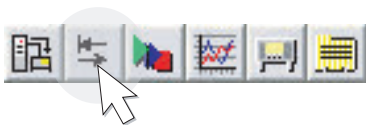
BlueSuite Pro3 allows you to:

- View EUT packets through the display of frequency deviation, power burst profile, IQ constellation, and vector graphs.
- Configure and run sensitivity sweeps and display the results graphically.
- Configure and run measurement sweeps for seven different tests and display the results graphically for each of the 79 Bluetooth channels.
- Configure and run audio tests and display the results graphically.
- Configure and run a power control test and display the results graphically.
- Read and write script and limit settings to and from the MT8852B.
- Edit and run a complete test script and generate a detailed report of the results.
- Step through individual connection and test mode controls to determine the cause of problems otherwise difficult to isolate.

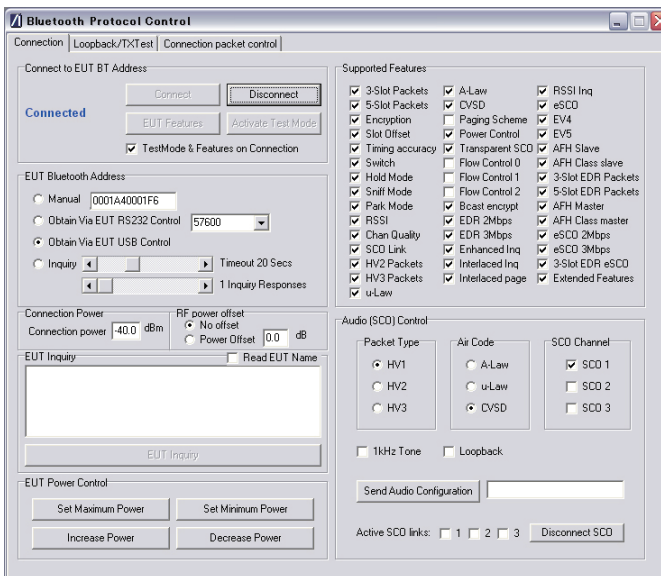
Configure the instrument and establish a GPIB connection with the MT8852B.



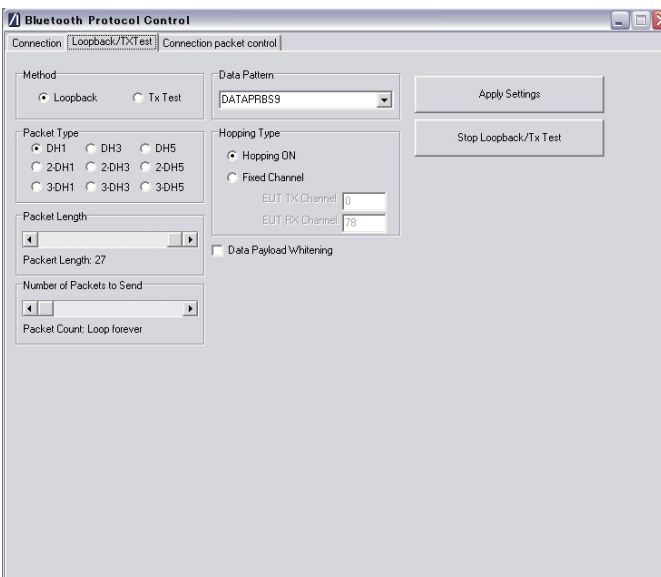
Establish a Bluetooth Connection



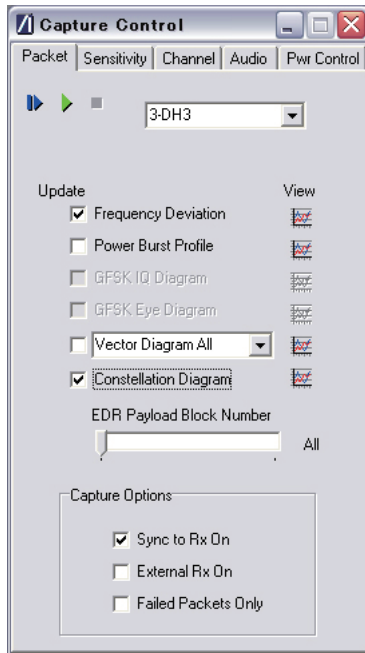
Use the [Bluetooth Protocol Control] window to establish a Bluetooth connection, activate test mode, and read the EUT supported features. The SCO settings of the EUT can be fully controlled to facilitate audio testing and validate SCO functionality.



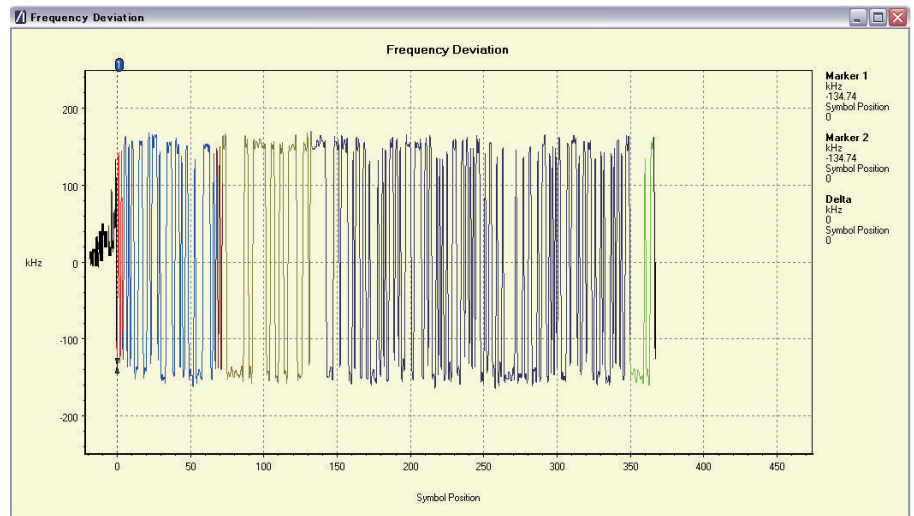
Send individual test controls to the EUT and loop back packets for graphical viewing and analysis.



View Standard Rate and EDR Packets

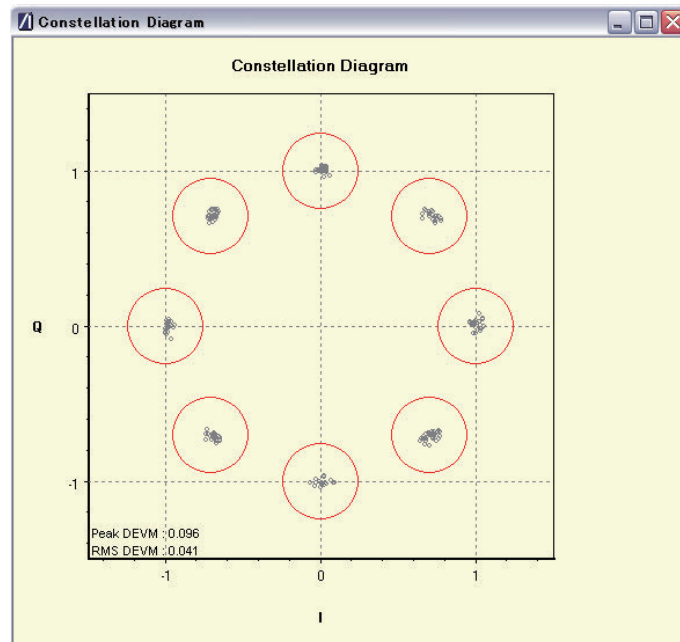


Open the [Capture Control] dialog, select the required analysis mode and click Run or Run Continuous. Both standard rate GFSK and EDR ($\pi/4$ DQPSK and 8DPSK) modulated packets can be analyzed in detail by selecting from a number of waveform options; Frequency Deviation vs Symbol, Power Burst Profile, Vector diagrams, and Constellation diagrams. Use free run triggering for continuous monitoring, or select the "Failed Packets Only" trigger to capture intermittent faults within the EUT. Two markers plus print and file saving features optimize traces for archiving or inclusion in reports.



DH1 Frequency Deviation Trace

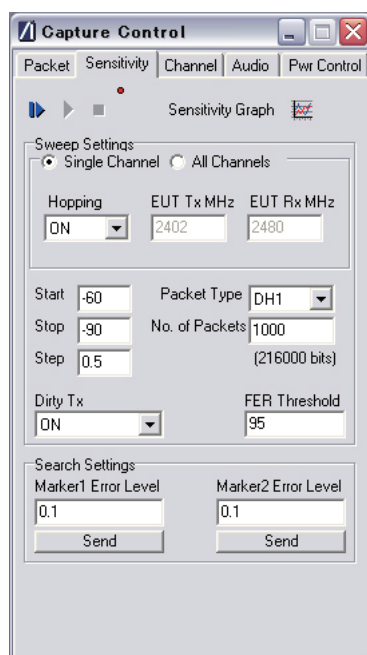
Color coding in trace identifies preamble, access code, header, payload, and CRC.



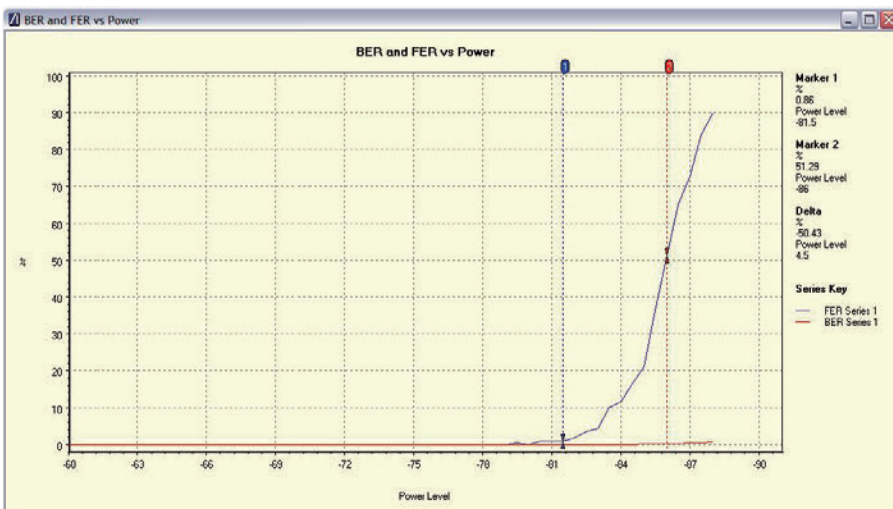
8DPSK Constellation Diagram

Displays all payload symbols or individual 50 μ s blocks.

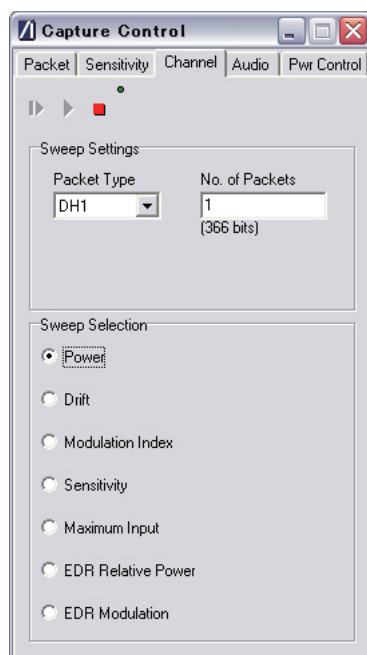
Sensitivity Sweeps Simplified



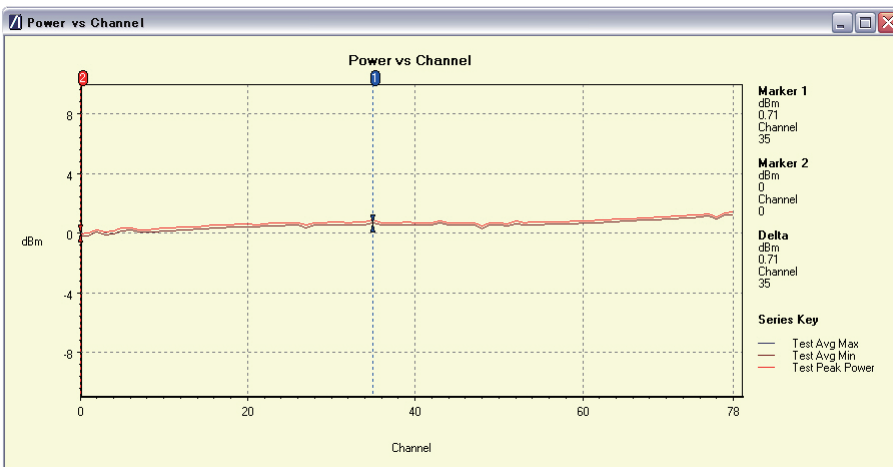
Select the [Sensitivity] tab to analyze the EUT receiver sensitivity performance in detail. Select between EUT sensitivity sweeps with hopping ON or selected individual channels with hopping OFF. Full EUT sensitivity on each channel is automated, reducing test time to a minimum. Both Frame Error and Bit Error Rates are displayed.



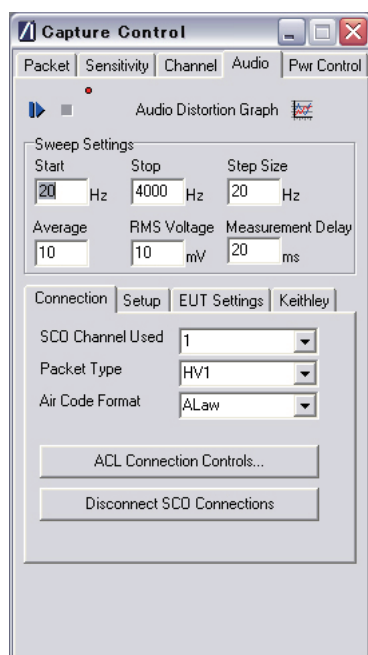
Receiver sensitivity search with traces for FER and BER.



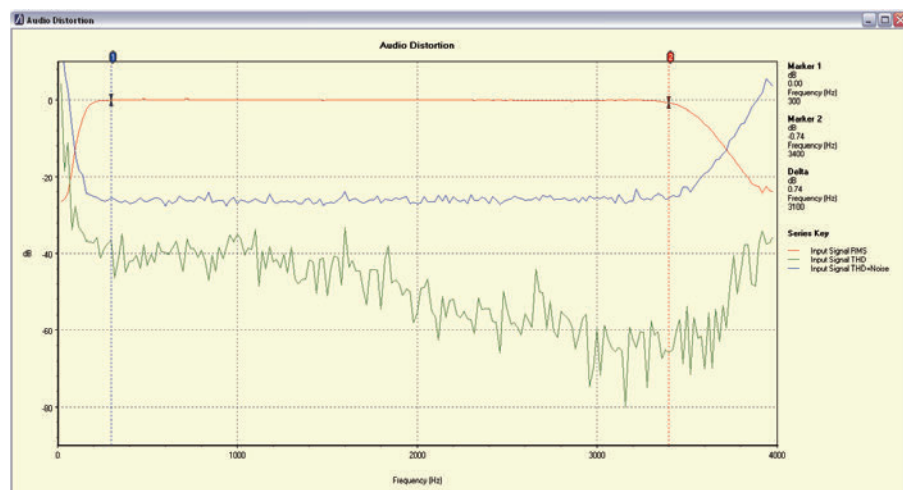
Click the [Channel] tab to characterize the EUT performance on each of the 79 Bluetooth channels. This test suite verifies that all channels are performing to specification and isolates faults that may not appear in routine testing. Maximum and minimum average packet power levels as well as peak symbol power are displayed for each frequency.



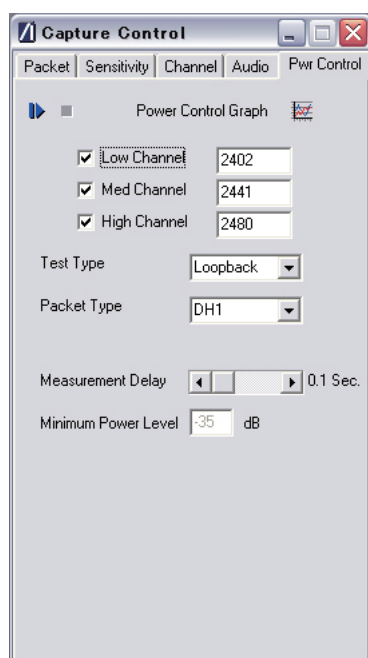
EUT GFSK output power on all channels.



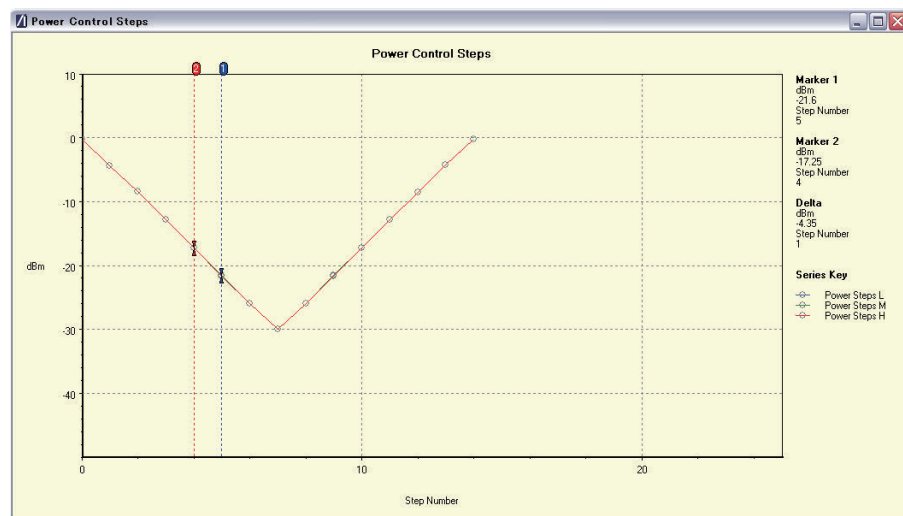
Use the [Audio] tab to quickly test the EUT audio frequency response and distortion. BlueSuite Pro3 controls the MT8852B and a Keithley 2015 audio generator/analyzer to fully automate audio measurements.



Automated SCO frequency response and distortion traces.



Select the [Pwr Control] tab to view the power ramping characteristics of EUTs supporting power control.



EUT power control showing individual step powers and sizes.

Generate and Run a Test Script



Open the [Script Control] dialog to define and execute test scripts on the MT8852B and create test reports for archiving and analysis. The resultant test reports are clearly formatted and form the basis of test records for EUTs in development.

Script Control

Script 5

Send

Read

Default

☐ Stop test on first fail

Capture Results

☒ Output Power

☒ Single Sensitivity

☒ Power Control

☒ Multi Sensitivity

☒ Init Carrier

☒ Modulation Index

☒ Carrier Drift

☒ Max Input Power

☒ Relative Transmit Power

☒ EDR Sensitivity

☒ Carrier Frequency Stability and Modulation Accuracy

☒ EDR BER Floor

☒ Differential Phase Encoding

☒ EDR Maximum Input Power

Conditions

Limits

No. of Packets

10

Hopping

ON

Hopping Mode

Defined

Test Type

Loopback

Packet Type

Longest

☒ Low

2402

MHz

2480

MHz

☒ Medium

2441

MHz

2402

MHz

☒ High

2480

MHz

2402

MHz

Show Channel Numbers

Default

[Script Control] for definition and execution of test scripts.

BlueSuite Test Report

Print

Save

Anritsu

BlueSuite Pro3 Test Report

MT8852B Serial Number: 6K00000031

Date: 2006/11/16

EUT Bluetooth Address: 0001 A40001 F6

Time: 15:47:33

Overall Result: PASS

TRM/GA/01/G (Output Power)

Packet Length Tested: DH5

Hopping ON	Low	Med	High	Limits
Average Power	-0.3 dBm	0.46 dBm	1.17 dBm	
Max Power	-0.28 dBm	0.47 dBm	1.19 dBm	<20 dBm
Min Power	-0.31 dBm	0.45 dBm	1.16 dBm	<-6 dBm
Peak Power	-0.02 dBm	0.73 dBm	1.41 dBm	<23 dBm
Packets Failed	0	0	0	
Packets Tested	10	10	10	
Result	Passed	Passed	Passed	

TRM/GA/02/G (Power Control)

Packet Length Tested: DH1

Hopping OFF	Low	Med	High	Limits
Max Power	-0.2 dBm	0.5 dBm	1.2 dBm	
Min Power	-30 dBm	-28.9 dBm	-28.6 dBm	
Max Power Step	4.5 dB	4.5 dB	4.5 dB	<8 dB
Min Power Step	4 dB	3.8 dB	4 dB	>2 dB
Packets Failed	0	0	0	
Packets Tested	14	14	14	
Result	Passed	Passed	Passed	

Automatically generated test report.

Ordering Information

Please specify the model/order number, name and quantity when ordering.
The names listed in the chart below are Order Names. The actual name of the item may differ from the Order Name.

Model No.	Name
MX885201B	BlueSuite Pro3
MX885201B-301	Upgrade from BlueSuite Pro2 to BlueSuite Pro3

The *Bluetooth*® word mark and logos are registered trademarks owned by Bluetooth SIG, Inc. and any use of such marks by Anritsu is under license.

Other trademarks and trade names are those of their respective owners.

Data subject to change without notice.



Specifications are subject to change without notice.

• United States

Anritsu Americas Sales Company

450 Century Parkway, Suite 190, Allen, TX 75013 U.S.A.
Phone: +1-800-Anritsu (1-800-267-4878)

• Canada

Anritsu Electronics Ltd.

700 Silver Seven Road, Suite 120, Kanata,
Ontario K2V 1C3, Canada
Phone: +1-613-591-2003
Fax: +1-613-591-1006

• Brazil

Anritsu Eletronica Ltda.

Praça Amadeu Amaral, 27 - 1 Andar
01327-010 - Bela Vista - Sao Paulo - SP, Brazil
Phone: +55-11-3283-2511
Fax: +55-11-3288-6940

• Mexico

Anritsu Company, S.A. de C.V.

Blvd Miguel de Cervantes Saavedra #169 Piso 1, Col. Granada
Mexico, Ciudad de Mexico, 11520, MEXICO
Phone: +52-55-4169-7104

• United Kingdom

Anritsu EMEA Ltd.

200 Capability Green, Luton, Bedfordshire, LU1 3LU, U.K.
Phone: +44-1582-433200
Fax: +44-1582-731303

• France

Anritsu S.A.

12 avenue du Québec, Immeuble Goyave,
91140 VILLEBON SUR YVETTE, France
Phone: +33-1-60-92-15-50

• Germany

Anritsu GmbH

Nemetschek Haus, Konrad-Zuse-Platz 1,
81829 München, Germany
Phone: +49-89-442308-0
Fax: +49-89-442308-55

• Italy

Anritsu S.r.l.

Spaces Eur Arte, Viale dell'Arte 25, 00144 Roma, Italy
Phone: +39-6-509-9711

• Sweden

Anritsu AB

Kistagången 20 B, 2 tr, 164 40 Kista, Sweden
Phone: +46-8-534-707-00

• Finland

Anritsu AB

Technopolis Aviapolis, Teknobulevardi 3-5 (D208.5),
FI-01530 Vantaa, Finland
Phone: +358-20-741-8100

• Denmark

Anritsu A/S

c/o Regus Winghouse, Ørestads Boulevard 73, 4th floor,
2300 Copenhagen S, Denmark
Phone: +45-7211-2200

• Russia

Anritsu EMEA Ltd.

Representation Office in Russia

Tverskaya str. 16/2, bld. 1, 7th floor., Moscow, 125009, Russia
Phone: +7-495-363-1694
Fax: +7-495-935-8962

• Spain

Anritsu EMEA Ltd.

Representation Office in Spain

Paseo de la Castellana, 141. Planta 5, Edificio Cuzco IV
28046, Madrid, Spain
Phone: +34-91-572-6761

• Austria

Anritsu EMEA GmbH

Am Belvedere 10, A-1100 Vienna, Austria
Phone: +43-(0)1-717-28-710

• United Arab Emirates

Anritsu EMEA Ltd.

Anritsu A/S

Office No. 164, Building 17, Dubai Internet City
P. O. Box - 501901, Dubai, United Arab Emirates
Phone: +971-4-3758479

• India

Anritsu India Private Limited

6th Floor, Indique ETA, No.38/4, Adjacent to EMC2,
Doddanekundi, Outer Ring Road, Bengaluru - 560048, India
Phone: +91-80-6728-1300
Fax: +91-80-6728-1301

• Singapore

Anritsu Pte. Ltd.

11 Chang Charn Road, #04-01, Shriro House, Singapore 159640
Phone: +65-6282-2400
Fax: +65-6282-2533

• Vietnam

Anritsu Company Limited

16th Floor, Peakview Tower, 36 Hoang Cau Street, O Cho Dua Ward,
Dong Da District, Hanoi, Vietnam
Phone: +84-24-3201-2730

• P.R. China (Shanghai)

Anritsu (China) Co., Ltd.

Room 2701-2705, Tower A, New Caohejing International
Business Center No. 391 Gui Ping Road Shanghai, 200233, P.R. China
Phone: +86-21-6237-0898
Fax: +86-21-6237-0899

• P.R. China (Hong Kong)

Anritsu Company Ltd.

Unit 1006-7, 10/F., Greenfield Tower, Concordia Plaza,
No. 1 Science Museum Road, Tsim Sha Tsui East,
Kowloon, Hong Kong, P.R. China
Phone: +852-2301-4980
Fax: +852-2301-3545

• Japan

Anritsu Corporation

8-5, Tamura-cho, Atsugi-shi, Kanagawa, 243-0016 Japan
Phone: +81-46-296-6509
Fax: +81-46-225-8352

• Korea

Anritsu Corporation, Ltd.

5FL, 235 Pangyocho-ro, Bundang-gu, Seongnam-si,
Gyeonggi-do, 13494 Korea
Phone: +82-31-696-7750
Fax: +82-31-696-7751

• Australia

Anritsu Pty. Ltd.

Unit 20, 21-35 Ricketts Road, Mount Waverley, Victoria 3149, Australia
Phone: +61-3-9558-8177
Fax: +61-3-9558-8255

• Taiwan

Anritsu Company Inc.

7F, No. 316, Sec. 1, NeiHu Rd., Taipei 114, Taiwan
Phone: +886-2-8751-1816
Fax: +886-2-8751-1817