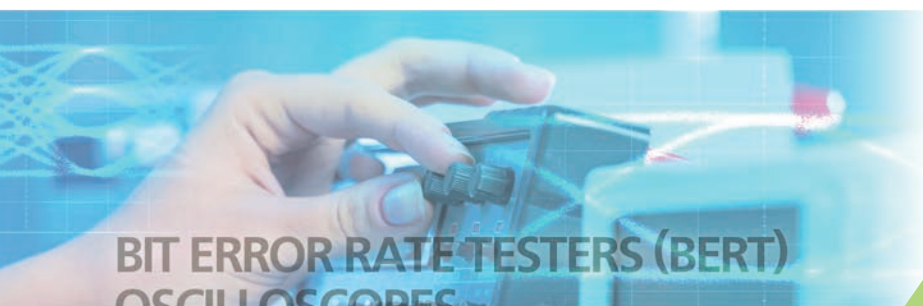




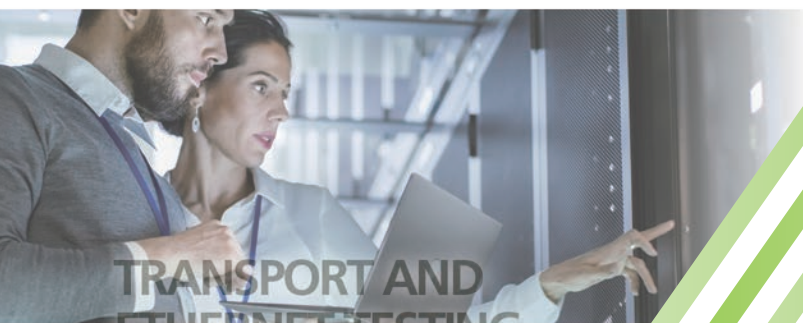
Optical & High-speed & Transport Testing Solutions



OPTICAL MEASURING INSTRUMENTS



BIT ERROR RATE TESTERS (BERT)
OSCILLOSCOPES



TRANSPORT AND
ETHERNET TESTING

Network Master Pro



Network Master Pro

+ fiberVisualizer



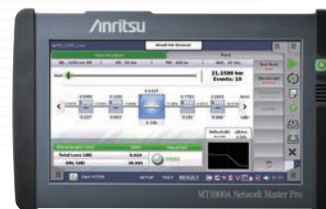
Mainframe MT1000A

OTDR Module MU100020A/MU100021A/MU100022A/MU100023A

1310 nm/1550 nm SMF, 1310/1550/850/1300 nm SMF/MMF, 1310/1550/1625 nm SMF, 1310/1550/1650 nm SMF

Mobile Network I&M

- All-in-one OTDR, light source, optical power meter visual light source and CPRI/OBSAI with MU100010A1/MU100011A
- Filtered 1650 nm port for maintenance
- Remote control over cloud and automated test without external PC
- Optical connector inspection with IEC 61300-3-35 pass/fail
- Graphical summary and pass/fail evaluation using Fiber Visualizer function
- Intuitive touch-screen operation



The OTDR module lineup includes the MU100021A for OTDR measurements of both SM and MM fibers in high demand by the mobile network I&M, plus the MU100020A/MU100022A/MU100023A for OTDR measurements of SM fiber used by PON networks and long-range measurements in Core/Metro networks.



<https://www.anritsu.com/test-measurement/products/mt1000a>

ACCESS Master™

+ fiberVisualizer

MT9085 series 850 nm/1300 nm (MM), 1310/1490/1550/1625/1650 nm (SM)

All-in-One Solution for Optical Fiber Construction and Maintenance of Core, Metro and Access Networks

- 8-inch LCD with easy visibility even in direct sunlight
- Better work efficiency with synergy of LCD touchscreen, rotary knob, and dedicated hard keys
- Easy-to-Use Fiber Visualizer function for simple fiber path analysis

The MT9085 series is a compact handheld all-in-one tester for performing optical pulse tests, optical loss/power measurements, and optical fiber end-face inspections. It has a wide variety of applications, ranging from installation and maintenance (I&M) of trunk fibers (Core, Metro, Mobile Fronthaul, Mobile Backhaul) to troubleshooting Access networks, such as breaks in drop cables.



<https://www.anritsu.com/test-measurement/products/mt9085series>

Network Master™



Network Master

+ fiberVisualizer

Mainframe MT9090A

μOTDR Module™ MU909014/MU909015

1310/1490/1550 nm plus filtered 1650 nm or 1625 nm

Field Optical Testing Redefined

- High-performance OTDR in a pocket-size package with unique battery operation
- Tri-wavelength OTDR for both installation and maintenance 1310/1490/1550 nm plus filtered 1650 nm or 1625 nm
- Built-in PON power meter, loss test set and light source function
- "Fiber Visualizer" mode simplifies operation, no OTDR knowledge needed
- Bluetooth, WLAN and Ethernet connectivity



The MU909014/15 series for the MT9090A from Anritsu finally addresses this need by providing all of the features and performance required for installation and maintenance of optical fibers in a compact.

The MT9090A represents an unmatched level of value and ease of use, while not compromising performance. Data sampling of five centimeters, dead zones of less than 0.8-meter and dynamic range up to 38 dB ensure accurate and complete fiber evaluation of any network type – premise to access, metro to core...including PON-based FTTx networks featuring up to a 1 × 64 split.



<https://www.anritsu.com/en-us/test-measurement/products/mu909014c-14c6-15c-15c6>

Optical Loss Tester/Light Source/Optical Power Meter

CMA5 series 850 nm/1300 nm (MM), 1310/1490/1550/1625 nm (SM)

For Optical Fiber Installation and Maintenance

- Built-in light source and power meter (Optical Loss Tester)
- Two wavelengths at one port (Light Source)
- Level measurement up to +23 dBm (Optical Power Meter)

The compact and durable design of the CMA5 series make these instruments the ideal combination of light source and optical power meter for measuring optical power when installing and servicing optical fiber cables.



<https://www.anritsu.com/test-measurement/products/cma5>

Video Inspection Probe

Autofocus Video Inspection Probe G0382A

Video Inspection Probe G0306C

Optical Connector End Face Inspection

- Fully automated one-button operation (G0382A)
- Supported pass/fail analysis with the IEC61300-3-35 standard
- Wide range of adaptors available

The Video Inspection Probe (VIP) application for Anritsu field testing platforms gives operators a safe, easy way to analyze and document connector conditions.



<https://www.anritsu.com/test-measurement/optical/vip>

Optical Spectrum Analyzer

MS9740B 600 nm to 1750 nm

Reduces Measurement Time and Improves Production Efficiency

- Wavelength sweeping time <0.35 s
- Dedicated applications for evaluating active optical devices
- Excellent cost performance
- Dynamic range >58 dB (at ± 0.4 nm from peak wavelength)
- 30 pm minimum resolution
- Support pulsed light measurement

The MS9740B reduce the measurement processing times by up to half compared to the earlier model while assuring high performance and complete test menus brings higher-efficiency inspection of active optical devices.



<https://www.anritsu.com/test-measurement/products/ms9740b>

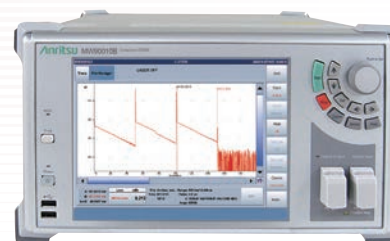
Coherent OTDR

MW90010B

Measures Submarine Cables up to 20,000 km Long

- Fault detection with 10 m distance resolution
- Compact and lightweight all-in-one design for on-site portability
320 (W) × 177 (H) × 451 (D) mm, <10 kg
- Simple and easy touch-panel operation for easy first-time use by any operator
- Wide dynamic range supporting fault detection and troubleshooting of submarine cables with repeaters at 80 km or longer intervals

The MW90010B is a measuring instrument for detecting faults in ultra-long optical submarine cables of up to 20,000 km including multiple repeaters (EDFAs).



<https://www.anritsu.com/test-measurement/products/mw90010b>

Signal Quality Analyzer-R



MP1900A

Support 400 GbE/800 GbE and PCIe Gen4/5/6.

All-in-One Support for Evaluating Next-Generation NRZ/PAM4 Network Interfaces and High-Speed Serial Buses

- All-in-one support for both high-speed Ethernet and PCI Express interface tests
- Easily configured and easy-to-use all-in-one 64-GBaud PAM4 BER measurement system supporting FEC analysis
- Receiver tests are supported by the built-in Protocol Awareness PCIe Link Training and LTSSM analysis functions
- High-reproducibility measurements due to high waveform quality and high input sensitivity
- Supports true signal integrity analysis, such as bit error rate measurements, Jitter Tolerance tests, etc.

The MP1900A is a high-performance BERT with excellent expandability for supporting Physical layer evaluations of these high-speed interfaces. The all-in-one design is ideal for early stage R&D evaluations of all interfaces covering next-generation Ethernet networks to bus interconnects.



<https://www.anritsu.com/test-measurement/products/mp1900a>



BERTWave™



MP2110A

For 10G to 800G Multi-channel Optical Module/Device R&D and Manufacturing

- Sampling oscilloscope and BERT for up to 4ch installed one unit
- Sampling oscilloscope supports analysis for both NRZ and PAM4 signals with high-speed, low-noise, and built-in CRU

The BERTWave MP2110A is an all-in-one instrument with built-in 4 channel Sampling Oscilloscope and BERT designed for manufacturing inspection of 10G/25G/100G/200G/400G/800G optical modules. The MP2110A will improve optical module production efficiency and reduce manufacturing costs.



<https://www.anritsu.com/test-measurement/products/mp2110a>



Network Master Pro



Mainframe MT1000A

10G Multirate Module MU100010A1

100G Multirate Module MU100011A

High Performance GNSS Disciplined Oscillator MU100090B

All-in-One Transport Tester for Metro and Backhaul Network Installation and Maintenance

- Supports testing from 10 Mbps to 100 Gbps
- Remote operation & scripting
- Remote control over cloud and automated tests for standalone
- Compact, lightweight design for maximum field portability

The modular design of the Network Master Pro MT1000A platform makes it easy to support I&M for different network configurations. Combining it with the 10G Multirate Module MU100010A1 offers the necessary functions for I&M of networks at speeds from 10 Mbps to 10 Gbps. Combining with the 100G Multirate Module MU100011A, it supports more interface standards than any other handheld transport tester on the market such as CFP4/QSFP28, QSFP+, SFP28 (25GbE), SFP+/SFP and RJ45. MU100090B enables easy Pass/Fail evaluations when installing and commissioning time and phase synchronous networks.



<https://www.anritsu.com/test-measurement/products/mt1000a>

Network Master Pro



Mainframe MT1040A

400G (QSFP-DD) Multirate Module MU104014A

400G (OSFP) Multirate Module MU104015A

100G Multirate Module MU104011A

One unit supporting 400G Ethernet I&M

- Supports network speeds from 10 Mbps to 400 Gbps
- Continuous and quantitative 400G FEC measurements
- Remote control over cloud and automated tests without external PC
- Compact and lightweight for easy portability

The MU104014A support QSFP-DD module and a dual-port interface for speeds from 10M to 100G for evaluating network equipment. The MU104015A supports OSFP modules for evaluating 400G. The MU104011A has a dual-port interface for speeds of 100G or less. In addition, by combining 2 measurement modules, MT1040A can test 2-port 400G Ethernet and also perform equipment evaluation tests.



<https://www.anritsu.com/test-measurement/products/mt1040a>

Site Over Remote Access



Site Over Remote Access MX109020A

Site Over Remote Access Connect MT1040A-011

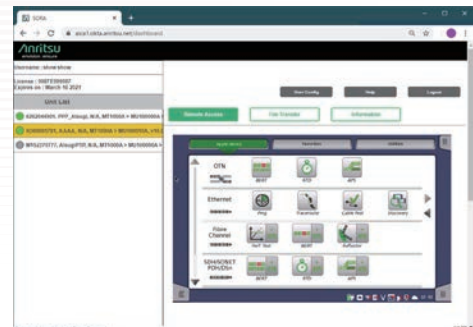
Site Over Remote Access Connect MT1000A-011

Remote control via Cloud

- Supports remote control of MT1040A/MT1000A using general Web browser
- Supports simultaneous control of multiple MT1040A/MT1000A units
- Supports direct access using web browser to files saved in measuring instrument and copying of settings files saved at operation side to measuring instrument

The MX109020A software is the license to operate either the MT1040A or MT1000A via a Web browser.

Using the MX109020A installed in a PC supports remote operation of multiple MT1040A/MT1000A from a one PC. Additionally, when problems occur, direct remote operation of the measuring instrument by a skilled technician helps efficient troubleshooting.



<https://www.anritsu.com/test-measurement/solutions/mt1000a-sora/index>

Mainframe MT9090A

Gigabit Ethernet Module MU909060A1/A2/A3

Handheld Gigabit Ethernet Tester

- Lightweight and compact unit (approx. 800 g)
- Testing time reduced by the "Test Automator" creating a series of tests with pass/fail
- Automated ITU-T Y.1564 and RFC 2544 testing including bidirectional path analysis service
- Disruption time measurement ideal for testing VoIP and IPTV applications top talkers, network attacks and finding the route course of an issue by "Channel Stats"



The portable and easy-to-use MU909060A offers versatile measurement functions supports deployments and maintenances of Carrier Class Ethernet and 5G mobile backhaul networks.



<https://www.anritsu.com/test-measurement/products/MU909060A>



Specifications are subject to change without notice.

- **United States**

- Anritsu Americas Sales Company**

- 450 Century Parkway, Suite 190, Allen, TX 75013 U.S.A.
Phone: +1-800-Anritsu (1-800-267-4878)

- **Canada**

- Anritsu Electronics Ltd.**

- Americas Sales and Support**

- 450 Century Parkway, Suite 190, Allen, TX 75013 U.S.A.
Phone: +1-800-Anritsu (1-800-267-4878)

- **Brazil**

- Anritsu Eletronica Ltda.**

- Praça Amadeu Amaral, 27 - 1 Andar
01327-010 - Bela Vista - Sao Paulo - SP, Brazil
Phone: +55-11-3283-2511
Fax: +55-11-3288-6940

- **Mexico**

- Anritsu Company, S.A. de C.V.**

- Blvd Miguel de Cervantes Saavedra #169 Piso 1, Col. Granada
Mexico, Ciudad de Mexico, 11520, MEXICO
Phone: +52-55-4169-7104

- **United Kingdom**

- Anritsu EMEA Ltd.**

- 200 Capability Green, Luton, Bedfordshire, LU1 3LU, U.K.
Phone: +44-1582-433200
Fax: +44-1582-731303

- **France**

- Anritsu S.A.**

- 12 avenue du Québec, Immeuble Goyave,
91140 VILLEBON SUR YVETTE, France
Phone: +33-1-60-92-15-50

- **Germany**

- Anritsu GmbH**

- Nemetschek Haus, Konrad-Zuse-Platz 1,
81829 München, Germany
Phone: +49-89-442308-0
Fax: +49-89-442308-55

- **Italy**

- Anritsu S.r.l.**

- Spaces Eur Arte, Viale dell'Arte 25, 00144 Roma, Italy
Phone: +39-6-509-9711

- **Sweden**

- Anritsu AB**

- Kistagången 20 B, 2 tr, 164 40 Kista, Sweden
Phone: +46-8-534-707-00

- **Finland**

- Anritsu AB**

- Technopolis Aviapolis, Teknobulevardi 3-5 (D208.5),
FI-01530 Vantaa, Finland
Phone: +358-20-741-8100

- **Denmark**

- Anritsu A/S**

- c/o Regus Winghouse, Ørestads Boulevard 73, 4th floor,
2300 Copenhagen S, Denmark
Phone: +45-7211-2200

- **Spain**

- Anritsu EMEA Ltd.**

- Representation Office in Spain**

- Paseo de la Castellana, 141. Planta 5, Edificio Cuzco IV
28046, Madrid, Spain
Phone: +34-91-572-6761

- **Austria**

- Anritsu EMEA GmbH**

- Am Belvedere 10, A-1100 Vienna, Austria
Phone: +43-(0)1-717-28-710

- **United Arab Emirates**

- Anritsu EMEA Ltd.**

- Anritsu A/S**

- Office No. 164, Building 17, Dubai Internet City
P. O. Box - 501901, Dubai, United Arab Emirates
Phone: +971-4-3758479

- **India**

- Anritsu India Private Limited**

- 6th Floor, Indique ETA, No.38/4, Adjacent to EMC2,
Doddanekundi, Outer Ring Road, Bengaluru - 560048, India
Phone: +91-80-6728-1300
Fax: +91-80-6728-1301

- **Singapore**

- Anritsu Pte. Ltd.**

- 1 Jalan Kilang Timor, #07-04/06 Pacific Tech Centre
Singapore 159303
Phone: +65-6282-2400
Fax: +65-6282-2533

- **Vietnam**

- Anritsu Company Limited**

- 16th Floor, Peakview Tower, 36 Hoang Cau Street, O Cho Dua Ward,
Dong Da District, Hanoi, Vietnam
Phone: +84-24-3201-2730

- **P.R. China (Shanghai)**

- Anritsu (China) Co., Ltd.**

- Room 2701-2705, Tower A, New Caohejing International
Business Center No. 391 Gui Ping Road Shanghai, 200233, P.R. China
Phone: +86-21-6237-0898
Fax: +86-21-6237-0899

- **P.R. China (Hong Kong)**

- Anritsu Company Ltd.**

- Unit 1006-7, 10/F., Greenfield Tower, Concordia Plaza,
No. 1 Science Museum Road, Tsim Sha Tsui East,
Kowloon, Hong Kong, P.R. China
Phone: +852-2301-4980
Fax: +852-2301-3545

- **Japan**

- Anritsu Corporation**

- 8-5, Tamura-cho, Atsugi-shi, Kanagawa, 243-0016 Japan
Phone: +81-46-296-6509
Fax: +81-46-225-8352

- **Korea**

- Anritsu Corporation, Ltd.**

- 5FL, 235 Pangyoeyeok-ro, Bundang-gu, Seongnam-si,
Gyeonggi-do, 13494 Korea
Phone: +82-31-696-7750
Fax: +82-31-696-7751

- **Australia**

- Anritsu Pty. Ltd.**

- Unit 20, 21-35 Ricketts Road, Mount Waverley, Victoria 3149, Australia
Phone: +61-3-9558-8177
Fax: +61-3-9558-8255

- **Taiwan**

- Anritsu Company Inc.**

- 7F, No. 316, Sec. 1, NeiHu Rd., Taipei 114, Taiwan
Phone: +886-2-8751-1816
Fax: +886-2-8751-1817