

Traffic Setting Tool

MD1230B, MP1590B

Data Quality Analyzer, Network Performance Tester

*Even Easier Test Traffic Creation
with Improved GUI
(MD1230B/MP1590B V9.3 upgrade)*



MD1230B Data Quality Analyzer



MP1590B Network Performance Tester

Features

Efficient Multi-Port IP Network Equipment Evaluation

- Batch parameter setting for test ports
- Efficient editing using copy, paste, increment and decrement
- Easy multi-traffic generation at specified rate
- Saving and reading settings file

1. Outline

Evaluation of multi-port systems, such as high-density switches and PON systems, is becoming increasingly common, increasing setting time as port density increases. This Traffic Setting Tool for the MD1230B/MP1590B reduces the number of setting and traffic-creation tasks, cutting costs for evaluating multi-port Ethernet environments.

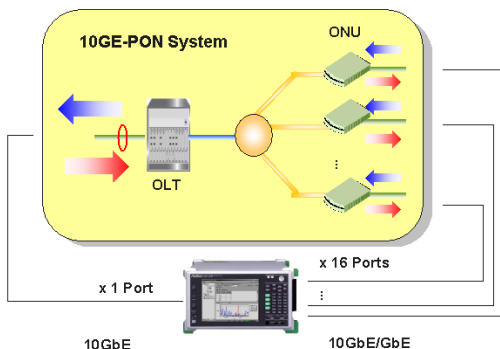


Figure 1: End-to-end multi-port performance evaluation (10GE-PON system)

2. Features

➤ Batch parameter setting for test ports

The MAC address, IP address, Netmask, Gateway, ARP setting, PING setting, and PRBS pattern setting for each test port can be set at a list screen. Setting is fast and simple because there is no need to open a setting screen for each port.

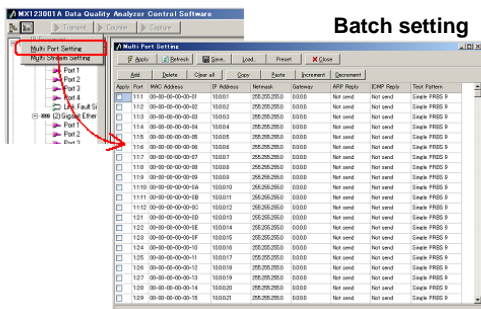


Figure 2: Multi-port batch setting

➤ Efficient editing using copy, paste, increment and decrement

The copy, paste, increment, and decrement functions make it easy to edit parameters. Each address is set automatically to unique values, supporting quick setting according to the test environment.

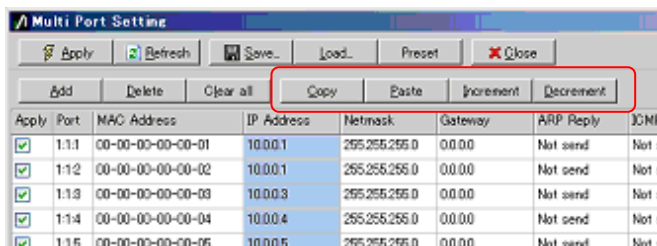


Figure 3: Parameter editing

Batch-copying settings to multi-ports cuts editing work and time.

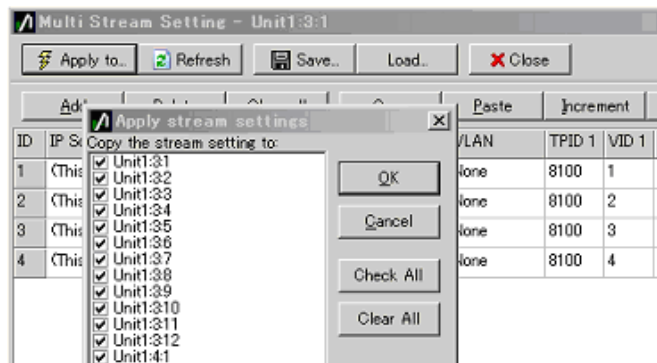


Figure 4: Multi-port batch copying

➤ Easy multi-traffic generation at specified rate

Multi-traffic can be generated from each port at a set rate. The frame gap is calculated automatically for each port, supporting responsive changes according to each traffic load.

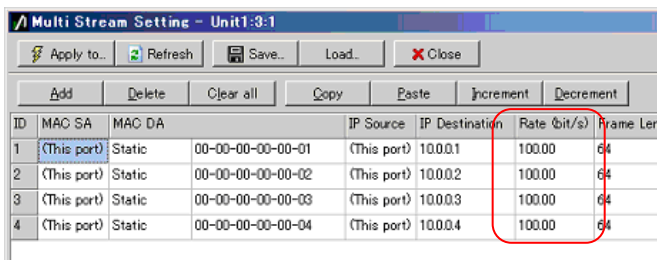


Figure 5: Traffic rate input

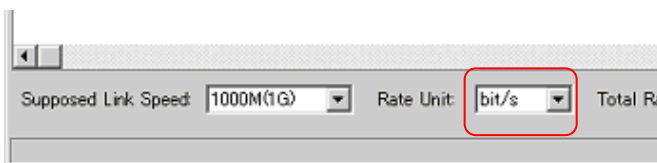


Figure 6: Rate unit switch (% , fps, bit/s, Kbit/s, Mbit/s)

➤ Saving and reading settings file

Settings can be saved and read as csv text files. Creating easy-to-read test-case files makes multiple testing and repeating the same test over easy.

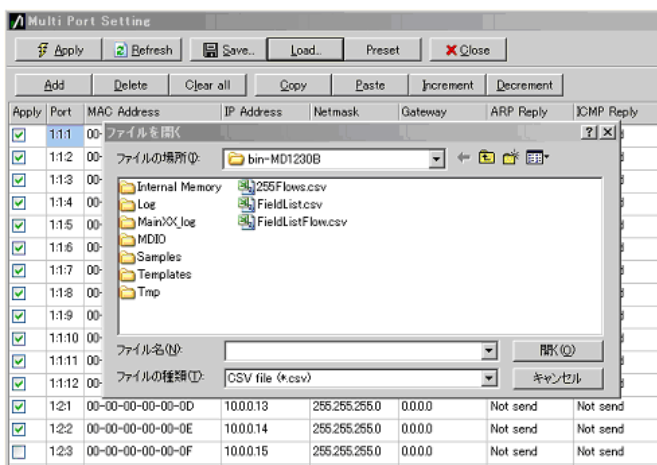


Figure 7: Saving and reading csv text file

3. Configurations

The Traffic Setting Tool is a standard function of the MD1230B/MP1590B (V9.3 and newer).

The latest software is downloaded from Anritsu web site.

This tool supports following modules:

- MU120131A: 10/100/1000 M Ethernet Module
- MU120132A: Gigabit Ethernet Module
- MU120138A: 10 Gigabit Ethernet Module

It is also supported by the MX123001A Data Quality Analyzer Control Software and MX159001B Network Performance Tester Control Software.

Configuration	Main Frames: MD1230B,MP1590B Plug-in Modules: MU120131A, MU120132A, MU120138A Software Version: MD1230B: V9.3 or newer, MP1590B: V9.3 or newer
Traffic Setting Tool	Multi-Port Setting: Batch setting: Up to 60 ports Setting parameters: MAC Address, IP Address, Netmask, Gateway, ARP Setting, PING Setting, PRBS Pattern (except MU120121A /122A) Editing functions: Copy, Paste, Increment, Decrement Multi Stream Setting: Max 256 streams per port Setting parameters: Ethernet Destination Type(Static/Gateway), Ethernet Destination Address, IPv4 Destination Address, Rate, Frame Length, VLAN(max. 2 tags, TPID, VID, Priority), Data Field Test Frame Type(PRBS/FlowID), Assumed Link Speed(10M,100M,1000M(1G),10G), Rate Unit(% ,fps,bit/s,kbit/s,Mbit/s), Transmitted Time Editing functions: Copy, Paste, Increment, Decrement Copy to other multiple ports Save and read settings to/from text file (csv)

4. Ordering

➤ MD1230B	
MD1230B	Data Quality Analyzer
MU120131A	10/100/1000M Ethernet Module
MU120132A	Gigabit Ethernet Module
MU120138A	10 Gigabit Ethernet Module
MX123001A	Data Quality Analyzer Control Software
➤ MP1590B	
MP1590B	Network Performance Tester
MU120131A	10/100/1000M Ethernet Module
MU120132A	Gigabit Ethernet Module
MU120138A	10 Gigabit Ethernet Module
MX123001A	Network Performance Tester Control Software