

Supporting 100 GbE Optical Module Deployment

Network Master Flex MT1100A

40/100G Advanced Module MU110013A

CFP2-CFP4 Adapter J1665A

CFP2-QSFP28 Adapter J1686B



Size Reduction and Troubleshooting of 100G Optical Modules

The increase in 100G networks is driving development of smaller optical modules supporting higher port densities for 100G transport equipment. Fault finding and troubleshooting these modules is a key part of integrating these optical modules into today's equipment.

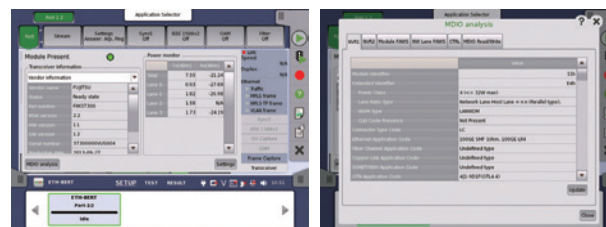
40/100G Advanced Module MU110013A



New Optical Module I/F Standard

Using either the J1665A* or J1686B adaptor with the MT1100A and MU110013A combination supports evaluation of CFP4 and QSFP28 optical modules respectively. These adaptors can help troubleshoot faults by checking the 100G data communications, and control of optical modules using MDIO/I2C. In addition, evaluation of new optical modules helps with configuration of fault-resistant networks.

*: J1665A does not have a locking catch, cautious should be observed when removing the optical fiber or test module from the adaptor



Transceiver Overview

Detailed Transceiver status and control

■ Specifications

Model No.	J1665A		J1686B
Name	CFP2-CFP4 Adapter		CFP2-QSFP28 Adapter
Supported Bit Rates	100 Gbps		
Interface	Connector*1	Host Side: CFP2 Plug Connector*2 CFP4 Side: CFP4 Host Connector	Host Side: CFP2 Plug Connector*2 QSFP28 Side: QSFP28 Host Connector
	Insertion Loss (S ₂₁)*3	-8.5 dB @14 GHz (max.)	-12.5 dB @14 GHz (max.)
	Return Loss (S ₁₁) SMPM Side*3	-5 dB @14 GHz (max.)	-4 dB @14 GHz (max.)
	Differential Impedance	100Ω ±15%	
	Inter-pair Skew	4 ps (max.)	—
Operating Temperature and Humidity Range	0° to +40°C, ≤80% (No condensation)		
Storage Temperature and Humidity Range	-20° to +60°C, ≤80% (No condensation)		
Dimensions and Mass	106.5 (W) × 41.5 (H) × 14.8 (D) mm (Excluding projections), ≤100 g		

*1: Within MSA standards, contact Anritsu for further details if required.

*2: Supports SR4 and LR4.

*3: Total when mated using CEI-28G-VSR HCB (Host Compliance Board) and MCB (Module Compliance Board).