

Software Package Install Simple Operation Guide

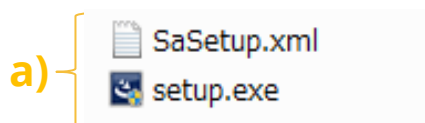
Signal Analyzer MS2830A / MS2840A / MS2850A

Signal Analyzer MS2690A / MS2691A / MS2692A

This guide explains the simple procedure for installing the Software Package* in the Signal Analyzer MS2830A, MS2840A, MS2850A, MS2690A, MS2691A and MS2692A.

*The Software Package is firmware including application software.

- Copy the firmware files (a below) to a folder (b below) on a USB memory stick.



- b) x:\¥Anritsu Corporation¥Signal Analyzer¥Install (x: USB drive letter)

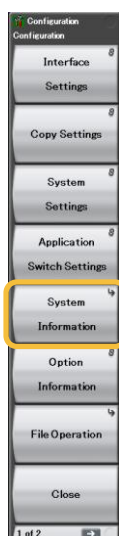
- Insert the above-described USB memory stick into the Signal Analyzer MS2830A, MS2840A, MS2850A, MS2690A, MS2691A and MS2692A and install the Software Package using the procedure described on the following page.

(Supplementary Explanation) Method for confirming installed Software Package version

[Procedure]

- ① Press [System Config].
- ② Press [F5: System Information].
- ③ Press [F2: Software Version View].
- ④ Check "Package Version" at the screen top right

①



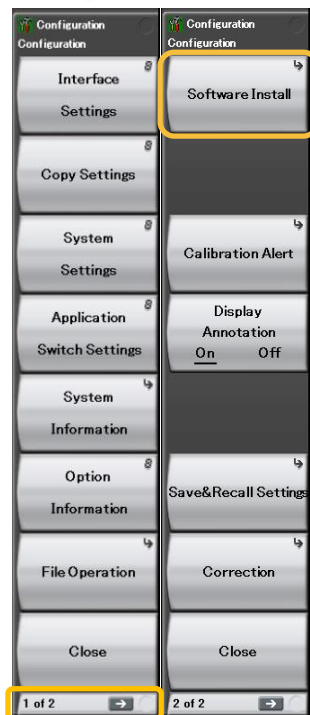
①



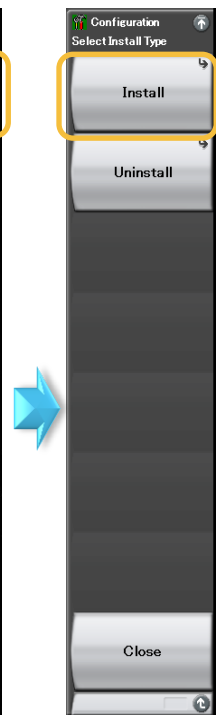
[Procedure]

- ① Press [System Config].
- ② Press [→]* to go to Page 1 (*: button below F8).
- ③ Press [F1: Software Install].
- ④ Press [F1: Install].
- ⑤ Press [F1: Software].
- ⑥ Select (E)* and press [F7: Set] (*: select USB drive letter).
- ⑦ Press [F1: Install].
- ⑧ Select [Yes] and press [Enter]* (*: button under rotary knob).
- ⑨ Firmware installation starts and the unit restarts automatically.
- ⑩ Confirm that the Software Package version has changed by following the supplementary procedure described previously.

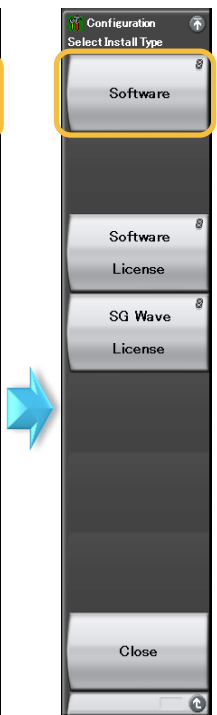
②



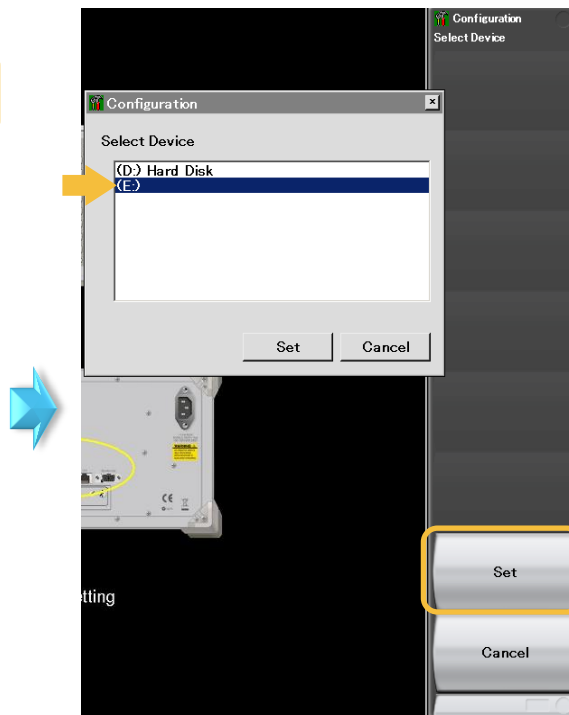
③



④

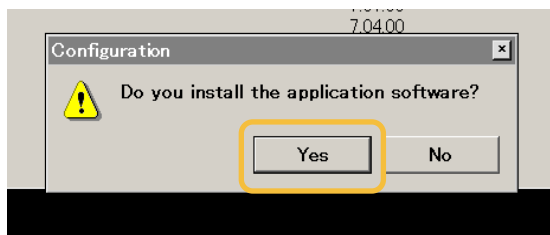


⑤

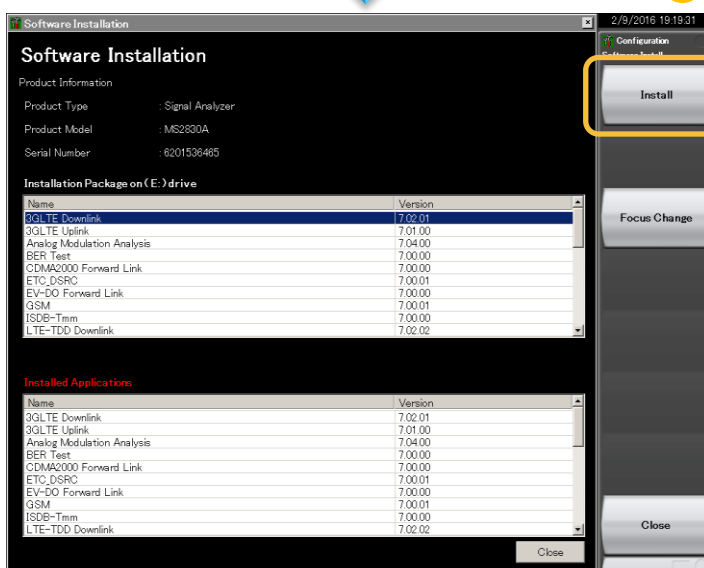


⑥

⑧



⑦



⑨



⑩

Confirm that the Software Package version has changed by following the supplementary procedure described previously.