

BER Measurement Simple Operation Guide (MS2830A-026, MS2840A-026)

Signal Analyzer MS2830A / MS2840A

This guide outlines operation procedures for the BER Measurement Function option for the Signal Analyzer MS2830A and MS2840A.

At actual measurement, it may be necessary to modify the settings in accordance with the specifications of the wireless DUT.

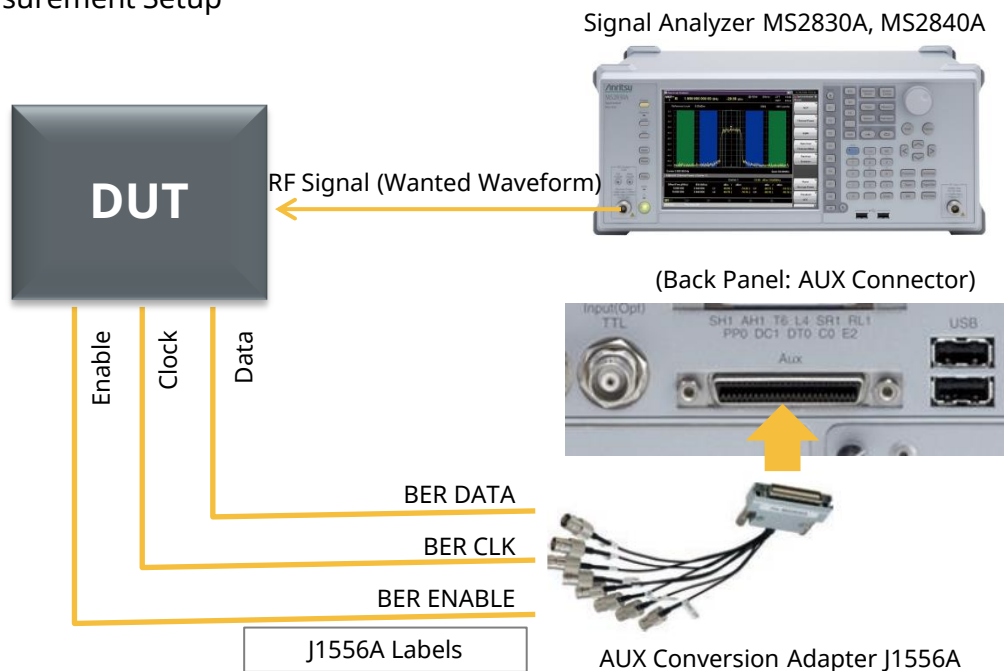
Read the following manuals for details of the functions, settings range and procedures.

MS2830A Signal Analyzer Operation Manual Mainframe Operation

MS2840A Signal Analyzer Operation Manual Mainframe Operation

Chapter 8 BER Measurement Function

□ BER Measurement Setup



①



[Procedure]

- ① Press [Application Switch].
 - ② Enable the BER function by pressing [Fx: BER Test].
- (Page 1)
- ③ Select [F6: Data Type] (Ex. PN9).
 - ④ Select [F7: Measure Mode] (Ex. Continuous).
 - ⑤ Select [F8: Count Mode] (Ex. Data, 1000 bit).
*The BER result is displayed for each set data bit count.

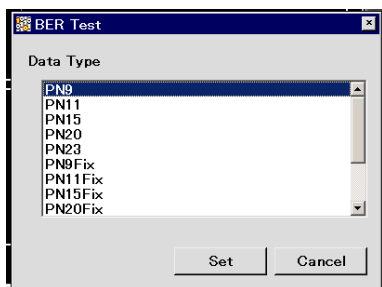
(Page 2)

- ⑥ Press [F1: Resync Condition].
(Ex. Auto Resync = On, Threshold = 200/500 bit, at Sync Loss = Count Clear)
*Set as necessary.
- ⑦ Press [F2: BER Interface]. *See explanatory note.
(Ex. Clock Edge = Rise, Data Polarity = Positive, Enable Active = Disable)

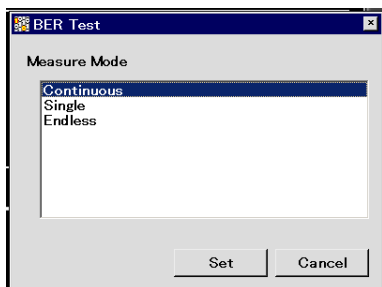
(Page 1)

- ⑧ Press [F1: Measure Start] to start measurement.
- ⑨ Press [F2: Measure Stop] to stop measurement.

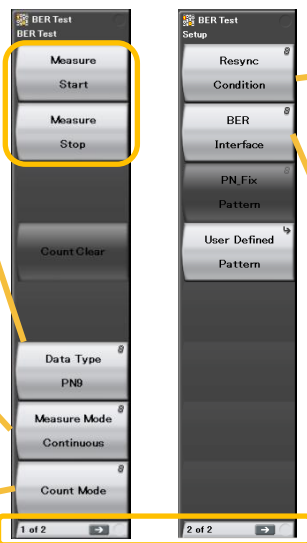
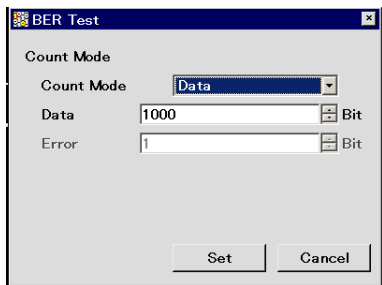
③



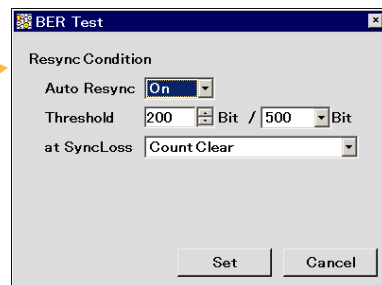
④



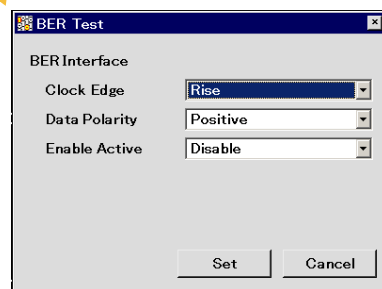
⑤



⑥



⑦



Note: Clock Polarity (See diagram on right.)

When demodulated data is output at the DUT in synchrony with the clock **Falling** edge, the BER measurement is counted at the clock **Rising** edge.

Use an oscilloscope to confirm the data and clock output from the DUT.

