

# PIM Test Reports

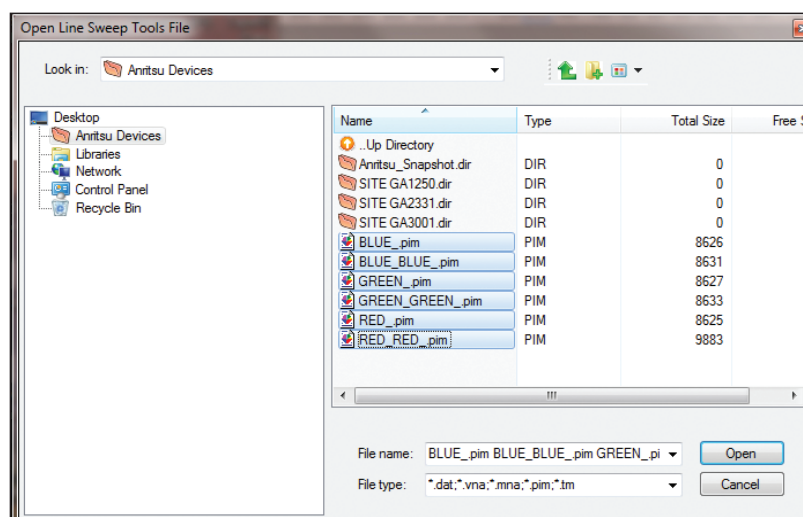
The PIM Master saves each measurement as an individual file. A window appears on the PIM Master screen each time a measurement is saved, providing the opportunity to rename the measurement, create a new directory and/or change the save location. Creating directories and storing measurements from the same site in a common directory is an easy way to keep your data organized and to simplify report generation.

To generate a report, you need to open the measurements using Anritsu's Line Sweep Tools (LST) application. Line Sweep Tools provides a rich assortment of features for adjusting limit lines, adding markers, changing plot titles and changing the plot scale. A copy of LST is available on the Software Tool Box disc provided with each instrument, or can be downloaded for free from the Anritsu website.

<http://www.anritsu.com/en-us/products-solutions/instructional/line-sweep-tools.aspx>

Several options are available for transferring measurements from your PIM Master to the computer that will be used to generate reports. The first involves the use of a USB memory stick. You can either save measurements directly to the memory stick as you generate them, or move the files to the memory stick after you are finished collecting data. Remove the memory stick from the PIM Master and insert it in a USB port of the PC running LST to transfer the files.

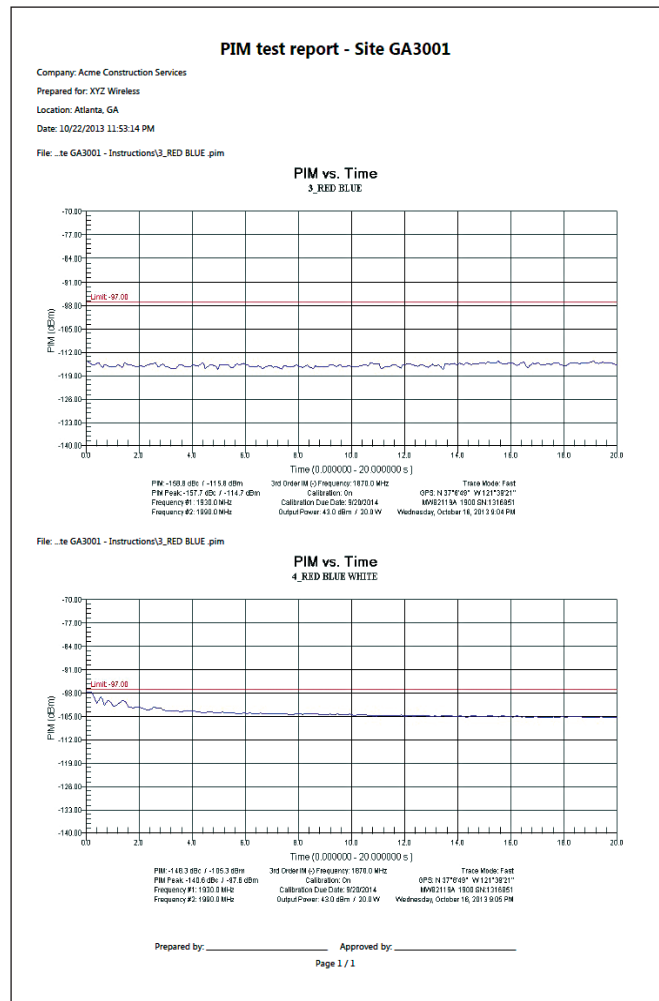
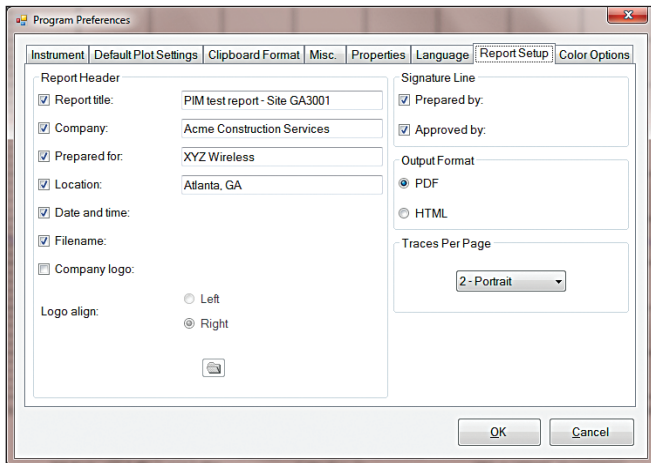
A second method is to open the files directly using the LST application. Connect a USB cable between the mini-USB connector on the PIM Master and a USB port on the PC running LST. After the drivers have successfully loaded, open the LST application and go to File > Open > Anritsu Devices > USB. The directories you have created on your PIM Master will be visible, as well as the individual measurement files in those directories. Hi-lite the files you want to open and select Open. Your measurement files are now open in LST and you are ready to generate a report.



## Graphical PIM reports:

If you desire PIM reports that include Distance-to-PIM™ (DTP), Swept PIM, Noise Floor and/ or PIM vs. time plots, use the Line Sweep Report Generator feature of LST.

- Open the measurements you wish to include in the report using LST.
- Adjust limit lines, scale, markers and titles as required.
- Go to File > Reporting > Trace Reporting Order to arrange plots in the order you want them to appear in the report.
- Go to File > Reporting > Line Sweep Report Setup to tell LST how you would like the report to appear. Select the desired report header fields, signature line options, output format and number of traces to appear on each page. Then select OK.
- Go to File > Reporting > Line Sweep Report Generator to create the actual report. A window will appear giving you the opportunity to name the report as well as select the save location. Select Save and your report will be generated and saved in the designated location.



## Tabular PIM reports:

If you desire a summary "Pass/Fail" PIM report in tabular format use the PIM Report Generator feature of LST. This report compares the peak PIM value to the limit setting for each measurement and presents a "Pass / Fail" result.

- Open the measurements you wish to include in the report using LST.

**Note:** Measurement type must be PIM vs. Time, Swept PIM or Noise Floor to use this report format!

- Adjust limit lines, scale, markers and titles as required.

**Note:** The Trace Reporting Order feature does not work for tabular PIM test reports. Instead, measurements will appear alphabetically on the report based on the subtitle field. Adjust this field as desired on each measurement to change the report order.

- Go to File > Reporting > PIM Report Generator to populate the report header fields and select the desired report units (dBm or dBc). Then select OK.
- A window will appear giving you the opportunity to name the report as well as select the save location. Select Save and your report will be generated and saved in the designated location.

PIM Report Creator

Site: GA3001

Company: ACME CONST SVS

Operator: John Smith

Certification: PM100301

dBm  dBc

OK

**Passive Intermodulation (PIM) Test Report**  
ACME CONST SVS

**Site Details**

Site	Operator	Certification
GA3001	John Smith	PM100301

**Test Parameters**

Tone 1 Frequency (MHz)	Tone 2 Frequency (MHz)	IM3 Frequency (MHz)
1930	1990	1870

**Test Results**

Test Point Description	Time	GPS	Power (dBm)	Limit (dBc)	PIM (dBc)	PIM Peak (dBc)	Result
1,LOW PIM LOAD	10/16/2013 9:02 PM	N 37°8'49" W 121°39'21"	43.0	-140.0	-175.7	-168.4	Pass
2,PIM STANDARD	10/16/2013 9:16 PM	N 37°8'49" W 121°39'21"	43.0	-140.0	-121.7	-121.7	Fail
3,RED BLUE	10/16/2013 9:04 PM	N 37°8'49" W 121°39'21"	43.0	-140.0	-158.8	-157.7	Pass
4,RED BLUE WHITE	10/16/2013 9:05 PM	N 37°8'49" W 121°39'21"	43.0	-140.0	-148.3	-140.6	Pass
5,RED GRAY	10/16/2013 9:06 PM	N 37°8'49" W 121°39'21"	43.0	-140.0	-146.8	-140.8	Pass
6,RED GRAY WHITE	10/16/2013 9:07 PM	N 37°8'49" W 121°39'21"	43.0	-140.0	-160.3	-159.0	Pass
7,BLUE BLUE	10/16/2013 9:09 PM	N 37°8'49" W 121°39'21"	43.0	-140.0	-146.9	-143.0	Pass
8,BLUE BLUE WHITE	10/16/2013 9:09 PM	N 37°8'49" W 121°39'21"	43.0	-140.0	-145.4	-142.0	Pass
9,BLUE GRAY	10/16/2013 9:10 PM	N 37°8'49" W 121°39'21"	43.0	-140.0	-156.6	-151.7	Pass

Test Set Model	Serial Number	Calibration Due	Software Version
MW82119A 1900	1316851	9/20/2014	V1.14

Page 1

**Note:** Measurements with the same test parameters and same test instrument will be sorted to the same results table. Measurements recorded using different test frequencies or different IM orders will be placed in a separate tables. Measurements from different test instruments will be placed on different pages.

**Note:** Measurements recorded with the High Reflection Warning by-passed will be placed in separate results tables.



• **United States**

**Anritsu Company**

1155 East Collins Boulevard, Suite 100,  
Richardson, TX, 75081 U.S.A.  
Toll Free: 1-800-267-4878  
Phone: +1-972-644-1777  
Fax: +1-972-671-1877

• **Canada**

**Anritsu Electronics Ltd.**

700 Silver Seven Road, Suite 120,  
Kanata, Ontario K2V 1C3, Canada  
Phone: +1-613-591-2003  
Fax: +1-613-591-1006

• **Brazil**

**Anritsu Eletrônica Ltda.**

Praça Amadeu Amaral, 27 - 1 Andar  
01327-010 - Bela Vista - São Paulo - SP - Brazil  
Phone: +55-11-3283-2511  
Fax: +55-11-3288-6940

• **Mexico**

**Anritsu Company, S.A. de C.V.**

Av. Ejército Nacional No. 579 Piso 9, Col. Granada  
11520 México, D.F., México  
Phone: +52-55-1101-2370  
Fax: +52-55-5254-3147

• **United Kingdom**

**Anritsu EMEA Ltd.**

200 Capability Green, Luton, Bedfordshire LU1 3LU, U.K.  
Phone: +44-1582-433280  
Fax: +44-1582-731303

• **France**

**Anritsu S.A.**

12 avenue du Québec, Batiment Iris 1-Silic 612,  
91140 Villebon-sur-Yvette, France  
Phone: +33-1-60-92-15-50  
Fax: +33-1-64-46-10-65

• **Germany**

**Anritsu GmbH**

Nemetschek Haus, Konrad-Zuse-Platz 1  
81829 München, Germany  
Phone: +49-89-442308-0  
Fax: +49-89-442308-55

• **Italy**

**Anritsu S.r.l.**

Via Elio Vittorini 129, 00144 Roma Italy  
Phone: +39-06-509-9711  
Fax: +39-06-502-2425

• **Sweden**

**Anritsu AB**

Kistagången 20B, 164 40 KISTA, Sweden  
Phone: +46-8-534-707-00  
Fax: +46-8-534-707-30

• **Finland**

**Anritsu AB**

Teknobulevardi 3-5, FI-01530 VANTAA, Finland  
Phone: +358-20-741-8100  
Fax: +358-20-741-8111

• **Denmark**

**Anritsu A/S**

Kay Fiskers Plads 9, 2300 Copenhagen S, Denmark  
Phone: +45-7211-2200  
Fax: +45-7211-2210

• **Russia**

**Anritsu EMEA Ltd.**

**Representation Office in Russia**  
Tverskaya str. 16/2, bld. 1, 7th floor.  
Moscow, 125009, Russia  
Phone: +7-495-363-1694  
Fax: +7-495-935-8962

• **Spain**

**Anritsu EMEA Ltd.**

**Representation Office in Spain**

Edificio Cuzco IV, Po. de la Castellana, 141, Pta. 8  
28046, Madrid, Spain  
Phone: +34-915-726-761  
Fax: +34-915-726-621

• **United Arab Emirates**

**Anritsu EMEA Ltd.**

**Dubai Liaison Office**

P O Box 500413 - Dubai Internet City  
Al Thuraya Building, Tower 1, Suite 701, 7th floor  
Dubai, United Arab Emirates  
Phone: +971-4-3670352  
Fax: +971-4-3688460

• **India**

**Anritsu India Pvt Ltd.**

2nd & 3rd Floor, #837/1, Binnamangla 1st Stage,  
Indiranagar, 100ft Road, Bangalore - 560038, India  
Phone: +91-80-4058-1300  
Fax: +91-80-4058-1301

• **Singapore**

**Anritsu Pte. Ltd.**

11 Chang Charn Road, #04-01, Shriro House  
Singapore 159640  
Phone: +65-6282-2400  
Fax: +65-6282-2533

• **P. R. China (Shanghai)**

**Anritsu (China) Co., Ltd.**

27th Floor, Tower A,  
New Caohejing International Business Center  
No. 391 Gui Ping Road Shanghai, Xu Hui Di District,  
Shanghai 200233, P.R. China  
Phone: +86-21-6237-0898  
Fax: +86-21-6237-0899

• **P. R. China (Hong Kong)**

**Anritsu Company Ltd.**

Unit 1006-7, 10/F., Greenfield Tower, Concordia Plaza,  
No. 1 Science Museum Road, Tsim Sha Tsui East,  
Kowloon, Hong Kong, P. R. China  
Phone: +852-2301-4980  
Fax: +852-2301-3545

• **Japan**

**Anritsu Corporation**

8-5, Tamura-cho, Atsugi-shi,  
Kanagawa, 243-0016 Japan  
Phone: +81-46-296-6509  
Fax: +81-46-225-8359

• **Korea**

**Anritsu Corporation, Ltd.**

5FL, 235 Pangyoeyeok-ro, Bundang-gu, Seongnam-si,  
Gyeonggi-do, 463-400 Korea  
Phone: +82-31-696-7750  
Fax: +82-31-696-7751

• **Australia**

**Anritsu Pty Ltd.**

Unit 21/270 Ferntree Gully Road,  
Notting Hill, Victoria 3168, Australia  
Phone: +61-3-9558-8177  
Fax: +61-3-9558-8255

• **Taiwan**

**Anritsu Company Inc.**

7F, No. 316, Sec. 1, Neihu Rd., Taipei 114, Taiwan  
Phone: +886-2-8751-1816  
Fax: +886-2-8751-1817

