

APPLICATION NOTE

MD8470A

Signaling Tester

Browsing Version

ANRITSU CORPORATION

Copyright © 2005 by ANRITSU CORPORATION

The contents of this manual shall not be disclosed in any way or reproduced in any media without the express written permission of Anritsu Corporation.

MD8470A Signaling Tester Application Note - Browsing Version -



Browsing

Anritsu Corporation
Measurement Business Center
Wireless Measurement Division
July 2005
Version 1.0

Discover What's Possible™
MD8470A-E-F-7

Slide 1

Anritsu

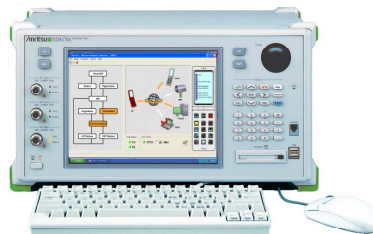
Contents



Browsing

1. Glossary of Terms
2. Browsing Types
3. Testing Browsing
 - 3-1. Testing Browsing with One Unit
 - 3-2. Testing Server Connection and Browsing
4. Advantages of Using MD8470A

Appendix. Browsing Variations



Discover What's Possible™
MD8470A-E-F-7

Slide 2

Anritsu

1. Glossary of Terms

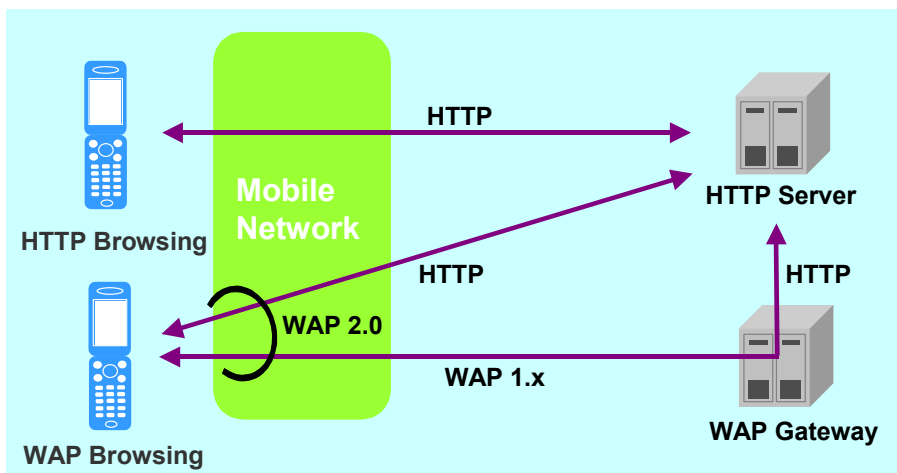


- GSM: Global System for Mobile communication
- HTTP: Hyper Text Transfer Protocol
- UE: User Equipment
- WAP: Wireless Application Protocol
- WNS: Wireless Network Simulator

2. Browsing Types



- Browsing using a UE can be broadly classified as either using a direct HTTP Internet connection, or using WAP developed for UEs. However, the WAP 2.0 protocol also supports HTTP connections.



3. Testing Browsing



3-1. Testing Browsing with One Unit



3-2. Testing Server Connection and Browsing



Discover What's Possible™
MD8470A-E-F-7

Slide 5

Anritsu

3-1. Testing Browsing with One Unit



- ✓ Connect the Call Proc Ethernet and Ethernet ports on the back of the MD8470A using a cross cable.
- ✓ Connect the UE and execute WNS.
- ✓ If browsing with the UE, try using the provided sample contents.

Note: At factory shipment, the default settings prevent operation of the DNS and WAP Gateway functions. To use these functions, start FakeDNS and WAP Gateway manually.



Discover What's Possible™
MD8470A-E-F-7

Slide 6

Anritsu

3-2. Testing Server Connection and Browsing



- ✓ Connect the Call Proc Ethernet and Ethernet ports on the back of the MD8470A using a cross cable.
- ✓ Connect the UE and execute WNS.
- ✓ If browsing with the UE, try using the provided sample contents.



Discover What's Possible™
MD8470A-E-F-7

Slide 7

Anritsu

4. Advantages of Using MD8470A



■ Other Equipment or PC Not Required

Browsing tests can be performed simply by connecting the MD8470A and UE. An external server can also be used.

■ Independent of actual network conditions

Since there is no connection to an online network, testing can be performed with no concerns about network situations such as delays and charges. Moreover, it is possible to perform tests in areas where there are no W-CDMA and GSM services.

■ Able to retrieve and analyze protocols used by wireless and browsing

The ability to save wireless protocol and browsing protocol logs during testing is useful for analyzing any unexplained points.

Discover What's Possible™
MD8470A-E-F-7

Slide 8

Anritsu

Appendix. Browsing Variations



The browsing functions provide the following capabilities:

- **Downloading Applications**

Developing and debugging Java applications running on the UE and checking their operation.

- **Downloading Files**

File downloading can be tested. In addition, the download time can be used as a measure of UE performance.

- **Downloading ringtones and video**

After downloading ringtones and video, the audio and video can be confirmed by running them.



Anritsu

Specifications are subject to change without notice.

ANRITSU CORPORATION

1800 Onna, Atsugi-shi, Kanagawa, 243-8555 Japan
Phone: +81-46-223-1111
Fax: +81-46-296-1264

● U.S.A.

ANRITSU COMPANY TX OFFICE SALES AND SERVICE

1155 East Collins Blvd., Richardson, TX 75081, U.S.A.
Toll Free: 1-800-ANRITSU (267-4878)
Phone: +1-972-644-1777
Fax: +1-972-644-3416

● Canada

ANRITSU ELECTRONICS LTD.
700 Silver Seven Road, Suite 120, Kanata,
ON K2V 1C3, Canada
Phone: +1-613-591-2003
Fax: +1-613-591-1006

● Brasil

ANRITSU ELETRÔNICA LTDA.
Praça Amadeu Amaral, 27 - 1 andar
01327-010 - Paraisópolis, Sao Paulo, Brazil
Phone: +55-11-3283-2511
Fax: +55-11-3886940

● U.K.

ANRITSU LTD.

200 Capability Green, Luton, Bedfordshire LU1 3LU, U.K.
Phone: +44-1582-433280
Fax: +44-1582-731303

● Germany

ANRITSU GmbH

Grafenberger Allee 54-56, 40237 Düsseldorf, Germany
Phone: +49-211-96855-0
Fax: +49-211-96855-55

● France

ANRITSU S.A.

9, Avenue du Québec Z.A. de Courtabœuf 91951 Les
Ulis Cedex, France
Phone: +33-1-60-92-15-50
Fax: +33-1-64-46-10-65

● Italy

ANRITSU S.p.A.

Via Elio Vittorini, 129, 00144 Roma EUR, Italy
Phone: +39-06-509-9711
Fax: +39-06-502-2425

● Sweden

ANRITSU AB

Borgarfjordsgatan 13 164 40 Kista, Sweden
Phone: +46-853470700
Fax: +46-853470730

● Finland

ANRITSU AB

Teknobulevardi 3-5, FI-01530 Vantaa, Finland
Phone: +358-9-4355-220
Fax: +358-9-4355-2250

● Denmark

Anritsu AB Danmark

Korskildelund 6 DK - 2670 Greve, Denmark
Phone: +45-36915035
Fax: +45-43909371

● Singapore

ANRITSU PTE LTD.

10, Hoe Chiang Road #07-01/02, Keppel Towers,
Singapore 089315
Phone: +65-6282-2400
Fax: +65-6282-2533

● Hong Kong

ANRITSU COMPANY LTD.

Suite 923, 9/F., Chinachem Golden Plaza, 77 Mody
Road, Tsimshatsui East, Kowloon, Hong Kong, China
Phone: +852-2301-4980
Fax: +852-2301-3545

● P. R. China

ANRITSU COMPANY LTD.

Beijing Representative Office

Room 1515, Beijing Fortune Building, No. 5 North
Road, the East 3rd Ring Road, Chao-Yang District
Beijing 100004, P.R. China
Phone: +86-10-6590-9230

● Korea

ANRITSU CORPORATION

8F Hyun Juk Bldg. 832-41, Yeoksam-dong,
Kangnam-ku, Seoul, 135-080, Korea
Phone: +82-2-553-6603
Fax: +82-2-553-6604

● Australia

ANRITSU PTY LTD.

Unit 3/170 Forster Road Mt. Waverley, Victoria, 3149,
Australia
Phone: +61-3-9558-8177
Fax: +61-3-9558-8255

● Taiwan

ANRITSU COMPANY INC.

7F, No. 316, Sec. 1, NeiHu Rd., Taipei, Taiwan
Phone: +886-2-8751-1816
Fax: +886-2-8751-1817

050203