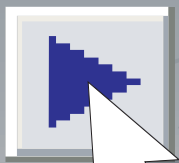


# LANTest

WLAN production software for use with the MT8860B

# LANTest



Run

- Transmit Power Levels
- Transmit Spectrum Mask
- Transmit Center Frequency Tolerance
- Transmit Modulation Accuracy (EVM)
- Spectral Flatness
- Receiver Sensitivity

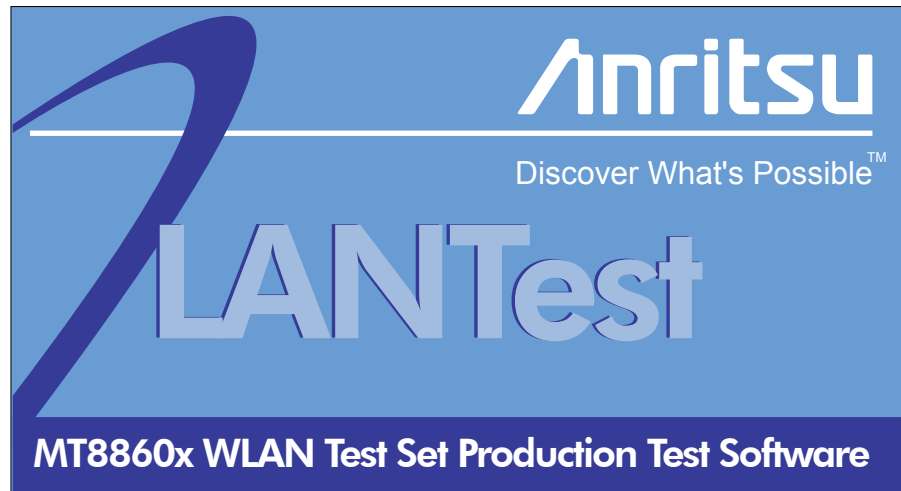
# Introducing LANTest

---



LANTest is a PC based software package provided as standard with each MT8860B. LANTest allows the user to predefine a complete test plan of measurements and to run this automatically for both Tx and Rx testing on 802.11b and 802.11g devices.

LANTest is the ideal tool for testing large numbers of devices quickly and easily in either a production or R&D environment.



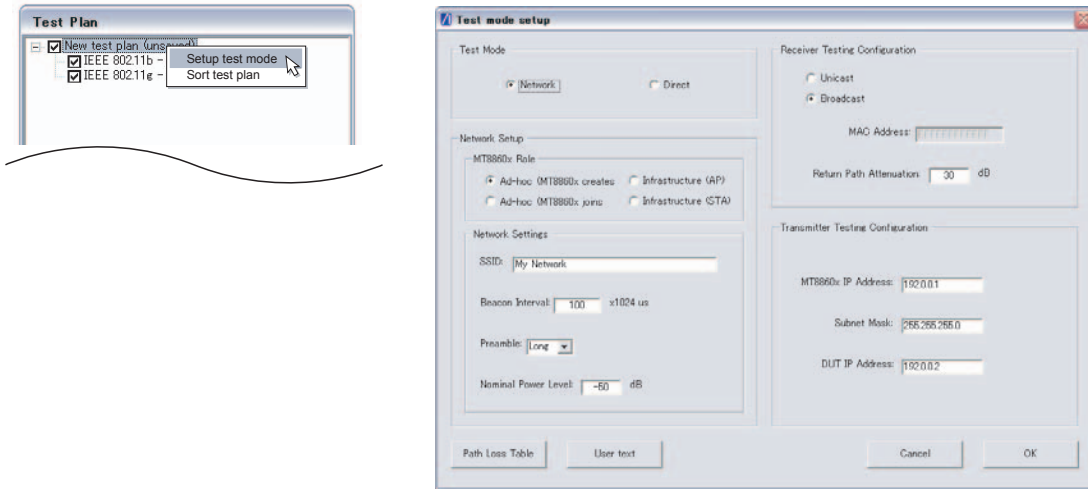
LANTest provides:-

- Familiar and intuitive windows interface enabling creation of test plans with ease, speed, and flexibility.
- Full compatibility with Tx and Rx testing on all 802.11b/g devices.
- Communication with the MT8860B by means of standard GPIB interface.
- One-click operation for selection and execution of required tests.
- Real time display of test status with pass/fail indication.
- Detailed test report printed and archived.
- Database search functionality for viewing test reports that have been automatically archived in Access database.
- Freedom to modify Visual Basic .net source code to match exact requirements.

# Creating a Test Plan

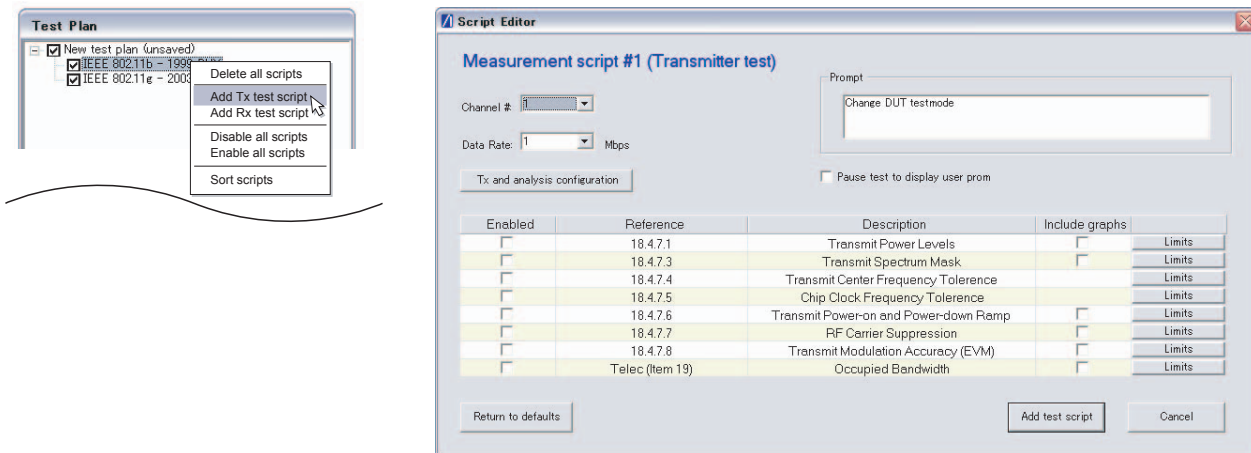
Test plans can be created in isolation without the need to have the MT8860B connected to the PC. Each test plan consists of two measurement groups; 802.11b and 802.11g. A number of transmitter and receiver measurement scripts can be defined for each group.

Define how the DUT is to be tested.



LANTest allows devices to be tested in either 'Network' or 'Direct' mode. In 'Network' mode, a network connection is established and devices are tested using standard WLAN protocols. In 'Direct' mode a network connection is not required. Devices are controlled using the test mode software utility provided by the chipset vendor. A path loss table can be defined for each test plan to correct for test system cable loss or over the air loss.

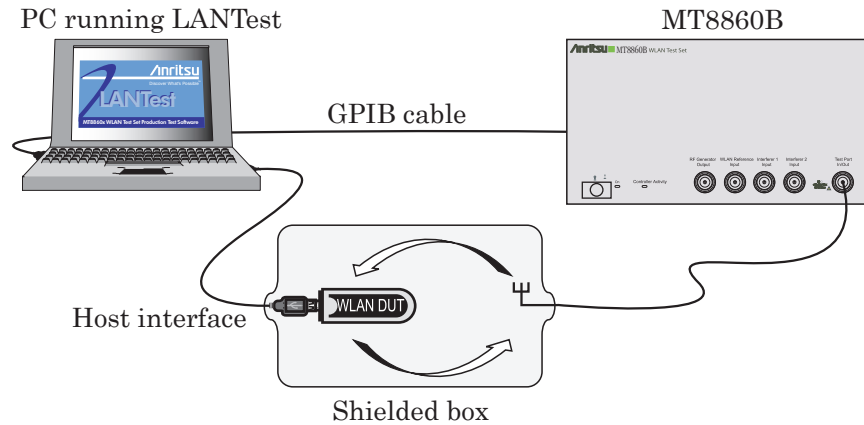
Create a Tx or Rx test script for the required WLAN standard.



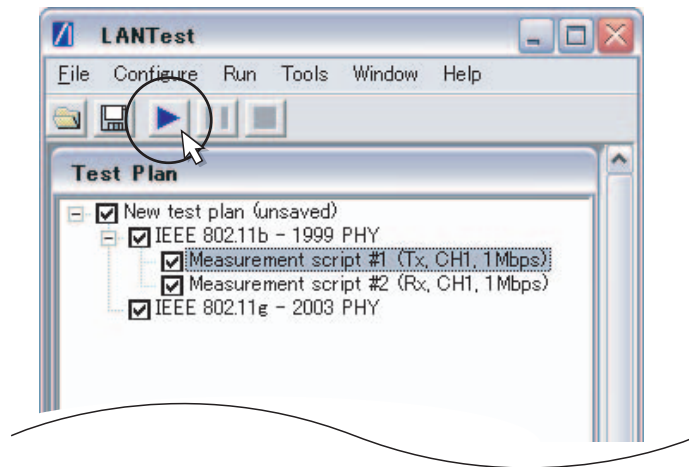
LANTest allows all combinations of channel number and data rate to be tested using a combination of transmitter and receiver measurement scripts. A channel number and data rate are specified for each measurement script. One or more measurements can be selected, and for each measurement pass/fail limits can be defined. Graphical data can also be requested where applicable.


# Executing the Test Plan

Configure the Equipment.

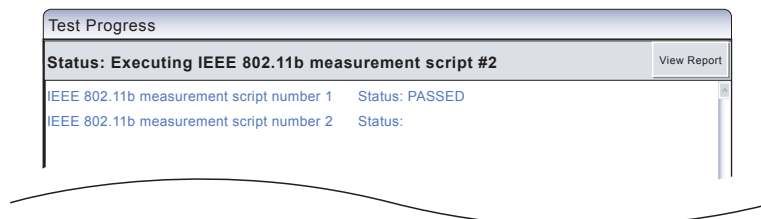


Select the required components of the test plan and click run.



Users can select to execute the entire test plan, a measurement group, or a single measurement script. Simply highlight the required component and click . Test plans created for R&D validation and verification can be easily modified for production applications by turning off measurement scripts.

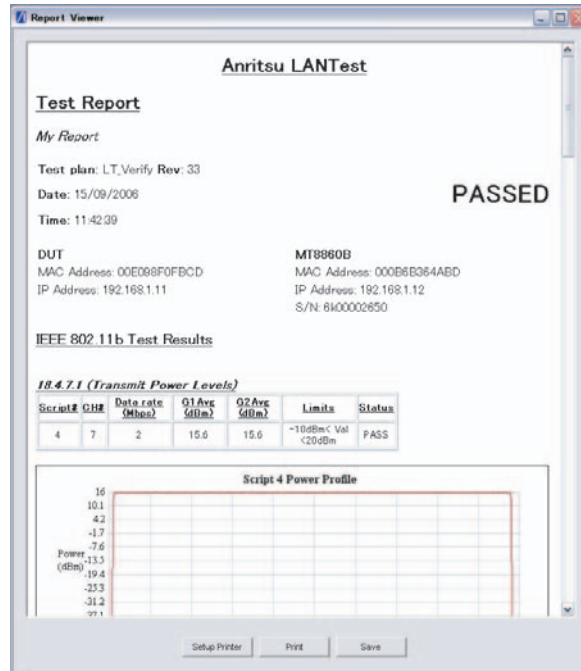
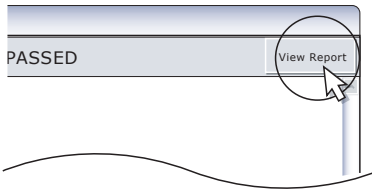
Overall test status displayed in real time.



The overall test status and the status of each individual measurement script is reported in real time as the test plan is executed.

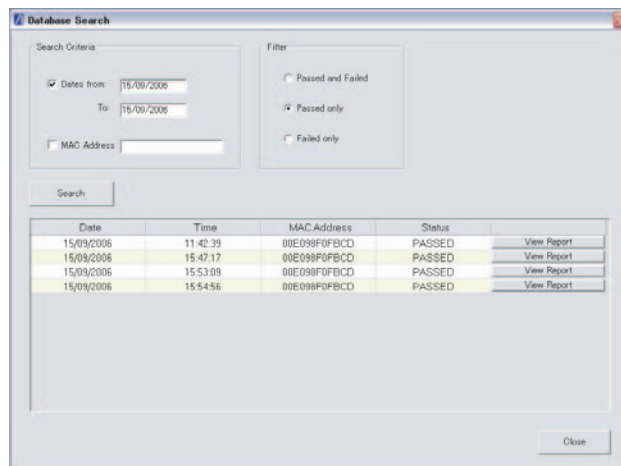
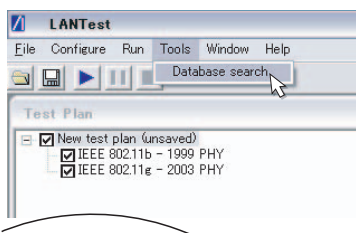
# Viewing the Test Results

Click to view detailed test report.



The measurement results can be inspected when the test plan is complete. The test report contains all the measured data, the limits applied, and a pass/fail indication. Reports are automatically written to a database, but can also be printed or saved to an html file.

Search test results archived in Microsoft Access database.



LANTest allows previous test reports to be extracted from the database. A search facility based on date or MAC address is provided, and the reports can be further filtered based on a pass/fail criteria.

## ANRITSU CORPORATION

5-1-1 Onna, Atsugi-shi, Kanagawa, 243-8555 Japan  
Phone: +81-46-223-1111  
Fax: +81-46-296-1264

### - Australia

#### ANRITSU PTY LTD.

Unit 3/170 Forster Road Mt. Waverley,  
Victoria, 3149, Australia  
Phone: +61-3-9558-8177  
Fax: +61-3-9558-8255

### - Brazil

#### ANRITSU ELETRÔNICA LTDA

Praca Amadeu Amaral, 27-1 andar  
01327-010 - Paraiso, Sao Paulo, Brazil  
Phone: +55-11-3283-2511  
Fax: +55-11-3886940

### - Canada

#### ANRITSU ELECTRONICS LTD.

700 Silver Seven Road, Suite 120, Kanata,  
ON K2V 1C3, Canada  
Phone: +1-613-591-2003  
Fax: +1-613-591-1006

### - Denmark

#### ANRITSU A/S

Kirkebjerg All 90 DK-2605 Brøndby, Denmark  
Phone: +45-72112200  
Fax: +45-72112210

### - Finland

#### ANRITSU AB

Teknobulevardi 3-5, FI-01530 Vantaa, Finland  
Phone: +358-9-4355-220  
Fax: +358-9-4355-2250

### - France

#### ANRITSU S.A.

9, Avenue du Québec Z.A. de Courtaboeuf 91951 Les  
Ulis Cedex, France  
Phone: +33-1-60-92-15-50  
Fax: +33-1-64-46-10-65

### - Germany

#### ANRITSU GmbH

Nemetschek Haus Konrad-Zuse-Platz 1 81829  
München, Germany  
Phone: +49 (0) 89 442308-0  
Fax: +49 (0) 89 442308-55

### - Hong Kong

#### ANRITSU COMPANY LTD.

Suite 923, 9/F., Chinachem Golden Plaza, 77 Mody  
Road, Tsimshatsui East, Kowloon, Hong Kong, China  
Phone: +852-2301-4980  
Fax: +852-2301-3545

### - India

#### ANRITSU CORPORATION India Liaison Office

Unit No.S-3, Second Floor, Esteem Red Cross Bhavan,  
No.26, Race Course Road, Bangalore 560 001 India  
Phone: +91-80-30944707

### - Italy

#### ANRITSU S.p.A.

Via Elio Vittorini, 129, 00144 Roma EUR, Italy  
Phone: +39-06-509-9711  
Fax: +39-06-502-2425

### - Korea

#### ANRITSU CORPORATION

8F Hyun Juk Bldg. 832-41, Yeoksam-dong,  
Kangnam-ku, Seoul, 135-080, Korea  
Phone: +82-2-553-6603  
Fax: +82-2-553-6604

### - P. R. China

#### ANRITSU COMPANY LTD.

Beijing Representative Office  
Room 1515, Beijing Fortune Building, No. 5 North Road,  
the East 3rd Ring Road, Chao-Yang District  
Beijing 100004, P.R. China  
Phone: +86-10-6590-9230

### - Singapore

#### ANRITSU PTE LTD.

10, Hoe Chiang Road #07-01/02, Keppel Towers,  
Singapore 089315  
Phone: +65-6282-2400  
Fax: +65-6282-2533

### - Sweden

#### ANRITSU AB

Borgafjordsgatan 13 164 40 Kista, Sweden  
Phone: +46-853470700  
Fax: +46-853470730

### - Taiwan

#### ANRITSU COMPANY INC.

7F, No. 316, Sec. 1, NeiHu Rd., Taipei, Taiwan  
Phone: +886-2-8751-1816  
Fax: +886-2-8751-1817

### - U.K.

#### ANRITSU LTD.

200 Capability Green, Luton, Bedfordshire LU1 3LU, U.K.  
Phone: +44-1582-433280  
Fax: +44-1582-731303

### - U.S.A.

#### ANRITSU COMPANY

1155 East Collins Boulevard,  
Richardson, Texas 75081  
Toll Free: 1-800-ANRITSU (267-4878)  
Phone: +1-972-644-1777  
Fax: +1-972-644-3416