

MS8608A/MS8609A Digital Mobile Radio Transmitter Tester

# MX268041B

HSDPA Automatic Measurement Software

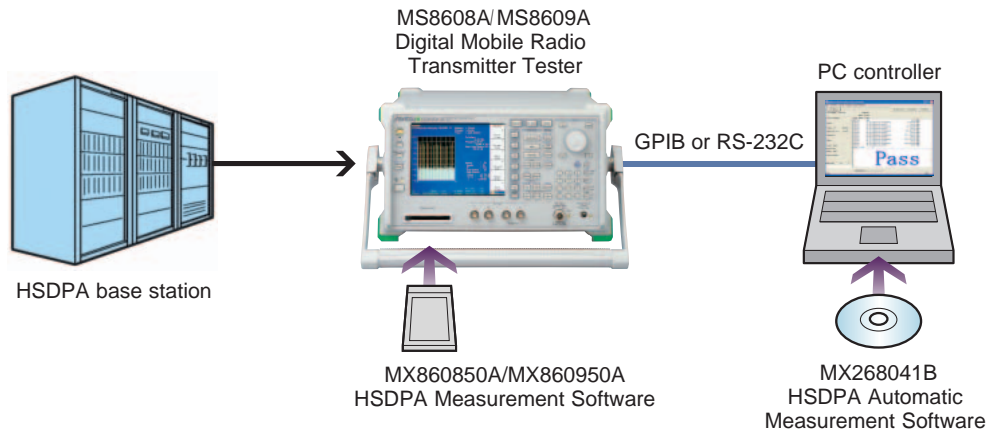


# Simple Automated High-speed HSDPA Measurement

The MX268041B HSDPA Automatic Measurement Software brings simple automated Tx testing to HSDPA base stations by installing it in an external PC to control the MS8608A/MS8609A in which the dedicated MX860850A/MX860950A measurement software has been installed.

Automatic measurement parameters can be saved and recalled, and measurement results can be saved and printed, greatly shortening the time required for constructing and maintaining base stations.

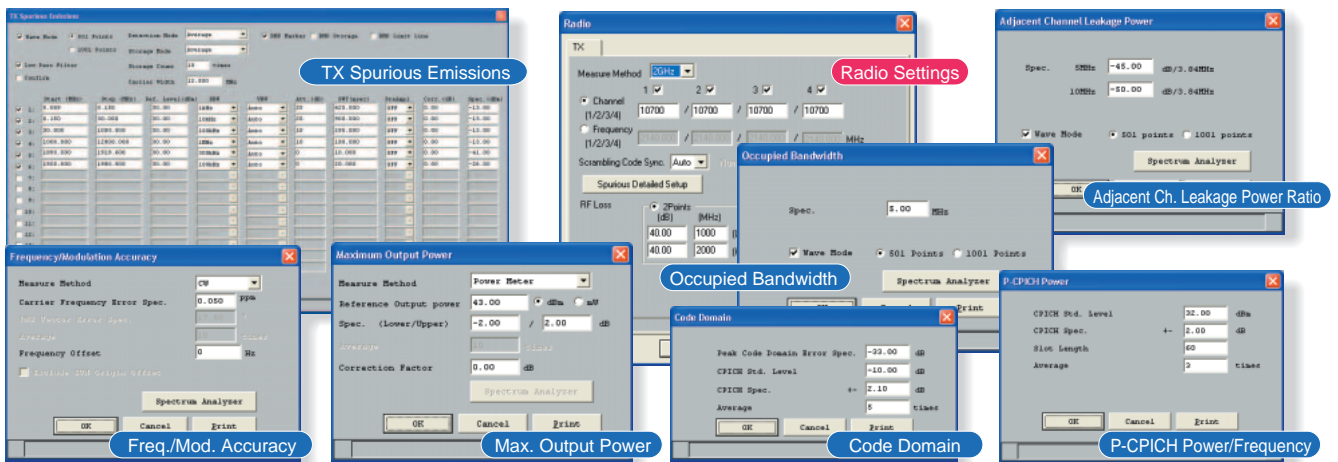
## Setup



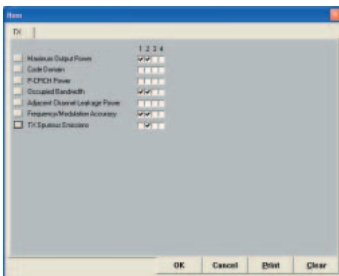
## Usage

### 1 Parameter settings

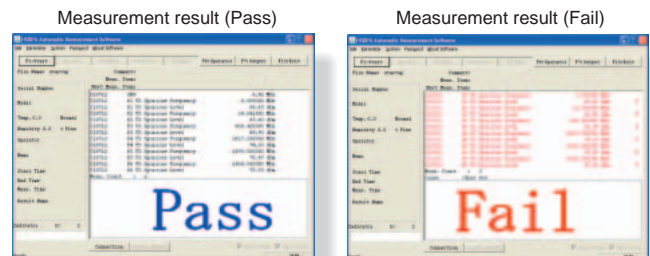
Each of the following parameters can be saved and recalled.



### 2 Measurement items



### 3 Measurement



## Specifications

Operating Environment	Personal Computer	Operating System: Microsoft Windows XP Professional (English version) Microsoft Windows 2000 Professional (English version) The system must meet the following requirements: Display: 1024 x 768 pixels min. and 256 colors min. HDD: 100 MB of free disk space Interfaces: RS-232C, USB or PC card slot
	Digital Mobile Radio Transmitter Tester	MS8608A Digital Mobile Radio Transmitter Tester MX860850A HSDPA Measurement Software (Version 4.2 or newer) MS8609A Digital Mobile Radio Transmitter Tester MX860850A HSDPA Measurement Software (Version 4.2 or newer)
	Printer	Drivers installed and support for A4 paper size
	GPIB Controller	National Instruments Corporation
Functions	Test items	<ul style="list-style-type: none"> <li>• Maximum Output Power: Power Meter, Transmitter Power, Channel Power, Burst Power</li> <li>• Code Domain</li> <li>• P-CPICH Power</li> <li>• Occupied Bandwidth: FFT, Spectrum</li> <li>• Adjacent Channel Leakage Power: Modulation, Spectrum (All)</li> <li>• Frequency/Modulation Accuracy: MOD, CW</li> <li>• TX Spurious Emissions</li> </ul>
	Measurement Execution Mode	Continues: Measurement continues until all selected items measured for each channel NG Stop: Measurement stops at NG item NG End: Measurement terminated at NG item Item Stop: Measurement stops at each item Nonstop: Measurement continues until all selected items measured for all specified channels Nonstop + NG Stop: When "NG" occurs in the Nonstop mode, measurement of that item stops.
	Parameter Save/Recall	Saves/Recalls settings and measurement parameters
	Result Output	<ul style="list-style-type: none"> <li>• Displayed at PC screen</li> <li>• Saved to auxiliary storage media</li> <li>• Output to printer</li> </ul>

Microsoft® Windows® is a registered trademark of Microsoft Corporation in the USA and other countries.

## Ordering Information

Please specify the model/order number, name and quantity when ordering.

Model/Order No.	Name	Remarks
MX268041B	<b>– Mainframe –</b> W-CDMA Automatic Measurement Software (English version)	CD-R (includes following)
W2707AE	<b>– Standard Accessories –</b> W-CDMA Automatic Measurement Software Operation Manual Readme2_E.txt	(CD-R) (CD-R), Installation procedure

## Anritsu Corporation

5-1-1 Onna, Atsugi-shi, Kanagawa, 243-8555 Japan  
Phone: +81-46-223-1111  
Fax: +81-46-296-1264

## ● U.S.A.

### Anritsu Company

1155 East Collins Blvd., Richardson, TX 75081, U.S.A.  
Toll Free: 1-800-ANRITSU (267-4878)  
Phone: +1-972-644-1777  
Fax: +1-972-671-1877

## ● Canada

### Anritsu Electronics Ltd.

700 Silver Seven Road, Suite 120, Kanata,  
Ontario K2V 1C3, Canada  
Phone: +1-613-591-2003  
Fax: +1-613-591-1006

## ● Brazil

### Anritsu Eletrônica Ltda.

Praca Amadeu Amaral, 27 - 1 Andar  
01327-010-Paraiso-São Paulo-Brazil  
Phone: +55-11-3283-2511  
Fax: +55-11-3288-6940

## ● U.K.

### Anritsu EMEA Ltd.

200 Capability Green, Luton, Bedfordshire LU1 3LU, U.K.  
Phone: +44-1582-433280  
Fax: +44-1582-731303

## ● Germany

### Anritsu GmbH

Nemetschek Haus, Konrad-Zuse-Platz 1  
81829 München, Germany  
Phone: +49 89 442308-0  
Fax: +49 89 442308-55

## ● France

### Anritsu S.A.

9, Avenue du Québec Z.A. de Courtabœuf  
91951 Les Ulis Cedex, France  
Phone: +33-1-60-92-15-50  
Fax: +33-1-64-46-10-65

## ● Italy

### Anritsu S.p.A.

Via Elio Vittorini, 129, 00144 Roma, Italy  
Phone: +39-6-509-9711  
Fax: +39-6-502-2425

## ● Sweden

### Anritsu AB

Borgafjordsgatan 13, 164 40 KISTA, Sweden  
Phone: +46-853470700  
Fax: +46-853470730

## ● Finland

### Anritsu AB

Teknobulevardi 3-5, FI-01530 Vantaa, Finland  
Phone: +358-20-741-8100  
Fax: +358-20-741-8111

## ● Denmark

### Anritsu A/S

Kirkebjerg Allé 90 DK-2605 Brøndby, Denmark  
Phone: +45-72112200  
Fax: +45-72112210

## ● Singapore

### Anritsu Pte Ltd.

10, Hoe Chiang Road, #07-01/02, Keppel Towers,  
Singapore 089315  
Phone: +65-6282-2400  
Fax: +65-6282-2533

## ● P.R. China (Hong Kong)

### Anritsu Company Ltd.

Suite 923, 9/F., Chinachem Golden Plaza, 77 Mody Road,  
Tsimshatsui East, Kowloon, Hong Kong, P.R. China  
Phone: +852-2301-4980  
Fax: +852-2301-3545

## ● P.R. China (Beijing)

### Anritsu Company Ltd.

#### Beijing Representative Office

Room 1515, Beijing Fortune Building,  
No. 5, Dong-San-Huan Bei Road,  
Chao-Yang District, Beijing 10004, P.R. China  
Phone: +86-10-6590-9230  
Fax: +86-10-6590-9235

## ● Korea

### Anritsu Corporation, Ltd.

8F Hyunjuk Building, 832-41, Yeoksam dong,  
Kangnam-ku, Seoul, 135-080, Korea  
Phone: +82-2-553-6603  
Fax: +82-2-553-6604

## ● Australia

### Anritsu Pty Ltd.

Unit 21/270 Ferntree Gully Road, Notting Hill,  
Victoria 3168, Australia  
Phone: +61-3-9558-8177  
Fax: +61-3-9558-8255

## ● Taiwan

### Anritsu Company Inc.

7F, No. 316, Sec. 1, Neihu Rd., Taipei 114, Taiwan  
Phone: +886-2-8751-1816  
Fax: +886-2-8751-1817

## ● India

### Anritsu Corporation

#### India Liaison Office

Unit No. S-3, Second Floor, Esteem Red Cross Bhavan,  
No. 26, Race Course Road, Bangalore 560 001, India  
Phone: +91-80-30944707  
Fax: +91-80-22356648

Please Contact: