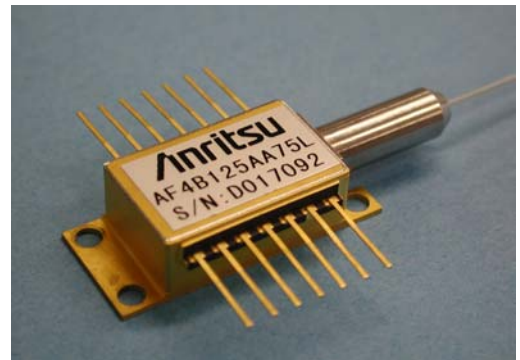


1.48 μ m LD Module AF4B SERIES type B Optical output power 200mW ~ 250mW

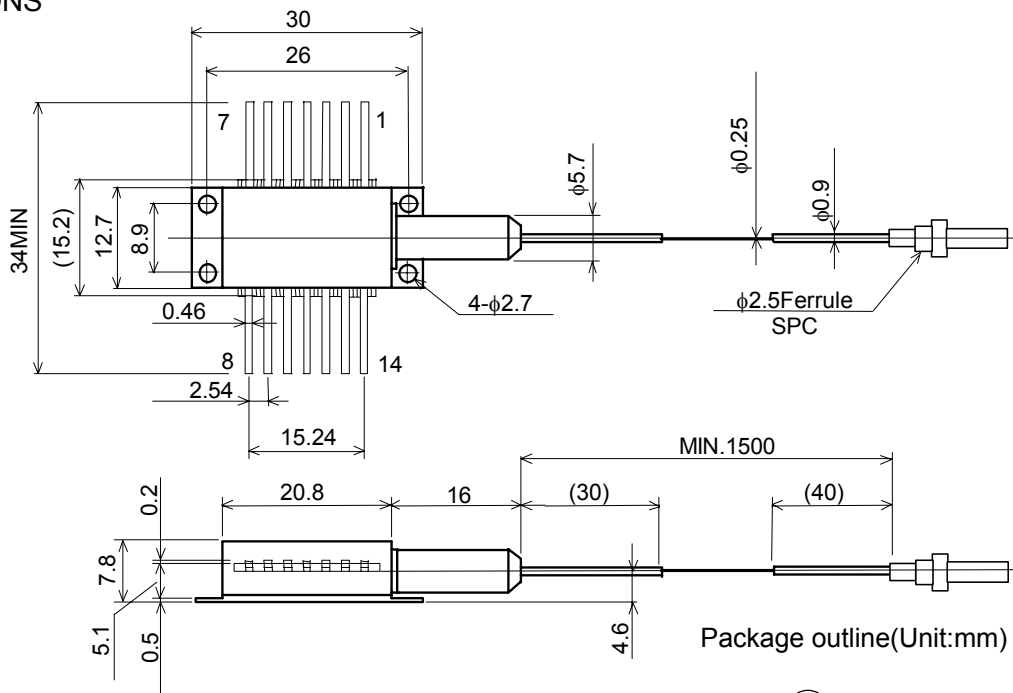
The AF4B SERIES type B is 1.48 μ m high power laser diode modules designed for Er doped fiber amplifier. The laser is packaged in a 14-pin butterfly package with optical isolator, monitor photodiode and thermo-electric cooler (TEC).

FEATURES

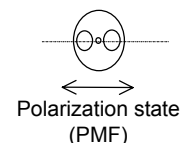
- ◆ Optical output :
 - 200mW ($I_F \leq 700\text{mA}$) AF4B120AA75L / AF4B120AD75L
 - 220mW ($I_F \leq 700\text{mA}$) AF4B122AA75L / AF4B122AD75L
 - 250mW ($I_F \leq 800\text{mA}$) AF4B125AA75L / AF4B125AD75L
- ◆ Fiber
 - SMF output (UV coating fiber: $\phi 0.25\text{mm}$)
 - PMF output (UV coating fiber: $\phi 0.25\text{mm}$)
- ◆ 14pin butterfly package
- ◆ Built-in optical isolator
- ◆ Internal monitor PD and TEC
- ◆ Low power consumption



DIMENSIONS



(Note) Polarization state of LD is aligned parallel to the slow axis.

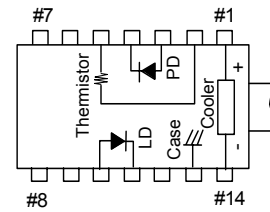


■ ABSOLUTE MAXIMUM RATINGS (T_{LD}=25°C)

Item	Symbol	Rating	Unit
LD Forward Current	IF	1300	mA
LD Reverse Voltage	VR	2	V
PD Forward Current	IFD	10	mA
PD Reverse Voltage	VRD	20	V
Operating Case temperature	T _C	-20 to +70	°C
Storage Temperature	T _{stg}	-40 to +85	°C
Cooler Current	IC	2	A

* Excess over the absolute maximum ratings may lead to damage.

■ TOP VIEW



■ Pin Configuration

No	FUNCTION	No	FUNCTION
1	Cooler anode	8	NC
2	Thermistor	9	NC
3	PD anode	10	LD anode
4	PD cathode	11	LD cathode
5	thermistor	12	NC
6	NC	13	Case
7	NC	14	Cooler cathode

■ OPTICAL AND ELECTRICAL CHARACTERISTICS (T_{LD}=25°C, T_C=25°C)

Item	Symbol	Test condition		AF4B120AA75L	AF4B122AA75L	AF4B125AA75L	Unit
				AF4B120AD75L	AF4B122AD75L	AF4B125AD75L	
Output power	Pf			200	220	250	mW
Forward Voltage	VF	At Output Power	Max.	2			V
Threshold Current	I _{th}		Typ.	70			mA
			Max.	150			
Forward Current (BOL)	IF	At Output Power	Max.	700		800	mA
Center Wavelength	λ _C	At Output Power	Min.	1460			nm
			Typ.	1475			
			Max.	1490			
Spectral width	Δλ	At Output Power RMS (-20dB)	Typ.	5			nm
			Max.	10			
Monitor Current	I _m	At Output Power VRD=5V	Min.	100			μA
			Typ.	—			
			Max.	1000			
PD Dark Current	I _d	VRD=5V	Max.	0.1			μA
Tracking Error	ΔPf	I _m =const, T _C =-20~70°C	Max.	0.5			dB
Cooler Voltage	V _C	IF=*EOL, T _C =70°C	Max.	3.1			V
Cooler Current	I _C	IF=*EOL, T _C =70°C	Max.	1.3		1.5	A
Thermistor Resistance	R _{th}	T _{LD} =25°C B=3900±100K	Min.	9.5			KΩ
			Typ.	10			
			Max.	10.5			
Optical Isolation	R _o	T _{LD} =25°C	Typ.	30			dB

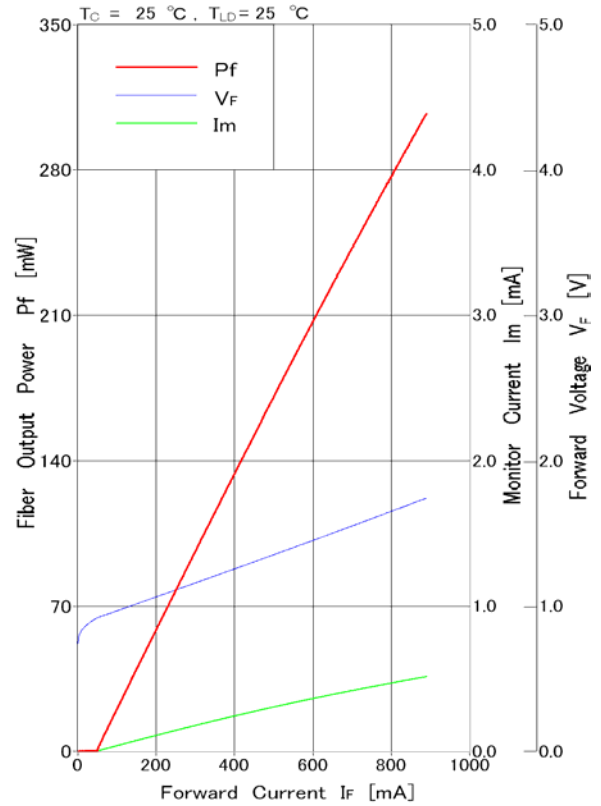
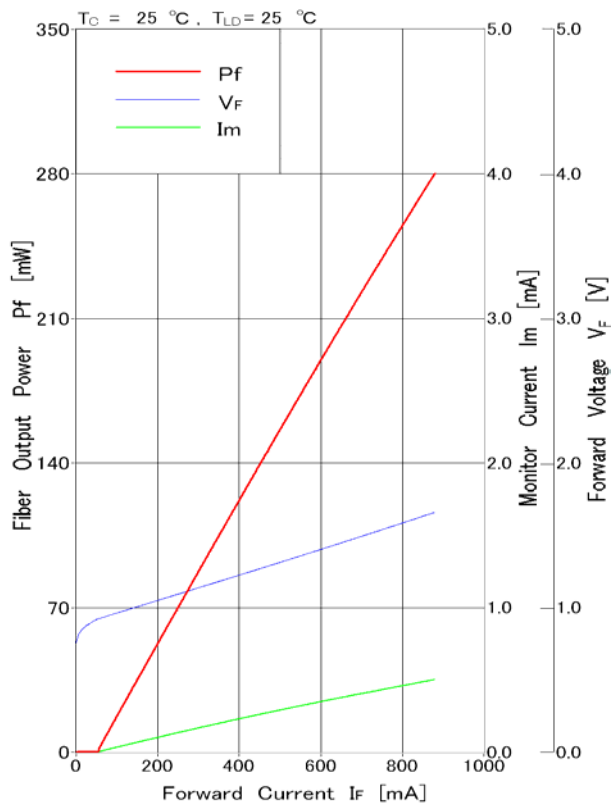
*EOL = BOL × 1.2

■ AF4B SERIES type B TYPICAL CHARACTERISTICS

◆ Fiber output power / Monitor Current / Voltage-Forward current characteristics

【AF4B122AA75L】

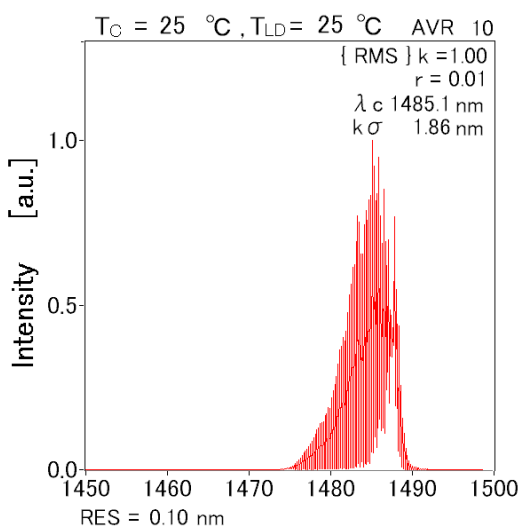
【AF4B125AA75L】



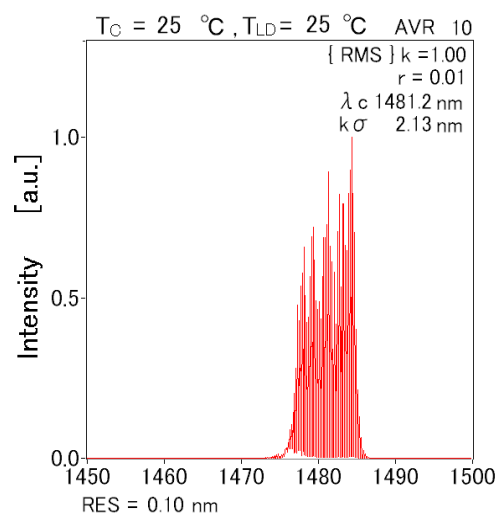
◆ EMISSION SPECTRUM

【AF4B122AA75L】

【AF4B125AA75L】



Wavelength [nm]
 $P_f = 220\text{ mW}$
 Emission Spectrum



Wavelength [nm]
 $P_f = 250\text{ mW}$
 Emission Spectrum

ORDERING INFORMATION

MODEL : AF4B1 # # A # # # #

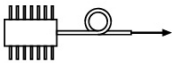
◆ Center Wavelength range
L:±15nm M:±20nm K:±10nm

◆ Center Wavelength
75:1475nm 80:1480nm
70:1470nm 65:1465nm

◆ Fiber and connector
A:SMF Ferrule D:PMF Ferrule
G:SMF FC/PC K:PMF FC/PC

◆ Optical output power
20:200mW 22:220mW
25:250mW

SEMICONDUCTOR LASER



AVOID EXPOSURE
Invisible laser radiation is emitted
from this aperture



INVISIBLE LASER RADIATION
AVOID DIRECT EXPOSURE TO BEAM
OUTPUT POWER 500mW
WAVELENGTH: 1.40 to 1.50 μm
CLASS IIIb LASER PRODUCT

Caution - use of controls or adjustments or performance of procedures other than those specified herein may result in hazardous radiation exposure.
This Product Complies with 21 CFR 1040.10 and 1040.11
Manufactured Anritsu Corp. 5-1-1 Onna, Atsugi-shi, Kanagawa, Japan

Anritsu Corporation reserves the right to change the design or specification of the product at any time without notice.

ANRITSU CORP. <http://www.anritsu.co.jp/>

Anritsu Corporation

5-1-1 Onna, Atsugi-shi, Kanagawa, 243-8555 Japan
Phone: +81-46-223-1111
Fax: +81-46-296-1264

• U.S.A.

Anritsu Company
1155 East Collins Blvd., Richardson, TX 75081, U.S.A.
Toll Free: 1-800-ANRITSU (267-4878)
Phone: +1-972-644-1777
Fax: +1-972-671-1877

• Canada

Anritsu Electronics Ltd.
700 Silver Seven Road, Suite 120, Kanata,
Ontario K2V 1C3, Canada
Phone: +1-613-591-2003
Fax: +1-613-591-1006

• Brazil

Anritsu Eletrônica Ltda.
Praça Amadeu Amaral, 27 - 1 Andar
01327-010-Paraisópolis-São Paulo-Brazil
Phone: +55-11-3283-2511
Fax: +55-11-3288-6940

• U.K.

Anritsu EMEA Ltd.
200 Capability Green, Luton, Bedfordshire LU1 3LU, U.K.
Phone: +44-1582-433280
Fax: +44-1582-731303

• Germany

Anritsu GmbH
Nemetschek Haus, Konrad-Zuse-Platz 1
81829 München, Germany
Phone: +49 89 442308-0
Fax: +49 89 442308-55

• France

Anritsu S.A.
9, Avenue du Québec Z.A. de Courtaubouf 91951 Les
Ulis Cedex, France
Phone: +33-1-60-92-15-50
Fax: +33-1-64-46-10-65

• Italy

Anritsu S.p.A.
Via Elio Vittorini, 129, 00144 Roma, Italy
Phone: +39-6-509-9711
Fax: +39-6-502-2425

• Sweden

Anritsu AB
Borgafjordsgatan 13, 164 40 KISTA, Sweden
Phone: +46-853470700
Fax: +46-853470730

• Finland

Anritsu AB
Teknobulevardi 3-5, FI-01530 Vantaa, Finland
Phone: +358-20-741-8100
Fax: +358-20-741-8111

• Denmark

Anritsu A/S
Kirkebjerg Allé 90 DK-2605 Brøndby, Denmark
Phone: +45-72112200
Fax: +45-72112210

• Singapore

Anritsu Pte Ltd.
10, Hoe Chiang Road, #07-01/02, Keppel Towers,
Singapore 089315
Phone: +65-62828-2400
Fax: +65-6282-2533

• P.R. China (Hong Kong)

Anritsu Company Ltd.
Suite 923, 9/F., Chinachem Golden Plaza, 77 Mody Road,
Tsimshatsui East, Kowloon, Hong Kong, P.R. China
Phone: +852-2301-4980
Fax: +852-2301-3545

• P.R. China (Beijing)

Anritsu Company Ltd.
Beijing Representative Office
Room 1515, Beijing Fortune Building,
No. 5, Dong-San-Huan Bei Road,
Chao-Yang District, Beijing 10004, P.R. China
Phone: +86-10-6590-9230
Fax: +86-10-6590-9235

• Korea

Anritsu Corporation, Ltd.
8F Hyunjuk Building, 832-41, Yeoksam dong,
Kangnam-ku, Seoul, 135-080, Korea
Phone: +82-2-553-6603
Fax: +82-2-553-6604

• Australia

Anritsu Pty Ltd.
Unit 21/270 Ferntree Gully Road, Notting Hill,
Victoria 3168, Australia
Phone: +61-3-9558-8177
Fax: +61-3-9558-8255

• Taiwan

Anritsu Company Inc.
7F, No. 316, Sec. 1, Neihu Rd., Taipei 114, Taiwan
Phone: +886-2-8751-1816
Fax: +886-2-8751-1817

• India

Anritsu Corporation
India Liaison Office
Unit No. S-3, Second Floor, Esteem Red Cross Bhavan,
No. 26, Race Course Road, Bangalore 560 001, India
Phone: +91-80-30944707
Fax: +91-80-22356648