

CMA5000 Gigabit Ethernet

SPECIFICATIONS

MPEG-2 Transport Stream Analysis Option



The MPEG-2 option for the CMA5000 Gigabit Ethernet test module allows users to capture and decode Ethernet frames from a network, and filter out an MPEG-2 transport stream. This MPEG-2 stream may then be fully analyzed on the unit in the field, or even played back on the CMA5000 with an MPEG-2 player such as VLC. This option allows field engineers and technicians to not only test the Ethernet network, but also the video service being delivered. The powerful MPEG-2 analysis software, powered by Triveni Digital, on the CMA5000 will completely analyze the entire video transport stream, or the MPEG-2 stream may be viewed to see issues such as loss of synchronization between video and audio or an overly pixilated video stream.

The ability to easily and cost effectively test the quality of the video stream is essential to the successful rollout of an Ethernet based Video Transport System. Whether it is Video on Demand (VoD) or IPTV, if Gigabit Ethernet is being used as the transport protocol, the addition of MPEG-2 analysis capability to an Ethernet test set is a major benefit. In addition to testing the Throughput, Frame Loss and Latency of the Ethernet transport, the CMA5000 GigE module now offers an MPEG-2 video analysis option that enables field personnel to install, troubleshoot and verify the quality of MPEG-2 Video Transport Streams.

Key Features	Key Benefits
<ul style="list-style-type: none"> • Display of 13 different transport stream errors • Instant display of Virtual channels, elementary streams and PID's in a stream • Real time analysis capability • Percentages of audio, video and data in the stream • Video and audio buffer graphs indicating buffer overflow or underflow • PCR timing information including PCR jitter • PSIP and MPEG tables • Programs overview including Video and audio PID's • Approximately 5 minutes of video capture • IGMP – Monitor • Channel Statistics – Quickly identifies UDP ports and throughput per channel 	<ul style="list-style-type: none"> • Full line rate Gigabit Ethernet modular test set plus MPEG-2 analysis. A single unit to cover many VoD and IPTV field test requirements • Automated RFC2544 testing including Throughput latency and jitter <ul style="list-style-type: none"> ○ Measuring throughput, latency, jitter, etc. via RFC 2544 ○ Two 10/100/1000 electrical ports ○ Two optical GBIC ports • Complete MPEG-2 Analysis including: <ul style="list-style-type: none"> ○ Transport stream analysis ○ Program Timing Reference ○ Program table information

To simplify this testing in the field, the CMA5000 also supports IGMP and can perform an IGMP Join on up to six Multicast IP addresses. This capability allows the CMA5000 to analyze video streams directly from a switch or router without the need to mirror or span a port. Since VoD systems use IGMP as an essential method of maximizing bandwidth by multicasting, the ability of the CMA5000 to act as a host on an IGMP multicast system is necessary for easy, efficient MPEG-2 analysis. A router or a switch in a VoD or IPTV network sends out periodic messages to connected hosts to determine if they are a member of a multicast group. If not, that host will not receive the multicast stream. If is the host is a member, it receives, or continues to receive the video stream. Through the use of IGMP, the CMA5000 can participate as a member host of a multicast group to receive and analyze the video stream without the need to mirror or span a switch port in the field greatly simplifying testing.

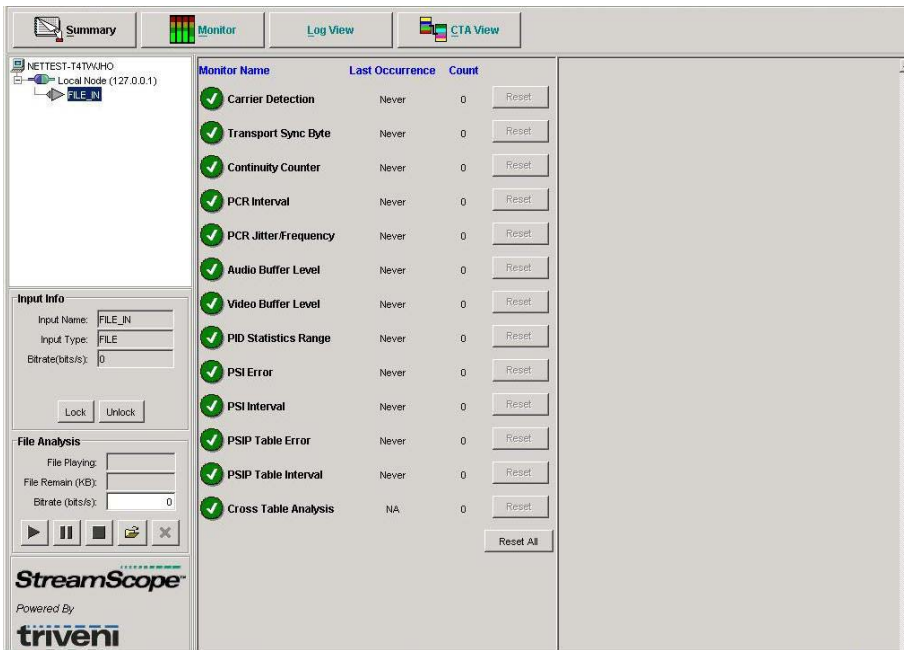


Fig 1 CMA5000 Summary screen shot: providing instant pass/fail indication

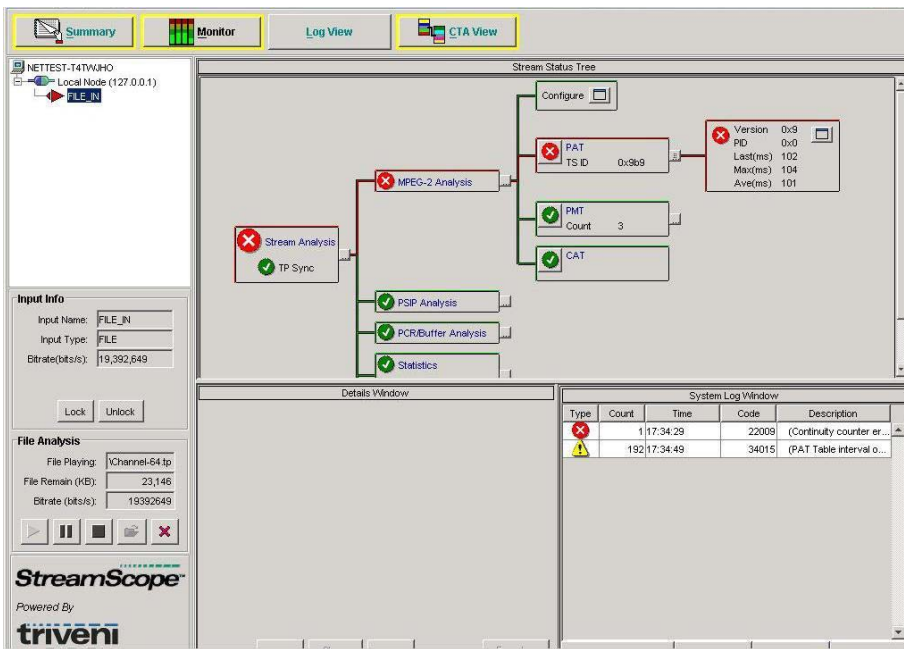


Fig 2 CMA5000 screen shot: expanded results to show exact cause of errors

Anritsu Corporation

5-1-1 Onna, Atsugi-shi, Kanagawa, 243-8555 Japan
Phone: +81-46-223-1111
Fax: +81-46-296-1264

• U.S.A.**Anritsu Company**

1155 East Collins Blvd., Suite 100, Richardson,
TX 75081, U.S.A.
Toll Free: 1-800-267-4878
Phone: +1-972-644-1777
Fax: +1-972-671-1877

• Canada**Anritsu Electronics Ltd.**

700 Silver Seven Road, Suite 120, Kanata,
Ontario K2V 1C3, Canada
Phone: +1-613-591-2003
Fax: +1-613-591-1006

• Brazil**Anritsu Eletrônica Ltda.**

Praca Amadeu Amaral, 27 - 1 Andar
01327-010-Paraiso-São Paulo-Brazil
Phone: +55-11-3283-2511
Fax: +55-11-3288-6940

• Mexico**Anritsu Company, S.A. de C.V.**

Av. Ejército Nacional No. 579 Piso 9, Col. Granada
11520 México, D.F., México
Phone: +52-55-1101-2370
Fax: +52-55-5254-3147

• U.K.**Anritsu EMEA Ltd.**

200 Capability Green, Luton, Bedfordshire, LU1 3LU, U.K.
Phone: +44-1582-433200
Fax: +44-1582-731303

• France**Anritsu S.A.**

16/18 avenue du Québec-SILIC 720
91961 COURTABOEUF CEDEX, France
Phone: +33-1-60-92-15-50
Fax: +33-1-64-46-10-65

• Germany**Anritsu GmbH**

Nemetschek Haus, Konrad-Zuse-Platz 1
81829 München, Germany
Phone: +49-89-442308-0
Fax: +49-89-442308-55

• Italy**Anritsu S.p.A.**

Via Elio Vittorini 129, 00144 Roma, Italy
Phone: +39-6-509-9711
Fax: +39-6-502-2425

• Sweden**Anritsu AB**

Borgafjordsgatan 13, 164 40 KISTA, Sweden
Phone: +46-8-534-707-00
Fax: +46-8-534-707-30

• Finland**Anritsu AB**

Teknobulevardi 3-5, FI-01530 VANTAA, Finland
Phone: +358-20-741-8100
Fax: +358-20-741-8111

• Denmark**Anritsu A/S**

Kirkebjerg Allé 90, DK-2605 Brøndby, Denmark
Phone: +45-72112200
Fax: +45-72112210

• Spain**Anritsu EMEA Ltd.****Oficina de Representación en España**

Edificio Veganova
Avda de la Vega, n° 1 (edf 8, pl 1, of 8)
28108 ALCOBENDAS - Madrid, Spain
Phone: +34-914905761
Fax: +34-914905762

• Russia**Anritsu EMEA Ltd.****Representation Office in Russia**

Tverskaya str. 16/2, bld. 1, 7th floor.
Russia, 125009, Moscow
Phone: +7-495-363-1694
Fax: +7-495-935-8962

• United Arab Emirates**Anritsu EMEA Ltd.****Dubai Liaison Office**

P O Box 500413 - Dubai Internet City
Al Thuraya Building, Tower 1, Suit 701, 7th Floor
Dubai, United Arab Emirates
Phone: +971-4-3670352
Fax: +971-4-3688460

• Singapore**Anritsu Pte. Ltd.**

60 Alexandra Terrace, #02-08, The Comtech (Lobby A)
Singapore 118502
Phone: +65-6282-2400
Fax: +65-6282-2533

• India**Anritsu Pte. Ltd.****India Branch Office**

Unit No. S-3, Second Floor, Esteem Red Cross Bhavan,
No. 26, Race Course Road, Bangalore 560 001, India
Phone: +91-80-32944707
Fax: +91-80-22356648

• P.R. China (Hong Kong)**Anritsu Company Ltd.**

Units 4 & 5, 28th Floor, Greenfield Tower, Concordia Plaza
No. 1 Science Museum Road, Tsim Sha Tsui East,
Kowloon, Hong Kong
Phone: +852-2301-4980
Fax: +852-2301-3545

• P.R. China (Beijing)**Anritsu Company Ltd.****Beijing Representative Office**

Room 1515, Beijing Fortune Building,
No. 5, Dong-San-Huan Bei Road,
Chao-Yang District, Beijing 10004, P.R. China
Phone: +86-10-6590-9230
Fax: +86-10-6590-9235

• Korea**Anritsu Corporation, Ltd.**

8F Hyunjuk Building, 832-41, Yeoksam Dong,
Kangnam-ku, Seoul, 135-080, Korea
Phone: +82-2-553-6603
Fax: +82-2-553-6604

• Australia**Anritsu Pty. Ltd.**

Unit 21/270 Ferntree Gully Road, Notting Hill,
Victoria 3168, Australia
Phone: +61-3-9558-8177
Fax: +61-3-9558-8255

• Taiwan**Anritsu Company Inc.**

7F, No. 316, Sec. 1, Neihu Rd., Taipei 114, Taiwan
Phone: +886-2-8751-1816
Fax: +886-2-8751-1817