



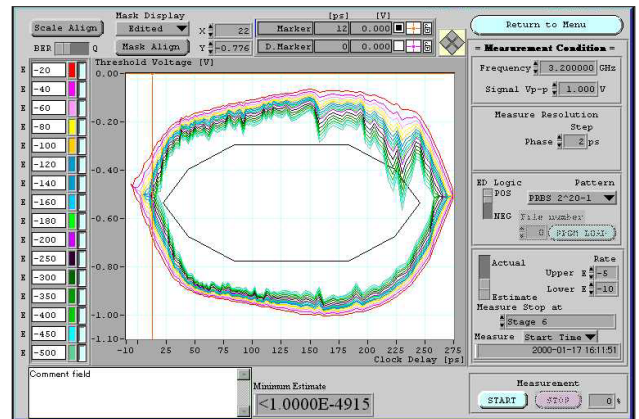
MX176400A

Q and Eye Analysis Software

(For MP1763A/B/C Pulse Pattern Generator, MP1764A/C Error Detector)

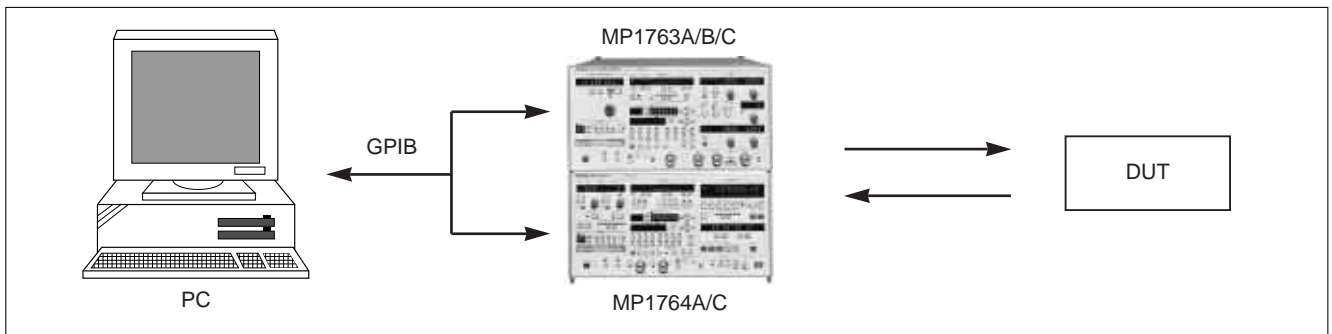
MX176400A controls MP1763A/B/C and MP1764A/C from the PC to measure Q factor, eye margin, and eye diagram.

- Measures Q factor, eye margin, and eye diagram
- Allows measurement of burst signals
- Saves screen images in picture formats of BMP, JPG, and PNG
- Saves the measured results in CSV format



Measurement Form

- When using the MP1763A/B/C and MP1764A/C

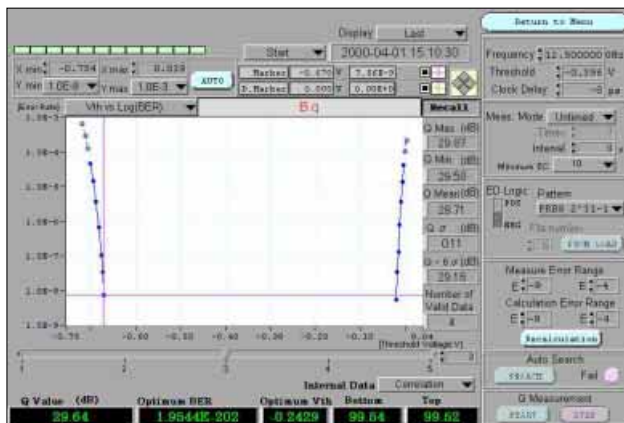


- When using any signal source

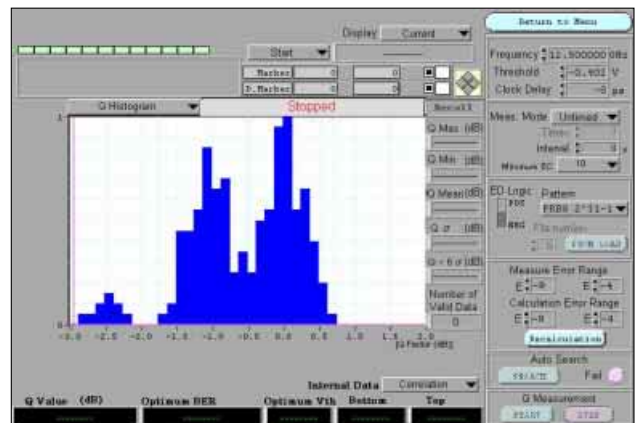


Q Factor Measurement

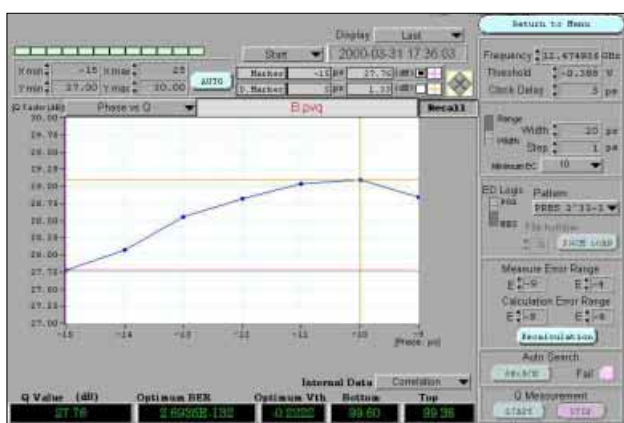
- Conforms to OSFTP-9
- Graphical functions providing 11 kinds of indication including threshold voltage vs. bit error rate, time vs. Q factor, and phase vs. Q factor
- Display functions indicating various measurement data relating Q factor, including optimum bit error rate/threshold voltage, correlation factor for least squares, and Gaussian parameter
- Various parameters for measuring Q factors (bit error rate range, bit error rate measurement accuracy, threshold voltage variation) can be set arbitrary.



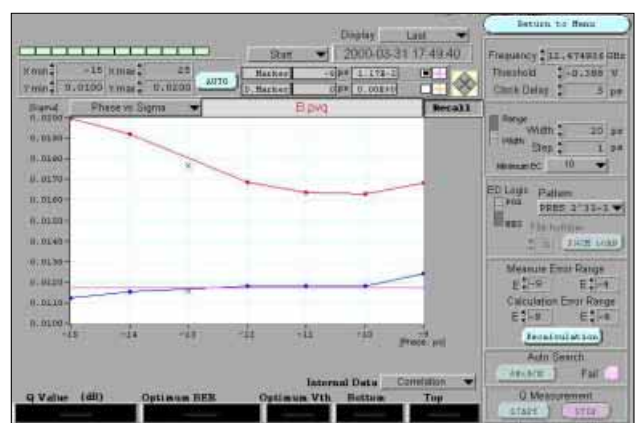
Threshold voltage vs. bit error rate



Histogram



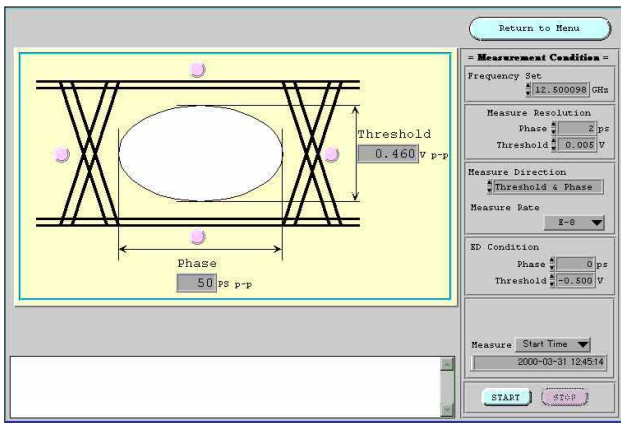
Phase vs. Q factor



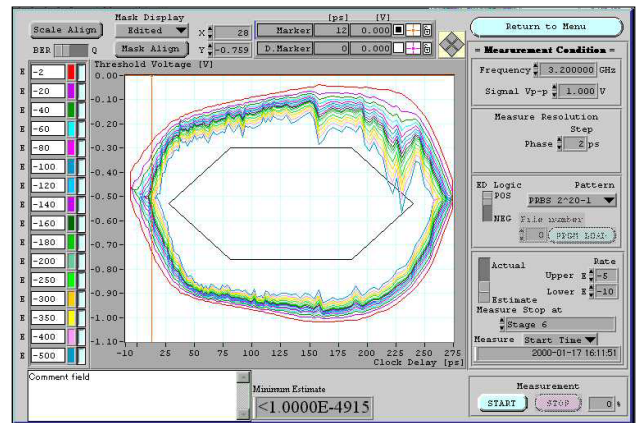
Phase vs. σ

Eye Measurement

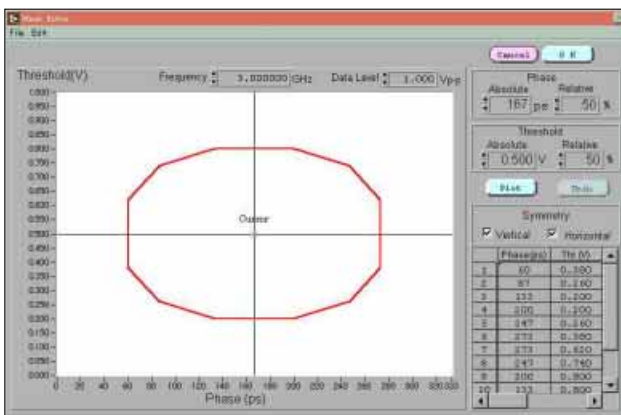
- Margin measurement includes the phase margin (horizontal), threshold voltage margin (vertical) and eye margin measurements
- Eye diagram measurement that gains the bit error rate contour line by connecting the points to gain specified error rate
- Measures eye margins and eye diagrams for E-2 through E-15 (actual measurement)
- By applying the Q factor measurement, an eye diagram up to E-4915 can be measured and estimated (estimate measurement)
- Mask template display and edit function
- Mask test function that realizes a simple pass/fail judgment by measuring the bit error rate of points specifying the template



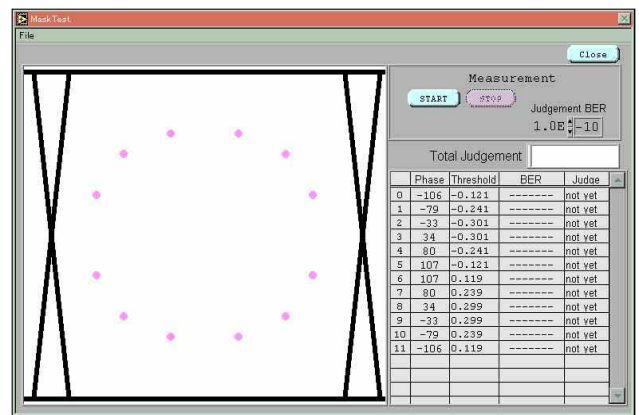
Eye margin



Eye diagram



Mask edition



Mask test

Specifications

Required system	Computer: IBM-PC/AT or full compatible, OS: Windows 95/98/NT, CPU: Pentium 166 MHz or higher, Memory: 64 MB or more, Hard disk space: 100 MB or more GPIB: National Instruments made GPIB interface (PCMCIA-GPIB or AT-GPIB/TNT series boards are recommended.) Display Resolution: 800 x 600 or more, Display colors: 256 or more [If two or more applications are running simultaneously, operation cannot be guaranteed.]
Function	Measurement frequency: 2 to 12.5 GHz (eye diagram/eye margin measurement), 1 to 12.5 GHz (Q factor measurement) Measurement patterns: PRGM, PRBS 7, 9, 11, 15, 20, 23, 31 Pattern format: Continuous/burst (To be synchronized within 1 s) Eye margin measurement Measurement resolution (threshold): 1 to 10 mV (1 mV steps) Measurement resolution (phase): 1 to 10 ps (1 ps steps) Measurement rate: E-2 to E-15 Eye diagram measurement Measurement resolution (phase): 1 to 10 ps (1 ps steps) Measurement rate: E-2 to E-15 (actual measurement), E-3 to E-12 (estimate measurement) Display rate: E-2 to E-15 (actual measurement), E-2 to E-4915 (estimate measurement) Mask test judgment rate: E-2 to E-15 Q factor measurement Measurement style: Multiple measurements at fixed phase/phase vs. Q factor measurements Bit error rate range: Upper limit at E-3 to E-5, lower limit at E-7 to E-12 Minimum error count (measurement accuracy): 1, 10, 100, 1000 Vth shift width: Automatic, fixed (1 to 10 mV/1 mV/steps)

Windows is a registered trademark of Microsoft Corporation of the U.S. in the United States and other countries. IBM and AT are registered trademarks of International Business Machines. Pentium is a registered trademark of Intel Corporation. PCMCIA-GPIB and AT-GPIB/TNT are registered trademarks of National Instruments.

Ordering Information

Please specify the model/order number, name and quantity when ordering.

Model/Order No.	Name
MX176400A	Software Q and Eye Analysis Software
W1740AE	Standard accessory MX176400A operation manual: 1 copy



Specifications are subject to change without notice.

ANRITSU CORPORATION MEASUREMENT SOLUTIONS

5-10-27, Minamiazabu, Minato-ku, Tokyo 106-8570, Japan
 Phone: +81-3-3446-1111
 Telex: J34372
 Fax: +81-3-3442-0235

● U.S.A. ANRITSU COMPANY

North American Region Headquarters
 1155 East Collins Blvd., Richardson, Tx 75081, U.S.A.
 Toll Free: 1-800-ANRITSU (267-4878)
 Phone: +1-972-644-1777
 Fax: +1-972-671-1877

● Canada ANRITSU ELECTRONICS LTD.

Unit 102, 215 Stafford Road West
 Nepean, Ontario K2H 9C1, Canada
 Phone: +1-613-828-4090
 Fax: +1-613-828-5400

● Brasil ANRITSU ELETRÔNICA LTDA.

Praia de Botafogo 440, Sala 2401 CEP 22250-040,
 Rio de Janeiro, RJ, Brasil
 Phone: +55-21-5276922
 Fax: +55-21-537-1456

● U.K. ANRITSU LTD.

200 Capability Green, Luton, Bedfordshire LU1 3LU, U.K.
 Phone: +44-1582-433200
 Fax: +44-1582-731303

● Germany ANRITSU GmbH

Grafenberger Allee 54-56, 40237 Düsseldorf, Germany
 Phone: +49-211-96855-0
 Fax: +49-211-96855-55

● France ANRITSU S.A.

9, Avenue du Québec Z.A. de Courtabœuf 91951 Les
 Ulis Cedex, France
 Phone: +33-1-60-92-15-50
 Fax: +33-1-64-46-10-65

● Italy ANRITSU S.p.A.

Via Elio Vittorini, 129, 00144 Roma EUR, Italy
 Phone: +39-06-509-9711
 Fax: +39-06-502-24-25

● Sweden ANRITSU AB

Botvid Center, Fittja Backe 1-3 145 84 Stockholm,
 Sweden
 Phone: +46-853470700
 Fax: +46-853470730

● Spain ANRITSU ELECTRÓNICA, S.A.

Europa Empresarial Edificio Londres, Planta 1, Oficina
 6 C/ Playa de Liencres, 2 28230 Las Rozas. Madrid,
 Spain
 Phone: +34-91-6404460
 Fax: +34-91-6404461

● Singapore ANRITSU PTE LTD.

6, New Industrial Rd., #06-01/02, Hoe Huat Industrial
 Building, Singapore 536199
 Phone: +65-282-2400
 Fax: +65-282-2533

● Hong Kong ANRITSU COMPANY LTD.

Suite 719, 7/F., Chinachem Golden Plaza, 77 Mody
 Road, Tsimshatsui East, Kowloon, Hong Kong, China
 Phone: +852-2301-4980
 Fax: +852-2301-3545

● Korea ANRITSU CORPORATION

14F Hyun Juk Bldg. 832-41, Yeoksam-dong,
 Kangnam-ku, Seoul, Korea
 Phone: +82-2-553-6603
 Fax: +82-2-553-6604-5

● Australia ANRITSU PTY LTD.

Unit 3/170 Forster Road Mt. Waverley, Victoria, 3149,
 Australia
 Phone: +61-3-9558-8177
 Fax: +61-3-9558-8255

● Taiwan ANRITSU COMPANY INC.

6F, 96, Sec. 3, Chien Kou North Rd. Taipei, Taiwan
 Phone: +886-2-2515-6050
 Fax: +886-2-2509-5519