

# MX177601A

## SDH/SONET Pattern Editor

(For MP1775A Pulse Pattern Generator, MP1776A Error Detector)

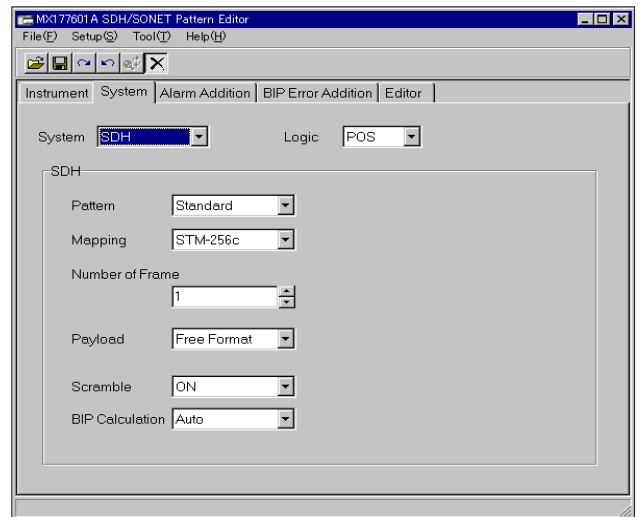
MX177601A controls the MP1775A Pulse Pattern Generator and MP1776A Error Detector to generate frame pattern conforming to SDH/SONET standards.

### Generating the SDH/SONET pattern

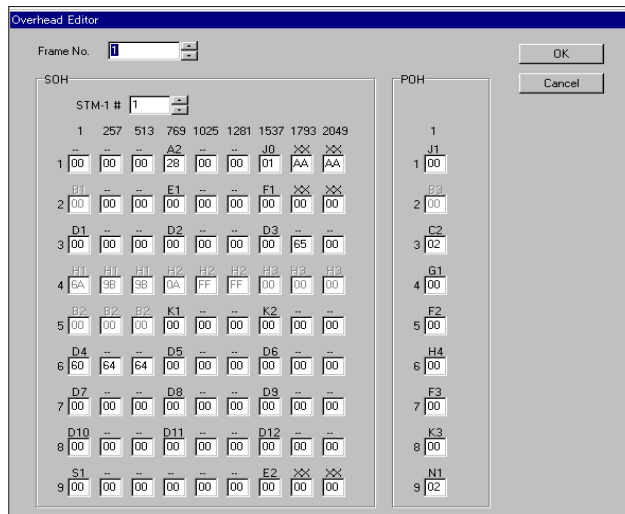
MX177601A conforms to ITU-T G.707/Bellcore Standard and generates SDH/SONET patterns of STM-1 to STM-256c and STS-3c to STS-768c. For STM-256c/STS-768c, a maximum of 6 frames of patterns is generated. Also, MX177601A features an exclusive editing function for OH and whole area.

### Generating arbitrary patterns

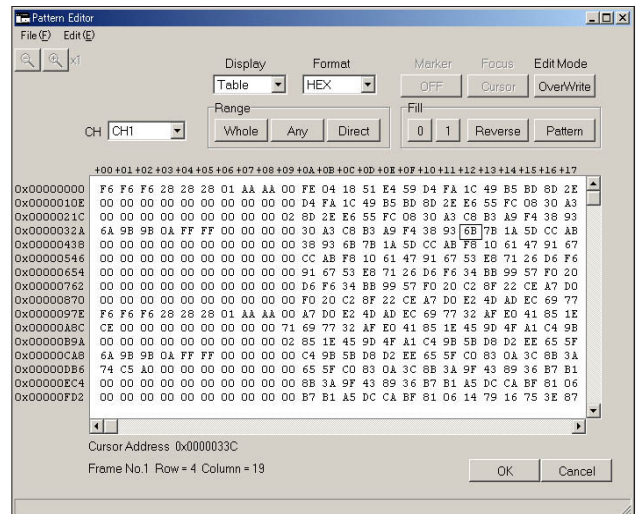
MX177601A provides an arbitrary pattern edition function with improved operability.



Main



Overhead editor



Pattern editor

# Specifications

Required system	Computer: IBM-PC/AT or full compatible, CPU: Pentium 200 MHz or higher, OS: Windows 95/98/2000/NT4.0, Memory: 128 MB or more Display Resolution: 800 x 600 or more; Display colors: 256 or more FDD: 3.5-inch (1.44 MB), Hard disk space: 100 MB or more GPIB: National Instruments-made GPIB interface (PCMCIA-GPIB or AT-GPIB/TNT series boards are recommended.)
Functions	SDH/SONET pattern editor Mapping: SDH [MP1775A/MP1776A] STM-N (N = 1, 4c, 12c, 16c, 32c, 64c, 256c) SONET [MP1775A/MP1776A] STS-N (N = 3c, 12c, 48c, 192c, 768c) Pattern edit: Arbitrary editing of program patterns (PRBS pattern can be inserted in the payload.), time indication, table indication/edit Payload: Free format, ALL 0, ALL 1, PRBS 2 <sup>n</sup> - 1 (n = 7, 9, 11, 15, 20, 20z, 23, 31) [Pattern repetition up to the length of all frames] CID pattern: Available (Conforming to ITU-TG.958) Frame repetition: Maximum 6 frames (at STM-256c or STS-768c) Alarm addition: Alarm addition conforming to SDH/SONET Standard SDH: [items:OOF/LOF, MS-AIS, MS-RDI, MS-REI, MS-AIS, HP-RDI, HP-REI] SONET: [items:OOF/LOF, AIS-L, RDI-L, REI-L, AIS-P, RDI-P, REI-P] BIP error addition: Generates parity errors of B1, B2, and B3 B1, B2, and B3 calculation: Automatic calculation Scramble: ON/OFF OH editor: All byte edits are possible except B1,B2,B3,H1,H2,H3. Pointer (H1,H2,H3) is fixed value.

Windows is a registered trademark of Microsoft Corporation in the United States and other countries. IBM and AT are registered trademarks of International Business Machines. Pentium is a registered trademark of Intel Corporation. PCMCIA-GPIB and AT-GPIB/TNT are registered trademarks of National Instruments.

## Ordering Information

Please specify the model/order number, name and quantity when ordering.

Model/Order No.	Name
MX177601A	<b>Software</b> SDH/SONET Pattern Editor
W1870AE	<b>Standard accessory</b> MX177601A operation manual: 1 copy

# Anritsu

Specifications are subject to change without notice.

### ANRITSU CORPORATION

1800 Onna, Atsugi-shi, Kanagawa, 243-8555 Japan  
Phone: +81-46-223-1111  
Fax: +81-46-296-1264

### • U.S.A.

#### ANRITSU COMPANY

#### TX OFFICE SALES AND SERVICE

1155 East Collins Blvd., Richardson, TX 75081, U.S.A.  
Toll Free: 1-800-ANRITSU (267-4878)  
Phone: +1-972-644-1777  
Fax: +1-972-644-3416

### • Canada

#### ANRITSU ELECTRONICS LTD.

700 Silver Seven Road, Suite 120, Kanata,  
ON K2V 1C3, Canada  
Phone: +1-613-591-2003  
Fax: +1-613-591-1006

### • Brasil

#### ANRITSU ELETRÔNICA LTDA.

Praca Amadeu Amaral, 27 - 1 andar  
01327-010 - Paraiso, Sao Paulo, Brazil  
Phone: +55-11-3283-2511  
Fax: +55-11-3886940

### • U.K.

#### ANRITSU LTD.

200 Capability Green, Luton, Bedfordshire LU1 3LU, U.K.  
Phone: +44-1582-433280  
Fax: +44-1582-731303

### • Germany

#### ANRITSU GmbH

Grafenberger Allee 54-56, 40237 Düsseldorf, Germany  
Phone: +49-211-96855-0  
Fax: +49-211-96855-55

### • France

#### ANRITSU S.A.

9, Avenue du Québec Z.A. de Courtaubœuf 91951 Les  
Ulis Cedex, France  
Phone: +33-1-60-92-15-50  
Fax: +33-1-64-46-10-65

### • Italy

#### ANRITSU S.p.A.

Via Elio Vittorini, 129, 00144 Roma EUR, Italy  
Phone: +39-06-509-9711  
Fax: +39-06-502-2425

### • Sweden

#### ANRITSU AB

Borgafjordsgatan 13 164 40 Kista, Sweden  
Phone: +46-853470700  
Fax: +46-853470730

### • Singapore

#### ANRITSU PTE LTD.

10, Hoe Chiang Road #07-01/02, Keppel Towers,  
Singapore 089315  
Phone: +65-6282-2400  
Fax: +65-6282-2533

### • Hong Kong

#### ANRITSU COMPANY LTD.

Suite 923, 9/F., Chinachem Golden Plaza, 77 Mody  
Road, Tsimshatsui East, Kowloon, Hong Kong, China  
Phone: +852-2301-4980  
Fax: +852-2301-3545

### • P. R. China

#### ANRITSU COMPANY LTD.

#### Beijing Representative Office

Room 1515, Beijing Fortune Building, No. 5 North Road,  
the East 3rd Ring Road, Chao-Yang District  
Beijing 100004, P.R. China  
Phone: +86-10-6590-9230

### • Korea

#### ANRITSU CORPORATION

8F Hyun Juk Bldg. 832-41, Yeoksam-dong,  
Kangnam-ku, Seoul, 135-080, Korea  
Phone: +82-2-553-6603  
Fax: +82-2-553-6604

### • Australia

#### ANRITSU PTY LTD.

Unit 3/170 Forster Road Mt. Waverley, Victoria, 3149,  
Australia  
Phone: +61-3-9558-8177  
Fax: +61-3-9558-8255

### • Taiwan

#### ANRITSU COMPANY INC.

7F, No. 316, Sec. 1, NeiHu Rd., Taipei, Taiwan  
Phone: +886-2-8751-1816  
Fax: +886-2-8751-1817

040620