

MX268031B

W-CDMA Automatic Measurement Software

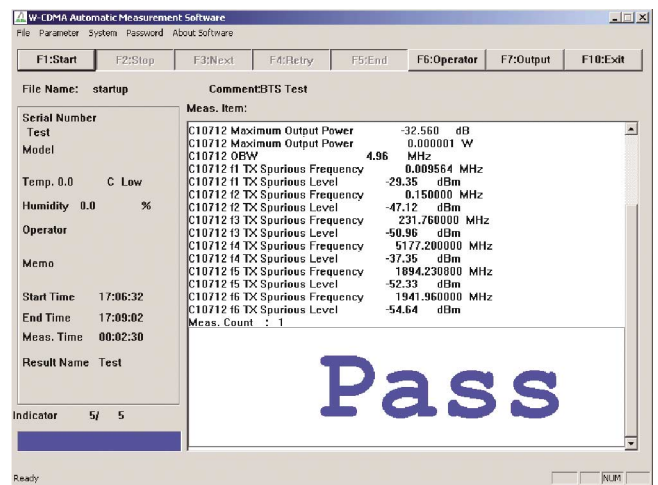
(for MS8608A/MS8609A Digital Mobile Radio Transmitter Tester)

–Simple operation & High speed measurement–

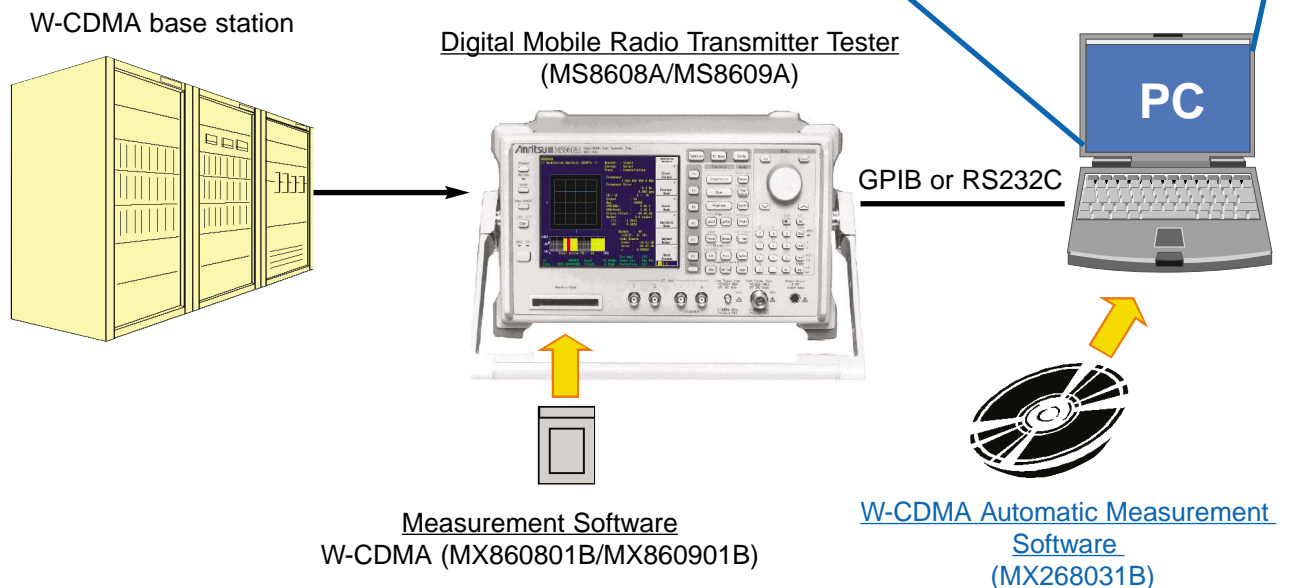
The MX268031B W-CDMA Automatic Measurement Software brings automated Tx testing of base stations conforming to W-CDMA system with simple operations.

Automated measurement is achieved by installing the dedicated measurement software in Digital Mobile Radio Transmitter Tester and controlling the transmitter tester remotely from the PC that installs MX268031B.

Also, the setting parameters for automated measurement can be saved/recalled and measured results can be saved/printed. This greatly shortens the time for construction and maintenance of base stations.



■ Configuration



Usage

(1) Parameter settings

The screenshot displays several configuration windows for radio measurements:

- Radio Setting:** Configures channel frequency (0.000 MHz), channel (11203/4), and RF loss (40.00 dB).
- Occupied Bandwidth:** Sets the measure method to Spectrum and average to 5.00 MHz.
- Frequency/Modulation Accuracy:** Configures carrier frequency error spec to 0.050 ppm.
- Maximum Output Power:** Sets reference output power to 43.00 dBm.
- TX Spurious Emissions:** A table showing spurious emission levels across various frequencies and offsets.
- Code Domain:** Sets peak code domain error spec to -33.00 dB.
- Adjacent Channel Leakage Power Ratio:** Sets the measure method to Spectrum(All) and spec to -45.00 dB.

* Each parameter above can be saved/recalled.

(2) Select the item to measure

The 'Item' dialog box shows the following selection options:

- Maximum Output Power
- Code Domain
- Occupied Bandwidth
- Adjacent Channel Leakage Power
- Frequency/Modulation Accuracy
- TX Spurious Emissions

Four columns of checkboxes (labeled 1, 2, 3, 4) are present to the right of the list items.

(3) Measurement start

The measurement results window shows a 'Pass' result. The 'Result Name' is 'Test' and the 'Indicator' is '5/ 5'. The 'Measured result (Pass)' is displayed in large blue text.

Measured result (Pass)

The measurement results window shows a 'Fail' result. The 'Result Name' is 'Test' and the 'Indicator' is '5/ 5'. The 'Measured result (Fail)' is displayed in large red text.

Measured result (Fail)

Specifications

Item	Summary
<p>Operating Environment</p> <p>Model OS Display CPU Memory HDD Interface</p> <p>Printer</p> <p>Target Equipment (Mainframe and options)</p> <p>Target Equipment (Software)</p>	<p>IBM-PC or compatible models MS-Windows 2000 (English ver.) Resolution: ≥1024x768 dots, 256 colors or more Pentium Processor 300 MHz or more ≥64 MB Disk Space 100 MB or more Either of the followings RS232C: D-SUB 9 pin Cross Cable with both ends female USB: e.g. USB-RSAQ2 (I-O DATA DEVICE, INC.) GPIB: e.g. PCMCIA-GPIB (National Instruments Corp.)</p> <p>The model which operates with the OS specified above and is printable on A4-size papers</p> <p>MS8608A Digital Mobile Radio Transmitter Tester MS8608A-04 Digital Resolution Bandwidth MS8608A-30 LPF or MS8609A Digital Mobile Radio Transmitter Tester MS8609A-04 Digital Resolution Bandwidth MS8609A-30 LPF</p> <p>MX860801B W-CDMA Measurement Software Version 4.0 or later or MX860901B W-CDMA Measurement Software Version 4.0 or later</p>
<p>Functions</p> <p>Test items</p> <p>Measurement Execution Mode</p> <p>Parameter Save/Recall</p> <p>Result Output</p>	<ul style="list-style-type: none"> • Maximum Output Power: Power Meter, Transmitter Power, Channel Power, Burst Power • Code Domain • Occupied Bandwidth: FFT, Spectrum • Adjacent Channel Leakage Power: Modulation, Spectrum(All) • Frequency/Modulation Accuracy: MOD, CW • TX Spurious Emissions <p>Continuous: Measurement does not stop until all selected items are measured per channel. NG Stop: Measurement stops at the item with "NG". NG End: Measurement is terminated if the item being measured is "NG". Item Stop: Measurement stops per item. Nonstop: Measurement does not stop until all selected items are measured for all specified channels.</p> <p>Save/Recall of setting values and item selection as measurement parameters</p> <p>Screen display Printout Memory disk save XXX.DAT Measurement result file XXX.CSV Waveform data file XXX.BMP Waveform figure file * CSV and BMP files of waveforms are not created if Wave Mode is not selected for each measurement.</p>

Windows is a registered trademark of Microsoft Corporation in the United States and other countries.

IBM is a registered trademark of International Business Machines Corporation.

Ordering Information

Please specify the model/order number, name and quantity when ordering.

Model/Order No.	Name	Remarks
MX268031B	–Mainframe– W-CDMA Automatic Measurement Software (English version)	CD-R (includes the contents below)
W2237AE	–Standard Accessories– W-CDMA Automatic Measurement Software Operation Manual Readme.txt	(CD-R) (CD-R), Installation procedures

Anritsu

Specifications are subject to change without notice.

ANRITSU CORPORATION

1800 Onna, Atsugi-shi, Kanagawa, 243-8555 Japan
Phone: +81-46-223-1111
Fax: +81-46-296-1264

● U.S.A.

ANRITSU COMPANY

TX OFFICE SALES AND SERVICE

1155 East Collins Blvd., Richardson, TX 75081, U.S.A.
Toll Free: 1-800-ANRITSU (267-4878)
Phone: +1-972-644-1777
Fax: +1-972-644-3416

● Canada

ANRITSU ELECTRONICS LTD.

700 Silver Seven Road, Suite 120, Kanata,
ON K2V 1C3, Canada
Phone: +1-613-591-2003
Fax: +1-613-591-1006

● Brasil

ANRITSU ELETRÔNICA LTDA.

Praca Amadeu Amaral, 27 - 1 andar
01327-010 - Paraiso, Sao Paulo, Brazil
Phone: +55-11-3283-2511
Fax: +55-11-3886940

● U.K.

ANRITSU LTD.

200 Capability Green, Luton, Bedfordshire LU1 3LU, U.K.
Phone: +44-1582-433280
Fax: +44-1582-731303

● Germany

ANRITSU GmbH

Grafenberger Allee 54-56, 40237 Düsseldorf, Germany
Phone: +49-211-96855-0
Fax: +49-211-96855-55

● France

ANRITSU S.A.

9, Avenue du Québec Z.A. de Courtabœuf 91951 Les
Ulis Cedex, France
Phone: +33-1-60-92-15-50
Fax: +33-1-64-46-10-65

● Italy

ANRITSU S.p.A.

Via Elio Vittorini, 129, 00144 Roma EUR, Italy
Phone: +39-06-509-9711
Fax: +39-06-502-2425

● Sweden

ANRITSU AB

Fagelviksvagen 9E S145 84 Stockholm, Sweden
Phone: +46-853470700
Fax: +46-853470730

● Singapore

ANRITSU PTE LTD.

10, Hoe Chiang Road #07-01/02, Keppel Towers,
Singapore 089315
Phone: +65-6282-2400
Fax: +65-6282-2533

● Hong Kong

ANRITSU COMPANY LTD.

Suite 923, 9/F., Chinachem Golden Plaza, 77 Mody
Road, Tsimshatsui East, Kowloon, Hong Kong, China
Phone: +852-2301-4980
Fax: +852-2301-3545

● P. R. China

ANRITSU COMPANY LTD.

Beijing Representative Office

Room 1515, Beijing Fortune Building, No. 5 North
Road, the East 3rd Ring Road, Chao-Yang District
Beijing 100004, P.R. China
Phone: +86-10-6590-9230

● Korea

ANRITSU CORPORATION

8F Hyun Juk Bldg. 832-41, Yeoksam-dong,
Kangnam-ku, Seoul, 135-080, Korea
Phone: +82-2-553-6603
Fax: +82-2-553-6604

● Australia

ANRITSU PTY LTD.

Unit 3/170 Forster Road Mt. Waverley, Victoria, 3149,
Australia
Phone: +61-3-9558-8177
Fax: +61-3-9558-8255

● Taiwan

ANRITSU COMPANY INC.

7F, No. 316, Sec. 1, NeiHu Rd., Taipei, Taiwan
Phone: +886-2-8751-1816
Fax: +886-2-8751-1817

031113



Printed with environment-friendly
vegetable soybean oil ink.



Printed on 100%
Recycled Paper