

CMA5000

SPECIFICATIONS

Gigabit Ethernet - 5700-SW3-OPT



5700-SW3-OPT Capture and decode software

Capture and Decode

This software option will allow users of the CMA5000 Gigabit Ethernet module to capture Ethernet frames from the network and decode as needed for in depth troubleshooting. The capturing of traffic in real time and the ability to view the decoded information can quickly identify the source of network problems. This decoded information shows all the conversations and most importantly can identify a device or devices that are causing the problem. The user is then able to see the hexadecimal representation of each frame captured. In addition the user is able to filter the traffic so that only certain frames are captured and triggers are definable so that the capture can be started at the correct time. This feature provides ultimate detail for advanced troubleshooting.

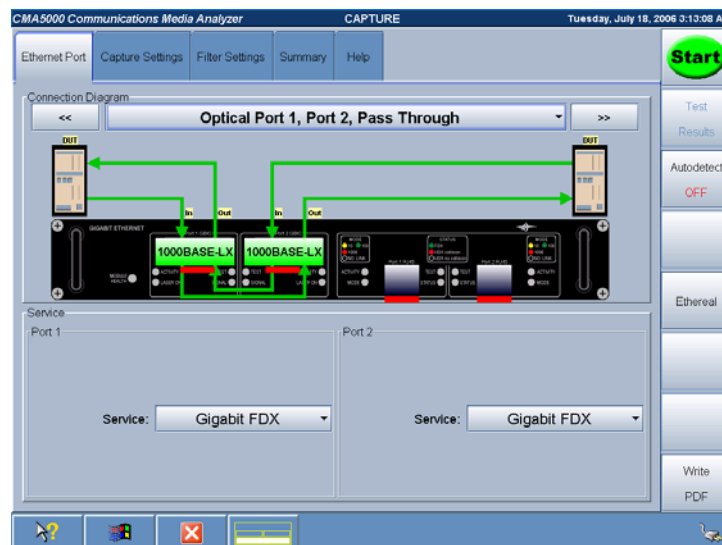


Fig.1: User defined capture settings allow for multiple ways of capturing data including pass through mode

Filtering

The CMA5000 filtering function can be used to allow the user to capture only the necessary frames. The filters include both layer 2 and layer 3 protocols. This filtering is a fast and easy way to capture only the protocol of concern and eliminate capturing unnecessary data. The user can also filter by address so that frames have to be both of the defined frame type and match the filter type, to get captured.

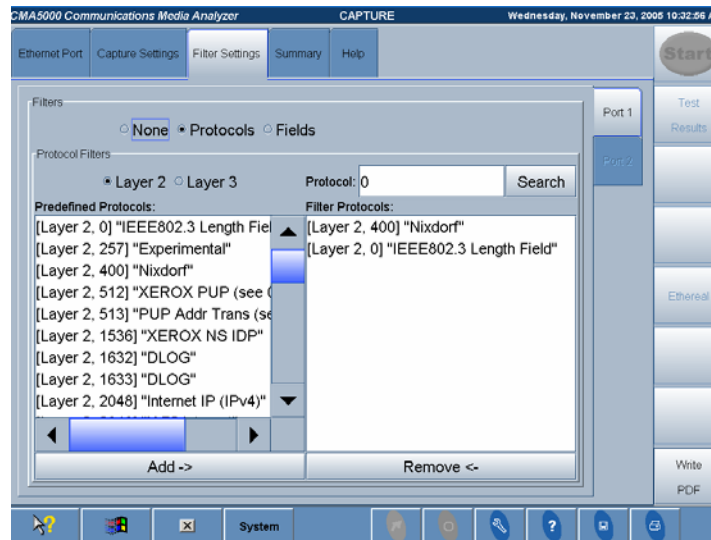


Fig 2: Filtering allows the user to capture only the frames and protocols of interest

Results

The results screen is split into three panes. The top pane contains the Address table which provides Frame number, Source MAC/IP addresses and Destination MAC/IP addresses for all the captured frames. The lower left pane contains details on the Packet Information, Ethernet Frame, and other header information depending on the protocol. The lower right pane contains the hexadecimal representation of the selected captured frame. The split screen provides quick results yet provides the detail test results.

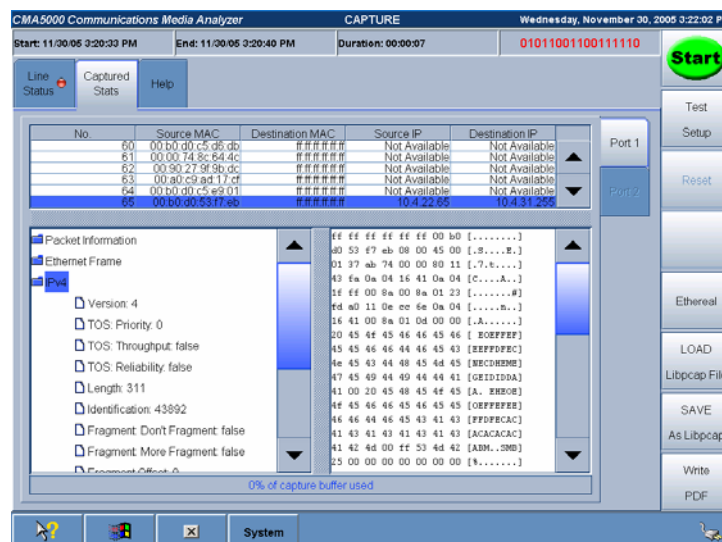


Fig 3: Results Screen – 3 pane detailed results screen provide intuitive results for troubleshooting

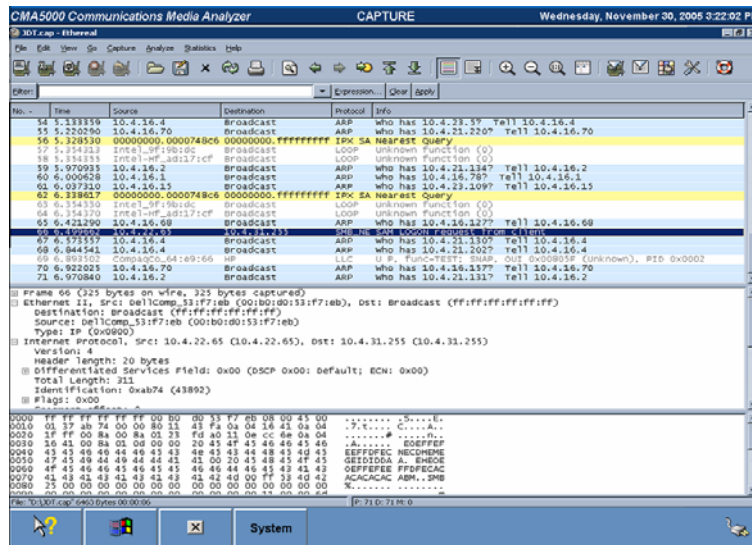


Fig.4: Captured files can be loaded directly into Ethereal on the CMA5000

| Specifications | |
|---------------------|--|
| Buffer Size | 128MB per port |
| Supported Protocols | ARP, ICMP, HTTP, FTP, IPV4, IPV6, POP3, SMTP, SSH, TCP, UDP, Telnet |
| Capture Settings | <p>Save to file The results can be saved in Libpcap format to enable viewing in Ethereal or any other standard protocol analyzer.</p> <p>Wrap On Full When the buffer is full, starts writing from the beginning</p> <p>Stop On Full When the buffer is full, stops capturing</p> <p>Real time Real time capturing, the frames are decoded and displayed on GUI in real time.</p> <p>Pass through Mode</p> |
| File Format | Libpcap |

| Ordering Information | |
|----------------------|--|
| 5700-SW3-OPT | Capture and decode software option for 5700-00x-GIGE |

Anritsu Corporation

5-1-1 Onna, Atsugi-shi, Kanagawa, 243-8555
Japan
Phone: +81-46-223-1111
Fax: +81-46-296-1264

• **U.S.A.**

Anritsu Company

1155 East Collins Blvd., Richardson, TX 75081,
U.S.A.
Toll Free: 1-800-ANRITSU (267-4878)
Phone: +1-972-644-1777
Fax: +1-972-671-1877

• **Canada**

Anritsu Electronics Ltd.

700 Silver Seven Road, Suite 120, Kanata,
Ontario K2V 1C3, Canada
Phone: +1-613-591-2003
Fax: +1-613-591-1006

• **Brazil**

Anritsu Eletrônica Ltda.

Praca Amadeu Amaral, 27 - 1 Andar
01327-010-Paraiso-São Paulo-Brazil
Phone: +55-11-3283-2511
Fax: +55-11-3288-6940

• **U.K.**

Anritsu EMEA Ltd.

200 Capability Green, Luton, Bedfordshire LU1
3LU, U.K.
Phone: +44-1582-433280
Fax: +44-1582-731303

• **Germany**

Anritsu GmbH

Nemetschek Haus, Konrad-Zuse-Platz 1
81829 München, Germany
Phone: +49 89 442308-0
Fax: +49 89 442308-55

• **France**

Anritsu S.A.

9, Avenue du Québec Z.A. de Courtabœuf
91951 Les Ulis Cedex, France
Phone: +33-1-60-92-15-50
Fax: +33-1-64-46-10-65

• **Italy**

Anritsu S.p.A.

Via Elio Vittorini, 129, 00144 Roma, Italy
Phone: +39-6-509-9711
Fax: +39-6-502-2425

• **Sweden**

Anritsu AB

Borgafjordsgatan 13, 164 40 KISTA, Sweden
Phone: +46-853470700
Fax: +46-853470730

• **Finland**

Anritsu AB

Teknobulevardi 3-5, FI-01530 Vantaa, Finland
Phone: +358-20-741-8100
Fax: +358-20-741-8111

• **Denmark**

Anritsu A/S

Kirkebjerg Allé 90 DK-2605 Brøndby, Denmark
Phone: +45-72112200
Fax: +45-72112210

• **Singapore**

Anritsu Pte Ltd.

10, Hoe Chiang Road, #07-01/02, Keppel
Towers,
Singapore 089315
Phone: +65-6282-2400
Fax: +65-6282-2533

• **P.R. China (Hong Kong)**

Anritsu Company Ltd.

Suite 923, 9/F., Chinachem Golden Plaza, 77
Mody Road,
Tsimshatsui East, Kowloon, Hong Kong, P.R.
China
Phone: +852-2301-4980
Fax: +852-2301-3545

• **P.R. China (Beijing)**

Anritsu Company Ltd.

Beijing Representative Office

Room 1515, Beijing Fortune Building,
No. 5, Dong-San-Huan Bei Road,
Chao-Yang District, Beijing 10004, P.R. China
Phone: +86-10-6590-9230
Fax: +86-10-6590-9235

• **Korea**

Anritsu Corporation, Ltd.

8F Hyunjuk Building, 832-41, Yeoksam dong,
Kangnam-ku, Seoul, 135-080, Korea
Phone: +82-2-553-6603
Fax: +82-2-553-6604

• **Australia**

Anritsu Pty Ltd.

Unit 21 / 270 Ferntree Gully Road,
Notting Hill, Victoria 3168 Australia
Phone: +61-3-9558-8177
Fax: +61-3-9558-8255

• **Taiwan**

Anritsu Company Inc.

7F, No. 316, Sec. 1, Neihu Rd., Taipei 114,
Taiwan
Phone: +886-2-8751-1816
Fax: +886-2-8751-1817

• **India**

Anritsu Corporation

India Liaison Office

Unit No. S-3, Second Floor, Esteem Red Cross
Bhavan,
No. 26, Race Course Road, Bangalore 560
001, India
Phone: +91-80-30944707
Fax: +91-80-22356648