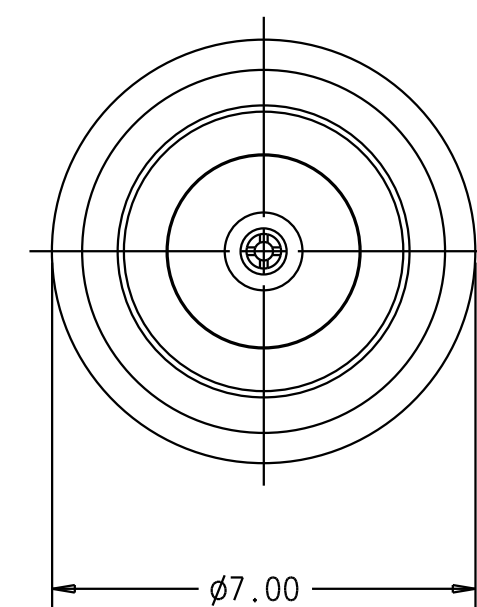
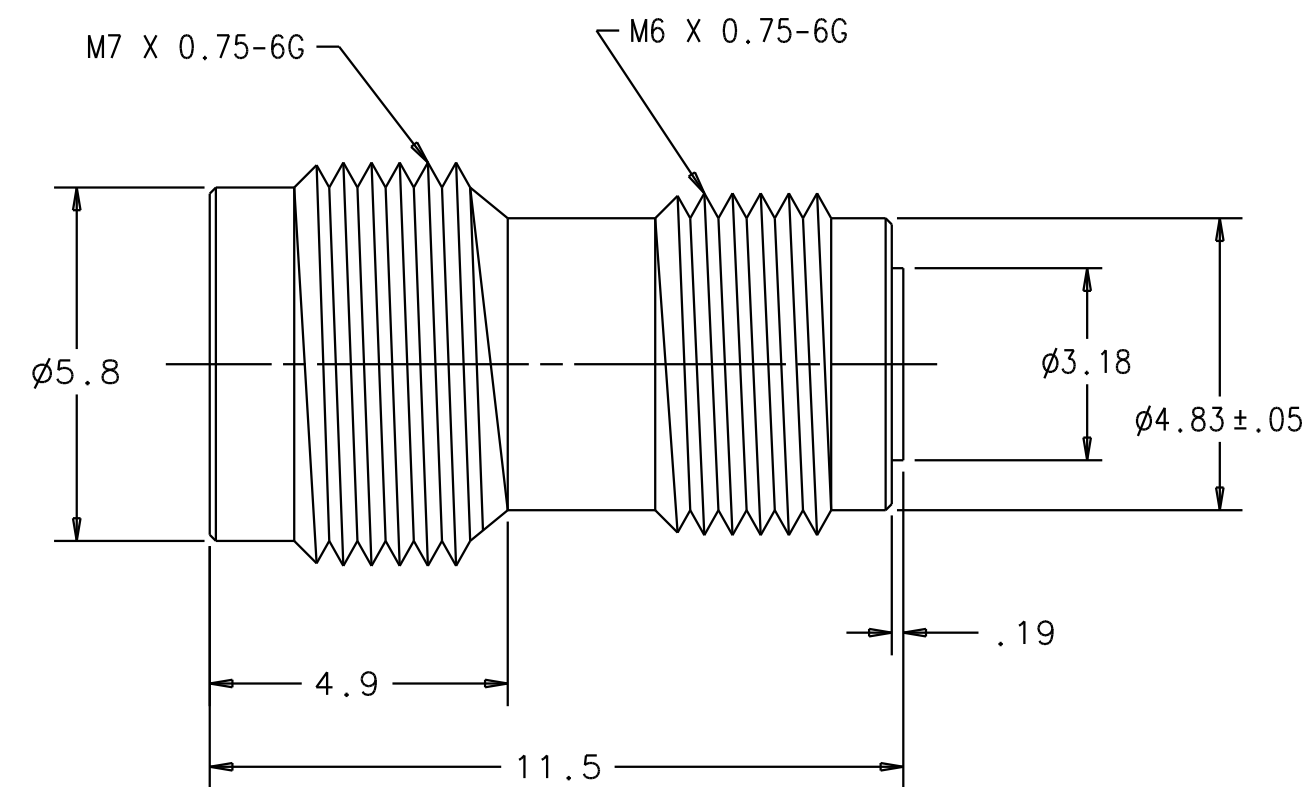


ZONE	REV	DESCRIPTION OF REVISION	ECN NO.	BY	DATE	APPROVED
	A	INITIAL ISSUE	LAB	M&M	08/04	A.T.



NOTES:

1. ELECTRICAL
 - 1.1. FREQUENCY RANGE:DC TO 65 GHz
 - 1.2. VSWR:1.58
2. MECHANICAL
 - 2.1. FRONT-SIDE PIN DEPTH:0.000 TO -0.130
3. OPERATING TEMPERATURE:-55°C TO +125°C
4. ENVIRONMENTAL
 - 4.1. TEMPERATURE SHOCK:25°C TO -55°C AND 25°C TO +125°C, METHOD 107G, CONDITION B
 - 4.2. MECHANICAL SHOCK:100Gpeak SAWTOOTH, METHOD 213, TEST CONDITION I
 - 4.3. HUMIDITY:95% AT 40°C, 96 HOURS, TEST 103B, CONDITION B
 - 4.4. VIBRATION=SINEWAVE:10Hz TO 2000Hz, 0.06*DA, METHOD 204, TEST CONDITION D
RANDOM:50Hz TO 2000Hz, 11.6 Grms, Pwr SPECTRAL DENSITY 0.1Grms²/Hz, METHOD 214, TEST CONDITION I LETTER D
 - 4.5. SALT SPRAY:5% CONCENTRATION FOR 48 HOURS, METHOD 101D, CONDITION B
 - 4.6. VOLTAGE WITHSTANDING:500Vac RMS, 60 SECONDS, METHOD 301
5. MATERIALS:
 - 5.1. OUTER CONDUCTOR:STAINLESS STEEL
 - 5.2. BEAD HOLDER:BeCu, GOLD PLATED OVER NICKEL
 - 5.3. CENTER CONDUCTOR:HEAT TREATED BeCu, GOLD PLATED OVER NICKEL
 - 5.4. SUPPORT BEAD:TEFLON

DIMENSIONS ARE FOR REFERENCE ONLY

UNLESS OTHERWISE SPECIFIED, ALL DIMENSIONS ARE IN MILLIMETERS (mm)	DRAWN	M. MEZA	DATE	02/24/04	MATERIAL: SEE SEPARATE PRODUCT STRUCTURE	
	CHECKED	A. SHARMA	DATE	08/04	490 JARVIS DRIVE MORGAN HILL, CA. 95037	
APPROVED	A. THOMAS	DATE	08/04	TITLE		
SEE PRODUCT STRUCTURE	TOLERANCES: UNLESS OTHERWISE SPECIFIED			V102F OUTLINE		
ALL INFORMATION SHOWN ON THIS SPECIFICATION IS PROPRIETARY INFORMATION OF ANRITSU COMPANY	1 PLACES	ANGLES		FSCM NO. 20944		
	2 PLACES	SURFACE FINISH		DRAWING NO. 62462		REV A
3 PLACES	FINISH		SCALE 8/1		UNDER ECN CONTROL 08/04 BY PL M.E	SHEET 1 OF 1
DO NOT SCALE DRAWING						