

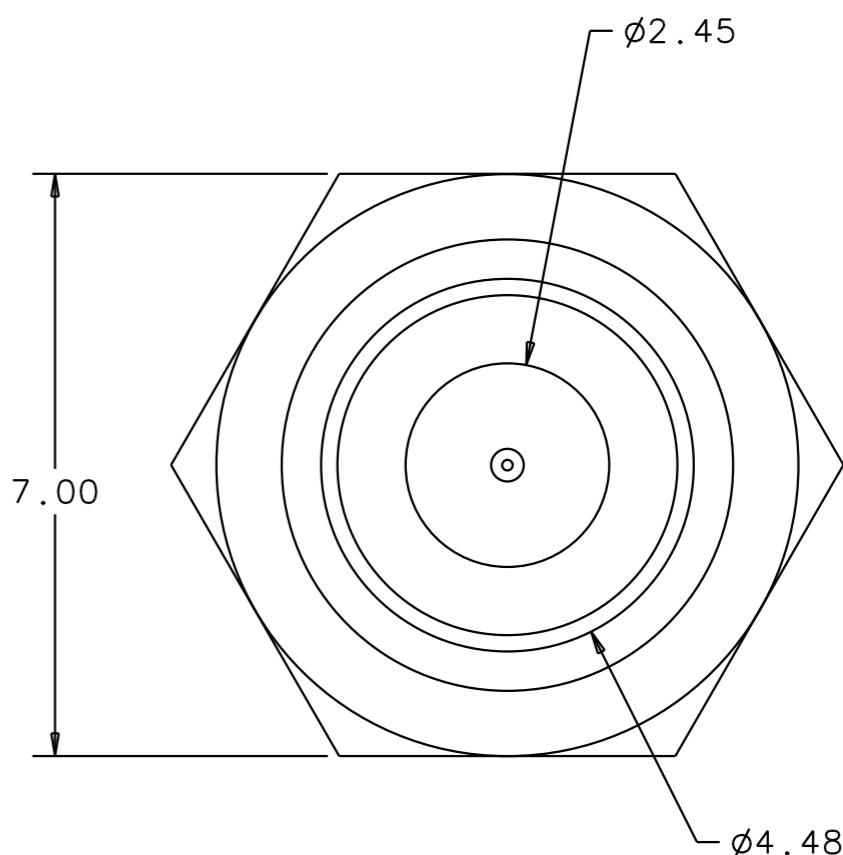
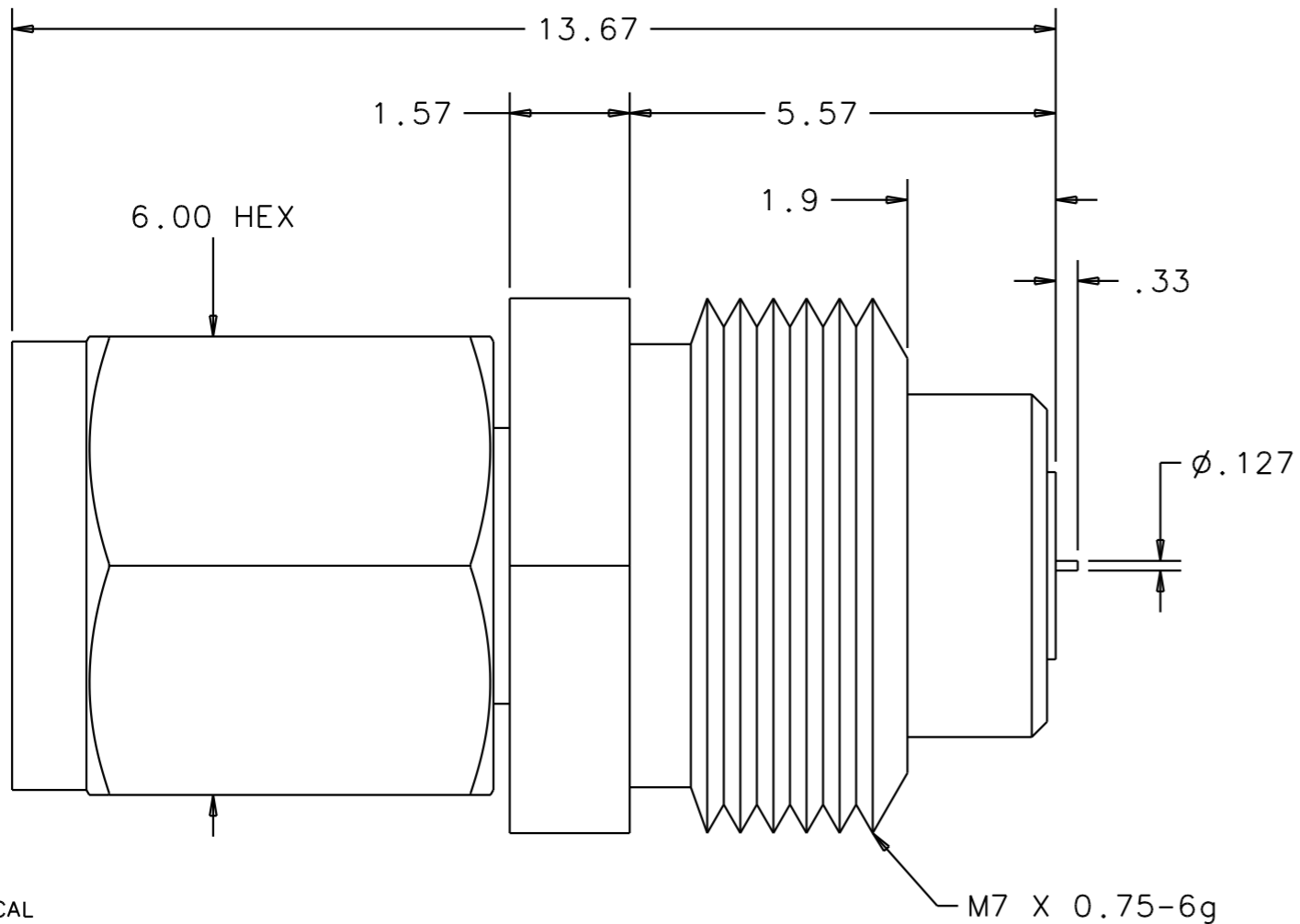
1

2

3

4

ZONE	REV	DESCRIPTION OF REVISION	ECN NO.	BY	DATE	APPROVED
	A	INITIAL ISSUE	N/A	AT	01/04	AT
	B	ADDED NOTE REVISED TOL BLK	MC5022	AT	01/05	AT



NOTES:

1. ELECTRICAL
 - 1.1. FREQUENCY RANGE: DC TO 110 GHZ
 - 1.2. IMPEDANCE: 50 OHMS
 - 1.3. INSERTION LOSS: 0.70 DB TYPICAL
 - 1.4. VSWR: 1.38 TYPICAL
 - 1.5. INSULATION RESISTANCE: > 1200 M OHMS
 - 1.6. CENTER CONDUCTOR CONTACT RESISTANCE: 6 MILLI OHMS TYPICAL
 - 1.7. MAXIMUM POWER CW: 6 W
2. MECHANICAL
 - 2.1. FRONTSIDE PIN DEPTH: 0 TO 0.076 MM MAXIMUM
 - 2.2. BACKSIDE PIN PROTRUSION: 0.33 MM TYPICAL
 - 2.3. COUPLING NUT TIGHTENING TORQUE: 4 IN-LB MAXIMUM
 - 2.4. TORQUE W1 CONNECTOR INSTALLATION: 5 IN-LB MAXIMUM
3. OPERATING TEMPERATURE: 0° TO +85° C
4. ENVIRONMENTAL
 - 4.1. STORAGE TEMPERATURE: -54° TO +125° C
 - 4.2. TEMPERATURE SHOCK: 25° C TO -40° AND 25° TO +125° C, METHOD 107G, CONDITION B
 - 4.3. HUMIDITY: 95% AT 40° C, 96 HOURS, TEST 103B, CONDITION B
 - 4.4. MECHANICAL SHOCK: 100 GRAM PEAK SAWTOOTH, METHOD 213, TEST CONDITION I
 - 4.5. VIBRATION: SINEWAVE: 10 HZ TO 2000 HZ, 0.06" DA, METHOD 204, TEST CONDITION D. RANDOM: 50 HZ TO 2000 HZ, 11.6 GRMS, PWR SPECTRAL DENSITY 0.1 GRMS μ /HZ, METHOD 214, TEST CONDITION I, LETTER D
 - 4.6. SALT SPRAY: 5% CONCENTRATION FOR 48 HOURS, METHOD 101D, CONDITION B
 - 4.7. VOLTAGE WITHSTANDING: 500 VAC RMS, 60 SECONDS, METHOD 301
5. MATERIALS
 - 5.1. OUTER CONDUCTOR: BERYLLIUM-COPPER, GOLD PLATED OVER NICKEL PER MIL-G-45204C
 - 5.2. CENTER CONDUCTOR: BERYLLIUM-COPPER, GOLD PLATED OVER NICKEL PER MIL-G-45204C
 - 5.3. COUPLING NUT: PASSIVATED STAINLESS STEEL
 - 5.4. PLASTIC SUPPORT BEAD DIELECTRIC: PROPRIETARY

DIMENSIONS ARE FOR REFERENCE ONLY

UNLESS OTHERWISE SPECIFIED, ALL DIMENSIONS ARE IN MILLIMETERS (mm)	DRAWN	A. THOMAS	DATE	10/03	MATERIAL:	
	CHECKED	A. SHARMA	DATE	10/03	490 JARVIS DRIVE MORGAN HILL, CA. 95037	
APPROVED	A. THOMAS	DATE	10/03	TITLE		
SEE PRODUCT STRUCTURE	TOLERANCES: UNLESS OTHERWISE SPECIFIED		W1-105M OUTLINE			
ALL INFORMATION SHOWN ON THIS SPECIFICATION IS PROPRIETARY INFORMATION OF ANRITSU COMPANY	0 PLACES	ANGLES	FSM NO. 20944			
	1 PLACES	SURFACE FINISH	DRAWING NO. 62245			
DO NOT SCALE DRAWING	2 PLACES		REV B			
	FINISH		SCALE 1/X			
			UNDER ECN CONTROL 10/03 BY HS M,E		DATE	SHEET 1 OF 1