

V Connector[®] Microstrip to V Male Flange Mount Connector Part Number V103M-012

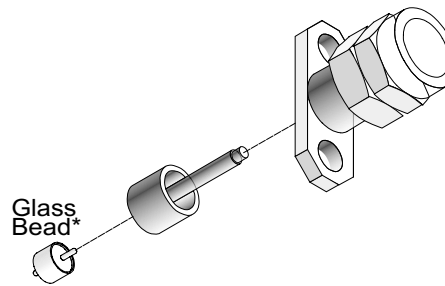


Figure 1. Male Flange Mount Connector, Unassembled

1. Tools And Materials

No special tools or materials are required for installation of the V103M-012 Flange Mount Connector.

2. Machining Dimensions

Machining dimensions for the mounting hole required for installation of the microstrip to V male flange-mount connector are provided in Figure 3 on reverse side of this page.

CAUTION

The three holes shown in Note 2 of Figure 3 must be concentric within ± 0.038 mm (1.5 mils). If they are not, connector performance will be degraded. To make this required concentricity easier to achieve, a custom-made Finishing Step Drill and Tap kit, Model 01-304, is available from Anritsu.

3. Installation Instructions

- a. The V103M-012 uses shims to precisely set the pin depth. If your V103M-012 is supplied with shims:
 - (1) Remove the center conductor and support bead assembly.
 - (2) Insert all shims.
 - (3) Reinsert the center conductor and support bead assembly.

- b. Install the V103M-012 onto the housing, making sure that the center conductor mates properly with the glass bead.
- c. Secure the outer conductor with two 2-56 inch or 2.2 mm metric screws. Tighten the screws to approximately 0.226 N-meters.

- d. When tightening the screws, use care to keep the flanges parallel to the housing.

NOTE

The flanges may not be flush with the housing after installation. This does not degrade connector performance. Be careful, however, not to overtighten the flange screws.

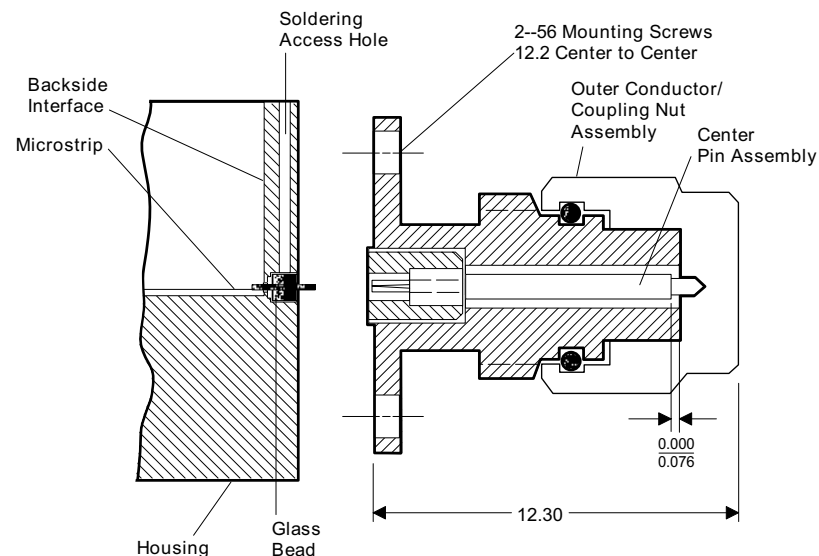


Figure 2. Flange Mount Assembly

NOTES.

1. ALL DIMENSIONS ARE IN mm.
2. THE CONCENTRICITY OF THE 1.676 AND 1.981 HOLES TO THE 0.711 DIA HOLE IS CRITICAL AND MUST BE HELD WITHIN $\pm 0.038\text{mm}$.
3. WITH THE MODEL 01-104 OR 01-108 STEP DRILL KITS, ALL OF THE REQUIRED CONCENTRIC HOLES CAN BE MACHINED AT THE SAME TIME USING A SINGLE BIT.
4. THE ORIENTATIONS OF THE FLANGES AND TAPPED MOUNTING-SCREW HOLES ARE FOR INFORMATION ONLY. IN PRACTICE, THE FLANGES SHOULD BE ROTATED 45 DEGREES AND THE HOLES DRILLED AND TAPPED AT THE 2 O'CLOCK AND 8 O'CLOCK POSITIONS.

* DIMENSION IS 0.152 (PIN RADIUS)
+ SUBSTRATE
+ SOLDER THICKNESS

** DIMENSION IS $0.889 \pm 0.050\text{mm}$ IF SLIDING CONTACTS ARE USED.

*** DIMENSION IS $0.838 \pm 0.025\text{mm}$ IF SLIDING CONTACTS ARE USED.

DIMENSION IS $1.575 \pm 0.050\text{mm}$ IF SLIDING CONTACTS ARE USED.

DIMENSION IS $2.311 \pm 0.050\text{mm}$ IF SLIDING CONTACTS ARE USED.

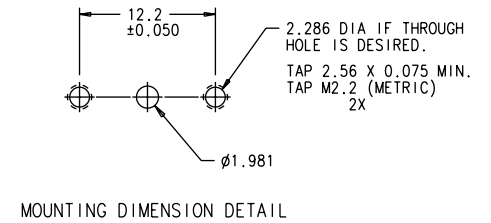
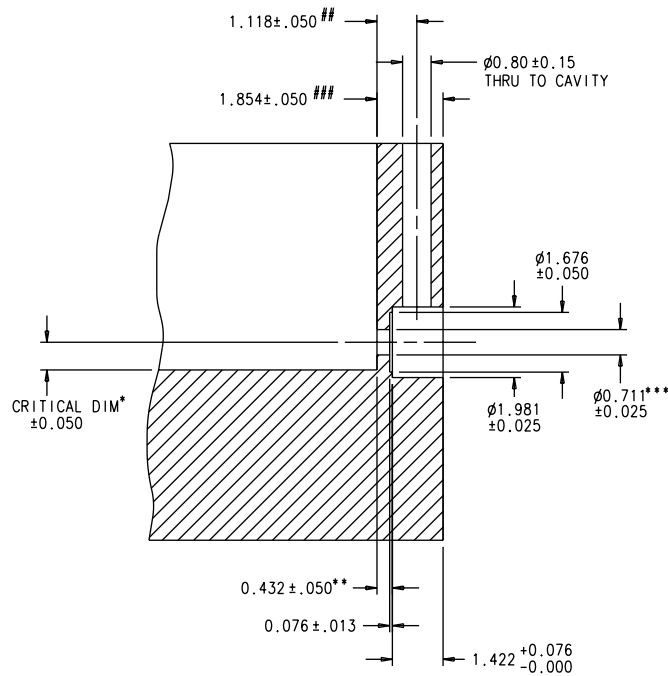


Figure 3. Machining Dimensions for V103M-012 Connector Mounting Holes

V Connector is a trademark of Anritsu Company.

Teflon is a registered trademark of E.I. Du Pont De Nemours and Company.

* Glass bead not supplied—Anritsu Part No. V100 or V100B.

Part Number: 10300-00041

Revision: A, Printed: September 2005

Copyright © 2005, Anritsu Company All rights reserved.

Anritsu

490 Jarvis Drive
Morgan Hill, California 95037-2809