

Quick Start Guide

Anritsu Tool Box™



Anritsu

Notes On Export Management

This product and its manuals may require an Export License or approval by the government of the product country of origin for re-export from your country.

Before you export this product or any of its manuals, please contact Anritsu Company to confirm whether or not these items are export-controlled.

When disposing of export-controlled items, the products and manuals need to be broken or shredded to such a degree that they cannot be unlawfully used for military purposes.

<https://www.anritsu.com/en-US/test-measurement/contact-us>

TRADEMARK ACKNOWLEDGMENTS

Anritsu Tool Box, Line Sweep Tools, and Master Software Tools are trademarks of Anritsu Company
Microsoft, Windows, and Windows Vista are registered trademarks of Microsoft Corporation.

NOTICE

Anritsu Company has prepared this manual for use by Anritsu Company personnel and customers as a guide for the proper installation, operation and maintenance of Anritsu Company equipment and computer programs. The drawings, specifications, and information contained herein are the property of Anritsu Company, and any unauthorized use or disclosure of these drawings, specifications, and information is prohibited; they shall not be reproduced, copied, or used in whole or in part as the basis for manufacture or sale of the equipment or software programs without the prior written consent of Anritsu Company.

For the latest service and sales information in your area, please visit:

<https://www.anritsu.com/en-US/test-measurement/contact-us>

Table of Contents

Chapter 1—Overview

- 1-1 Introduction. 1-1
- 1-2 Anritsu Tool Box. 1-1
- 1-3 The Anritsu Tool Box 1-2
 - Line Sweep Tools 1-2
 - Master Software Tools 1-2
 - Wireless Remote Tools 1-2
 - easyTest Tools 1-2
 - easyMap Tools 1-2

Chapter 2—Installing Anritsu Tool Box

- 2-1 System Requirements 2-1
- 2-2 Installation 2-1
 - Choose Programs 2-3

Chapter 1 — Quick Start Overview

1-1 Introduction

The Anritsu Tool Box™ provides a suite of software tools that maximize the Anritsu RF Handheld Instruments applications. This document provides an overview of the Anritsu Tool Box contents and Installation Instructions.

1-2 Anritsu Tool Box

The Anritsu Tool Box is a central location to open an Anritsu measurement file, visit the Anritsu web site, or launch an Anritsu software tool application. The Anritsu Tool Box utility screen is shown in [Figure 1-1](#).

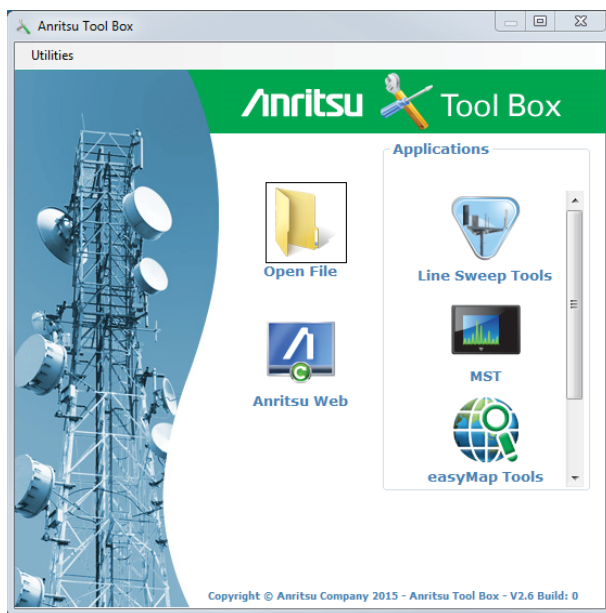


Figure 1-1. Anritsu Tool Box

1-3 The Anritsu Tool Box Tools

Anritsu Tool Box suite provides the following software tools:

Line Sweep Tools

- Analyze Cable, Antenna, and PIM traces, as well as generate reports. This works with DAT, VNA, and PIM files.

Master Software Tools

- Work with spectrum analyzer, interference analyzer, and transmitter test measurements as well as generate reports.

Wireless Remote Tools

- Remotely monitor and control many Anritsu handheld RF instruments over Wi-Fi or Ethernet cables.

easyTest Tools

- Create work instructions that can be ran on Anritsu handheld RF instruments.

easyMap Tools

- Create maps for Anritsu handheld spectrum analyzers to simplify coverage measurements and interference hunting.

For detailed information about a software tool application, refer to the Anritsu Website: <https://www.anritsu.com/en-US/test-measurement>.

Chapter 2 — Installing Anritsu Tool Box

2-1 System Requirements

- Microsoft® Windows® with (32 or 64 Bit), or (32 or 64 Bit) Operating System
- 1.0 GB of RAM
- 100 MB of available hard disk space
- Microsoft .NET Framework 3.5 SP1

2-2 Installation

To install the latest Anritsu Tool Box software, go to the Anritsu website at: <https://www.anritsu.com/en-US/test-measurement>

- If you select the Full Installer, internet access is not required while running.
- If you select the Web Installer, internet access is required while running.

Select the installation tab. Follow the on-screen instructions. The installation process will include several installation screens as shown in [Figure 2-1](#).



Figure 2-1. Installing Anritsu Tool Box

Choose Programs

During the installation process, an instruction screen will prompt you to choose the program(s) to download. See [Figure 2-2](#). The Anritsu Tool Box installer will then load your selected software programs to your system tray and will also create shortcut icons on your desktop.

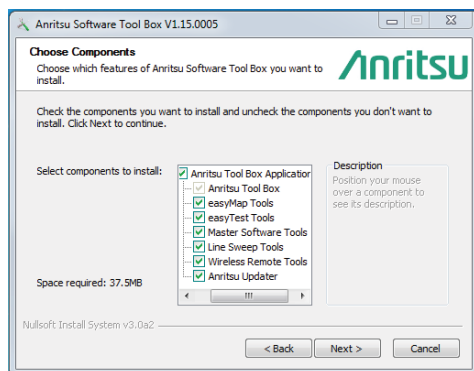


Figure 2-2. Anritsu Tool Box Program Selection Screen

For detailed information about a software tool application, refer to the Anritsu Website: <https://www.anritsu.com/en-US/test-measurement>.

Anritsu



10580-00327



C



Anritsu utilizes recycled paper and environmentally conscious inks and toner.

Anritsu Company
490 Jarvis Drive
Morgan Hill, CA 95037-2809
USA

<http://www.anritsu.com/>