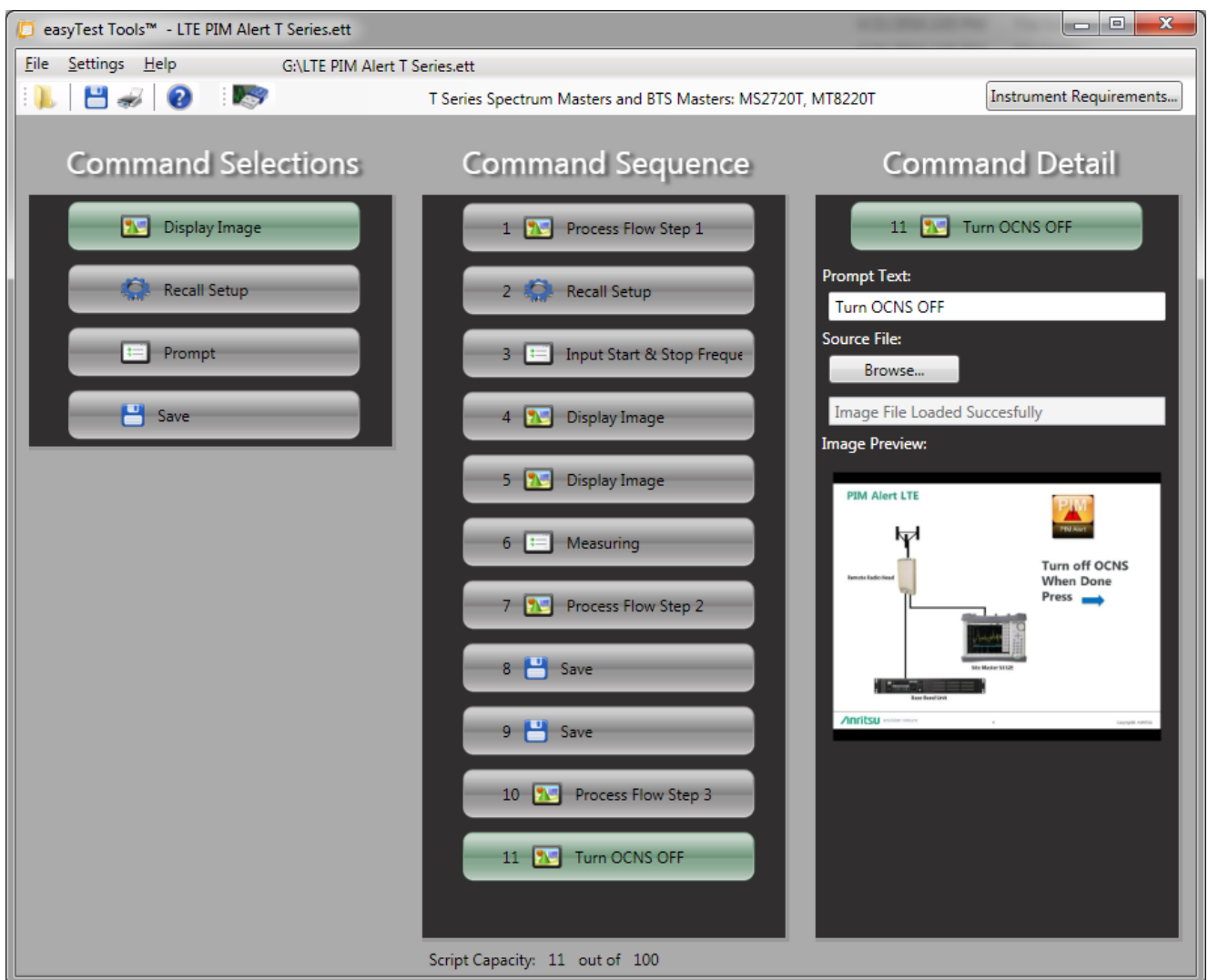


## Quick Start Guide

# Using easyTest Files

easyTest Tools™ (eTT) files provide you with a library of commands to be used in Anritsu handheld instruments. Developers use the easyTest Tools PC application to create a test sequence file that will be installed onto an Anritsu handheld instrument via a USB memory device. Once installed, the easyTest file will display on-screen step-by-step instructions to the instrument user, simplifying the process of operating the instrument and completing measurements quickly and accurately.

The easyTest files can be downloaded from the Anritsu web site or obtained via email and other file transfer protocols. Once you have the easyTest file, follow the procedures on the next page to install and start using the easyTest file in your instrument. The easyTest Tools™ PC application (shown below) can be downloaded from [www.anritsu.com](http://www.anritsu.com) as part of the Anritsu Tool Box and used to create your own custom test sequences.



## Load the easyTest File Into the Instrument

1. After downloading the easyTest file (.ett) from the Anritsu web site, copy it from your browser download folder onto a USB memory device (double clicking the easyTest file generally displays text/code and will **not** install the easyTest file into your instrument).
2. Copy the easyTest file from the USB memory device into the instrument. Refer to your instrument user guide for file copying operations between a USB memory device and the instrument.

### Note

Once the easyTest file is copied to the instrument's internal memory, the file can easily be saved as a favorite on the instrument main menu by pressing and holding the easyTest file name until the menu grid is displayed, and then the desired location for the easyTest icon can be selected. The easyTest icon will be named the same as the copied file name. Make sure the easyTest file is saved into the instrument's internal memory before creating a shortcut, and then use the internal memory saved easyTest file to create a shortcut.

## Execute the easyTest File Test Sequence

1. Press the **Menu** button on the instrument keypad.
2. Execute the easyTest file in one of two ways:
  - If you have saved the file as a favorite, press the named **easyTest** icon.
  - If you want to select the easyTest file from a list of saved easyTest files, press the **easyTest** icon (shown at right) on the menu of the Anritsu handheld instrument, then select the desired easyTest file (.ett) from the **Recall** dialog using the up/down arrow buttons or knob, and then press **Enter**.



The first step of the easyTest sequence will then be executed.

3. Follow the instruction prompts on the **Status/Instruction** bar as shown in the example below, and then press either the **Next Step** button on the touch screen (shown below) or press the right arrow button on the instrument to continue to the next step.

Step 1 of 8 Display Image Install Short into the connector at the antenna end of the transmi |Next Step

4. After completing the last step, an **Attention** dialog will inform you that the easyTest sequence is complete.

