

User Guide

BlueStart

Example Application using the MT8855A Class Library

The Anritsu logo is located in the bottom right corner of the page. It consists of the word "Anritsu" in a bold, sans-serif font, with a stylized, slanted 'A'.

Anritsu Company
490 Jarvis Drive
Morgan Hill, CA 95037-2809
USA

P/N: 13000-00303
Revision: B
Created: May 2010
Copyright 2010 Anritsu Company

Chapter 1 — Overview

1-1 What is BlueStart?

BlueStart is a simple application designed to help familiarize developers with the use of the MT8855 class library.

This chapter describes the installation process and explains how to prepare the Visual Studio project installed with the source files so that BlueStart can be compiled successfully.

Chapter 2 — Installation

2-1 Installing BlueStart

1. Insert the product CD into the drive on the PC. The [MT8855A *Bluetooth* Audio Test Set] window displays automatically.
2. Click "BlueStart" in the contents list.
3. The BlueStart setup wizard displays as shown below. Click [Next>].

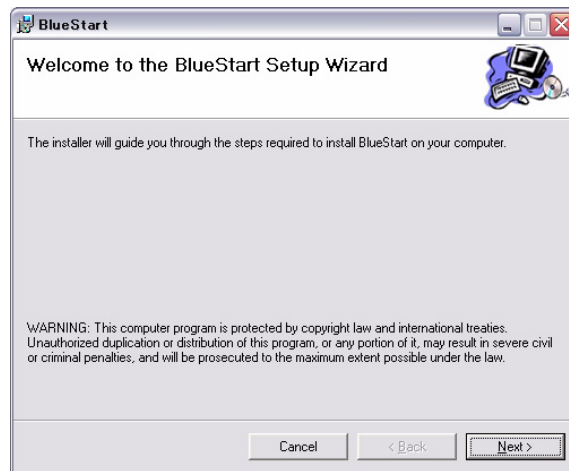


Figure 2-1. BlueStart Setup Wizard

The "Licence Agreement" dialog displays. Read the agreement and if you agree to the conditions, select "I Agree" and click [Next>].



Figure 2-2. License Agreement

A dialog displays asking the user to select whether to install the source files. Click "Include source files" and click [Next>].

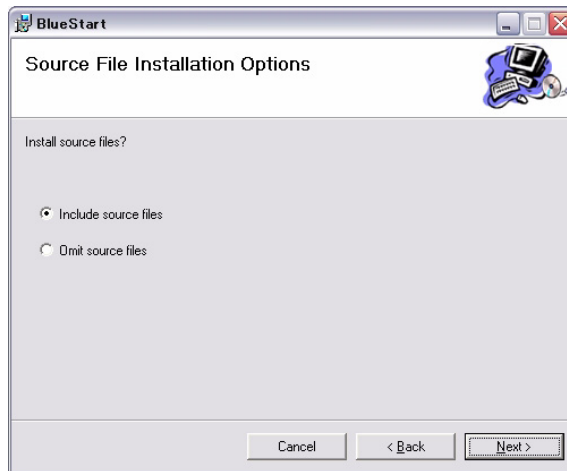


Figure 2-3. Source File Installation Options

A dialog displays asking the user to specify the folder to which BlueStart will be installed. By default, BlueStart is installed to C:\Program Files\BlueStart. Click [Next>] to install to the default directory, or click [Browse...] to specify a different location for installation.

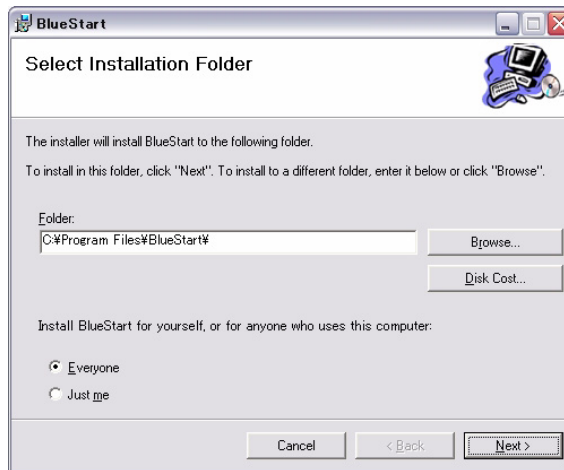


Figure 2-4. Select Installation Folder

Click [Next>] at the "Confirm Installation" dialog to start the installation.

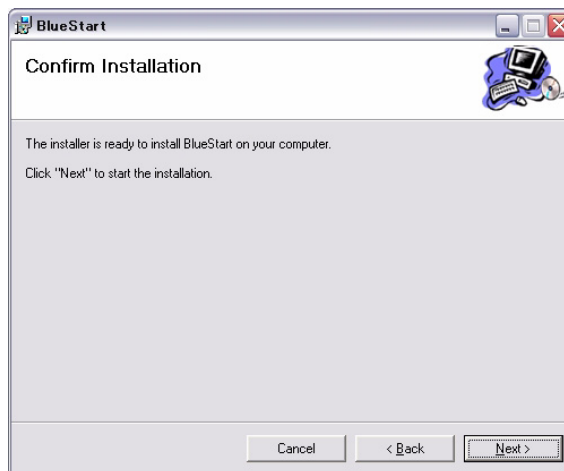


Figure 2-5. Confirm Installation

The progress of the installation is shown in the dialog below.

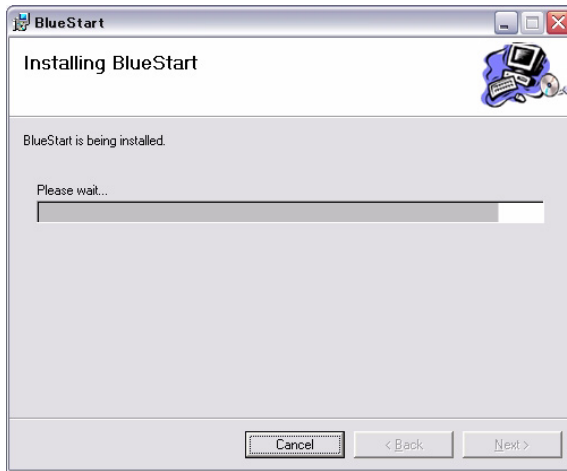


Figure 2-6. Installing BlueStart

The dialog shown below displays when the installation is complete.

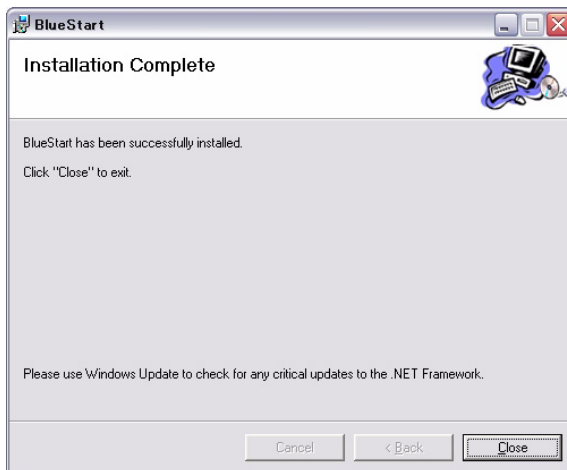


Figure 2-7. Installation Complete

Note

Before running BlueStart:

- Turn on the MT8855A and connect it to a USB port on the PC.
- Connect an A2DP headset, or similar device, to the line-in sockets on the MT8855A.
- Configure the headset to be discoverable by a *Bluetooth* inquiry.

Chapter 3 — Source Files

3-1 Using the BlueStart Source Files

The following sections of the document explain how to use the source files to adapt and rebuild BlueStart as required.

Note It is assumed that the user has a copy of Visual Studio 2005 (or later) installed.

The BlueStart source files are installed to [c:\Program Files\BlueStart\BlueStart Source Files].

1. Open [c:\Program Files\BlueStart\BlueStart Source Files].
2. Double-click “BlueStart.vbproj” to open the project in Visual Studio.
3. Double-click “My Project” in the Solution Explorer and select the “References” tab.
4. Locate the “MT8855” reference in [c:\Program Files\BlueStart].

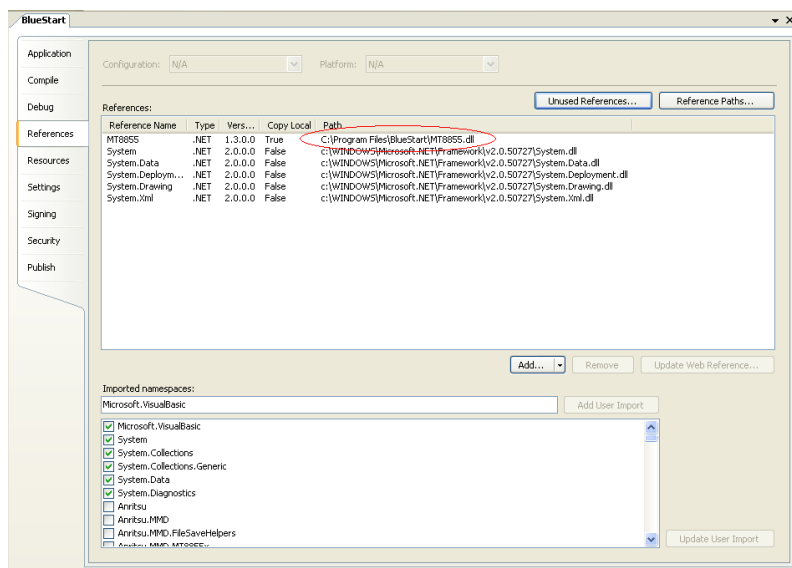


Figure 3-1. Reference File

Note If BlueStart was installed to a location other than [c:\Program Files], the reference to the class library will not be valid and there will be errors in the error list. In this case, remove the reference to MT8855, click “Add...” and create a reference to the correct location.

5. Assuming that BlueStart will initially be run with the Visual Studio debugger, ensure that Debug mode is selected.

6. Build and execute the project.

```
*****
* BlueStart U1.0.1.0 *
*****
An example program in Visual Basic 2005 for use with the
Anritsu MT8855A Audio Test Set

Establishing USB connection to test set:
Number of test sets found: 0
msg: Unable to load DLL 'UsbDriver.dll': The specified module could not be found
. <Exception from HRESULT: 0x8007007E>
Reported status: NoTestSetConnected
Press Return key to exit program.
-
```

Figure 3-2. Missing Module

The project will not execute correctly (as shown above) because an essential file, “UsbDriver.dll”, is not handled automatically by Visual Studio. This file must now be copied into the project manually.

7. Copy the “UsbDriver.dll” from [c:\Program Files\BlueStart] to [c:\Program Files\BlueStart\BlueStart Source Files\bin\Debug].

Note	If the project is subsequently built in “Release” mode, a release folder is created in BlueStart Source Files\bin. “UsbDriver.dll” must also be copied to that folder.
-------------	--

8. Check that the equipment is correctly configured:

- Connect the MT8855A to a USB port on the PC.
- Turn on the MT8855A.
- Connect an A2DP headset, or similar device, to the line-in sockets on the MT8855A.
- Configure the headset to be discoverable by a *Bluetooth* inquiry.

9. Build and run the project.

When the program is built and executed, it connects to the MT8855A, establishes a *Bluetooth* connection to the DUT and performs measurements. Typical output is shown below.

```
*****
* BlueStart V1.0.1.0 *
*****
An example program in Visual Basic 2005 for use with the
Anritsu MT8855A Audio Test Set

Establishing USB connection to test set:
Number of test sets found: 1
Connecting to test set:
Model: MT8855A, Serial Number: P003
Current test set state: Idle

Do you wish to monitor test set events <Y or N>?
y
Bluetooth inquiry in progress .
>>> EVENT <<< - Bluetooth inquiry status has changed: InquiryUpdated
>>> EVENT <<< - Bluetooth inquiry status has changed: InquiryComplete
Connecting to DUT: 001D82049204
Connecting ---
>>> EVENT <<< - Bluetooth connection state has changed: PairingComplete
..
```

Figure 3-3. BlueStart Output

Note

Further information on using the MT8855 class library to control the MT8855A can be found in the Help file.

Chapter 4 — Help Files

4-1 Viewing the Help File

The help file, “MT8855A Class Library Help.chm”, is installed in the BlueStart folder. It can be opened by double-clicking the desktop icon or selecting Start > Anritsu > MT8855A Class Library Help.

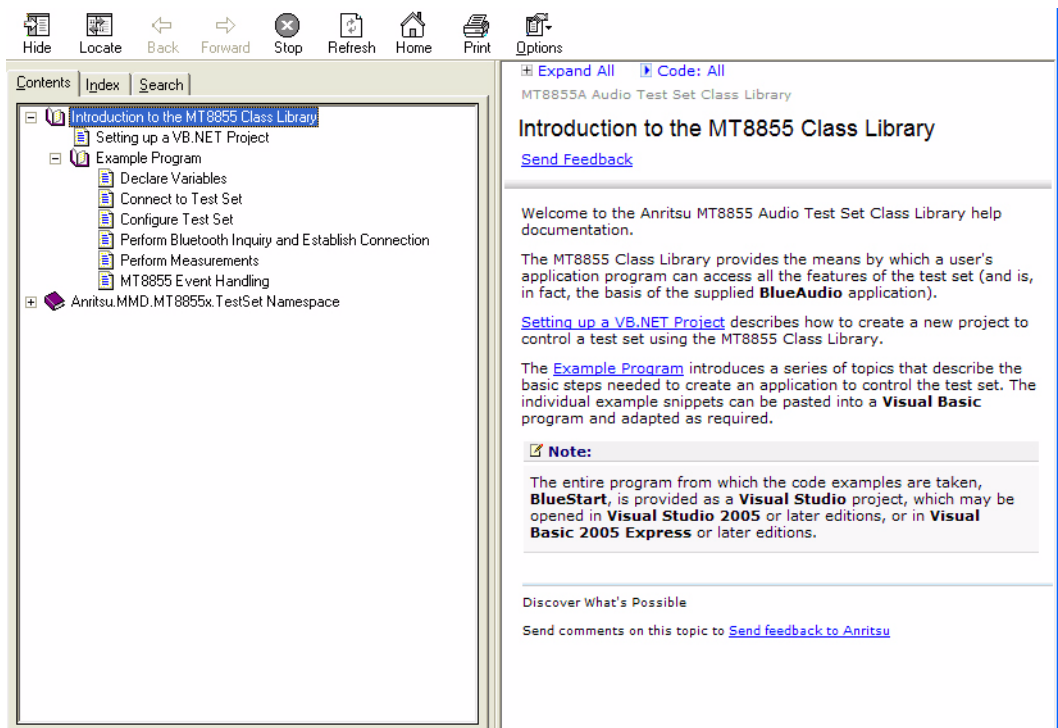


Figure 4-1. Class Library Help

When viewed on the “Contents” tab, the Help is divided into two sections:

- “Introduction to the MT8855 Class Library”.
The section is a basic introduction to controlling the test set using the class library. It includes BlueStart programming examples.
- “Anritsu.MMD.MT8855x.TestSet Namespace”.
This section contains detailed information on the class library.

4-2 Help File Troubleshooting

If the right-side Help frame states that “Navigation to the website was canceled”, the Help file content is being blocked. The most likely reason for this is that the help file was opened from a network drive.

Following a security update by Microsoft in 2005 it may not be possible to view the content of CHM help files from a network drive.

<p>AUSTRALIA ANRITSU PTY. LTD. Unit 3, 170 Foster Road Mt Waverley, VIC 3149 Australia Telephone: +61-3-9558-8177 Fax: +61-3-9558-8255</p>	<p>BRAZIL ANRITSU ELETRONICA LTDA. Praca Amadeu Amaral, 27 - 1 Andar 01327-010-Paraiso-São Paulo- Brazil Telephone: +55-11-3283-2511 Fax: +55-11-3288-6940</p>	<p>CANADA 700 Silver Seven Road, Suite 120, Kanata, ON K2V 1C3, Canada Telephone: +1-613-591-2003 Fax: +1-613-591-1006</p>
<p>CHINA ANRITSU BEIJING SERVICE CENTER Room 1515, Beijing Fortune Building, No. 5, Dong-San-Huan Bei Road, Chao-Yang District, Beijing 10004, P.R. China Telephone: +86-10-6590-9230 Fax: +86-10-6590-9235</p>	<p>FINLAND Teknobulevardi 3-5, FI-01530 VANTAA, Finland Telephone: +358-20-741-8100 Fax: +358-20-741-8111</p>	<p>FRANCE 9, Avenue du Québec Z.A. de Courtabœuf 91951 Les Ulis Cedex, France Telephone: +33-1-60-92-15-50 Fax: +33-1-64-46-10-65</p>
<p>GERMANY Anritsu GmbH Nemetschek Haus Konrad-Zuse-Platz 1 81829 München Germany Telephone: +49 (0) 89 442308-0 Fax : +49 (0) 89 442308-55</p>	<p>HONG KONG ANRITSU LIMITED LTD. Units 4 & 5, 28th Floor, Greenfield Tower, Concordia Plaza, No. 1 Science Museum Road, Tsim Sha Tsui East, Kowloon, Hong Kong Telephone: +852-2301-4980 Fax: +852-2301-3545</p>	<p>ITALY ANRITSU Sp.A Via Elio Vittorini 129, 00144 Roma EUR, Italy Telephone: +39-06-509-9711 Fax: +39-06-502-24-25</p>
<p>JAPAN 5-1-1 Onna, Atsugi-shi, Kanagawa 243-8555 Japan Telephone: +81-46-223-1111 Fax: +81-46-296-1264</p>	<p>KOREA ANRITSU CORPORATION LTD. 8F Hyunjuk Building, 832-41, Yeoksam Dong, Kangnam-ku, Seoul, 135-080, Korea Telephone: +82-2-553-6603 Fax: +82-2-553-6604</p>	<p>SINGAPORE 60 Alexandra Terrace, # 02-08 The Comtech (Lobby A) Singapore 118502 Telephone: +65-6282 2400 Fax : +65-6282 2533</p>
<p>SWEDEN Anritsu AB Borgafjordsgatan 13, 164 40 KISTA, Sweden Telephone: +46-8-534-707-00 Fax: +46-8-534-707-30</p>	<p>TAIWAN ANRITSU CO., LTD. 7F, NO.316, Sec.1 NeiHu Rd., Taipei, Taiwan, R.O.C Telephone: +886-2-8751-1816 Fax: +886-2-8751-1817</p>	<p>UNITED KINGDOM Anritsu LTD 200 Capability Green, Luton, Bedfordshire, LU1 3LU U.K. Telephone: +44-1582-433200 Fax: +44-1582-731303</p>
<p>UNITED STATES 1155 East Collins Blvd., Richardson, TX 75081, U.S.A. Toll Free: 1-800-ANRITSU (267-4878) Telephone: +1-972-644-1777 Fax: +1-972-671-1877</p>		