

PRODUCT INTRODUCTION

MP1776A
Error Detector



Copyright © 2001 by ANRITSU CORPORATION

The contents of this manual shall not be disclosed in any way or reproduced in any media without the express written permission of Anritsu Corporation.

Introduction of the MP1776A Error Detector

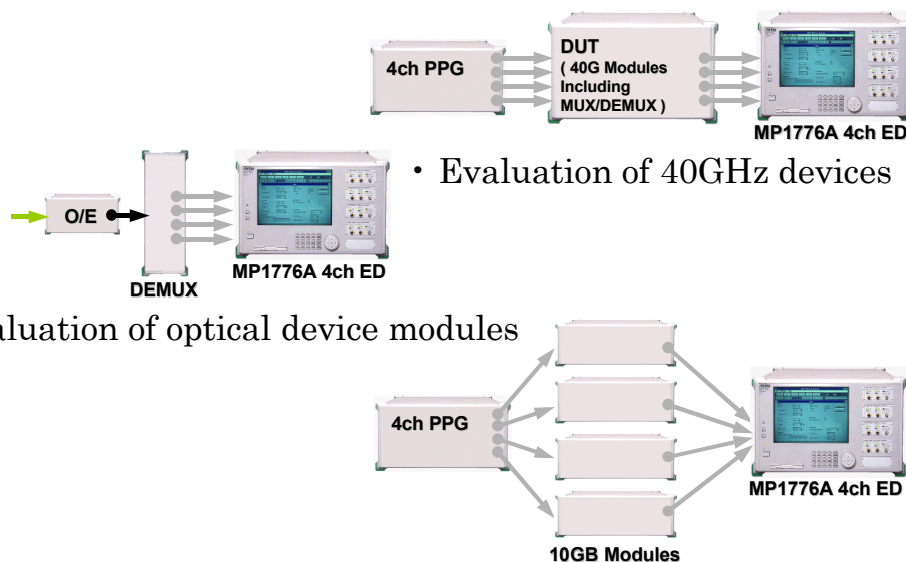
MP1776A Front View



MP1776A / Main features

- For 40Gbit/s transmission equipment, module and the evaluation of the device
- Support 100MHz to 12.5GHz frequency
- 4-channels all in one box
- Independent measurement of 4-channels
- Measurement for 43GHz with DEMUX
- Support PRBS patterns from 2^7-1 to $2^{31}-1$
- Max. 32 Mbit programmable pattern at 4-channels combined mode (corresponding six frames of STM-256/STS-768)
- Support Burst data BER measurement for optical circulating loop test
- Good operability with the touch panel and GUI

Various measurement

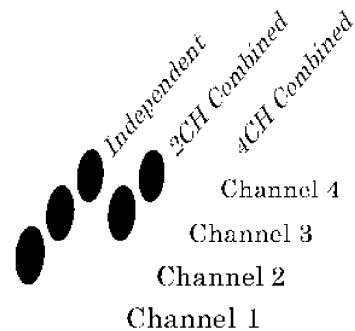


- Evaluation of 40GHz devices
- Evaluation of optical device modules
- Parallel measurement of multiple modules

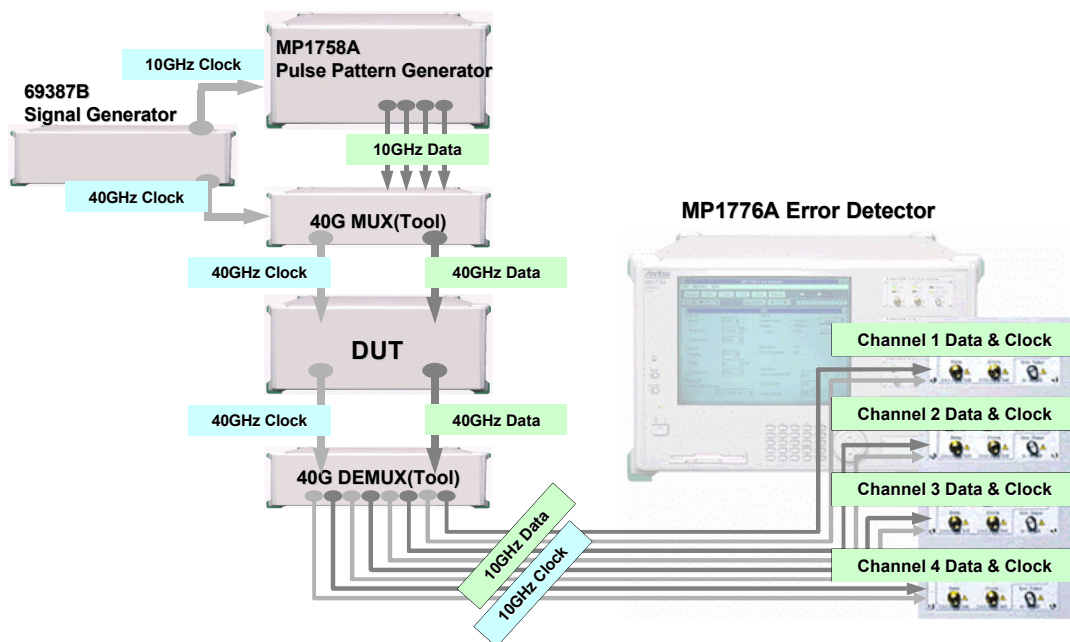
Three measurement modes

Provide three measurement modes. The measurement from 25GHz to 50GHz is possible with MUX/DEMUX at the combined mode which correlates with two or four ED.

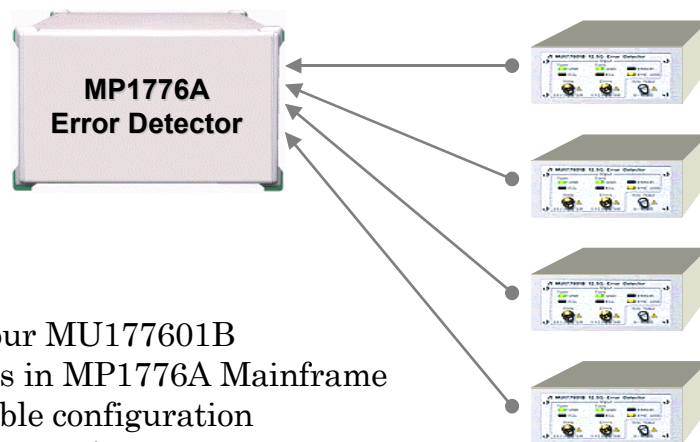
- **Independent Mode**
Each ED Independent Mode
- **2CH Combined Mode**
Correlative two units
- **4CH Combined Mode**
Correlative four units



System Configuration for 40GHz Modules



Channel configuration for each purpose



- Max. four MU177601B ED units in MP1776A Mainframe
- Selectable configuration less than 4 units
- Provide Data, Clock and Trigger output for each unit
- Four unit independent measurement

**MU177601B
12.5Gb/s
Error Detector Units**

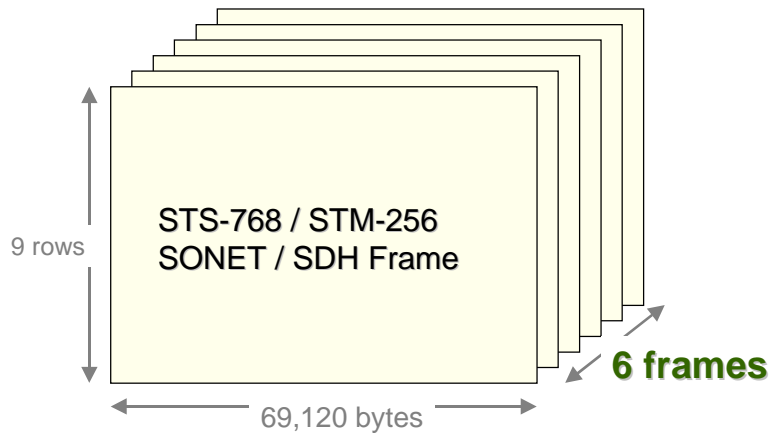
Support PRBS pattern max. $2^{31}-1$ bits



Support three patterns

- PRGM (programmable) pattern
Pattern editing with the internal pattern editor
Internal pattern memory of 8 Mbits for each ED
- PRBS (pseudorandom) pattern
Support pseudorandom pattern from 2^7-1 to $2^{15}-1$ bits
- Zero-Subst pattern
Support Zero-Subdt pattern from 2^7-1 to $2^{15}-1$ bits
Input Zero pattern length can be set within max.32,767 bits.

Support STS-768 / STM-256

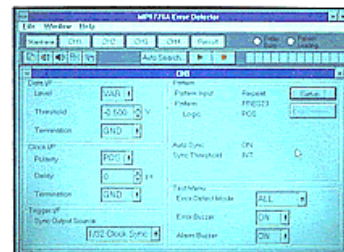


- Support corresponding six frames of STS768/ STM-256 with 32 Mbits pattern memory.

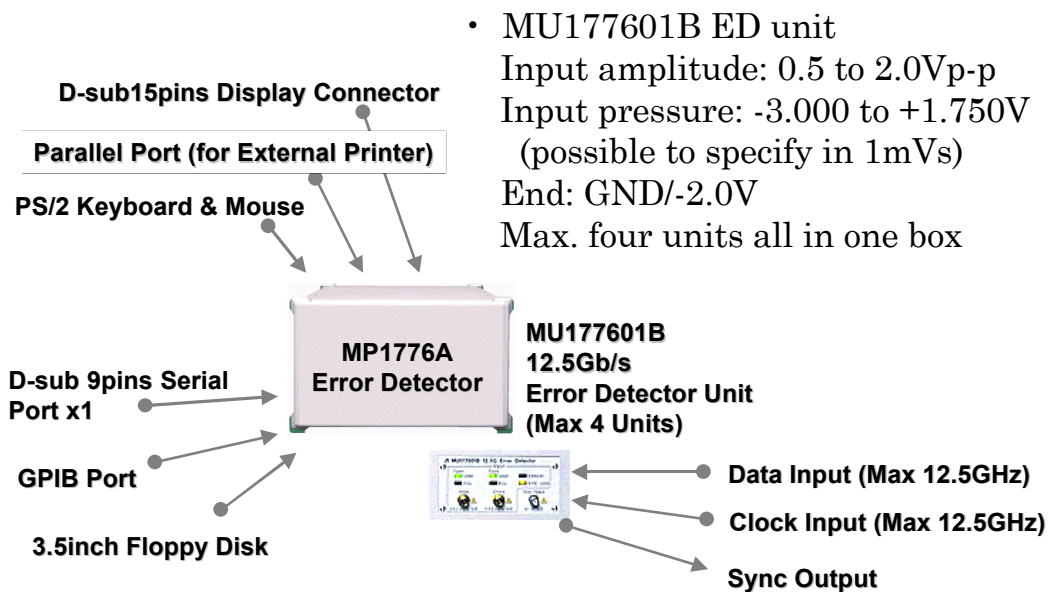
User Interface



- Direct operation with the 10.4 inch TFT and the touch screen.
- Operation based on Graphical User Interface.
- Connection with a keyboard, a mouse and an external display



Input/Output Interface



Anritsu

Specifications are subject to change without notice.

ANRITSU CORPORATION MEASUREMENT SOLUTIONS

5-10-27, Minamiazabu, Minato-ku, Tokyo 106-8570, Japan
Phone: +81-3-3446-1111
Telex: J34372
Fax: +81-3-3442-0235

Overseas Subsidiaries

● U.S.A.

ANRITSU COMPANY

North American Region Headquarters

1155 East Collins Blvd., Richardson, Tx 75081, U.S.A.
Toll Free: 1-800-ANRITSU (267-4878)
Phone: +1-972-644-1777
Fax: +1-972-671-1877

● Canada

ANRITSU ELECTRONICS LTD.

Unit 102, 215 Stafford Road West
Nepean, Ontario K2H 9C1, Canada
Phone: +1-613-828-4090
Fax: +1-613-828-5400

● Brasil

ANRITSU ELETRÔNICA LTDA.

Praia de Botafogo 440, Sala 2401 CEP 22250-040,
Rio de Janeiro, RJ, Brasil
Phone: +55-21-5276922
Fax: +55-21-537-1456

● U.K.

ANRITSU LTD.

200 Capability Green, Luton, Bedfordshire LU1 3LU, U.K.
Phone: +44-1582-433200
Fax: +44-1582-731303

● Germany

ANRITSU GmbH

Grafenberger Allee 54-56, 40237 Düsseldorf, Germany
Phone: +49-211-96855-0
Fax: +49-211-96855-55

● France

ANRITSU S.A.

9, Avenue du Québec Z.A. de Courtabœuf 91951 Les
Ulis Cedex, France
Phone: +33-1-60-92-15-50
Fax: +33-1-64-46-10-65

● Italy

ANRITSU S.p.A.

Via Elio Vittorini, 129, 00144 Roma EUR, Italy
Phone: +39-06-509-9711
Fax: +39-06-502-24-25

● Sweden

ANRITSU AB

Botvid Center, Fittja Backe 1-3 145 84 Stockholm,
Sweden
Phone: +46-853470700
Fax: +46-853470730

● Singapore

ANRITSU PTE LTD.

6, New Industrial Rd., #06-01/02, Hoe Huat Industrial
Building, Singapore 536199
Phone: +65-282-2400
Fax: +65-282-2533

● Hong Kong

ANRITSU COMPANY LTD.

Suite 719, 7/F., Chinachem Golden Plaza, 77 Mody
Road, Tsimshatsui East, Kowloon, Hong Kong, China
Phone: +852-2301-4980
Fax: +852-2301-3545

● Korea

ANRITSU CORPORATION

14F Hyun Juk Bldg. 832-41, Yeoksam-dong,
Kangnam-ku, Seoul, Korea
Phone: +82-2-553-6603
Fax: +82-2-553-6604-5

● Australia

ANRITSU PTY LTD.

Unit 3/170 Forster Road Mt. Waverley, Victoria, 3149,
Australia
Phone: +61-3-9558-8177
Fax: +61-3-9558-8255

● Taiwan

ANRITSU COMPANY INC.

6F, 96, Sec. 3, Chien Kou North Rd. Taipei, Taiwan
Phone: +886-2-2515-6050
Fax: +886-2-2509-5519

● Spain

ANRITSU ELECTRÓNICA, S.A.

Europa Empresarial Edificio Londres, Planta 1, Oficina
6 C/ Playa de Liencres, 2 28230 Las Rozas. Madrid,
Spain
Phone: +34-91-6404460
Fax: +34-91-6404461