

TECHNICAL NOTE

MD8470A

Signalling Tester

Supplementary Service Test

ANRITSU CORPORATION

Copyright © 2005 by ANRITSU CORPORATION

The contents of this manual shall not be disclosed in any way or reproduced in any media without the express written permission of Anritsu Corporation.

Explanation of the Sample Supplementary Service Scenario

Discover What's Possible™
MD8470A-E-E-3

Slide 1

Anritsu

Contents

Part 1: General

Part 2: How to compile and execute

Part 3: Additional tool (Scenario Scheduler)

Part 4: Scenario modification

Discover What's Possible™
MD8470A-E-E-3

Slide 2

Anritsu

Part 1: General

General

1. Please download the Supplementary Service Scenario (W-CDMA/GSM/GPRS) from the following URL:
<https://www1.anritsu.co.jp/Download/MService/Login.asp>

General

2. After extracting the downloaded file, you can see :
- 3 Readme xls files (Sequence, Readme, Source)
 - table of 'Test case vs file name'
 - Sequence folder
 - protocol sequence arrow diagram for each test case
 - Readme folder
 - usage for each test case
 - Source folder
 - source code and header file for each test case

Part 2: How to compile and execute

How to compile and execute

Compiling the scenario

1. Please copy the 'Source' folder (including files in this folder) to 'c:\MX847010\Scenario'.
2. Please move all header files in the 'c:\MX847010\Scenario\Source' folder to 'c:\MX847010\Scenario\UserInclude' folder.
3. Please drag the source file (.c file) and drop onto 'Scenario' shortcut located in 'Desktop', then you can see the executable scenario (.dll file) in the 'c:\MX847010\Scenario' folder.
(Microsoft Visual C++ .NET 2003 is required for compiling)

How to compile and execute

Executing the scenario

1. Please refer to the readme file in the 'Readme' folder.
2. Please execute the MX847010 software
3. Please load the parameter file (G01.pmx or W01.pmx) and load the scenario (.dll file). Then start to execute the scenario.

Part 3: Additional Tool (Scenario Scheduler)

Additional tool (Scenario Scheduler)

Why Scenario Scheduler?

1. The following is an example of the Readme file
(0021_ReadMe_Eng.txt)

Initial state: No Service

1. Use 1001.dll and execute Combined Attach.

(Correspond to mobile with SS transmission after Attach)Use 1001m.dll and execute Combined Attach.

State: Idle

2. Execute 0021.dll without canceling on the DLL selection window after the procedure 1. ends.

3. Input CLI number in the dialog box.

4. Since mobile Terminated, push a mobile telephone call button.

State: Conversation

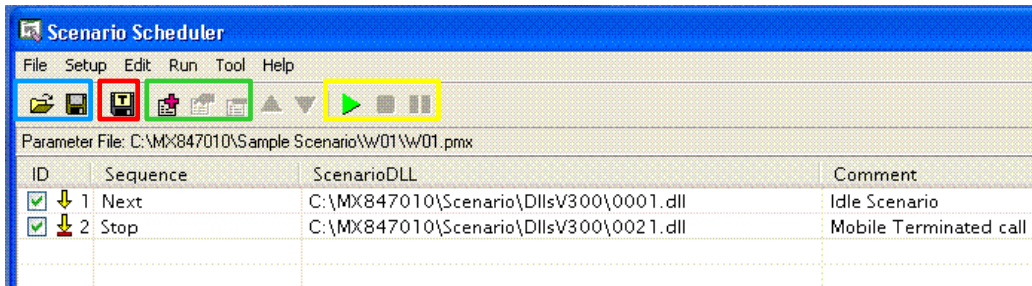
5. Click "Yes" button on the dialog box(Disconnect) and end call from the network.

We need to execute several scenarios in sequence (not so convenient) so we recommend using the 'Scenario Scheduler'.

Additional tool (Scenario Scheduler)

How to Execute

2. Please execute the scenario scheduler 'Start Program' -> 'Anritsu' -> 'Scenario Scheduler'. Then you can see the following:



- Saving the MX847010 trace log file (.lgx or .pcap or .txt)
- Adding/Modifying/Deleting the sequence
- Start/Stop/Pause the scenario execution
- Saving/Roading the parameter of the Scenario Scheduler software

Discover What's Possible™
MD8470A-E-E-3

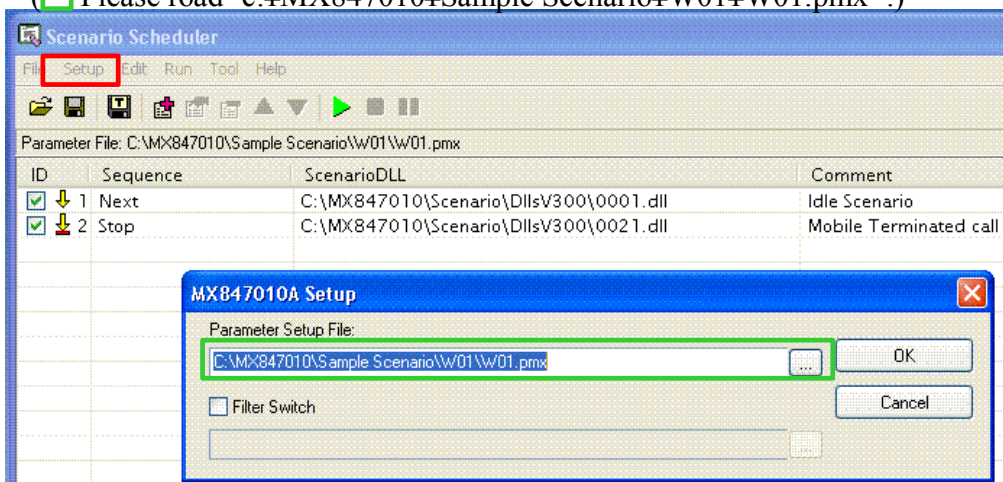
Slide 11

Anritsu

Additional tool (Scenario Scheduler)

Parameter Setup

2. Please execute the MX847010A setup ('Setup' -> 'MX847010A setup'), you can see the 'MX847010A Setup' screen, then please road the parameter file. (Please road 'c:\MX847010\Sample Scenario\W01\W01.pmx' .)



Discover What's Possible™
MD8470A-E-E-3

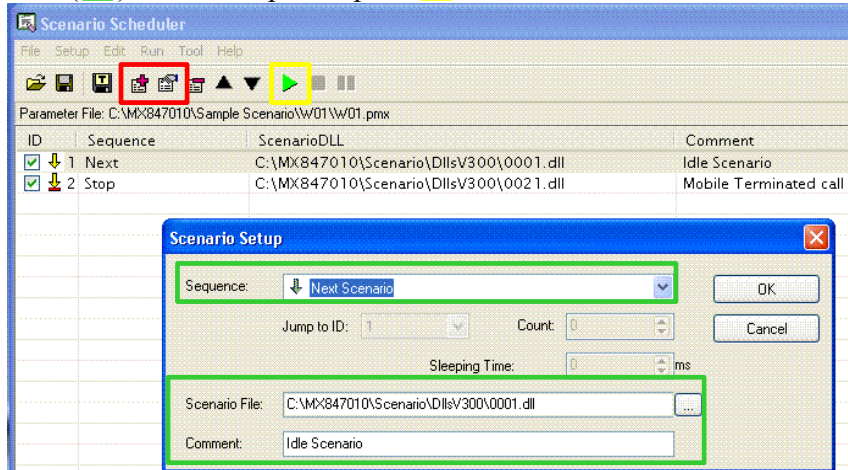
Slide 12

Anritsu

Additional tool (Scenario Scheduler)

Scenario Scheduling

3. Please push 'Add' or 'Modify' button, you can see the 'Scenario Setup' screen. Then we can define the 'Sequence', selecting scenario and adding some comments(). And then please push 'Start' button.



Part 4: Scenario modification

Scenario Modification

General

1. We would like to recommend scenario modification only for the supplementary service (SS) part. In this case, modifying only the sending/receiving message (NAS layer) is enough, so this is easier. (In addition to the sending/receiving message, setting MD8470A changes are required in some RRC layer message cases)

2. The 'Message Coder' tool is very useful for modifying messages.

(Please refer to the Technical Note 'Scenario Test'.)

Scenario Modification

Structure of source code

1. There are 2 files: one is .c source; the other is .h header file. (examples: 0001.c and 0001.h)

2. The .c file is the main body of this scenario and includes the header file.

3. Only Layer3 message HEX data (MD8470A to UE) and message length (bit unit: only the message with integrity) are described in the .h file.

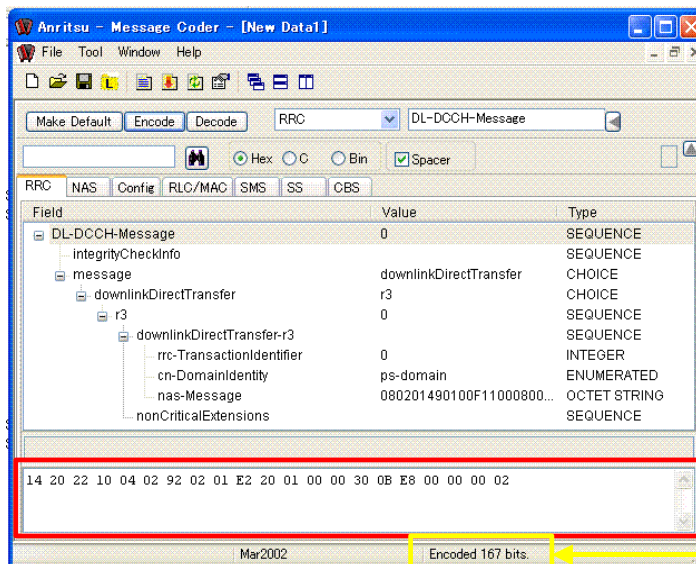
Scenario Modification

How to modify (file name)

1. Please select a similar test case from the sample scenarios.
2. Please rename both .c and .h files.
3. In the .c and .h files we can see the file names, so please change these names.

Scenario Modification

How to modify (.h file)



4. Please modify, add and delete layer3 message HEX data and length in the .h file. (Message Encode tool is very useful)

Scenario Modification

How to modify (.C file)

5. Please modify, add and delete in the 'SetPDU' function in the .c file based on the changes in the .h file.
6. Please modify, add and delete in the protocol sequence part in the .c file based on the changes in the .h file.

Anritsu

Specifications are subject to change without notice.

ANRITSU CORPORATION

1800 Onna, Atsugi-shi, Kanagawa, 243-8555 Japan
Phone: +81-46-223-1111
Fax: +81-46-296-1264

● U.S.A.

ANRITSU COMPANY TX OFFICE SALES AND SERVICE

1155 East Collins Blvd., Richardson, TX 75081, U.S.A.
Toll Free: 1-800-ANRITSU (267-4878)
Phone: +1-972-644-1777
Fax: +1-972-644-3416

● Canada

ANRITSU ELECTRONICS LTD.
700 Silver Seven Road, Suite 120, Kanata,
ON K2V 1C3, Canada
Phone: +1-613-591-2003
Fax: +1-613-591-1006

● Brasil

ANRITSU ELETRÔNICA LTDA.
Praça Amadeu Amaral, 27 - 1 andar
01327-010 - Paraiso, Sao Paulo, Brazil
Phone: +55-11-3283-2511
Fax: +55-11-3886940

● U.K.

ANRITSU LTD.

200 Capability Green, Luton, Bedfordshire LU1 3LU, U.K.
Phone: +44-1582-433280
Fax: +44-1582-731303

● Germany

ANRITSU GmbH

Grafenberger Allee 54-56, 40237 Düsseldorf, Germany
Phone: +49-211-96855-0
Fax: +49-211-96855-55

● France

ANRITSU S.A.

9, Avenue du Québec Z.A. de Courtabœuf 91951 Les
Ulis Cedex, France
Phone: +33-1-60-92-15-50
Fax: +33-1-64-46-10-65

● Italy

ANRITSU S.p.A.

Via Elio Vittorini, 129, 00144 Roma EUR, Italy
Phone: +39-06-509-9711
Fax: +39-06-502-2425

● Sweden

ANRITSU AB

Borgarfjordsgatan 13 164 40 Kista, Sweden
Phone: +46-853470700
Fax: +46-853470730

● Finland

ANRITSU AB

Teknobulevardi 3-5, FI-01530 Vantaa, Finland
Phone: +358-9-4355-220
Fax: +358-9-4355-2250

● Denmark

Anritsu AB Danmark

Korskildelund 6 DK - 2670 Greve, Denmark
Phone: +45-36915035
Fax: +45-43909371

● Singapore

ANRITSU PTE LTD.

10, Hoe Chiang Road #07-01/02, Keppel Towers,
Singapore 089315
Phone: +65-6282-2400
Fax: +65-6282-2533

● Hong Kong

ANRITSU COMPANY LTD.

Suite 923, 9/F., Chinachem Golden Plaza, 77 Mody
Road, Tsimshatsui East, Kowloon, Hong Kong, China
Phone: +852-2301-4980
Fax: +852-2301-3545

● P. R. China

ANRITSU COMPANY LTD.

Beijing Representative Office

Room 1515, Beijing Fortune Building, No. 5 North
Road, the East 3rd Ring Road, Chao-Yang District
Beijing 100004, P.R. China
Phone: +86-10-6590-9230

● Korea

ANRITSU CORPORATION

8F Hyun Juk Bldg. 832-41, Yeoksam-dong,
Kangnam-ku, Seoul, 135-080, Korea
Phone: +82-2-553-6603
Fax: +82-2-553-6604

● Australia

ANRITSU PTY LTD.

Unit 3/170 Forster Road Mt. Waverley, Victoria, 3149,
Australia
Phone: +61-3-9558-8177
Fax: +61-3-9558-8255

● Taiwan

ANRITSU COMPANY INC.

7F, No. 316, Sec. 1, NeiHu Rd., Taipei, Taiwan
Phone: +886-2-8751-1816
Fax: +886-2-8751-1817

050203